



United States Department of Agriculture

# Boughs, Bay and Beargrass...

...aka **SPECIAL FOREST PRODUCTS** on the Six Rivers National Forest

Mad River Ranger District – North

## What are Special Forest Products?

*Special Forest Products* (SFP) are non-timber, renewable plant materials collected for personal or commercial use (e.g., Christmas trees, edible mushrooms, and floral greenery). An important principle of SFP harvest is the maintenance of plant diversity in harvest areas.

## Where can I harvest Special Forest Products?

Harvesting of SFPs is only allowed on National Forest System (NFS) lands within the Six Rivers National Forest. Harvesting is not allowed in administrative sites, wilderness areas, research natural areas, or special interest areas including botanical areas. In addition to these special management restrictions, no harvest is allowed in operating contract areas such as forest product sales, pre-commercial thinning areas, etc. NO harvest is allowed within 200 feet of any building, campground, state highway, river, stream, pond, lake, or other water body.

## Special Management Areas Closed to Harvest

Harvesting of SFPs is not allowed in wilderness, botanical/geologic areas or research natural areas. Please help us protect these special areas. Wilderness areas are managed to preserve and protect their natural conditions and to provide opportunities for solitude or primitive recreation pursuant to the Wilderness Act of 1964. Botanical/geologic areas are set aside to protect the unique ecological values for which they were established. Research natural areas are native ecological communities that are permanently protected and maintained in the natural condition for the purposes of conserving biological diversity, conducting non-manipulative research and monitoring, and fostering education.

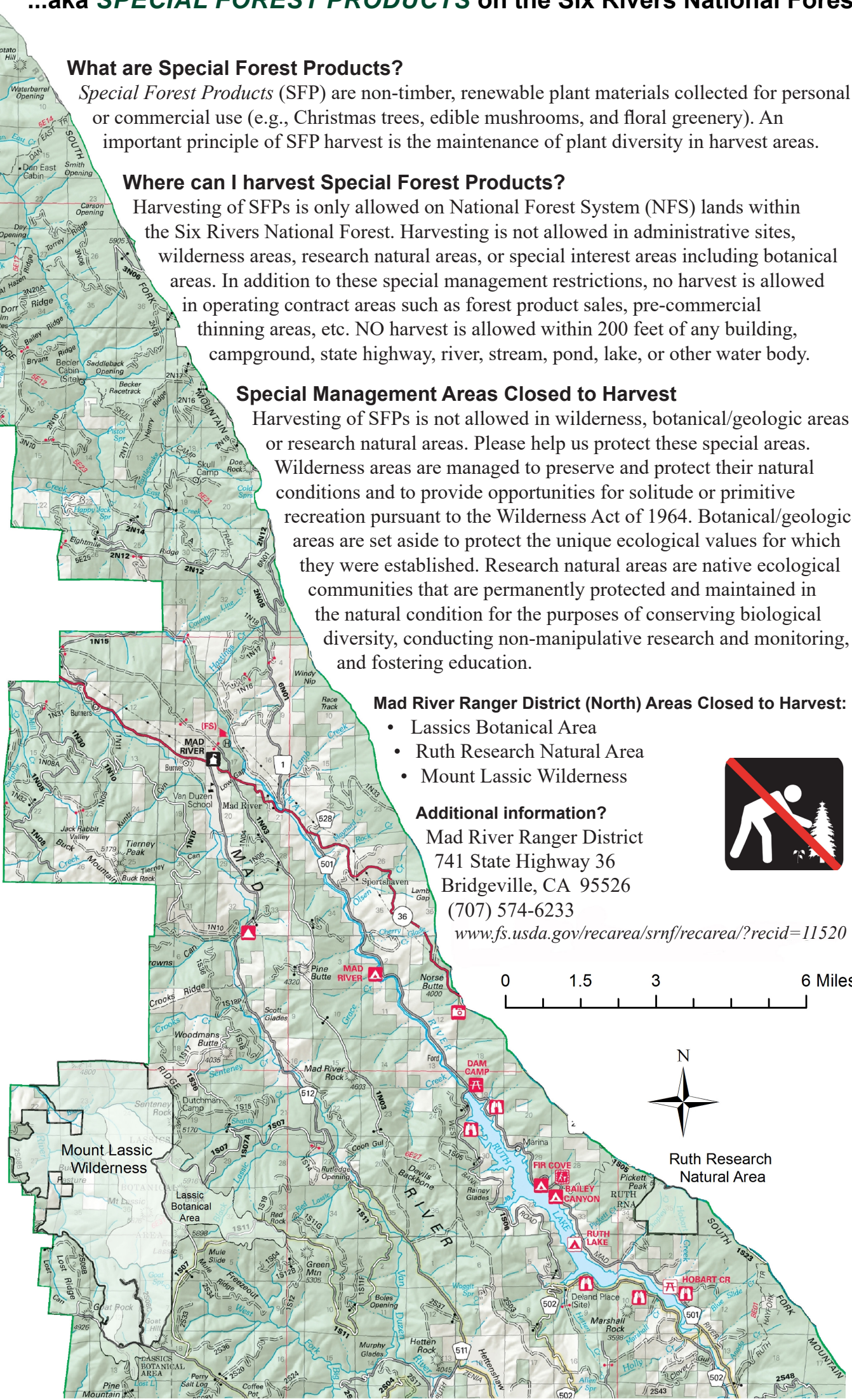
## Mad River Ranger District (North) Areas Closed to Harvest:

- Lassics Botanical Area
- Ruth Research Natural Area
- Mount Lassic Wilderness

## Additional information?

Mad River Ranger District  
741 State Highway 36  
Bridgeville, CA 95526  
(707) 574-6233

[www.fs.usda.gov/recarea/srnf/recarea/?recid=11520](http://www.fs.usda.gov/recarea/srnf/recarea/?recid=11520)



Forest Service

Pacific Southwest Region

Six Rivers National Forest

December 2018



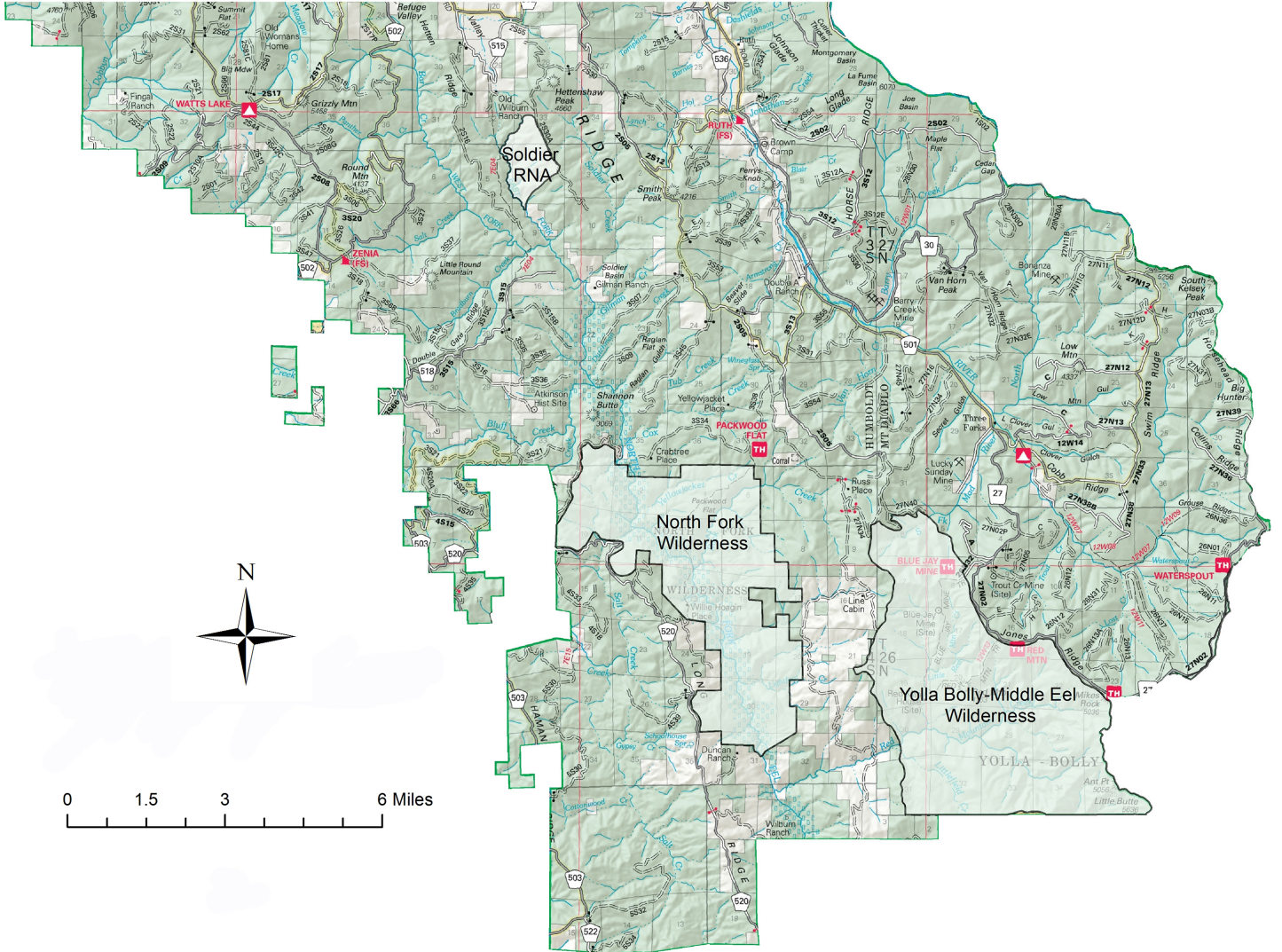


United States Department of Agriculture

# Boughs, Bay and Beargrass...

...aka **SPECIAL FOREST PRODUCTS** on the Six Rivers National Forest

## Mad River Ranger District – South



### Mad River Ranger District (South) Areas

#### CLOSED to Harvest:

- Soldier Research Natural Area
- North Fork Wilderness
- Yolla Bolly-Middle Eel Wilderness



#### Additional information?

Mad River Ranger District  
 741 State Highway 36  
 Bridgeville, CA 95526  
 (707) 574-6233



Oregon grape (*Berberis aquifolium*), which is not uncommon in the Pacific Northwest or the Six Rivers National Forest, is a **Special Forest Product**. Its large berries are used to make jelly and a purple dye. The inner bark yields a yellow dye. The foliage is used by florists for greenery and a small gathering industry has been established in the Pacific Northwest.

