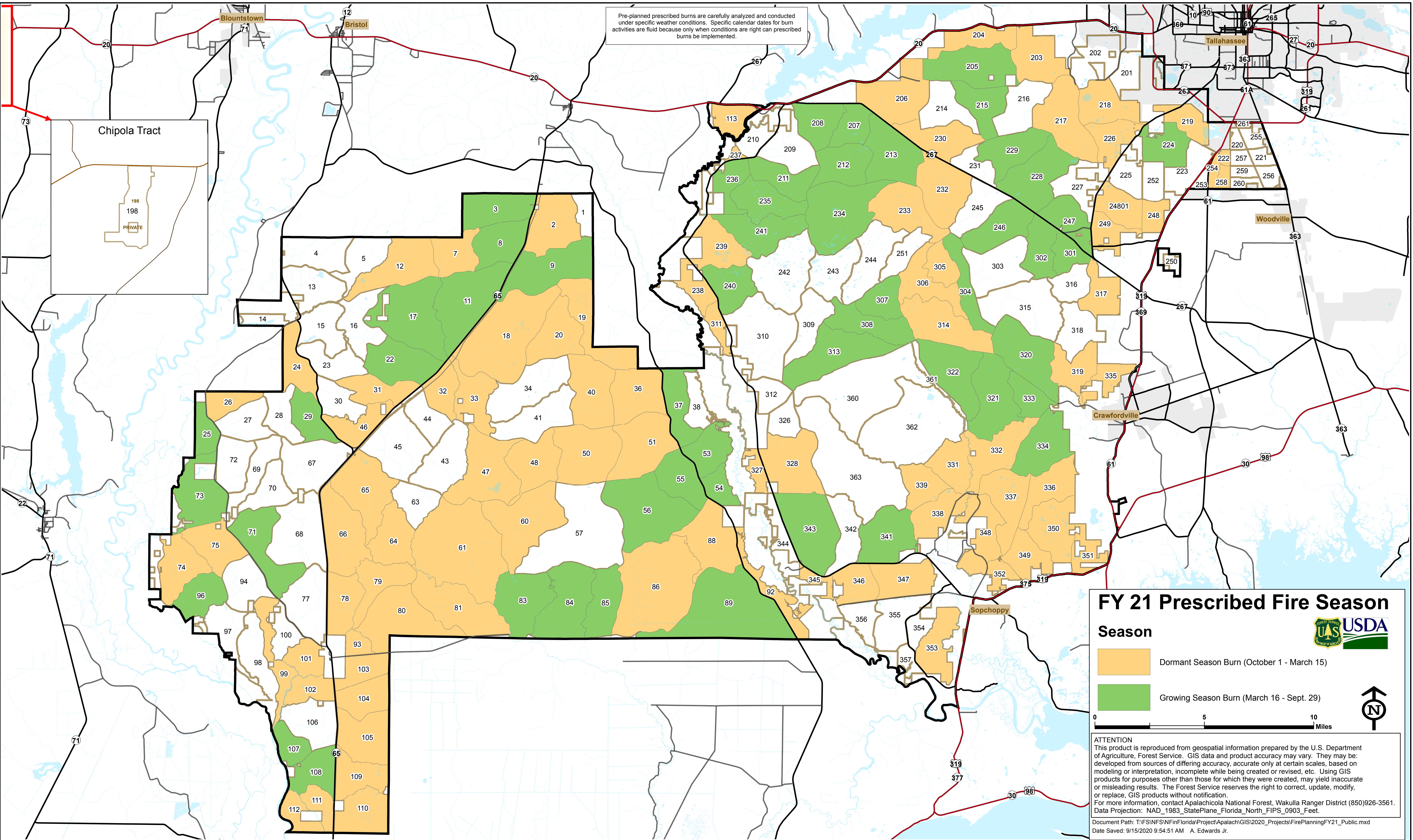



Apalachicola National Forest FY 2021 Prescribed Burn Planning Map

Pre-planned prescribed burns are carefully analyzed and conducted under specific weather conditions. Specific calendar dates for burn activities are fluid because only when conditions are right can prescribed burns be implemented.



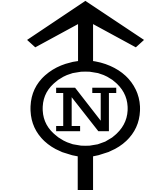
FY 21 Prescribed Fire Season

Season



- Dormant Season Burn (October 1 - March 15)
- Growing Season Burn (March 16 - Sept. 29)

0 5 10 Miles



ATTENTION
 This product is reproduced from geospatial information prepared by the U.S. Department of Agriculture, Forest Service. GIS data and product accuracy may vary. They may be developed from sources of differing accuracy, accurate only at certain scales, based on modeling or interpretation, incomplete while being created or revised, etc. Using GIS products for purposes other than those for which they were created, may yield inaccurate or misleading results. The Forest Service reserves the right to correct, update, modify, or replace, GIS products without notification.
 For more information, contact Apalachicola National Forest, Wakulla Ranger District (850)926-3561.
 Data Projection: NAD_1983_StatePlane_Florida_North_FIPS_0903_Feet.
 Document Path: T:\FS\NFS\Fin\Florida\Project\Apalach\GIS\2020_Projects\FirePlanning\FY21_Public.mxd
 Date Saved: 9/15/2020 9:54:51 AM A. Edwards Jr.