

Sulphur Ranger District
9 Ten Mile Drive
Granby CO 80446
(970) 887-4100
FAX: (970) 887-4111



United States Department of Agriculture

HIKING

BLUE RIDGE TRAIL # 20

Difficulty: More difficult
Trail Use: Medium
Length: 3.5 miles. DISTANCES ARE ONE-WAY
Elevation: 8,700 feet to 11,200 feet
Use: Hiking

Access:

- From Granby take Highway 40 west to Highway 34. Go north on Highway 34 to CR 4. Turn left onto CR 4, travel approximately 3 miles to the intersection of NFSR 120 and 123. Go to the right on FSR 120 and travel approximately 9 miles to the North Supply Trailhead. Hike up M124 ATV trail for ½ mile to first right turn onto Blue Ridge Trail.

Trail Highlights:

- This trail starts as an old logging road bed. Immediately leaving the Blue Ridge Mountain Bike Trail, it climbs in elevation quite quickly. It leaves the old road bed and hugs the mountainside, as a narrow step foot trail. The trail eventually connects to the Wolverine Trail.
- The Blue Ridge Trail takes a sharp turn to the right at this intersection, heading north on a much gentler grade, all the way to the upper end of the Blue Ridge Mountain Bike Trail.
- After this intersection, the trail leaves the trees and continues in elevation, winding up across the alpine into the Never Summer Wilderness Area.
- Passing along the South West face of Blue Ridge, the trail eventually crosses over and drops quickly to the intersection with the Cascade Mountain Trail and the terminus of this trail.

Important Information:

- Wilderness regulations apply in the Never Summer Wilderness Area
- **Motorized equipment**, or mechanized transportation is prohibited
- **Group size** is limited to a combination of 15 people and livestock with the maximum number of 10 people in any group.
- **Camping and campfires** are prohibited within 100' feet of all lakes, streams and trails
- **Pets** must be under control at all times.

Len



For More Information:

Sulphur Ranger District
9 Ten Mile Drive; PO Box 10
Granby, CO 80446-0010
(970) 887-4100

USDA is an equal opportunity provider and employer.



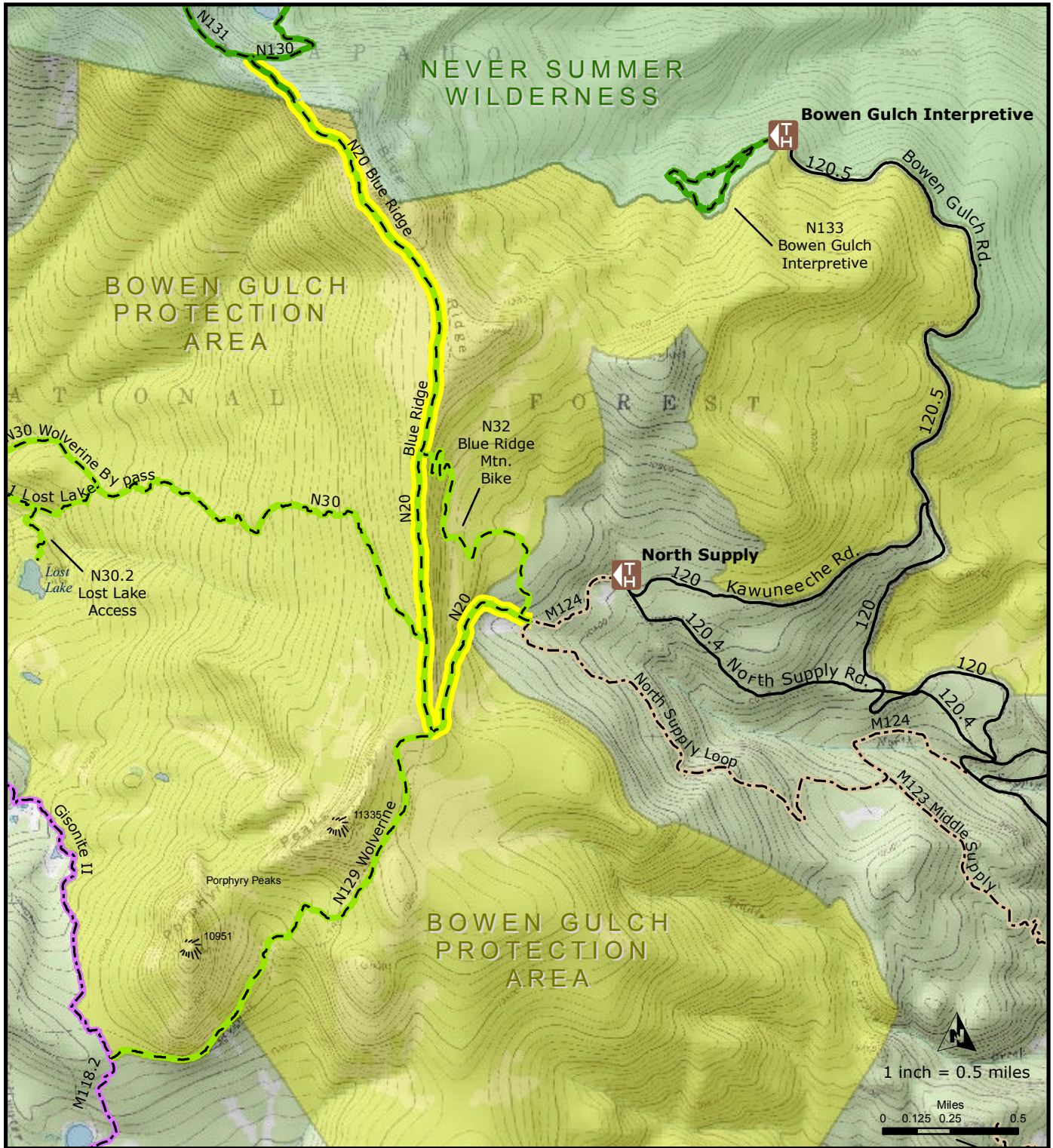
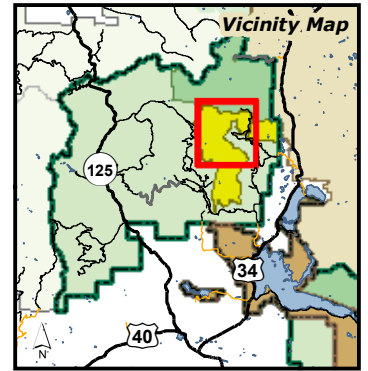
Arapaho National Forest
Sulphur Ranger District

INDIVIDUAL TRAIL MAP

August 2015

Route ID: N20
Name: Blue Ridge
GIS Miles: 3.5

- | | | | |
|--|-------------|--|------------------------------------|
| | Trailhead | | Motorized Trail - Motorbike/ATV |
| | Restroom | | Motorized Trail - Motorbike |
| | Gate | | Non-Motorized Trail |
| | Forest Road | | Non-Motorized/Non-Mechanized Trail |
| | Other Road | | Continental Divide Trail |
| | | | Non-Motorized Road |
| | | | SRD Boundary |



This product is reproduced from geospatial data prepared by the USDA Forest Service. Geospatial data and product accuracy may vary. Using geospatial products for purposes other than those for which they were created may yield inaccurate or misleading results. The Forest Service reserves the right to correct, update, modify, or replace geospatial products without notification. For more information contact the Arapaho/Roosevelt National Forest Supervisors Office at 970-295-6600.