

Sulphur Ranger District
9 Ten Mile Drive
Granby CO 80446
(970) 887-4100
FAX: (970) 887-4111



United States Department of Agriculture



HIKING

ROARING FORK TRAIL # 3

Difficulty: Difficult

Trail Use: Moderate

Length: 6.3 miles. DISTANCES ARE ONE-WAY.

Elevation: 8,300 feet at the Roaring Fork TH; 10,643 feet at Stone Lake.

Access:

- Take Highway 34 to County Road 6, 5.4 miles north of Granby and 8.9 miles south of Grand Lake. County Road 6 (NFSR 125) is a 9.4 miles improved road along Granby Reservoir. Travel down County Road 6 to the Arapaho Bay Campground. Turn left into the campground, follow the road towards the Roaring Fork Loop of the campground. The TH will be on the right, just before the Roaring Fork Loop.

Trail Highlights:

- The hardest section of the trail is the first mile. The Roaring Fork Creek loudly cascades over a series of small waterfalls and around large boulders along the trail's edge.
- Continue for 1.5 miles until another double log footbridge is crossed. Shortly after this crossing there is a fork in the trail. The left fork travels north to Lake Watanga and the right continues on to Stone Lake.
- The views of the surrounding Indian Peaks, the Vasquez Ridge and the Gore Range is Spectacular.
- Many species of wildlife can be seen along the trail, and fish are abundant in both Roaring Fork and Stone Lake.

Important Information:

- Parking in the Arapaho National Recreation Area (ANRA) at Arapaho Bay Campground requires a daily use fee.
- Permits are required for overnight stays in the Indian Peaks Wilderness (IPW) from June 1 to September 15.
- Additional permit requirements exist for large and organized groups.
- Group size is limited to 12 people and/or livestock.
- Dogs must be on a leash at all times.
- Follow the Leave No Trace principles.



USDA is an equal opportunity provider and employer.



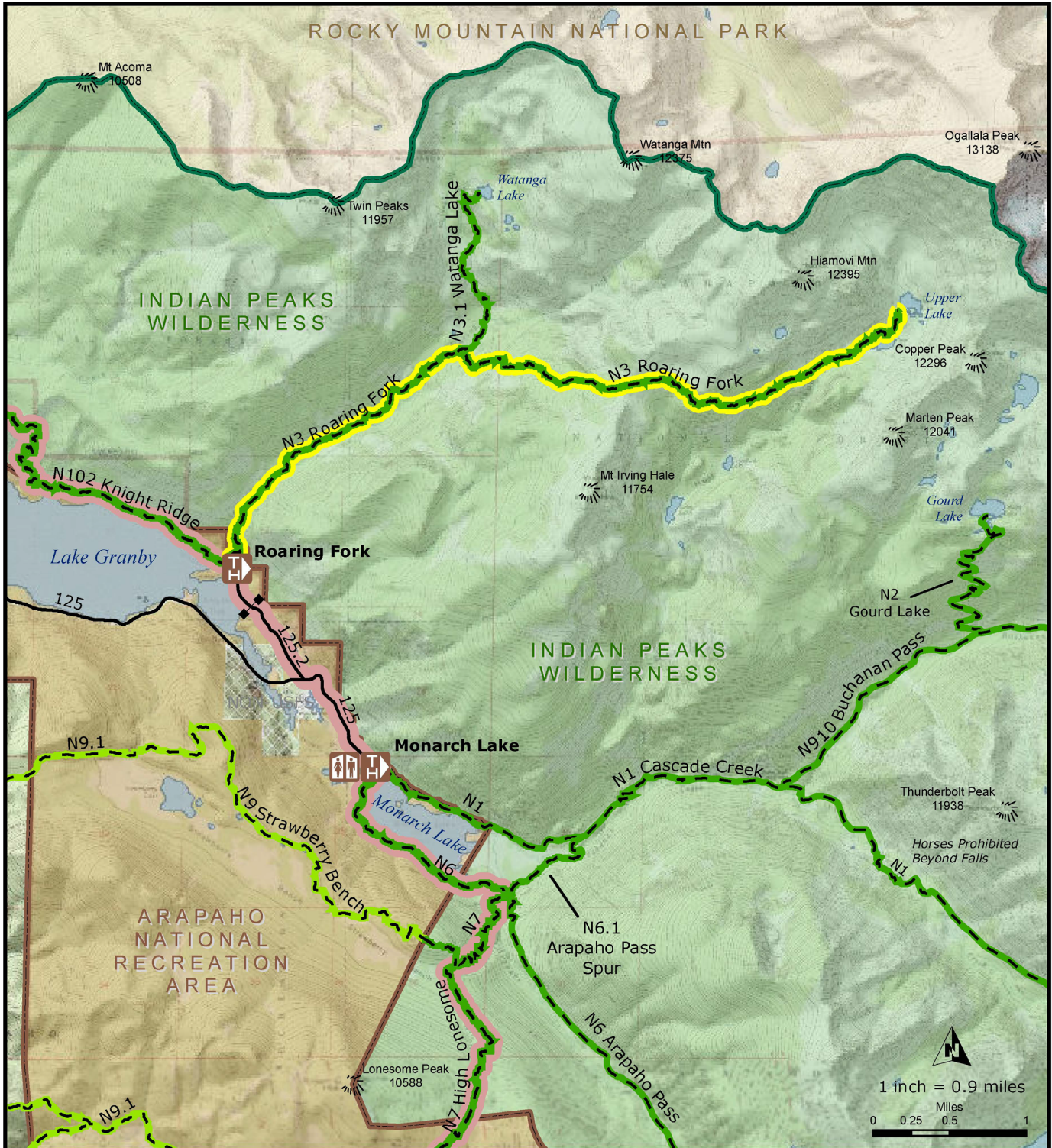
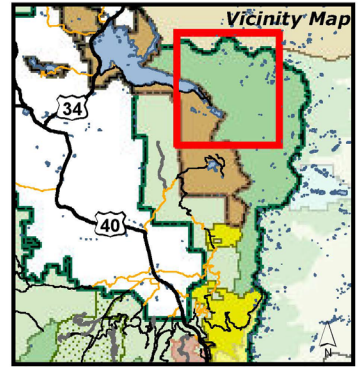
Arapaho National Forest
Sulphur Ranger District

INDIVIDUAL TRAIL MAP

April 2012

Route ID: N3
Name: Roaring Fork
GIS Miles: 6.3

- | | | | |
|--|-------------|--|------------------------------------|
| | Trailhead | | Motorized Trail - Motorbike/ATV |
| | Restroom | | Motorized Trail - Motorbike |
| | Gate | | Non-Motorized Trail |
| | Forest Road | | Non-Motorized/Non-Mechanized Trail |
| | Other Road | | Continental Divide Trail |
| | | | SRD Boundary |



This product is reproduced from geospatial data prepared by the USDA Forest Service. Geospatial data and product accuracy may vary. Using geospatial products for purposes other than those for which they were created may yield inaccurate or misleading results. The Forest Service reserves the right to correct, update, modify, or replace geospatial products without notification. For more information contact the Arapaho/Roosevelt National Forest Supervisors Office at 970-295-6600.