



United States Department of Agriculture

Appendix A

Maps for the Manti-La Sal National Forest Draft Forest Plan



Forest Service

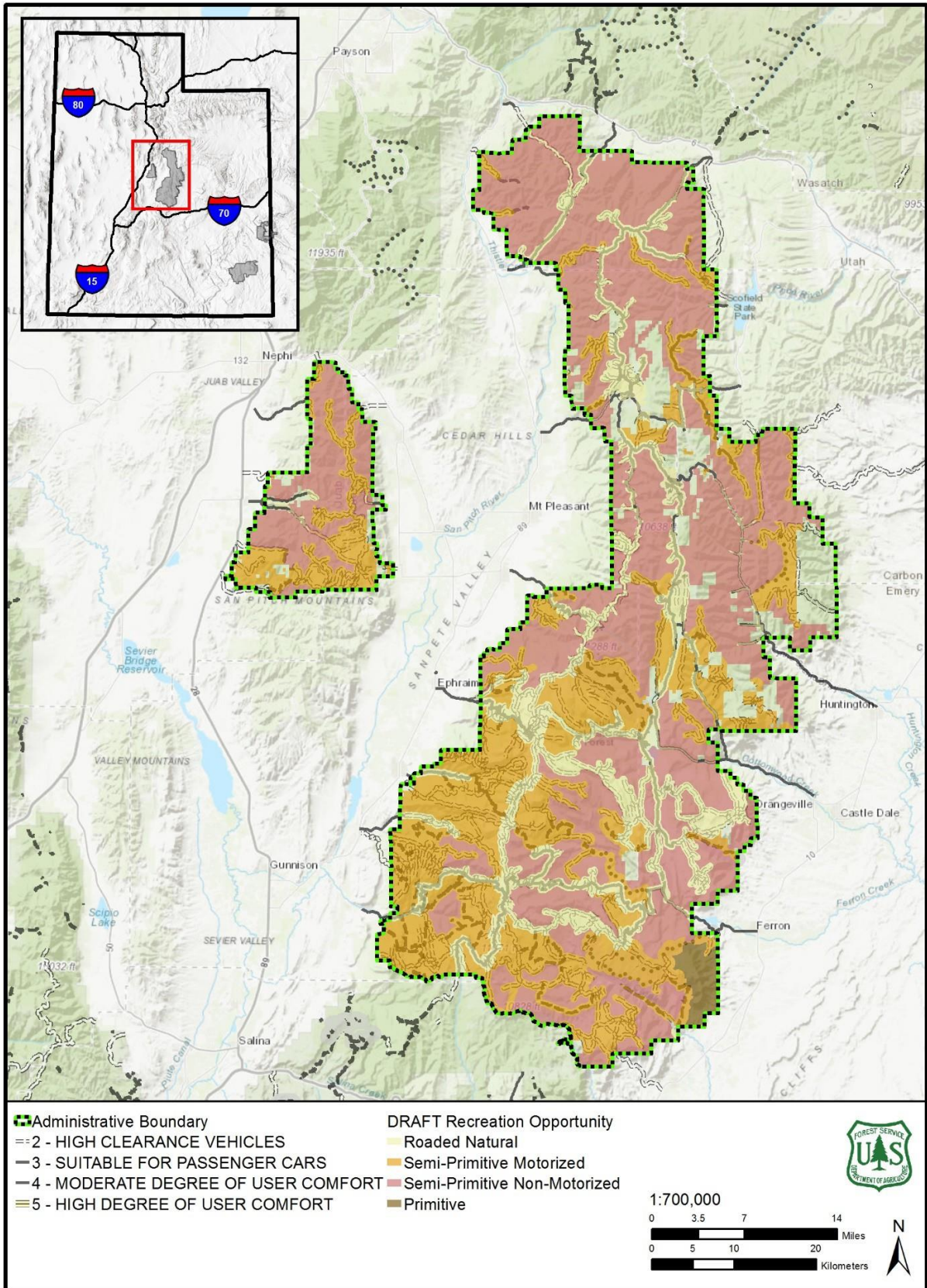
Intermountain Region

September 2020

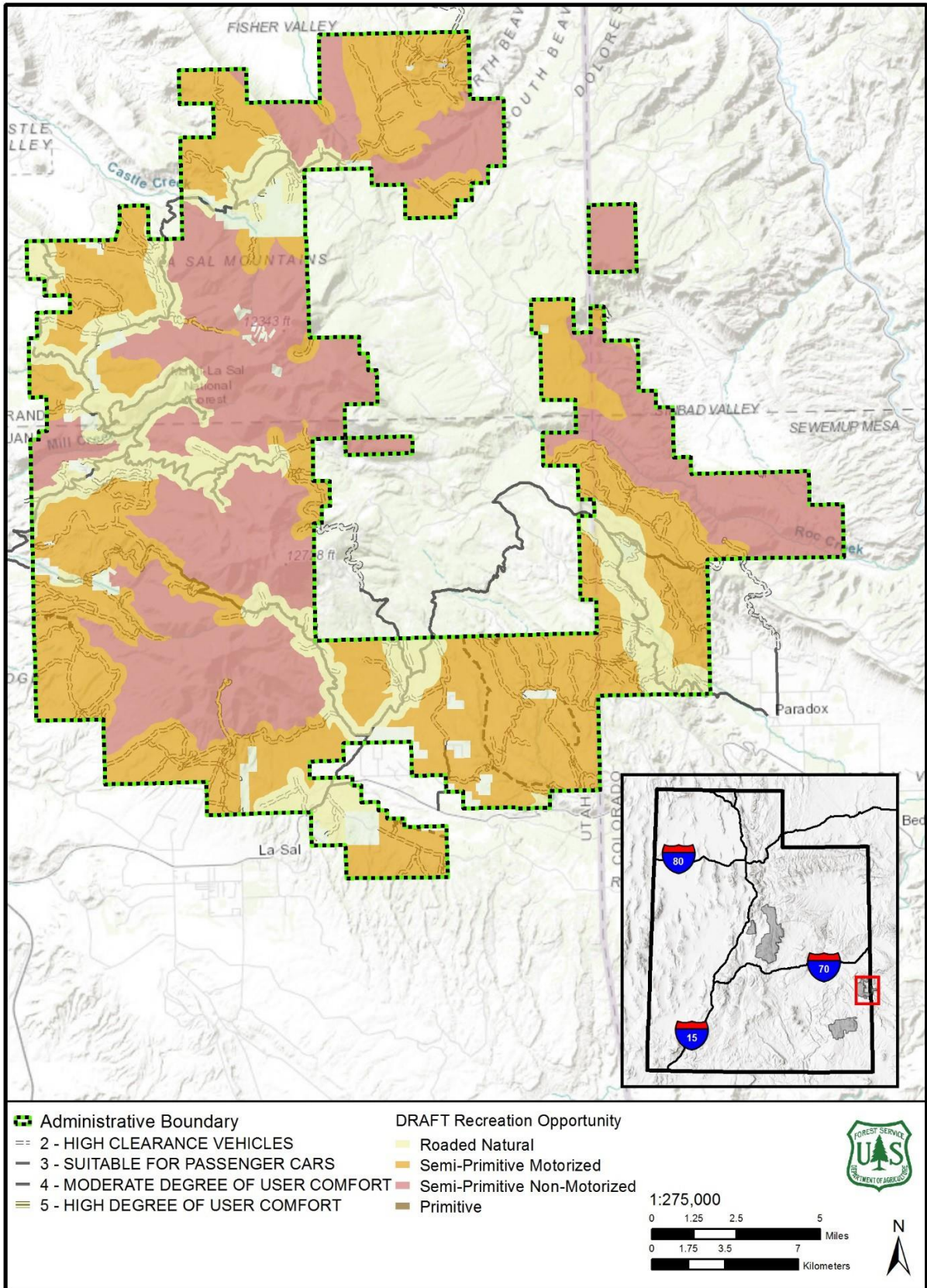
Table of Contents

Recreational Opportunities Spectrum, North Zone.....	3
Recreational Opportunities Spectrum, South Zone, Moab	4
Recreational Opportunities Spectrum, South Zone, Monticello	5
Scenery Management Spectrum, North Zone	6
Scenery Management Spectrum, South Zone, Moab.....	7
Scenery Management Spectrum, South Zone, Monticello	8
Fire and Fuels, High ERC, North Zone	9
Fire and Fuels, High ERC, South Zone, Moab	10
Fire and Fuels, High ERC, South Zone, Monticello.....	11
Livestock Grazing and Range, North Zone	12
Livestock Grazing and Range, South Zone, Moab	13
Livestock Grazing and Range, South Zone, Monticello	14
Timber Management, Not Suitable, North Zone.....	15
Timber Management, Not Suitable, South Zone, Moab	16
Timber Management, Not Suitable, South Zone, Monticello	17
Existing Wilderness, North Zone	18
Existing Wilderness, South Zone, Monticello.....	19
Bear’s Ears National Monument, South Zone, Monticello.....	20
Proposed Wilderness for Further Analysis, North Zone.....	21
Proposed Wilderness for Further Analysis, South Zone, Moab.....	22
Proposed Wilderness for Further Analysis, South Zone, Monticello	23
Management and Geographic Areas, South Zone, Monticello	24
Management and Geographic Areas, North Zone.....	25
Geographic Areas, South Zone, Moab.....	26

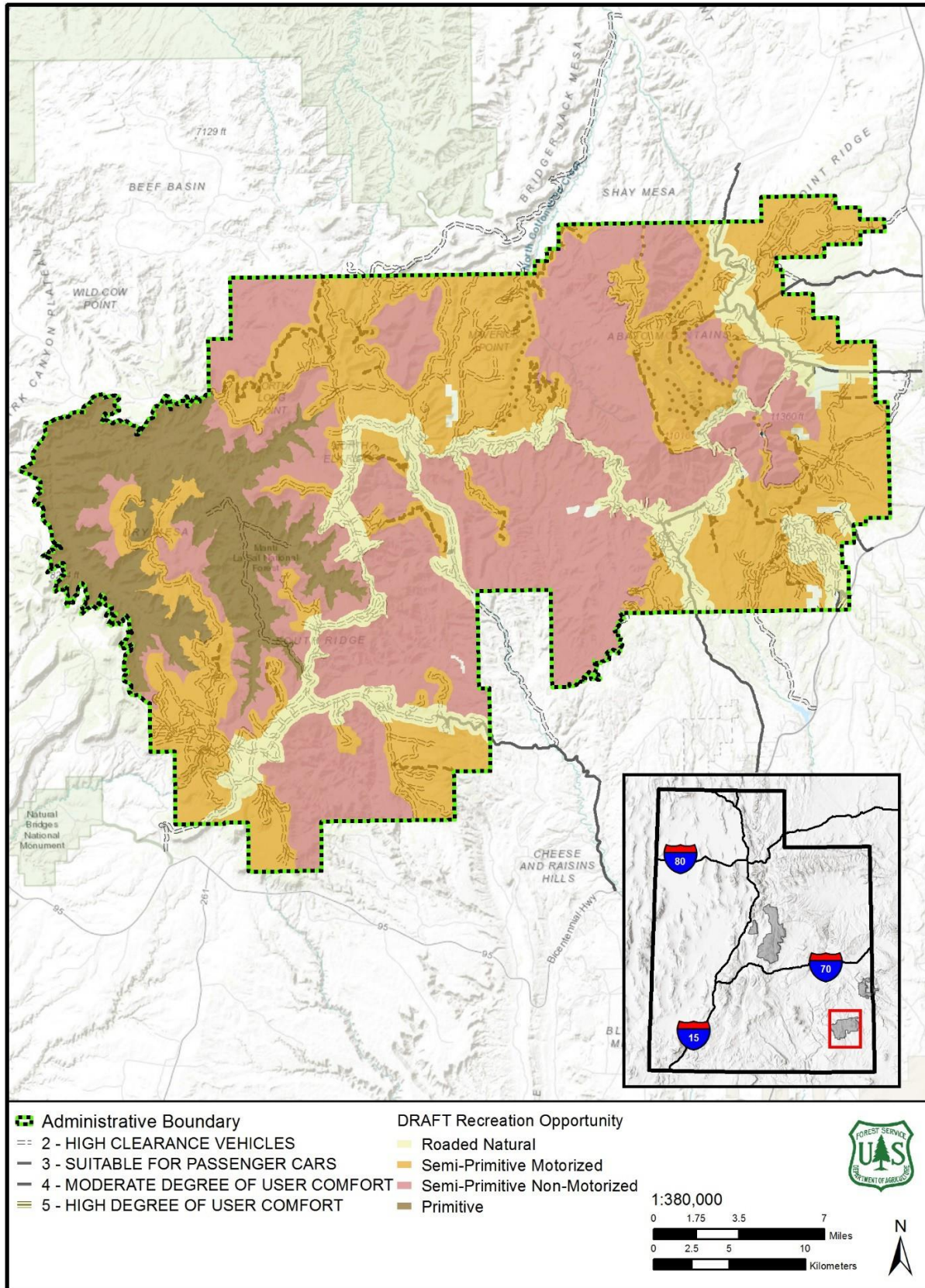
Recreational Opportunities Spectrum, North Zone



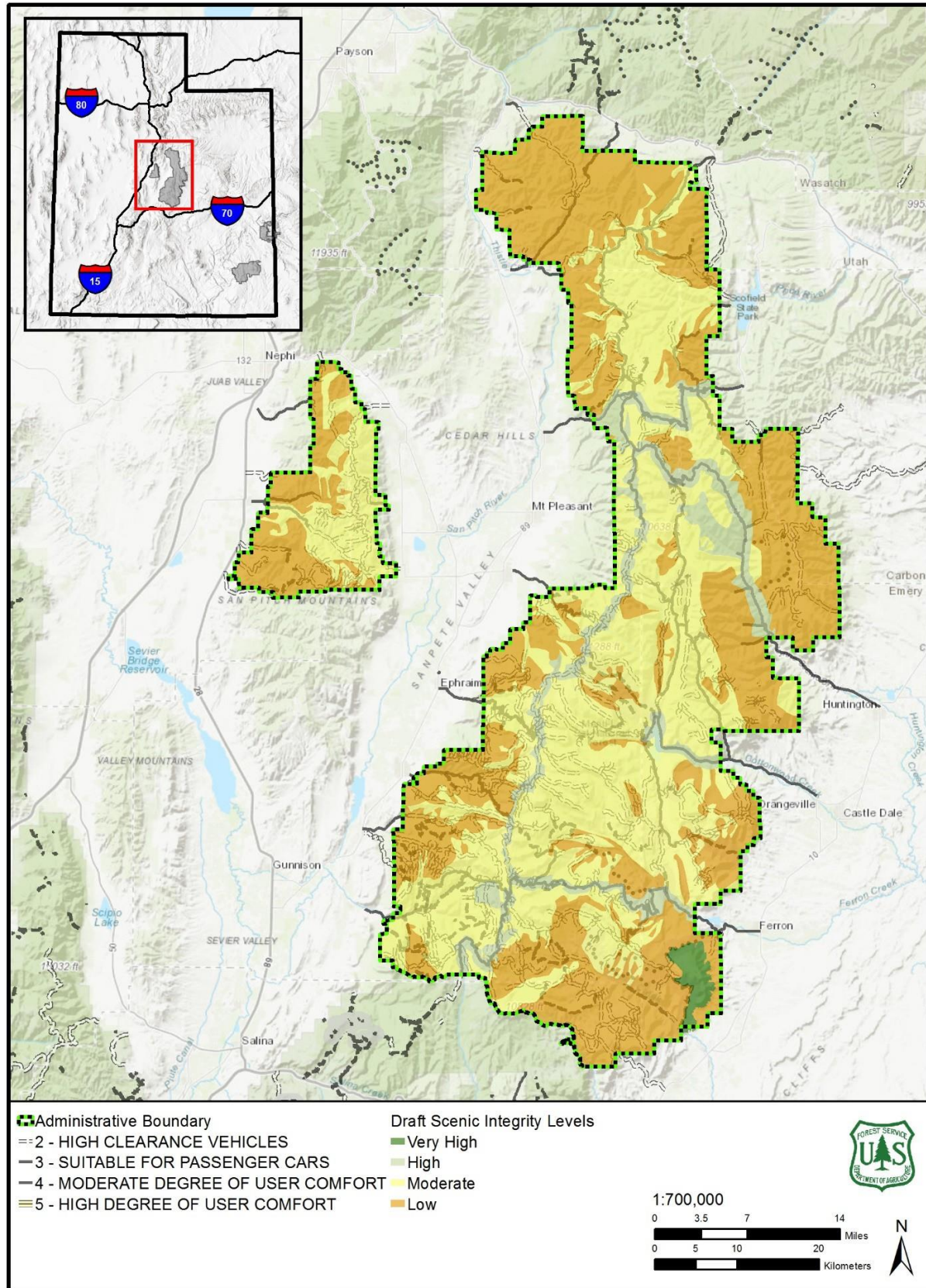
Recreational Opportunities Spectrum, South Zone, Moab



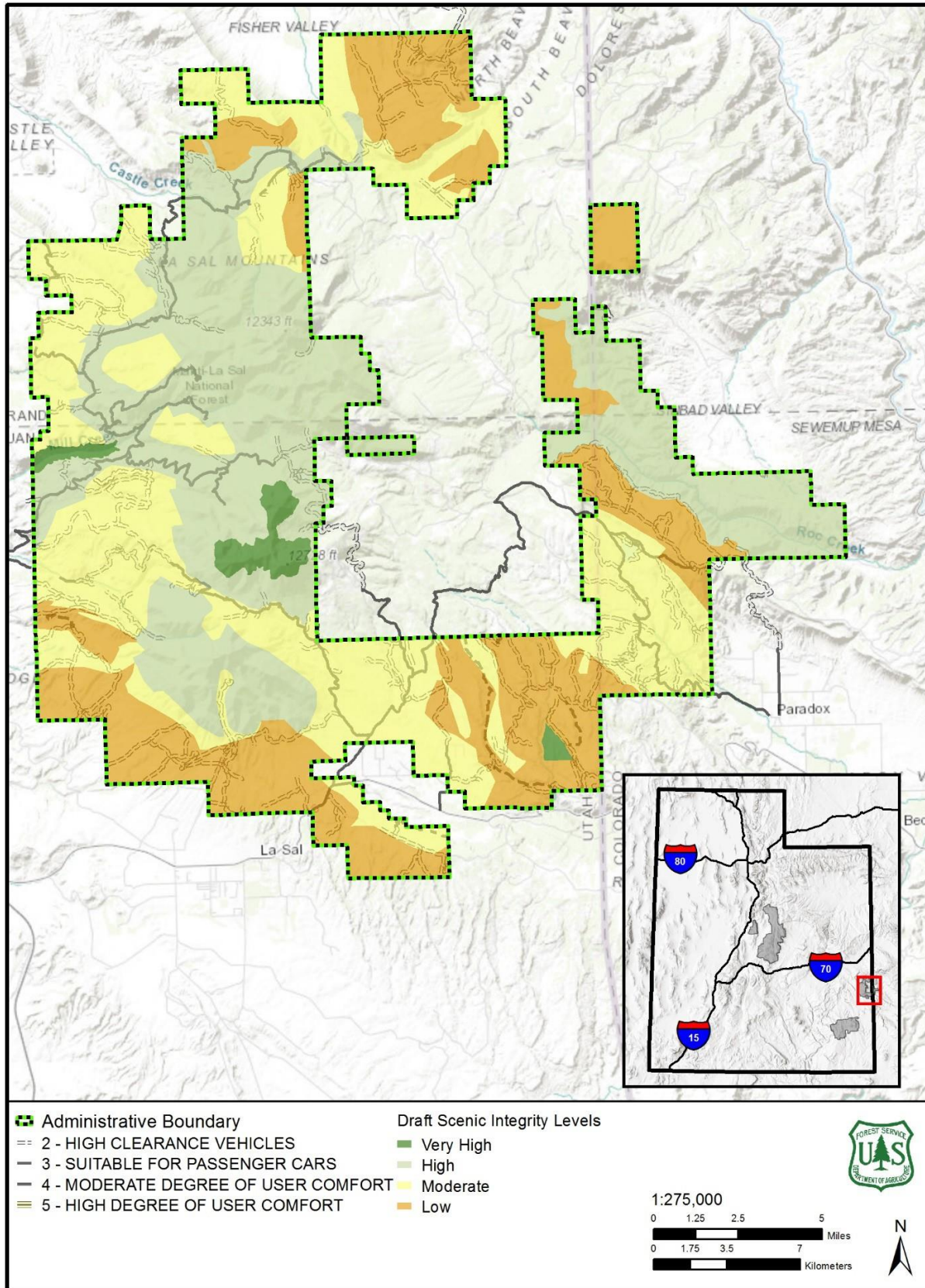
Recreational Opportunities Spectrum, South Zone, Monticello



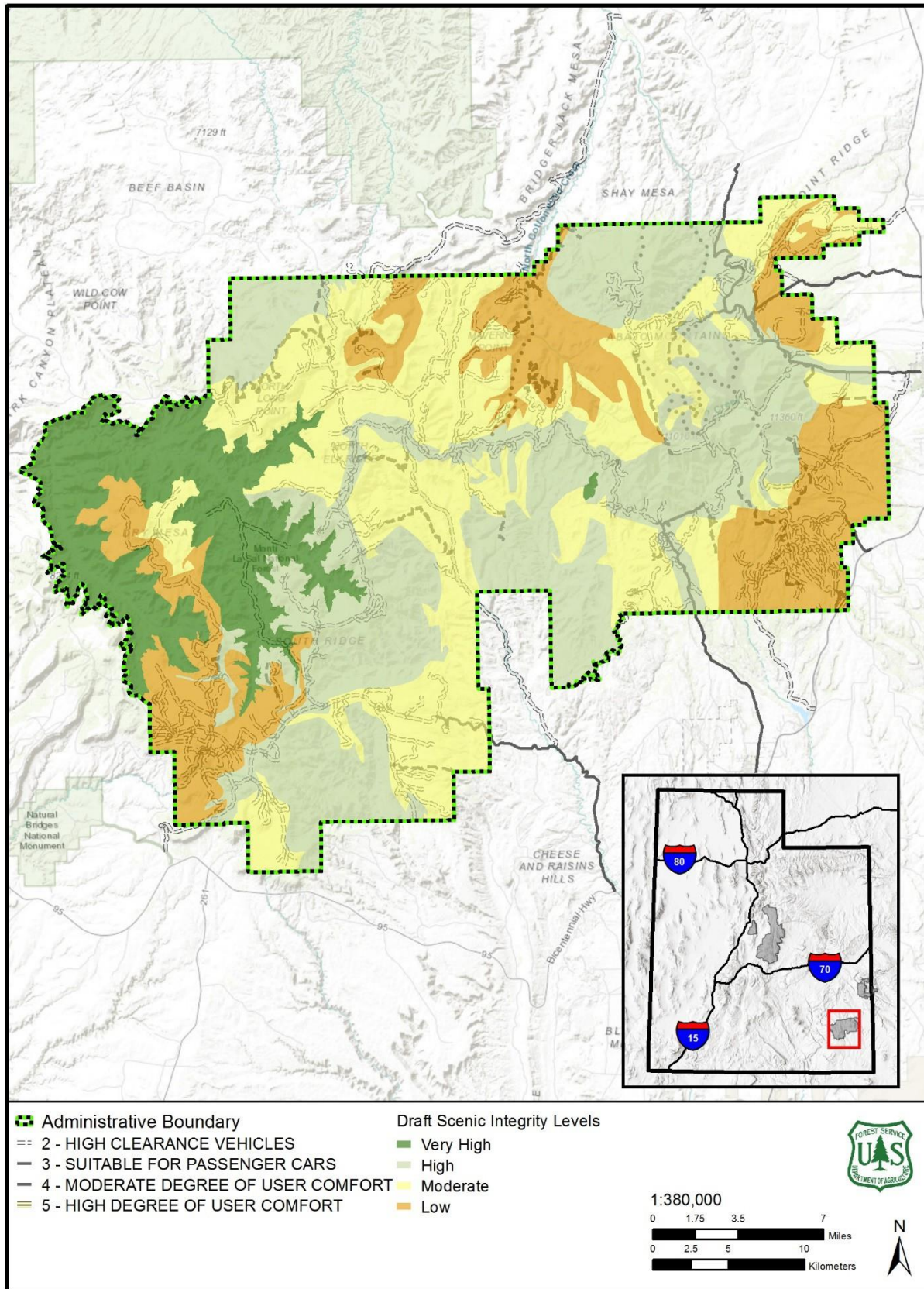
Scenery Management Spectrum, North Zone



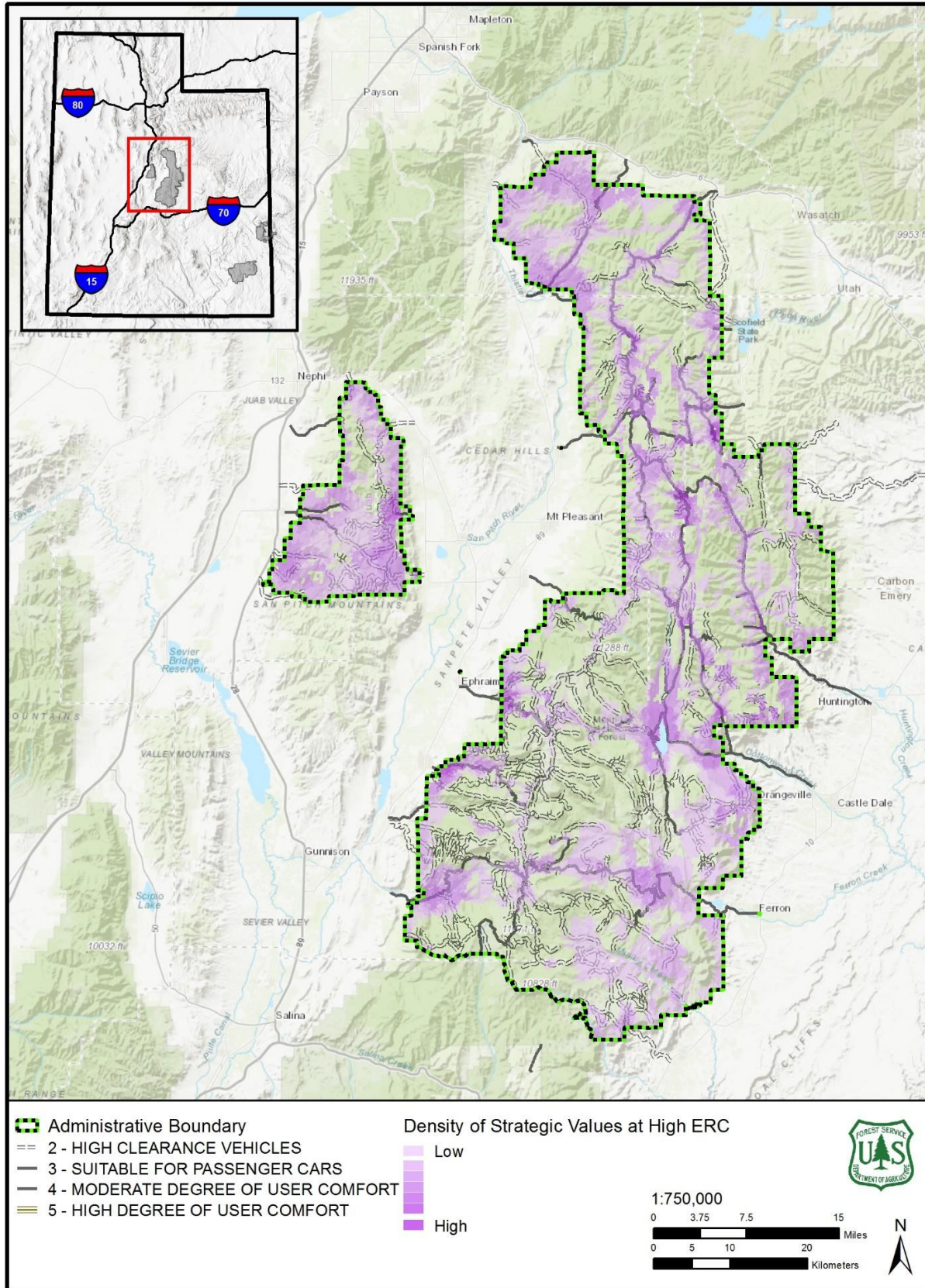
Scenery Management Spectrum, South Zone, Moab



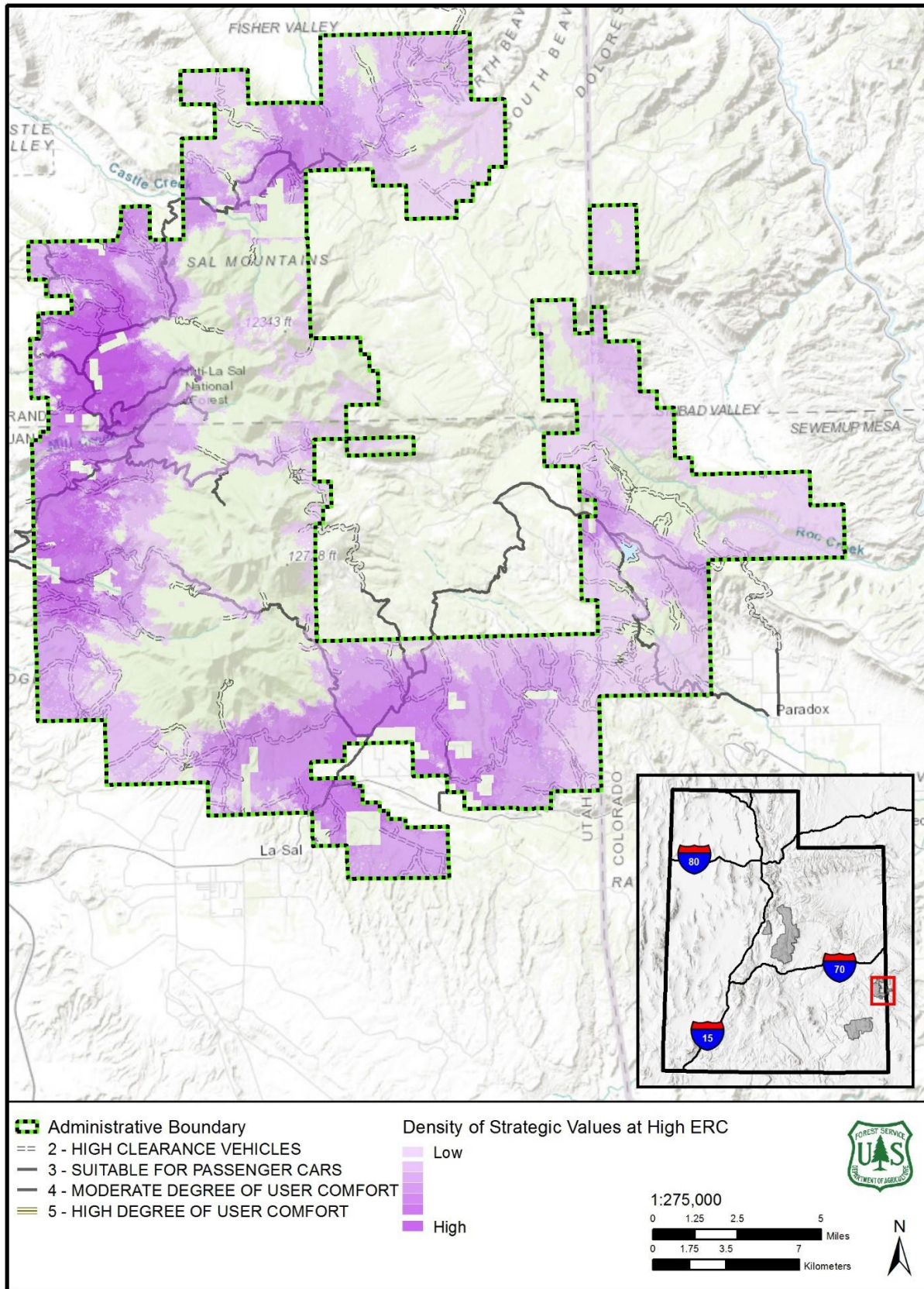
Scenery Management Spectrum, South Zone, Monticello



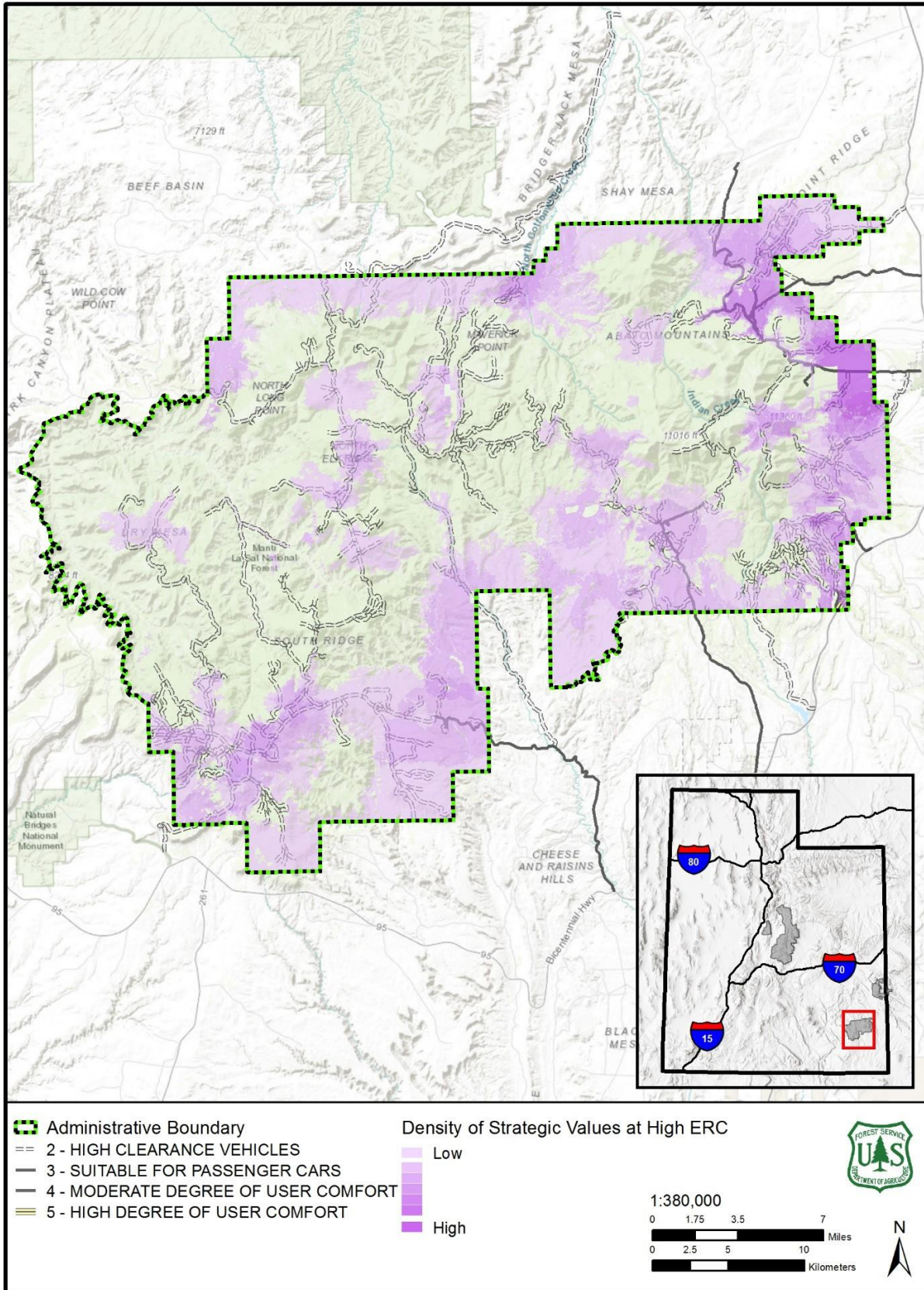
Fire and Fuels, High ERC, North Zone



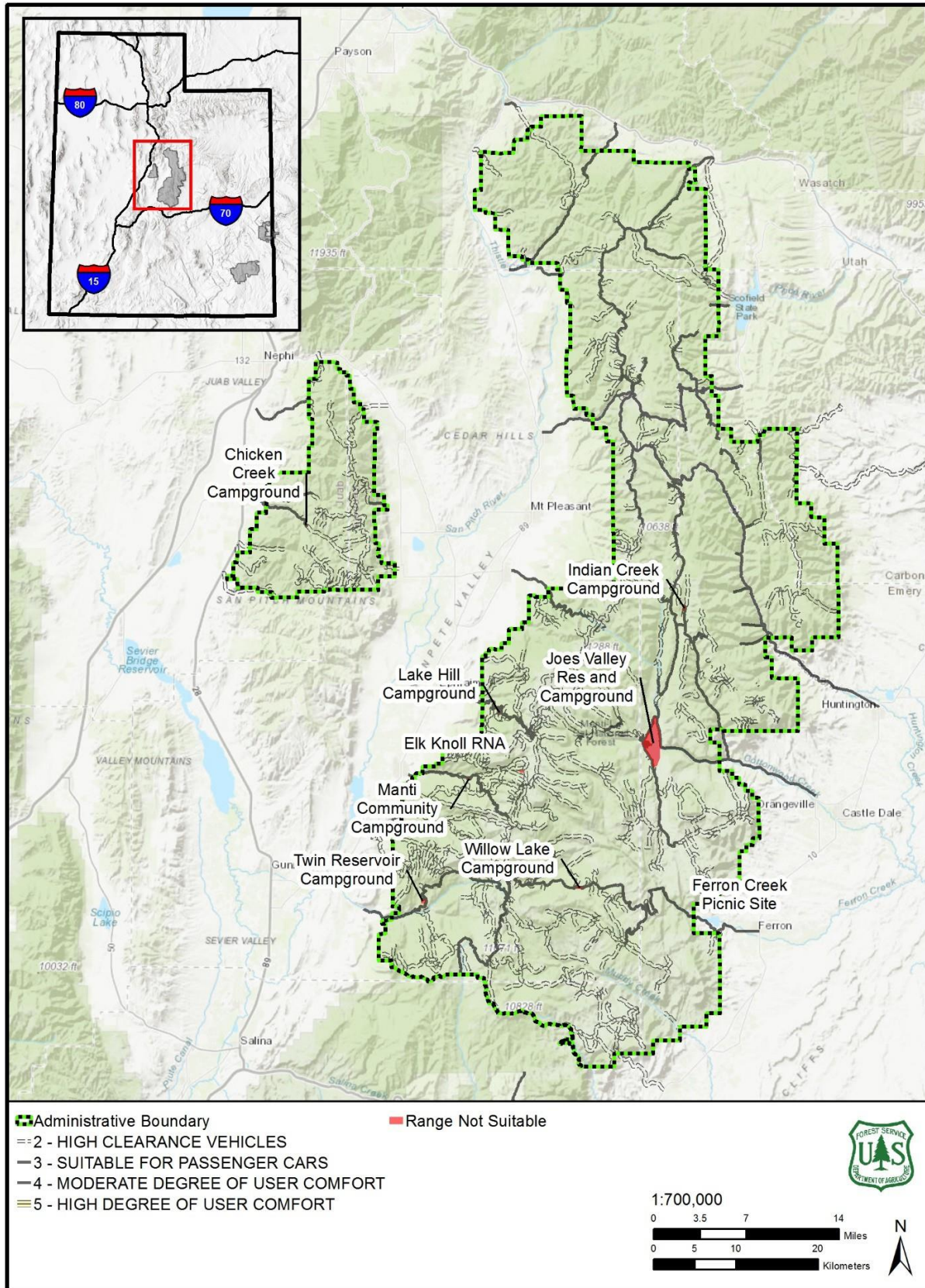
Fire and Fuels, High ERC, South Zone, Moab



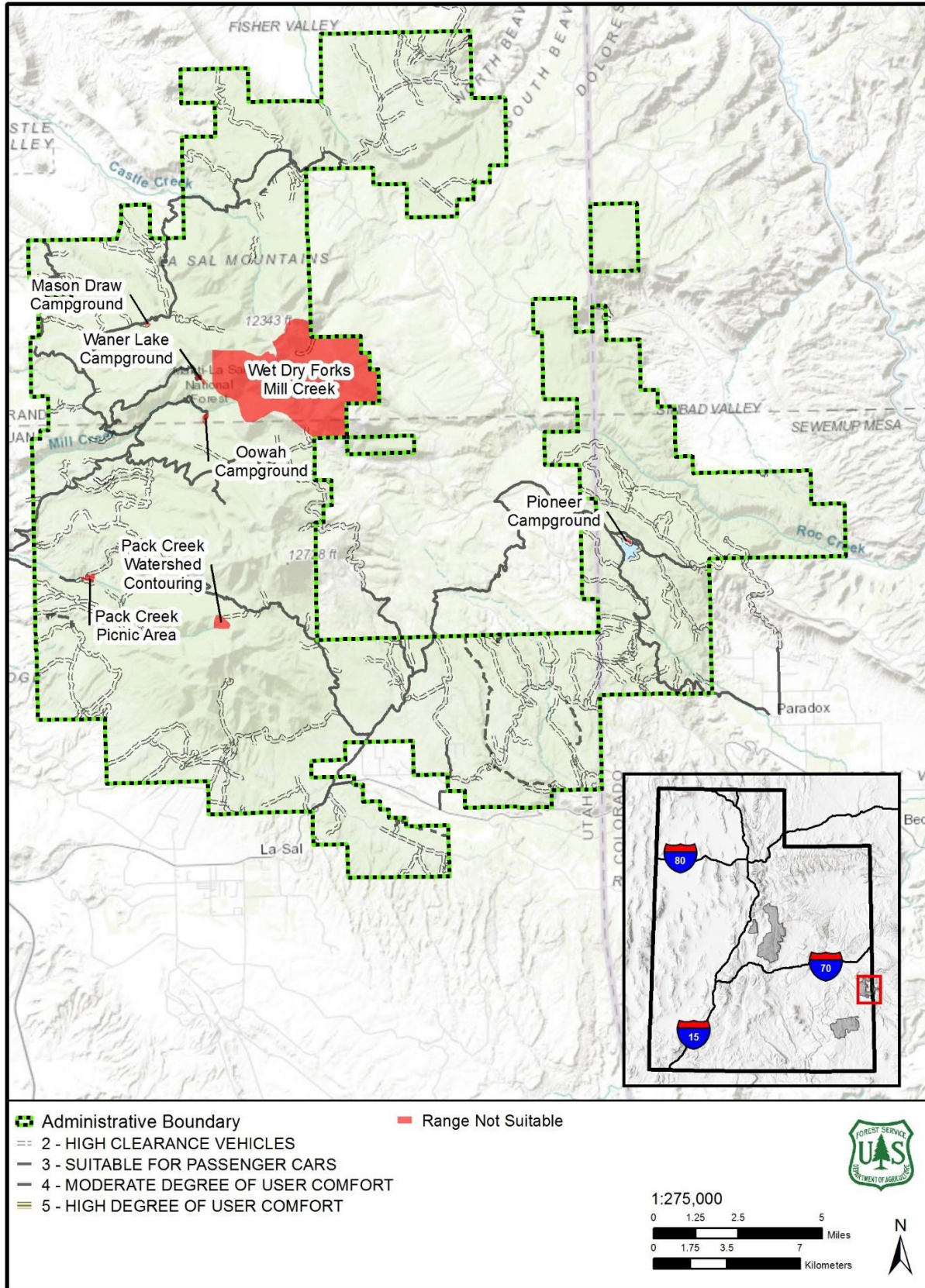
Fire and Fuels, High ERC, South Zone, Monticello



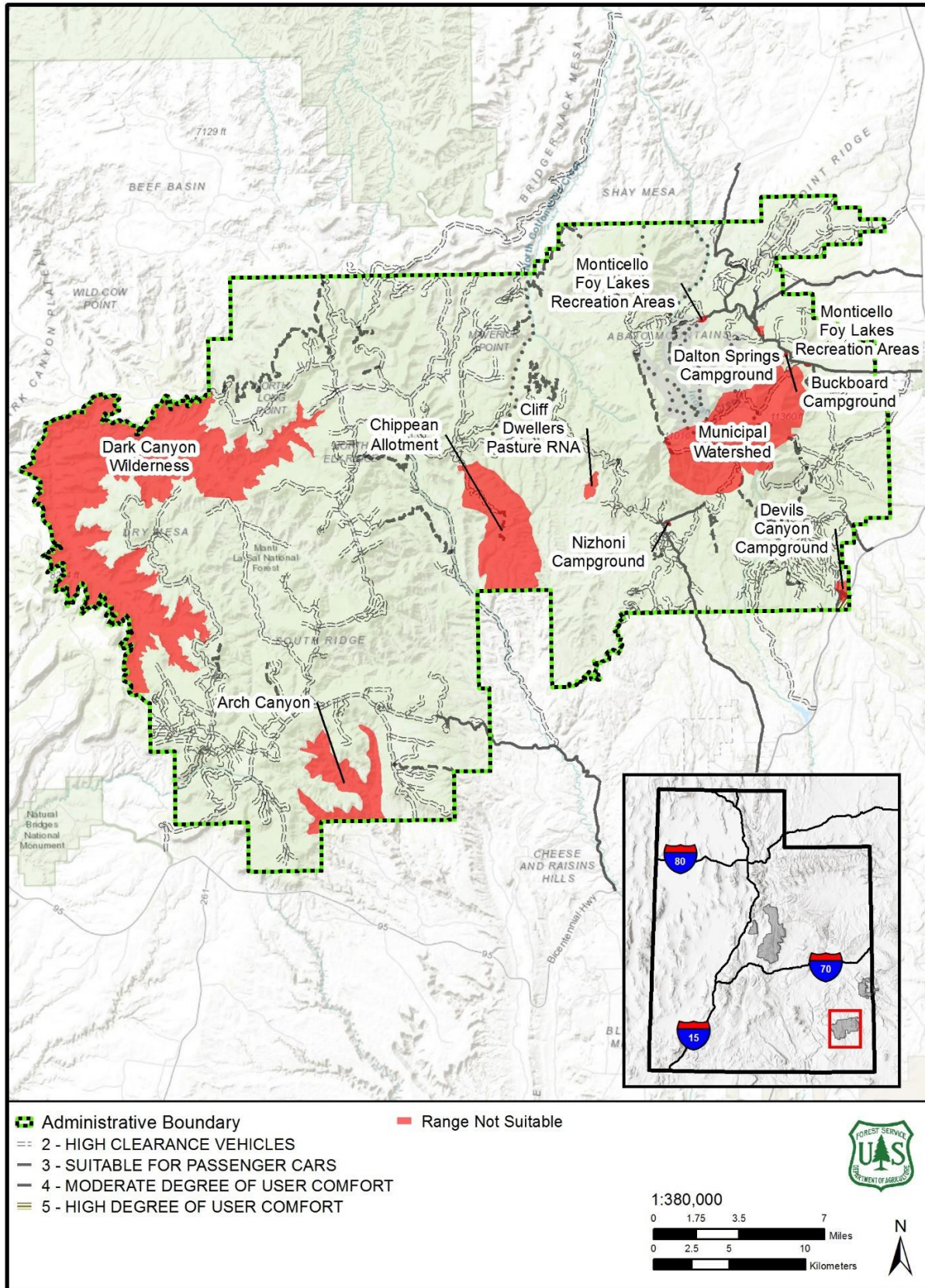
Livestock Grazing and Range, North Zone



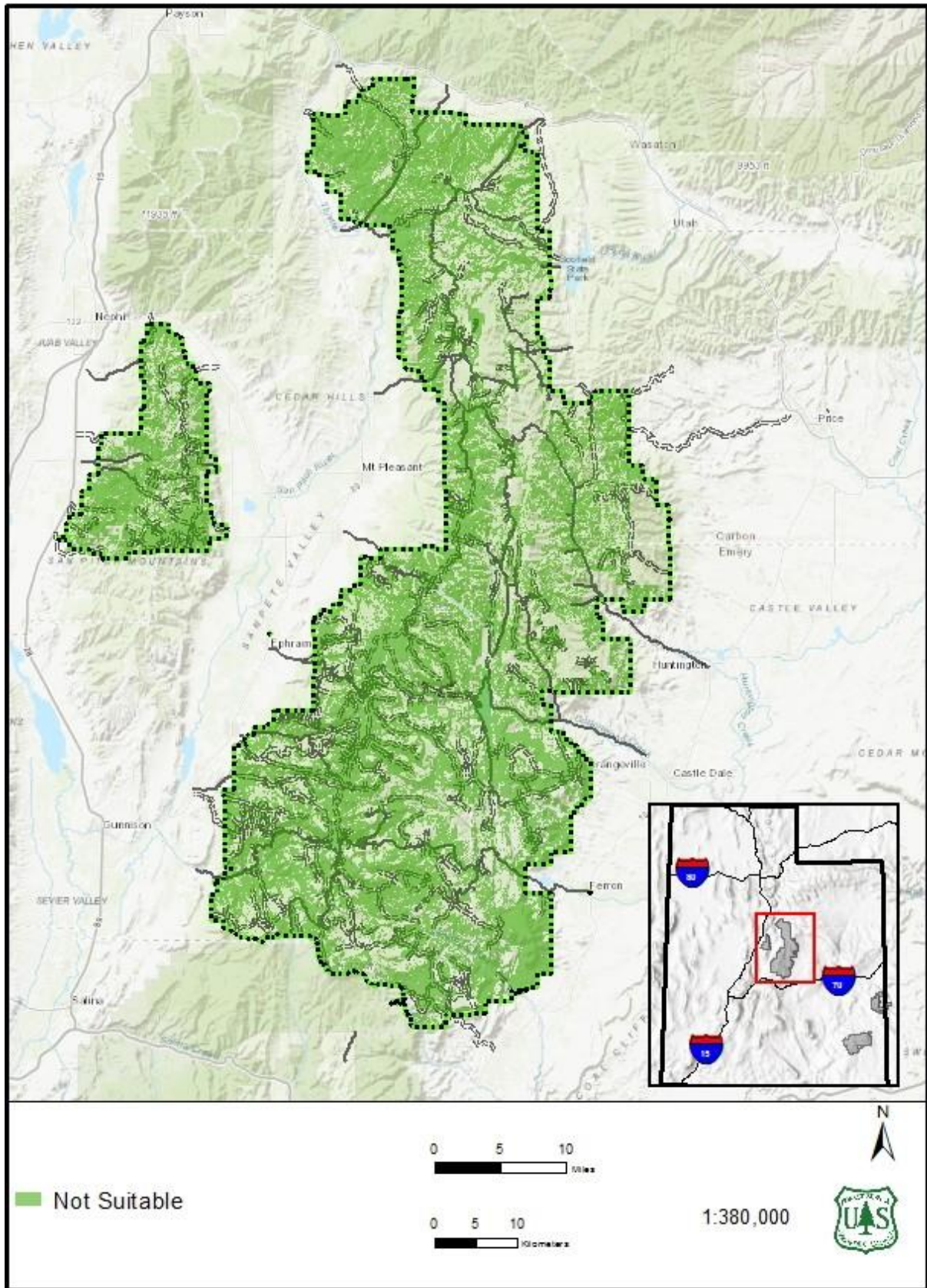
Livestock Grazing and Range, South Zone, Moab



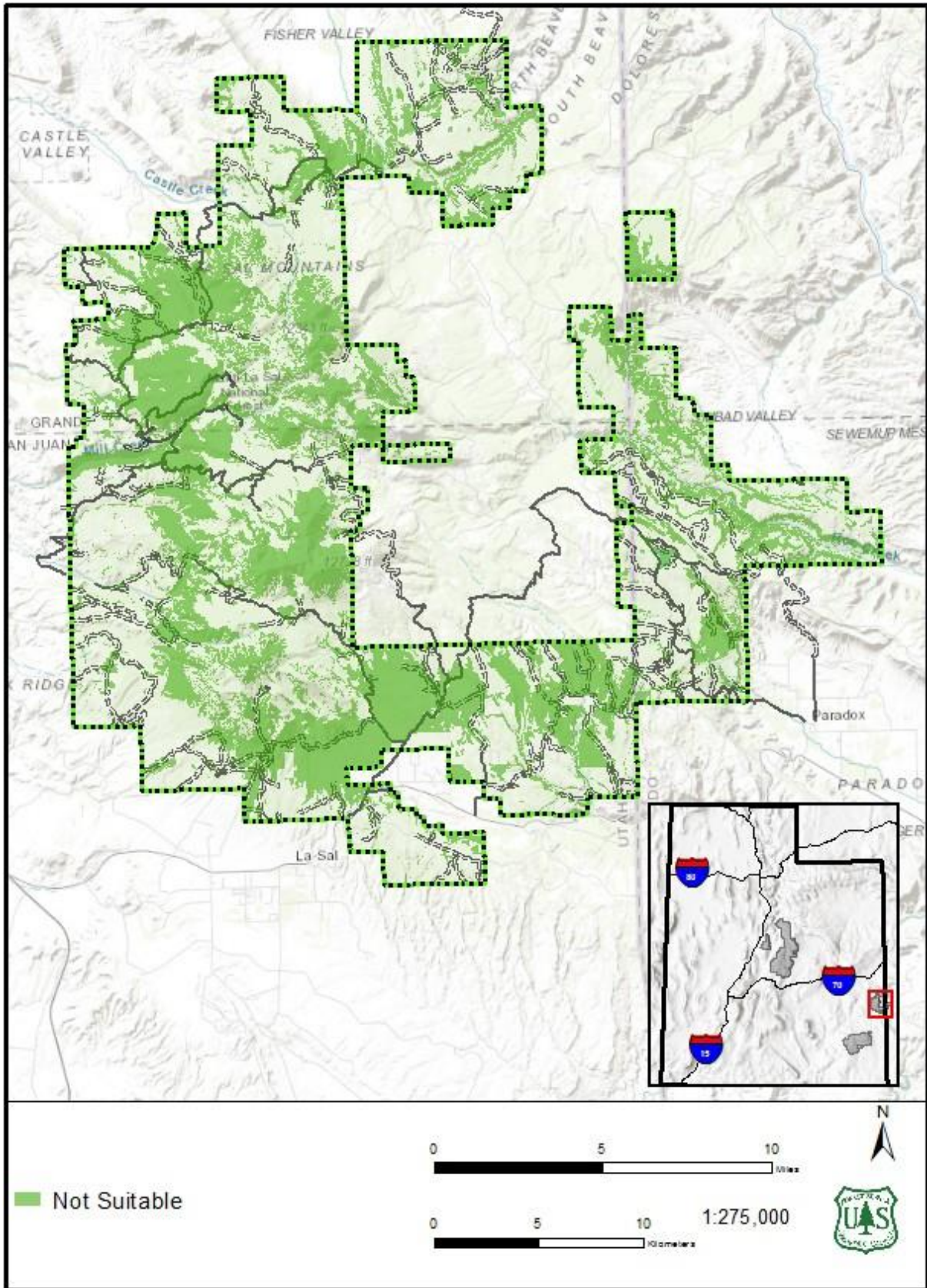
Livestock Grazing and Range, South Zone, Monticello



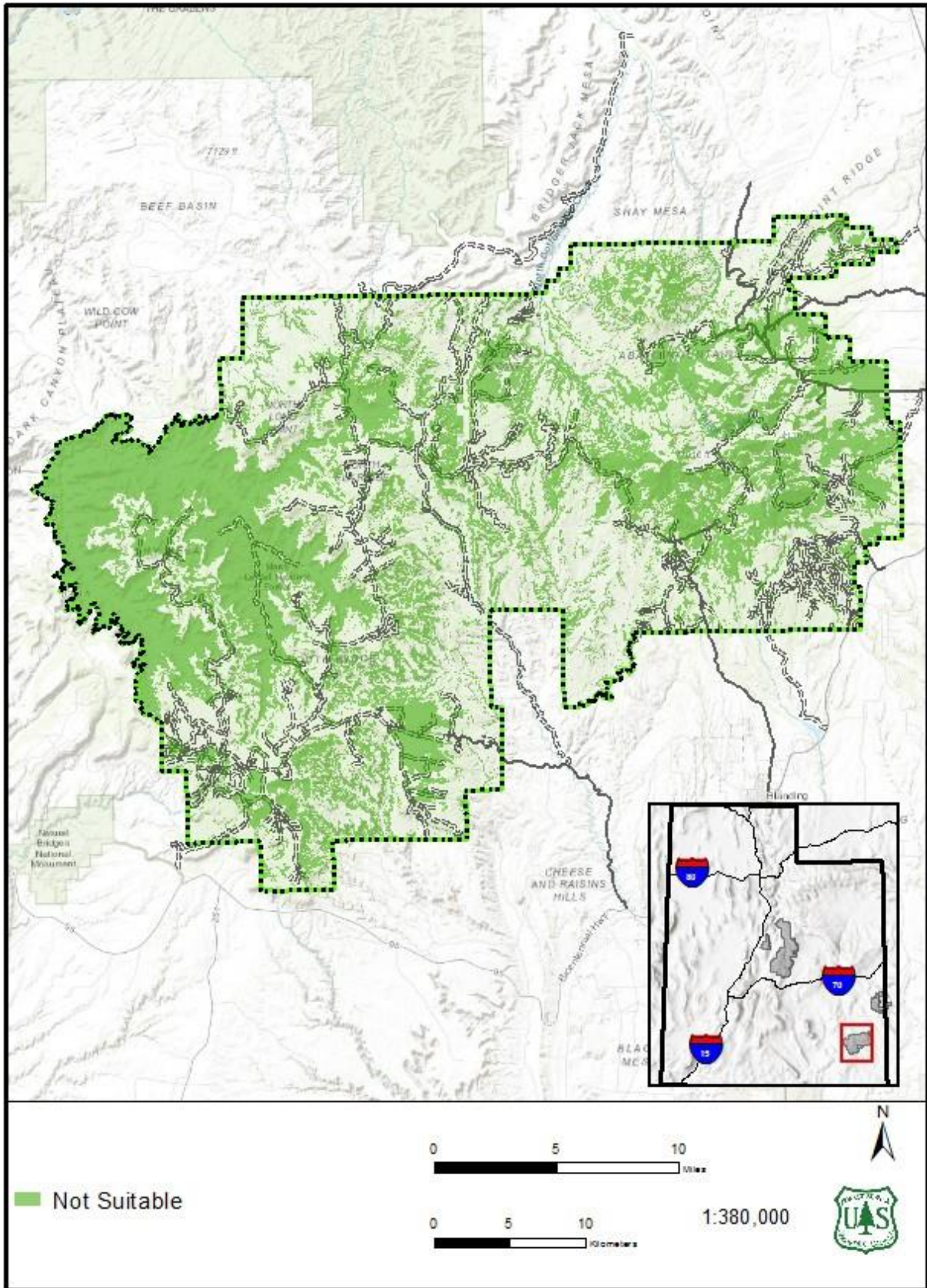
Timber Management, Not Suitable, North Zone



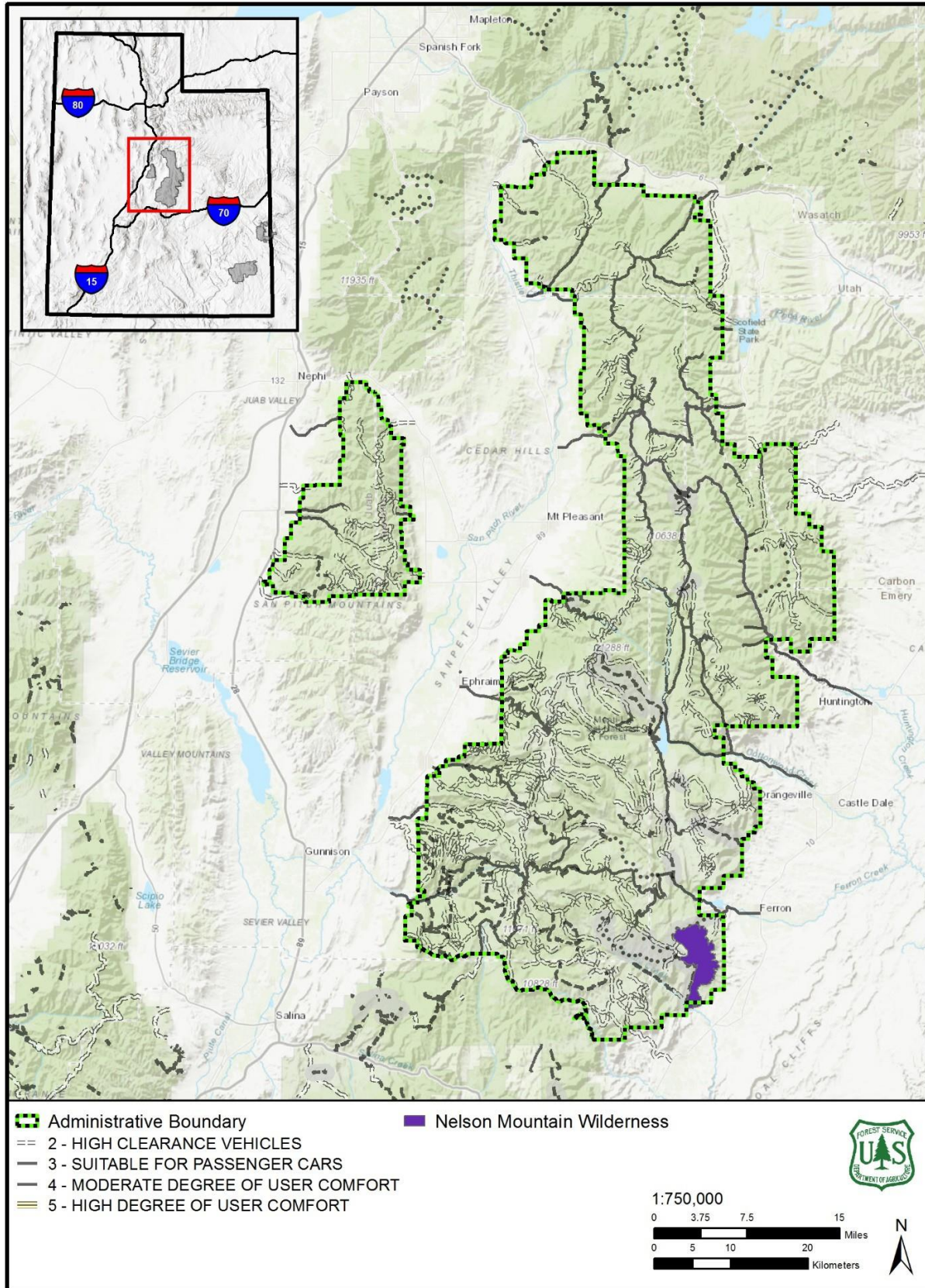
Timber Management, Not Suitable, South Zone, Moab



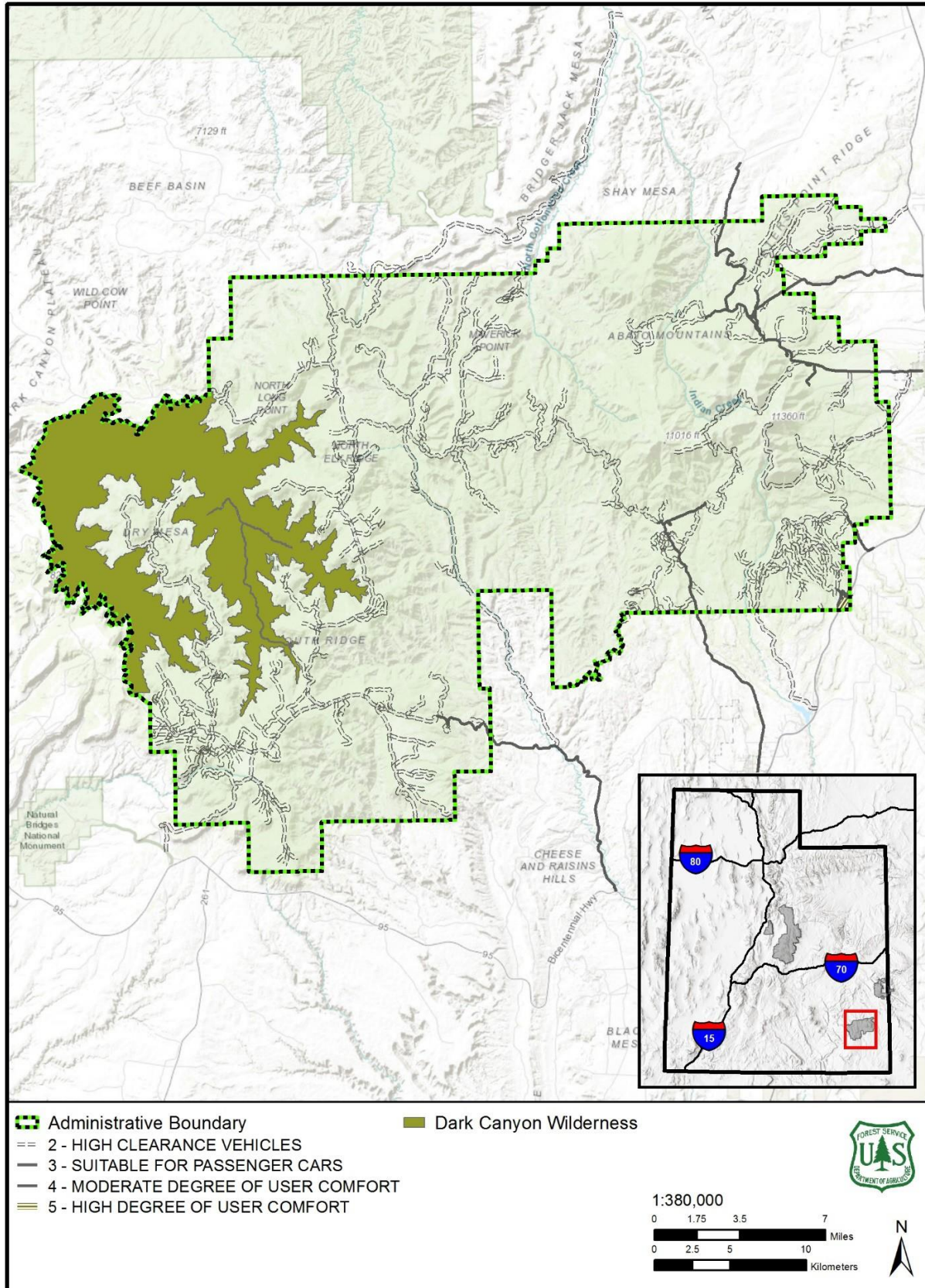
Timber Management, Not Suitable, South Zone, Monticello



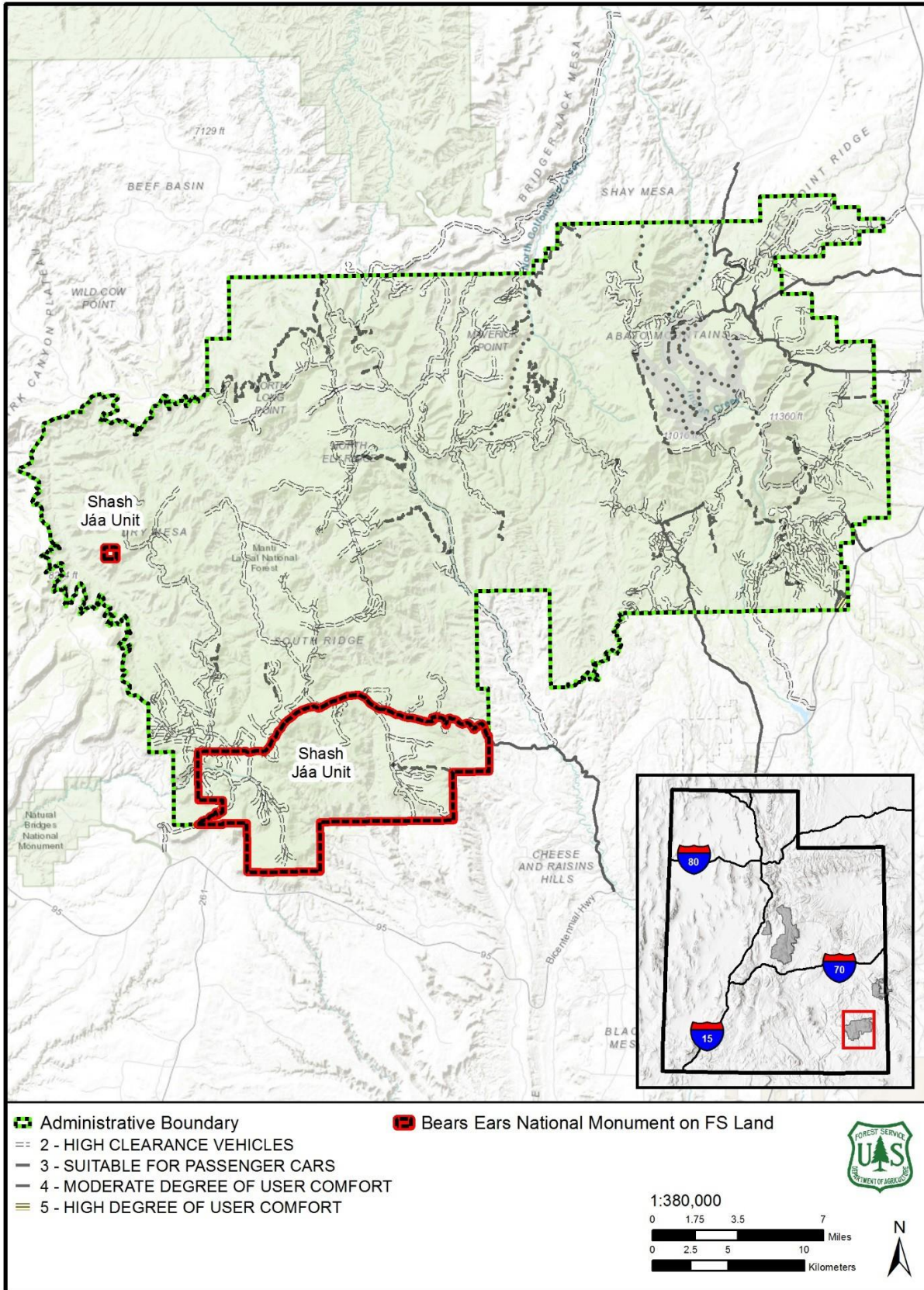
Existing Wilderness, North Zone



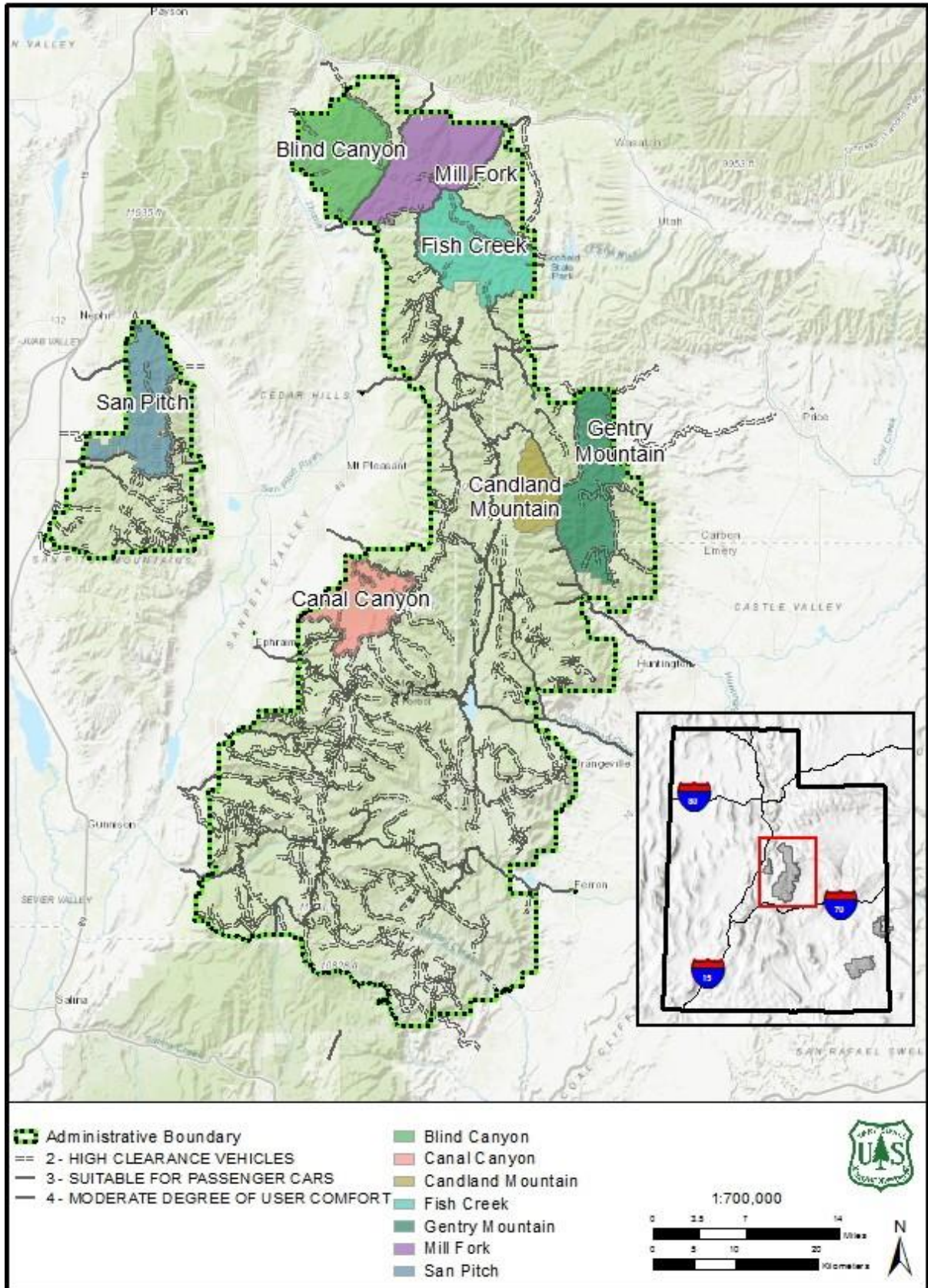
Existing Wilderness, South Zone, Monticello



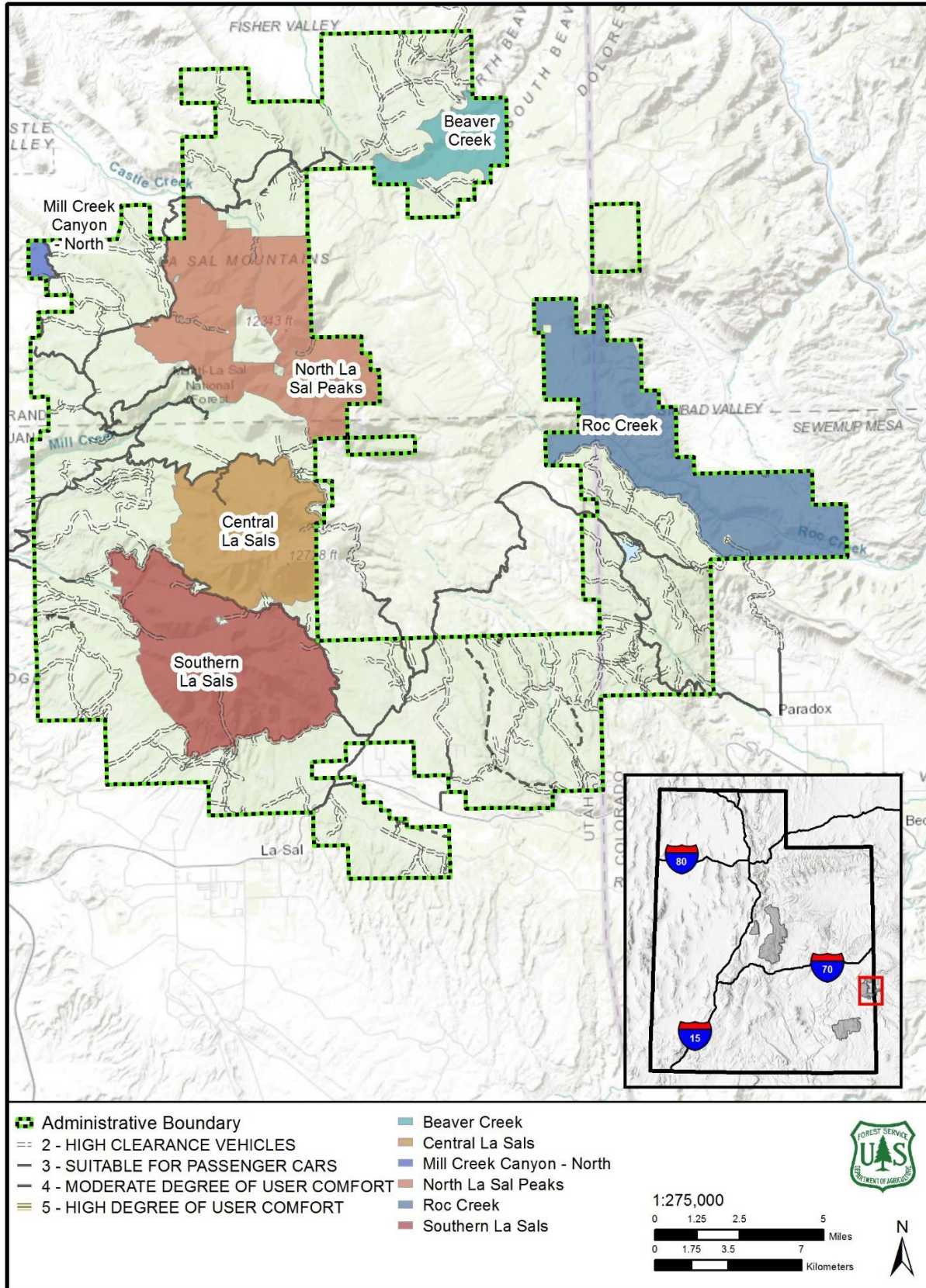
Bear's Ears National Monument, South Zone, Monticello



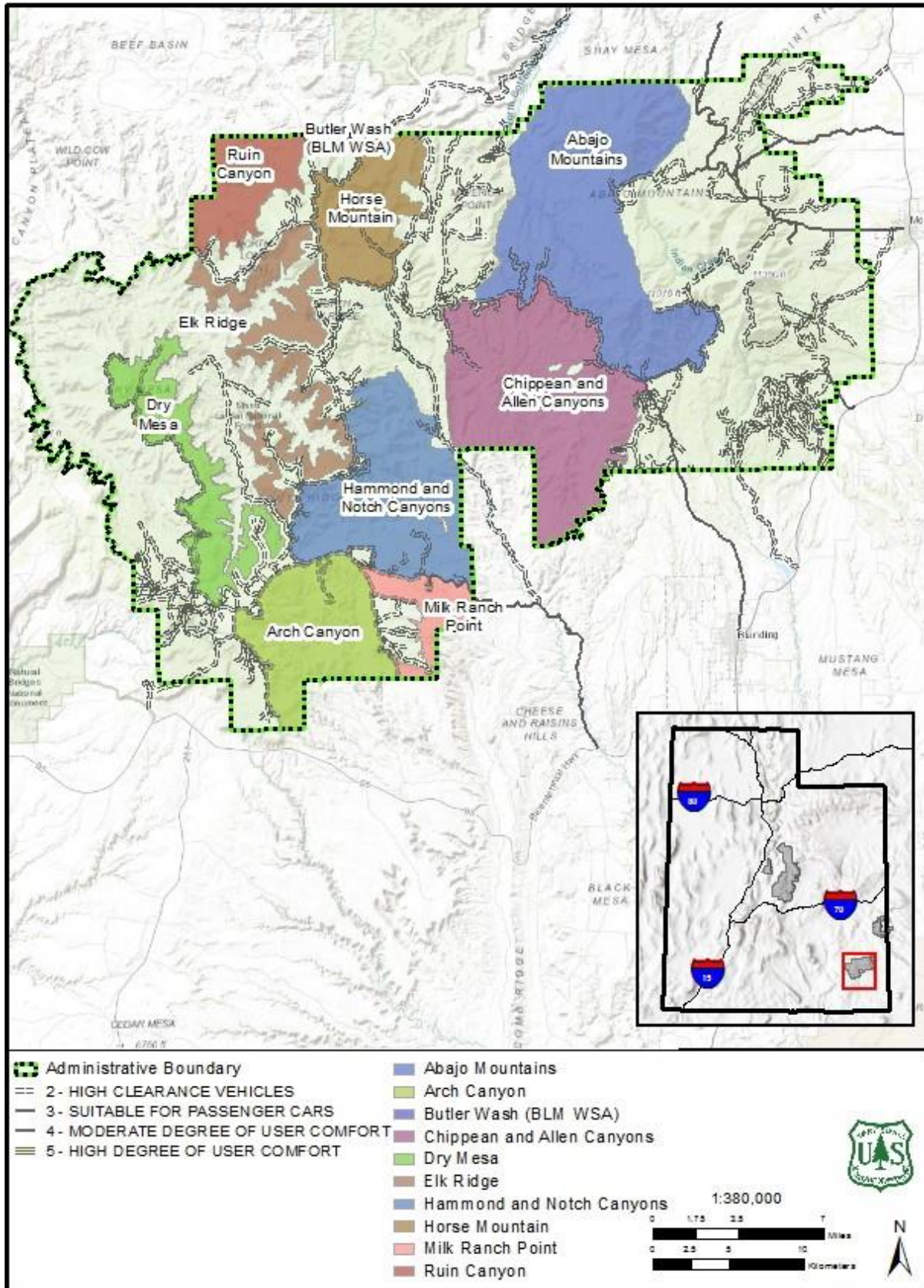
Proposed Wilderness for Further Analysis, North Zone



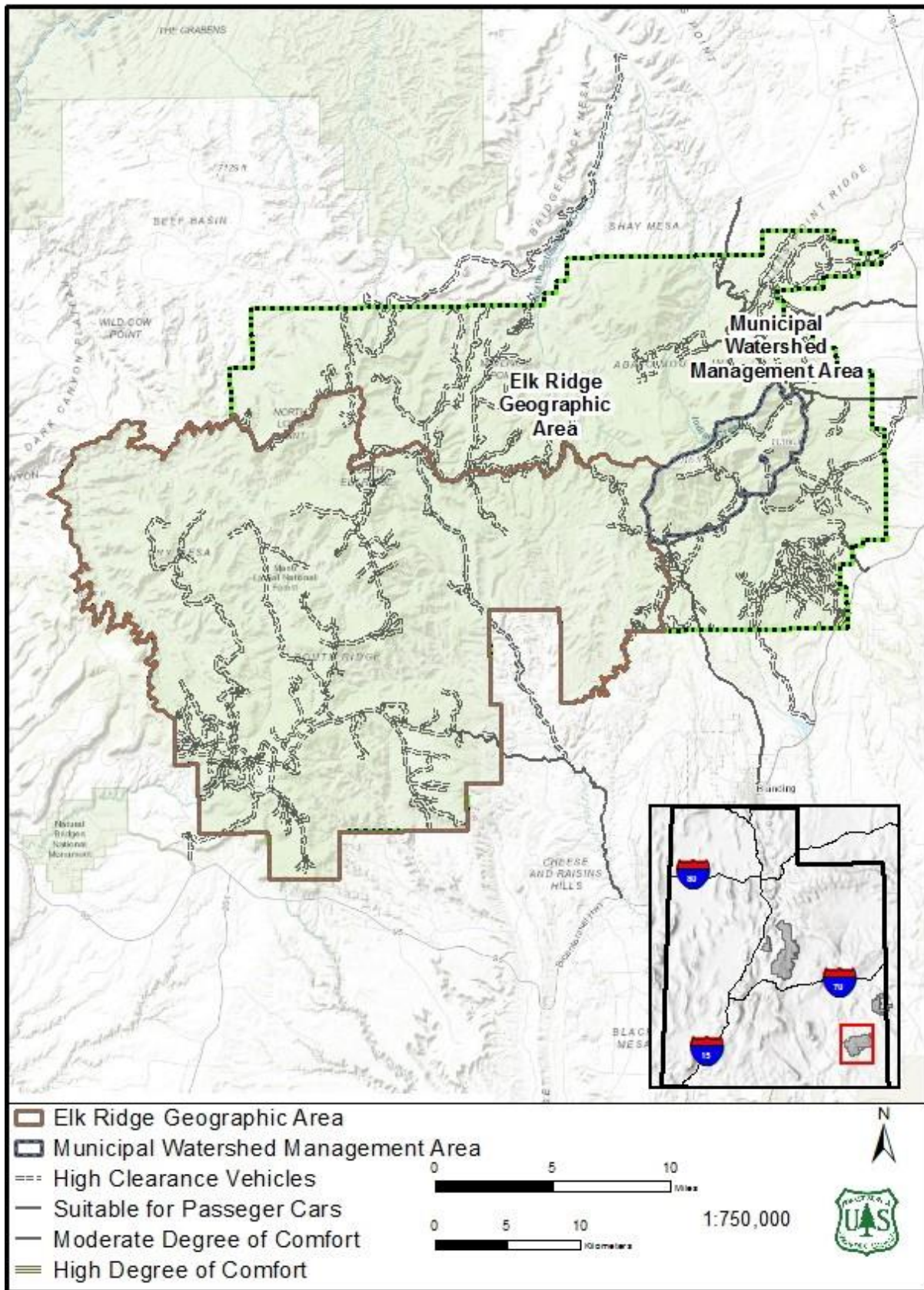
Proposed Wilderness for Further Analysis, South Zone, Moab



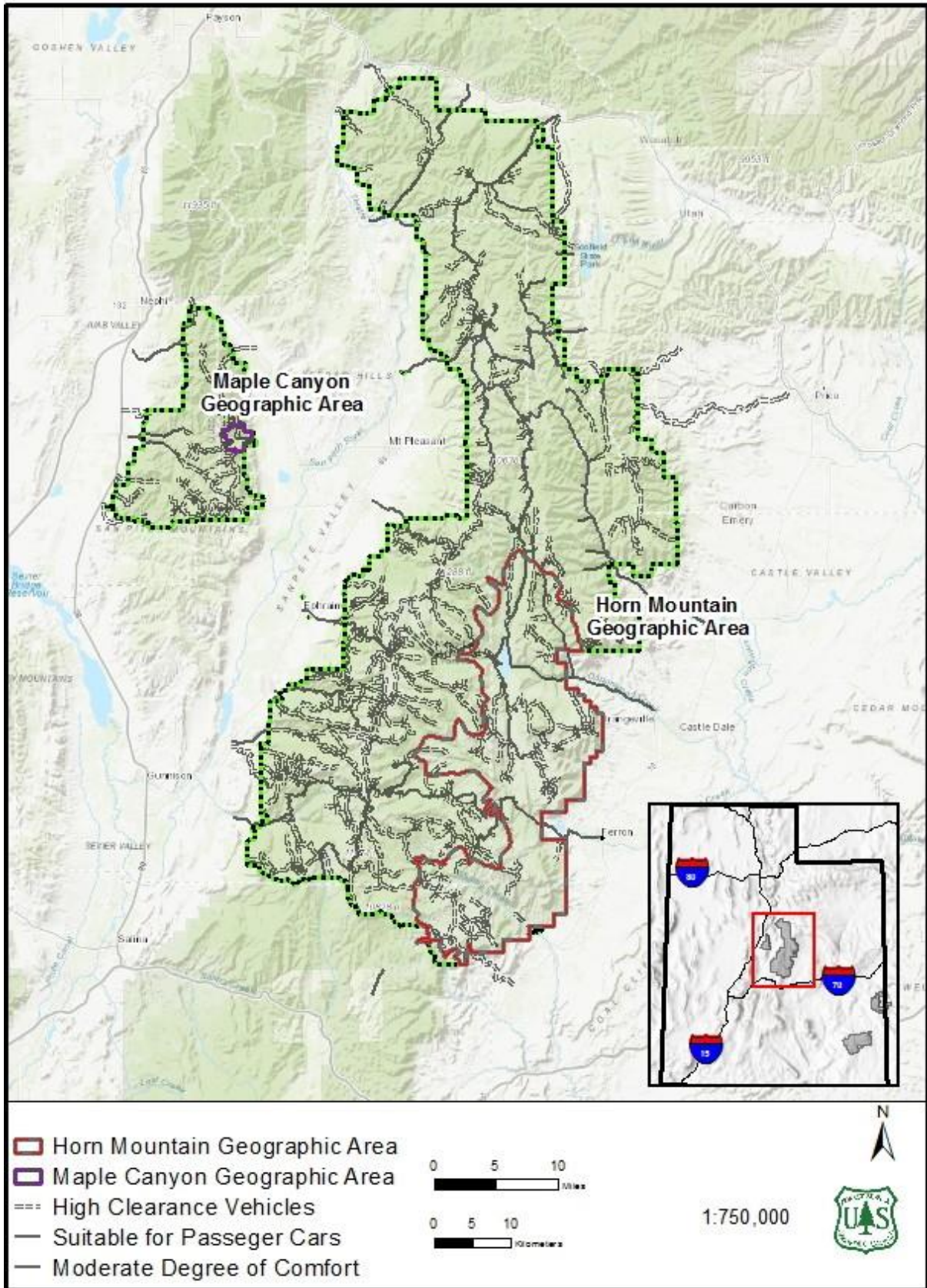
Proposed Wilderness for Further Analysis, South Zone, Monticello



Management and Geographic Areas, South Zone, Monticello



Management and Geographic Areas, North Zone



Geographic Areas, South Zone, Moab

