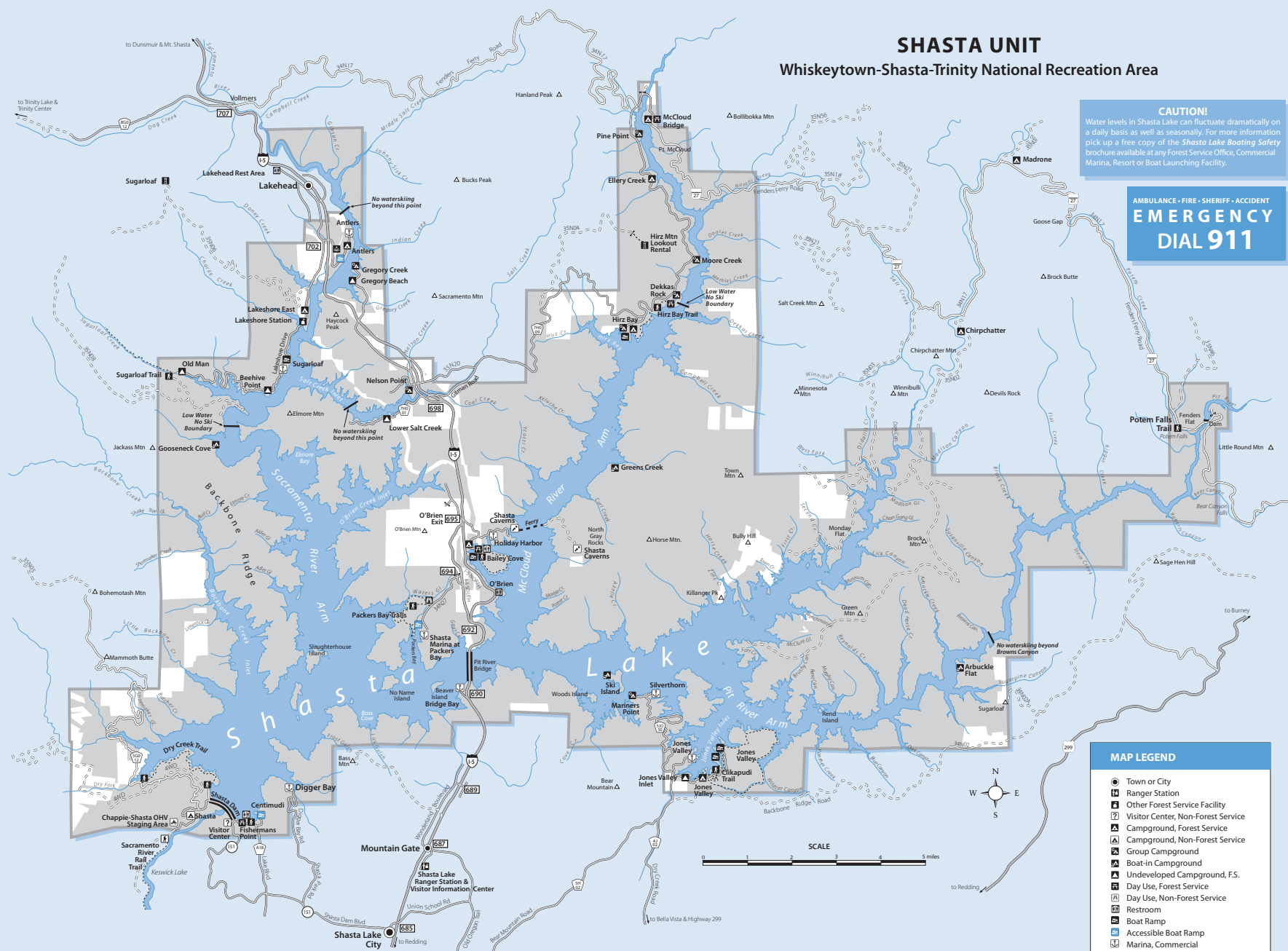


SHASTA UNIT

Whiskeytown-Shasta-Trinity National Recreation Area

CAUTION!
Water levels in Shasta Lake can fluctuate dramatically on a daily basis as well as seasonally. For more information pick up a free copy of the *Shasta Lake Boating Safety* brochure available at any Forest Service Office, Commercial Marina, Resort or Boat Launching Facility.

AMBULANCE • FIRE • SHERIFF • ACCIDENT
EMERGENCY DIAL 911



Camping and Campground Information Continued...

Campsite occupancy Campsites must be occupied the first night and cannot be unoccupied for more than 24 hours. "Saving" campsites is not permitted. Check-out time for family campgrounds is 2:00 pm. Check-out time for group campgrounds is 12:00 noon.

Group Camps Group campgrounds have many of the same features offered at Forest Service family campgrounds but have tables, campfire rings, and grills. Your group is assured exclusive use of the group camp. For reservations call 1-877-444-6777.

Season Most Forest Service campgrounds are open from Memorial Day through Labor Day. A few remain open all year. During the winter months, most water systems are shut down; however, restroom facilities are available. The operating season for commercial campgrounds vary.

Reservations Group Campgrounds and selected family campground reservations are made through National Recreation Reservation Service (NRRS) @ 1-877-444-6777 or on the web at

www.recreation.gov. Several of the public campgrounds in the Shasta Lake area are on a first come, first serve basis.

Length of stay Campground stays are limited to 14 days, as posted at the campground entrance. Camping on the lake shoreline is limited to 14 days per year. Houseboats without Forest Service permits are limited to 30 days per calendar year. Picnic and Day Use Areas are open between 6 a.m. and 10 p.m.

Campfire permits are required when using campstoves, tiki torches, hibachis, barbecues, or campfires outside of a designated campground. Campfire permits are available, at no cost, at any Forest Service, CAL Fire or Bureau of Land Management office.

Special Limitations: Some areas have special limitations regarding campfire use. It is your responsibility to find out what these limitations are. The best way to do this is by contacting a local agency office in the area you intend to visit. Throughout the year, as fire danger increases, fire restrictions are put into effect. Strict compliance with fire restrictions is required.

Some Things To Know

Firewood The gathering of dead and down wood for campfires is allowed. No permit is necessary. All wood must be used or left at campsite.

Bear Precautions The Shasta Unit IS bear country! Potential for encounters with bears can be reduced if visitors follow some very specific do's and don'ts. A brochure called "Bear Precautions for Houseboating and Camping" explains what they are and can be obtained at the Shasta Lake Ranger Station or on the web at www.fs.usda.gov/stn/.

Privately Owned Houseboats Authorization is needed to have a privately owned houseboat on Shasta Lake for more than 30 days per calendar year. For more information, please contact the Shasta Lake Ranger Station at (530) 275-1587.

Law Enforcement The Shasta County Sheriff's Department works closely with the Forest Service in enforcing local and California

Boating Laws. If you need assistance, contact the Sheriff's Patrol or any Forest Service employee. If you have an emergency, please dial 911.

Garbage Receptacles are located at campgrounds, picnic areas, and boat ramps. Garbage is not collected at boat-in campgrounds and most undeveloped sites. Please pack it out to the nearest container. Do not bury trash or dispose of it floating in streams.

Pets Pets are permitted but must be on a leash and under restraint in campgrounds, picnic areas, and at boat ramps.

Campground Reconstruction Occasionally campgrounds are closed for maintenance or other work. This is part of an on-going program to upgrade the facilities at Shasta Lake.

Fireworks Fireworks are prohibited in all National Forests and Shasta County which includes all of Shasta Lake!

Firearms Firearms may not be discharged within 150 yards of residences, buildings, campsites or developed recreation sites, or across roads or bodies of water.

MAP LEGEND

- Town or City
- Ranger Station
- Other Forest Service Facility
- Visitor Center, Non-Forest Service
- Campground, Forest Service
- Campground, Non-Forest Service
- Group Campground
- Boat-in Campground
- Undeveloped Campground, F.S.
- Day Use, Forest Service
- Day Use, Non-Forest Service
- Restroom
- Boat Ramp
- Accessible Boat Ramp
- Marina, Commercial
- Amphitheater
- Watchable Wildlife Site
- Trail, Forest Service
- Trail, Non-Forest Service
- Lookout
- Point of Interest, Commercial
- Primary Highway
- Freeway Exit #
- Paved Road
- Improved Road, Dirt
- Unimproved Road (not maintained for passenger cars)
- Trail
- Locked Gate
- Private Land within Shasta Unit - Whiskeytown-Shasta-Trinity National Recreation Area

