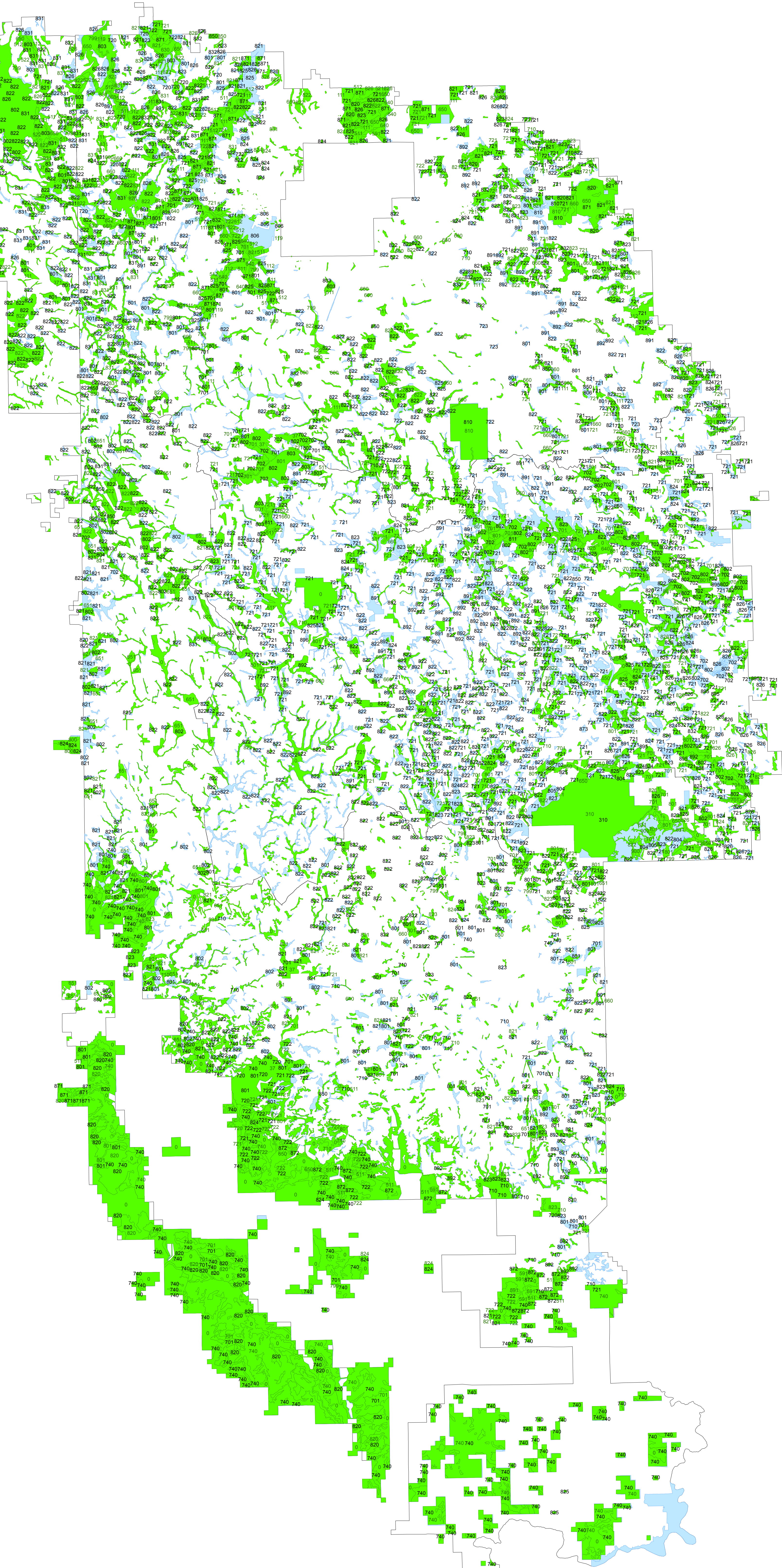
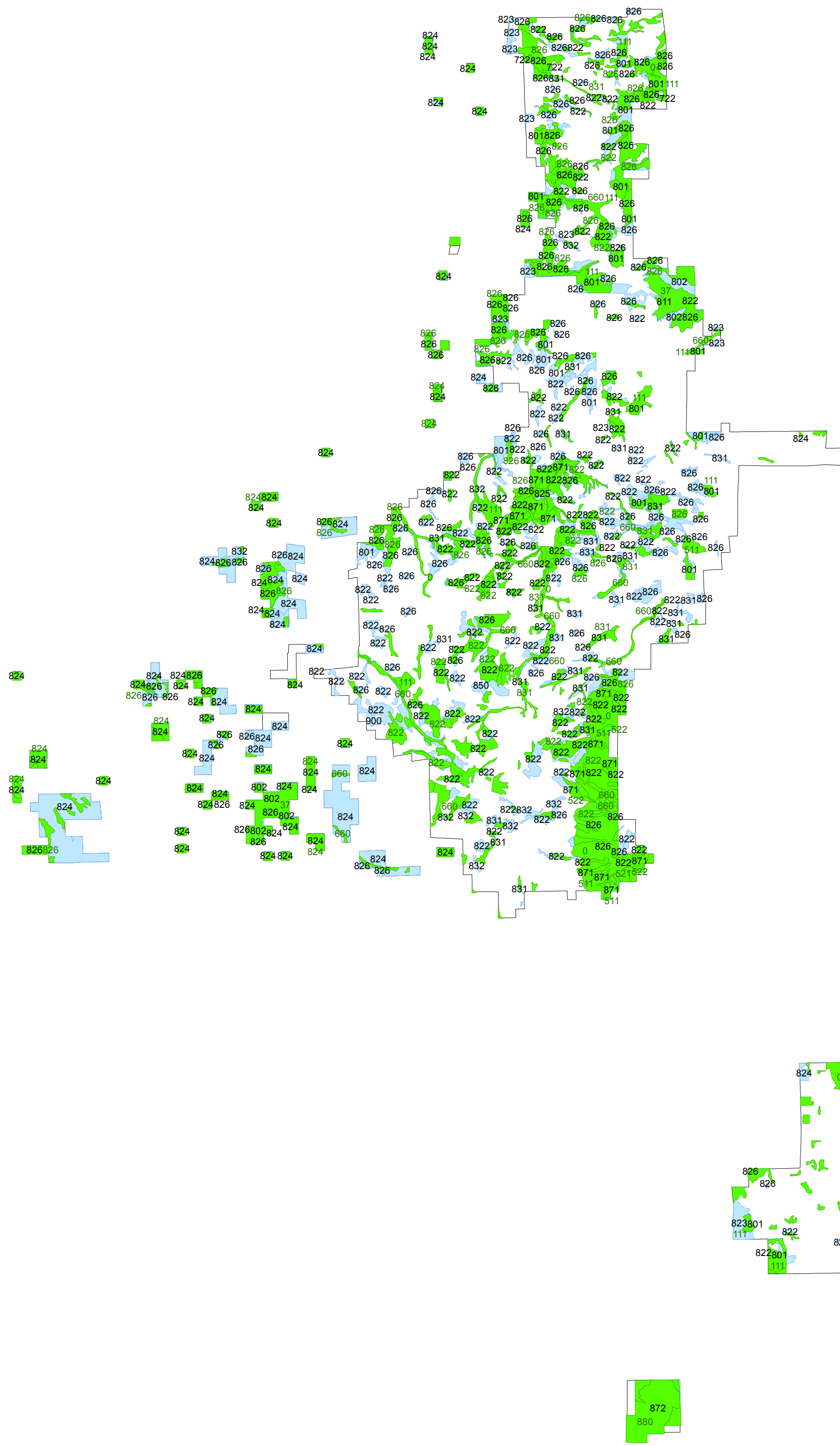


# Map C = Unsuitable with code labels



## Legend

- FP Unsuitable
- 2020 Unsuitable
- District\_Boundary

FP = Forest Plan Revision

### Unsuitable Codes

code	name
310	Wilderness
701	Old-growth other than landscape areas (site level)
702	Old-growth landscape areas
710	Restocking within 5 years cannot be assured
720	Irreversible resource damage likely with current logging technology
721	Topography prevents harvesting by tractor or by cable
722	Irreversible resource damage likely due to unstable soils
723	Previously Suitable - topography prevents harvest
740	Adequate response information is lacking (i.e. sites with low productivity)
800	Critical game habitat
801	Old-growth other than landscape areas (site level)
802	Old-growth landscape areas
803	Botanical areas
804	Riparian areas
805	Incompatible with multiple use - critical wildlife habitat
810	Experimental Forest, Range or Watershed
811	Research Natural Area (RNA), not suitable lands
820	Minimum level allocation - uneconomical
821	Steep slopes
822	Timber type currently has low product value/lack of market(Aspen)
823	Road construction problems prevent access development
824	Isolated patch of forest land
825	Developed recreation site other than ski area
826	Bur Oak
830	Remote Recreation
831	Paper Birch
832	Other hardwoods
850	Administrative site
860	Seed Collection Area
871	Backcountry recreation
891	Converting pine to aspen
892	Converting pine to meadow
895	Converting conifers to hardwoods other than aspen
896	Converting other conifers to meadows other than ponderosa pine
900	Incapable of producing industrial wood