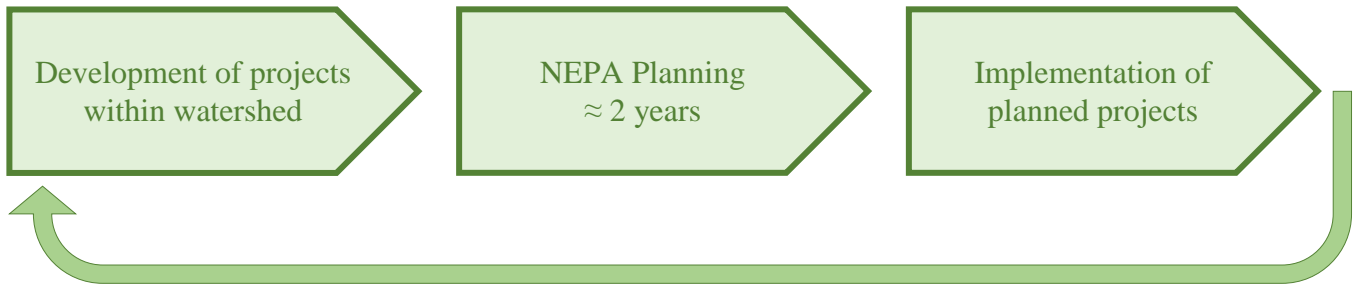


Monongahela National Forest – North Zone

Watershed Management Order of Entry Strategy – July 2020

The National Environmental Policy Act (NEPA) requires federal agencies to consider environmental effects of their actions. In order to provide an efficient NEPA review and decision-making process, Monongahela National Forest has developed a watershed-based order of entry strategy. Project planning will focus on one large-scale watershed every year on the “North Zone” of the Forest. The North Zone includes the Cheat-Potomac and Greenbrier Ranger Districts. With concurrent planning on the “South Zone”, all Monongahela National Forest lands will receive environmental planning and application of the NEPA process, including public involvement, over the next decade.

WATERSHED *noun.*
An area of land that drains or “sheds” water into a specific waterbody.



The purpose of this effort is to implement the [2006 Revised Forest Plan](#) and move the Forest toward the desired future conditions as laid out in the Plan. This approach takes the guess work out of planning and provides opportunities for aligning future projects with partners and stakeholders.

North Zone Order of Entry			
Year of Entry	Watershed Name	Lead District	Notable Features Within Watershed
2020	Upper Cheat River	Cheat-Potomac	Horseshoe Campground; Cheat River
2021	Deer Creek	Greenbrier	Ramshorn; Elleber Knob
2022	Upper South Branch-Lower North Fork Potomac River	Cheat-Potomac	Seneca Rocks; Seneca Shadows Campground; Smoke Hole Canyon; Big Bend Campground; Roaring Plains West Wilderness (partially); North Fork Mountain Trail
2023	Upper Shavers-Tygart Valley	Greenbrier	Stonecoal dispersed camping; Gaudineer Scenic Area; Cheat Summit Fort; Shavers Fork
2024	Haddix Run-Shavers Fork	Cheat-Potomac	Stuart Recreation Area and Campground; Bickle Knob; Bear Heaven Campground; Shaver’s Fork
2025	Upper Glady	Greenbrier	Laurel Fork North Wilderness; Laurel Fork South Wilderness; Laurel Fork Campground; West Fork Rail Trail (partially)

2026	Dry Fork East	Cheat-Potomac	Dolly Sods Wilderness; Roaring Plains West Wilderness (partially); Red Creek Campground, Seneca Creek Backcountry; Spruce Knob Lake; Spruce Knob Campground
2027	Upper Greenbrier River	Greenbrier	Camp Allegheny; Old House Run Picnic Area; Island Campground; Buffalo Lake; West Fork Rail Trail (partially)
2028	Upper North Fork Potomac	Cheat-Potomac	Spruce Knob; Seneca Creek
2029	Dry Fork West	Cheat-Potomac	Otter Creek Wilderness; Lower Gladys dispersed camping; Canaan Mountain Backcountry (partially)
2030	Blackwater River	Cheat-Potomac	Canaan Mountain Backcountry (partially); Blackwater Canyon; Dobbin House

Contacts		
Headquarters	Cheat-Potomac Ranger District	Greenbrier Ranger District
Forest Supervisor Shawn Cochran Deputy Forest Supervisor Ray Torres Supervisor's Office 200 Sycamore Street Elkins, WV 26241 304-636-1800 (Voice & TDD) https://www.fs.usda.gov/mnf/	District Ranger Jon Morgan Petersburg Office 2499 North Fork Highway Petersburg, WV 26847 304-257-4488 (Voice & TDD) Parsons Office 459 Nursery Bottom Parsons, WV 26287 304-478-3251 (Voice & TDD)	District Ranger Jack Tribble 7409 Staunton Parkersburg Turnpike Bartow, WV 24920 304-456-3335 (Voice & TDD)

More information on watershed boundaries can be found at <https://www.usgs.gov/core-science-systems/ngp/national-hydrography/>

Revised July 10, 2020



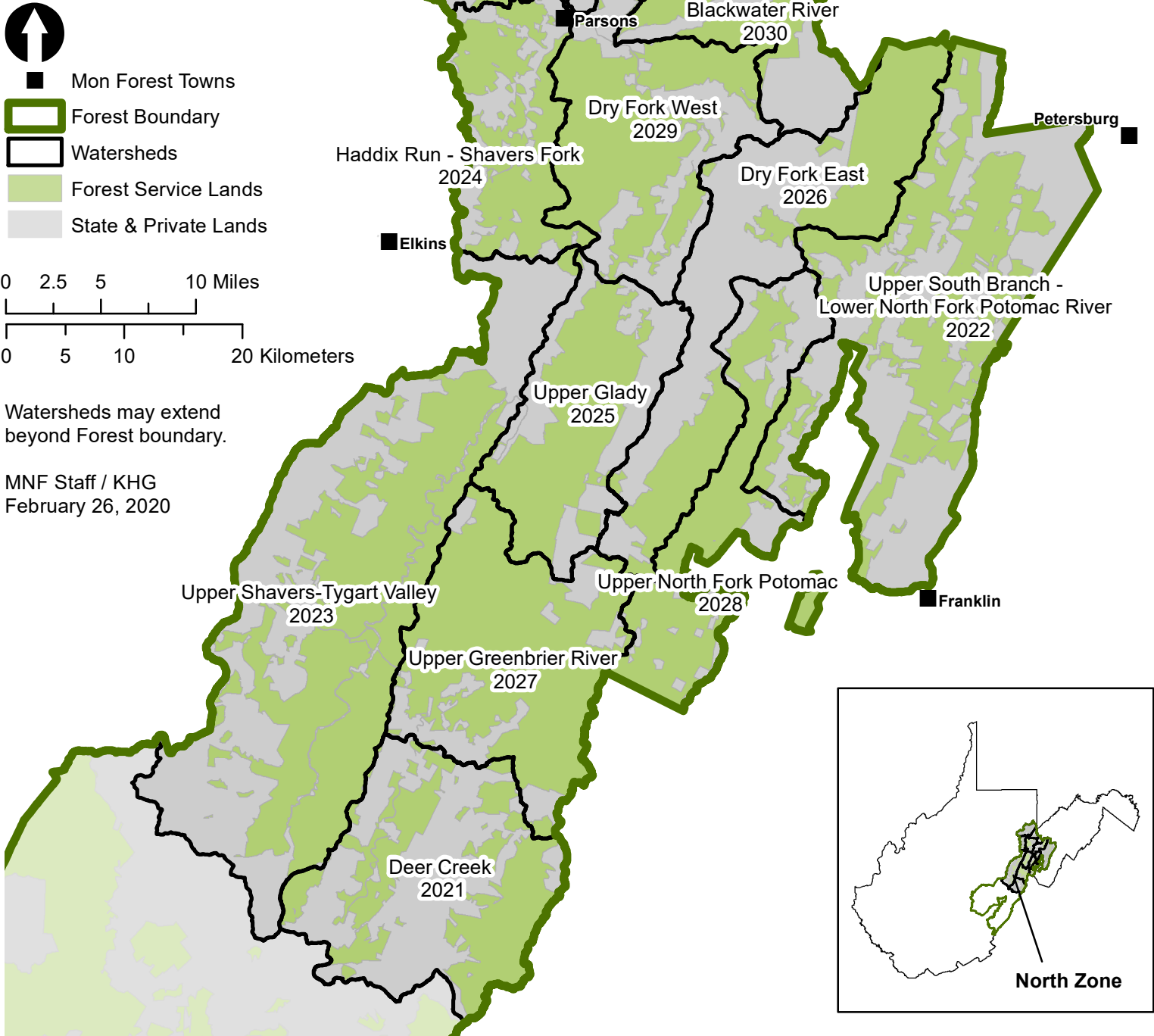
Forest Service

USDA is an equal opportunity provider, employer, and lender.



Monongahela National Forest

North Zone Watersheds Order of Entry



Watersheds may extend beyond Forest boundary.

MNF Staff / KHG
February 26, 2020

This map is intended to depict physical features as they generally appear on the ground and may not be used to determine title, ownership, legal boundaries, legal jurisdiction, including jurisdiction over roads or trails, or access restrictions that may be in place on either public or private land. Natural hazards may or may not be depicted on the map, and land users should exercise due caution. This map may not be suitable for navigation.

