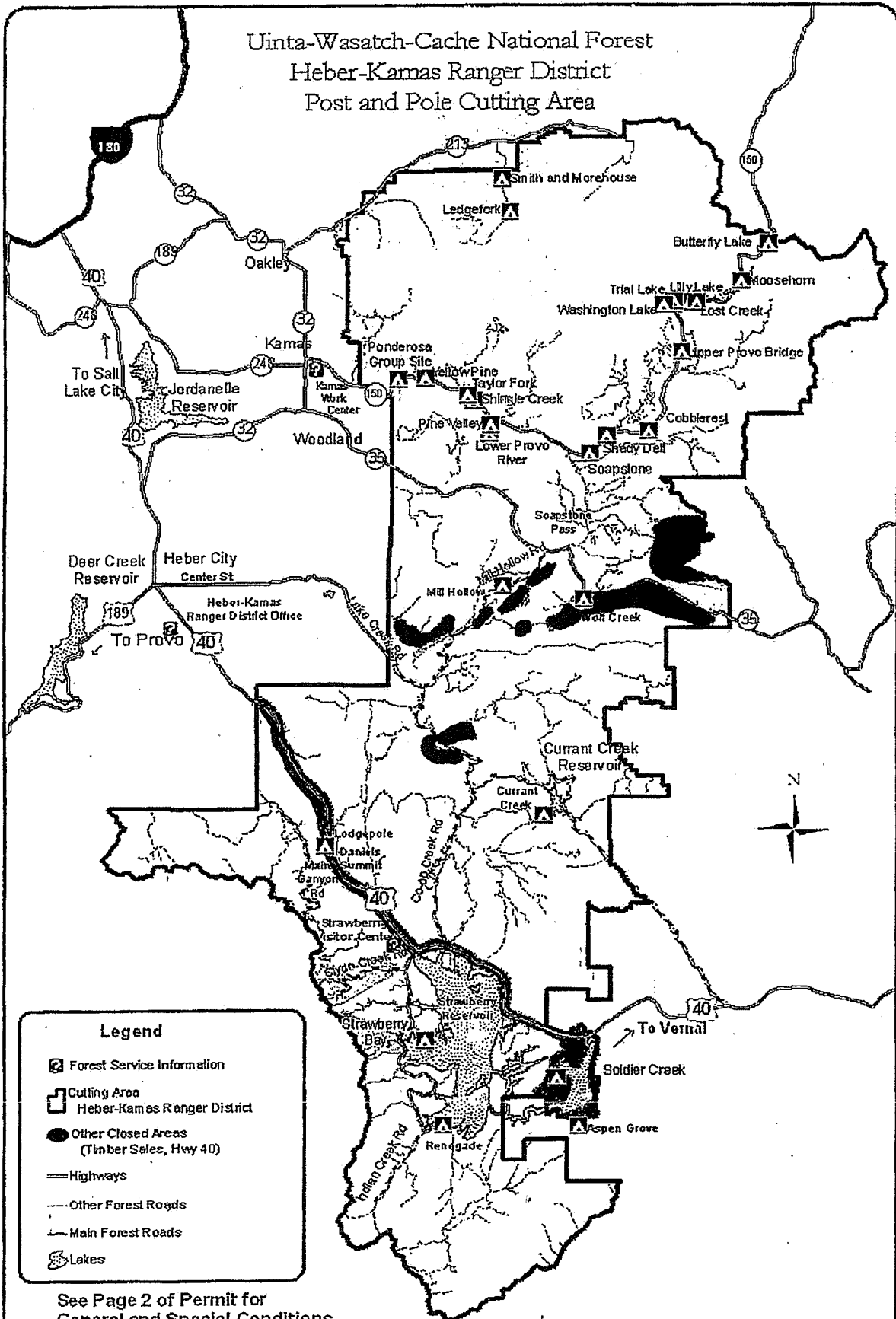


Uinta-Wasatch-Cache National Forest  
 Heber-Kamas Ranger District  
 Post and Pole Cutting Area



See Page 2 of Permit for  
 General and Special Conditions.

PLEASE NOTE: This map is for general reference only. It is YOUR RESPONSIBILITY to know where you are cutting. Closed areas may or may not be signed. Be sure to know where you are. If you have questions, or need a more detailed map please contact the Heber-Kamas Ranger District at 435-654-0470 or 435-783-4338.



CUTTING POSTS AND POLES  
Uinta-Wasatch-Cache National Forest  
Heber-Kamas Ranger District



Cutting Permitted

June 28 – November 20, 2021

Cutting Your Posts & Poles

Posts and Poles include spruce, fir, aspen, and lodgepole pine, but **MUST BE DEAD**. You may cut either standing or down trees.

Trees/pieces can be any length but must not be greater than 8 inches in diameter.

Rate per post/pole is \$1.00.

Stumps must be cut so that the top of the stump is less than 6 inches from the ground.

Permittee may drive a motorized vehicle up to 150 feet off of system roads to load post and poles if able to do so without creating resource damage.

Do not cut trees or gather wood within 300 feet of streams or lakes, or within developed campgrounds, trailheads or administrative sites.

The following areas are closed to post and pole gathering:

Commercial Timber Sale areas outlined on permit map.

**Purchasing Your Permit:**

Heber-Kamas Ranger District Offices

Heber Office: 2460 S. Hwy 40 Heber City, UT. 84032 (435)-654-0470

Office hours Tuesday & Thursday 8:00 – 4:30

Kamas Office: 50 E. Center St. Kamas, UT. 84036 (435)783-4338

Office hours Monday – Friday 8:00 – 4:30

(excluding Federal Holidays.)

The U.S. Department of Agriculture (USDA) prohibits discrimination in all its programs and activities on the basis of race, color, national origin, gender, religion, age, disability, political beliefs, sexual orientation, and marital or family status. (Not all prohibited bases apply to all programs.) Persons with disabilities who require alternative means for communication of program information (Braille, large print, audiotope, etc.) should contact USDA's TARGET Center at 202-720-2600 (voice and TDD).

To file a complaint of discrimination, write USDA, Director, Office of Civil Rights, Room 326-W, Whitten Building, 14<sup>th</sup> and Independence Avenue, SW, Washington, DC 20250-9410 or call (202) 720-5964 (voice or TDD). USDA is an equal opportunity provider and employer.

**Please Refrain from Wood Cutting and Loading When Wet Ground Conditions Are Such That Damage May Result.**