



Kootenai National Forest

Cabinet Ranger District

Big Eddy Trail #998

Clark Fork River Area (north side of the river)



(with restrictions)



(with restrictions)



(with restrictions)

OVERVIEW

Big Eddy Trail #998 leads to Star Peak Lookout. Star Peak is the location of the first recorded lookout site in Montana. The original rock house still sits below the current lookout which was built in 1910. Stunning views of the Scotchman Peaks Recommended Wilderness Area, Cabinet Mountains Wilderness, and the Clark Fork Valley can be seen from the peak. Star Gulch Trail #1016 and Pilick Ridge Trail #1036 depart from the peak offering loop hiking/horseback opportunities.

LENGTH OF TRAIL

4.72 miles one way

ELEVATION

Beginning: 2257' Ending: 6167' Net gain: 3910'

DIFFICULTY

More difficult

FACILITIES

There is a short access road leaving the highway that goes to the actual trailhead. However the road is very steep, narrow, and there is very limited parking and turning space at the end of the road. Most users park on the south side of Highway 200 in a large wide area and walk across the highway to the access road and trailhead.

DIRECTIONS

The trailhead is located at approximately milepost 6 on Highway 200.

TRAIL CONDITIONS

Big Eddy Trail #997 is a Trail Class 3 trail. The trail tread and corridor will be very well defined and visible. The trail is scheduled to be cleared every year. Please contact Cabinet Ranger Station for current trail conditions.

USGS MAP(S)

Heron #86

TRAILHEAD LAT/LONG

48.068 -115.925

STREAM CROSSINGS

No stream crossings.

RESTRICTIONS AND CONSIDERATIONS

Motorized use: Big Eddy Trail #998 is open to vehicles up to 50" or less in width to the end of the two track portion of the trail (2.5 mile mark).

Mechanized use: Big Eddy Trail #998 is open to mechanized use from the trailhead to the junction of Historic Big Eddy Trail #999 (2.8 mile mark).

Properly possess and store all food, refuse, and other attractants pursuant to Kootenai National Forest Food Storage Order (CFR 261.58 (cc)).

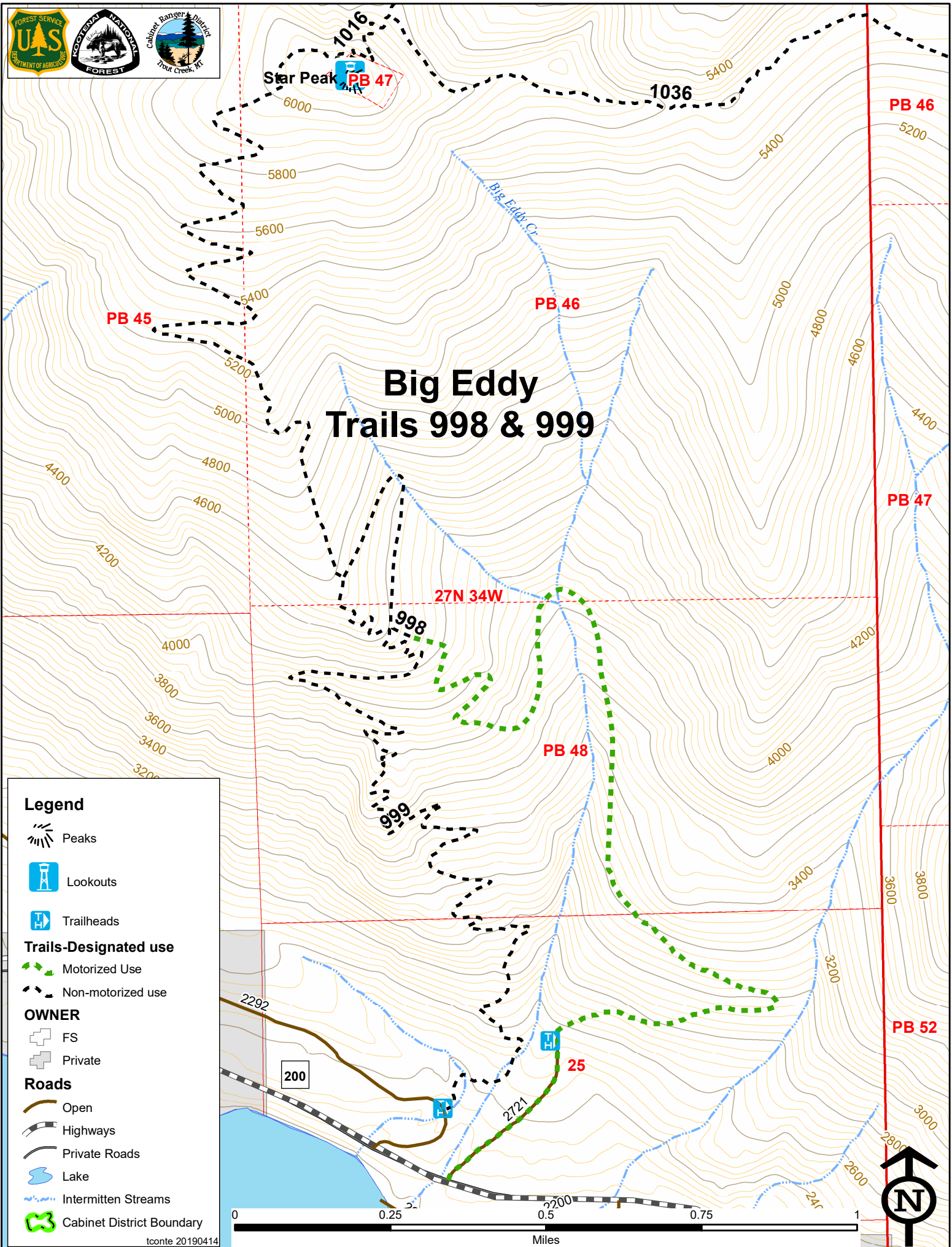
Please practice *Pack-in-Pack-out* and *Leave-No-Trace* ethics.



Kootenai National Forest, Cabinet Ranger District

2693 Highway 200, Trout Creek, MT 59874 / (406) 827-3533 / (406) 827-0718 fax / www.fs.fed.us/r1/kootenai

The U.S. Department of Agriculture (USDA) prohibits discrimination in its programs on the basis of race, color, national origin, sex, religion, age, disability, political beliefs, and marital or familial status. (Not all prohibited bases apply to all programs.) Persons with disabilities who require alternative means of communication (braille, large print, audiotape, etc.) should contact USDA's TARGET Center at (202) 720-2600 (voice and TDD). To file a complaint, write the Secretary of Agriculture, U.S. Department of Agriculture, Washington, DC 20250, or call 1-800-245-6340 (voice) or (202) 720-1127 (TDD). USDA is an equal opportunity employer.



Legend



Peaks



Lookouts

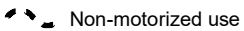


Trailheads

Trails-Designated use



Motorized Use



Non-motorized use

OWNER



FS



Private

Roads



Open



Highways



Private Roads



Lake



Intermittent Streams



Cabinet District Boundary