

Seasonal and Special Vehicle Designations

Route Numbers	Legend	Description	Dates Allowed	Beginning Mile Post	Ending Mile Post
565	[Symbol]	Roads Open to All Vehicles, with Seasonal Designation	July 1 - March 31	Entire	Length
300.T, 300.U, 348, 502, 502.B, 503, 563	[Symbol]	Roads Open to All Vehicles	April 2 - November 30	Entire	Length
	[Symbol]	Roads Open Only to Vehicles 50' or Less in Width	December 1 - April 1	Entire	Length
300, 300.O, 300.P, 300.PA, 300.Q, 300.R, 300.S, 502.Z, 507	[Symbol]	Roads Open to Highway Legal Vehicles	April 2 - November 30	Entire	Length
	[Symbol]	Roads Open Only to Vehicles 50' or Less in Width	December 1 - April 1	Entire	Length

South Platte Ranger District Motor Vehicle Travel Map

SOUTH PLATTE RANGER DISTRICT BLANKET STATEMENTS FOR TRAVEL MANAGEMENT

Map Revisions
The designations shown on this map will remain in effect until revised with the publication of a new map. In January of each year, this motor vehicle use map will either be revised with the publication of a new map, or it will be validated for the new year by the Ranger District with a red stamp that says "Valid for Year 20__".

Parking/Dispersed Camping On The Pike National Forest

- Where designated parking areas are not available, and where not specifically prohibited, unsafe, or causing resource damage, parking on National Forest System lands within one vehicle length off of designated routes is authorized.
- Dispersed camping is authorized on National Forest System lands except in specially designated areas that are closed to camping.
- Motorized dispersed camping is authorized within one vehicle length off of designated National Forest System routes, where not specifically prohibited, unsafe, or causing resource damage.
- Check with the local National Forest District office for current information on areas closed to camping and for other travel management information.

Temporary Closures

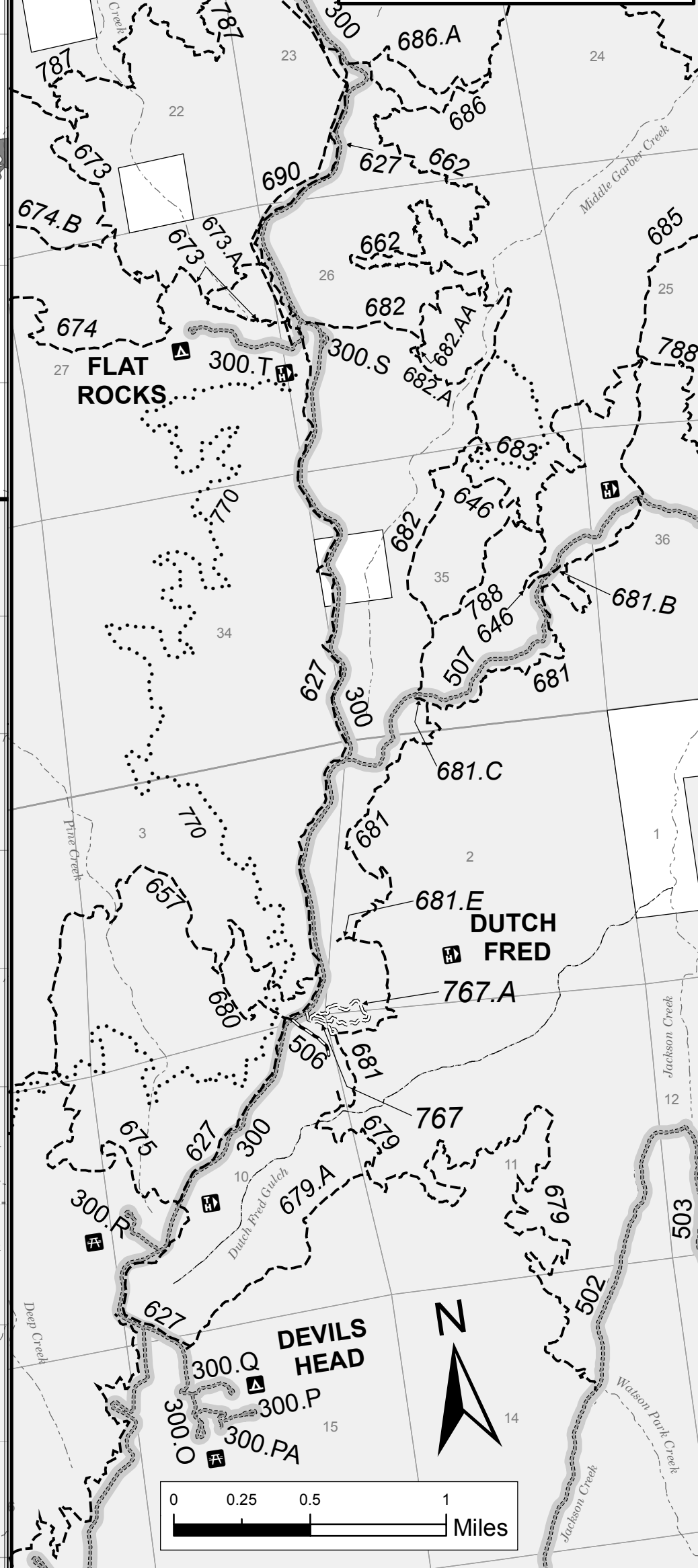
- Check with www.fs.usda.gov/pic, Alerts and Notices tab, for current temporary closures and prohibitions.
- See Forest Order PSICC-2017-11 for camping and/or parking restrictions on and within 1/4 mile of National Forest System roads in the South Platte Ranger District. This Order only allows camping and/or parking in the Restricted Area where posted with these symbols: [Symbol] [Symbol]

Campground Information

- Most South Platte Ranger District developed recreations sites and access roads are closed during the winter months.
- Visit www.fs.usda.gov/goto/piccc/loop, and then click on the Recreation tab, then on the camping & cabins tab, for detailed information on each campground, including the estimated opening and closing dates.

MVTM Disclaimer
Disclaimer: GIS data and product accuracy may vary. The Forest Service reserves the right to correct, update, modify, or replace GIS products without notification. For more information, contact the Pike and San Isabel NF, Cimarron & Comanche NG, Pueblo, CO. (719) 553-1400.

Rampart Range Road Inset



SHORT ROUTE TABLE

Route Number	Route Designation	Length in Feet	Length in Miles
108.B	Roads Open to Highway Legal Vehicles, Yearlong	475	0.09
109.B	Roads Open to Highway Legal Vehicles, Yearlong	528	0.10
119.A	Roads Open to All Vehicles, Yearlong	528	0.10
120.2A	Roads Open to All Vehicles, Yearlong	528	0.10
211.0	Roads Open to Highway Legal Vehicles, Yearlong	422	0.08
300.M	Roads Open to Highway Legal Vehicles, Yearlong	264	0.05
300.PA	Special Designation, Seasonal	143	0.03
300.S	Special Designation, Seasonal	528	0.10
300.U	Special Designation, Seasonal	317	0.06
360.B	Roads Open to All Vehicles, Yearlong	528	0.10
528.B	Roads Open to All Vehicles, Yearlong	528	0.10
533.B	Roads Open to Highway Legal Vehicles, Yearlong	528	0.10
533.C	Roads Open to Highway Legal Vehicles, Yearlong	528	0.10
533.D	Roads Open to Highway Legal Vehicles, Yearlong	528	0.10
533.E	Roads Open to Highway Legal Vehicles, Yearlong	264	0.05
533.F	Roads Open to Highway Legal Vehicles, Yearlong	264	0.05
533.G	Roads Open to Highway Legal Vehicles, Yearlong	528	0.10
533.I	Roads Open to Highway Legal Vehicles, Yearlong	264	0.05
533.J	Roads Open to Highway Legal Vehicles, Yearlong	528	0.10
533.K	Roads Open to Highway Legal Vehicles, Yearlong	528	0.10
549.1A	Roads Open to All Vehicles, Yearlong	158	0.03

LEGEND

- Roads Open to Highway Legal Vehicles
- Roads Open to All Vehicles
- Roads with Special Vehicle Designation
- Trails Open to All Vehicles
- Trails Open to Vehicles 50' or Less in Width
- Trails Open to Motorcycles Only
- Seasonal Designation (See Table)
- Interstate Highways, U.S. State, County & Other Public Roads
- Interstate Route Number
- U.S. Highway Route Number
- State Highway Route Number
- County Road Number
- Short Route Identifier (See Short Route Table)
- Major Streams
- Mountain Peaks
- FS Campground
- Picnic Area
- Motorized Trailhead
- Cities, Towns
- Forest or Unit Boundary
- National Forest System Lands
- Non-National Forest System Lands within the National Forest
- Wilderness Areas
- County Boundary
- Township and Range Lines
- Section Lines
- Lakes
- State Wildlife Areas (SWA)
- State Park Boundaries
- BLM Lands