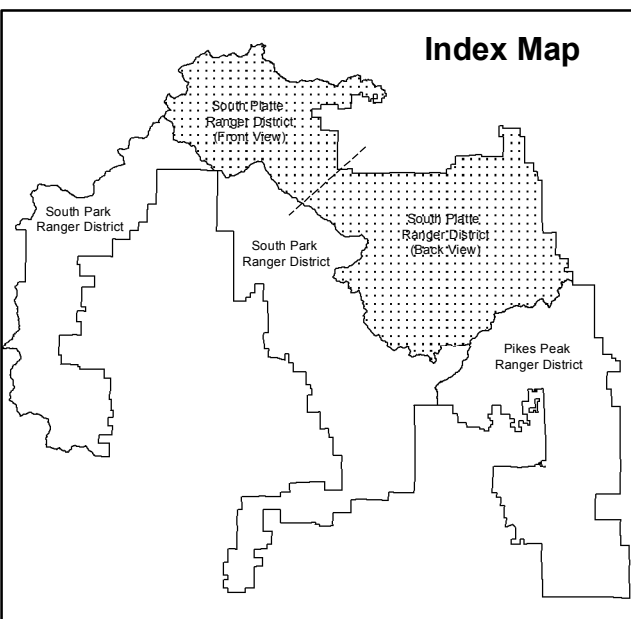
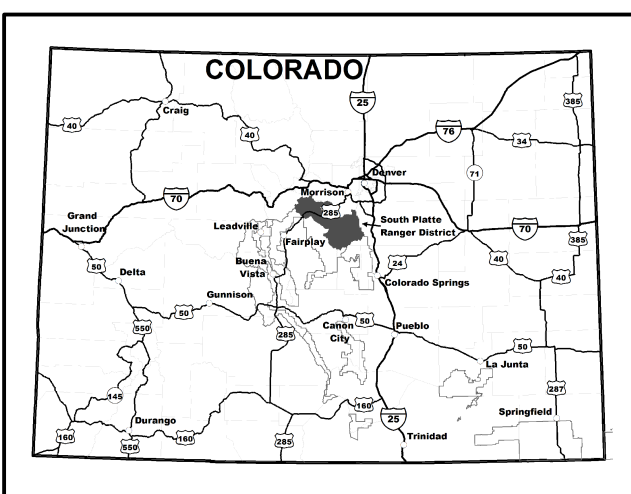


Motor Vehicle Use Map Pike National Forest South Plate Ranger District

VICINITY MAP



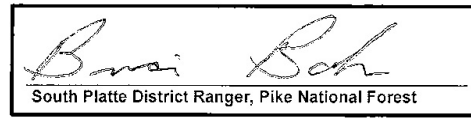
INFORMATION SOURCES

South Plate Ranger District
30403 Kings Valley DR. STE. 2-115
Conifer, CO 80433
(303) 275-5610
Forest Supervisor
Pike and San Isabel National Forests
Cimarron and Comanche National Grasslands
2840 Kachina Drive
Pueblo, CO 81008
(719) 553-1400
In case of emergency, Dial 911
South Plate Ranger District Website:
http://www.fs.usda.gov/goto/psrco/sopl



PURPOSE AND CONTENTS OF THIS MAP

The designations shown on this motor vehicle use map (MVUM) were made by the responsible official pursuant to 36 CFR 212.51; are effective as of the date on the front cover of this MVUM, and will remain in effect until superseded by the next year's MVUM.



It is the responsibility of the user to acquire the current MVUM. This MVUM shows the National Forest System roads, National Forest System trails, and the areas on National Forest System lands in the South Plate Ranger District that are designated for motor vehicle use pursuant to 36 CFR 212.51. This MVUM also identifies the vehicle classes allowed on each route and in each area, and any seasonal restrictions that apply on those routes and in those areas.

Designation of a road, trail, or area for motor vehicle use by a particular class of vehicle under 36 CFR 212.51 should not be interpreted as encouraging or inviting use, or implying that the road, trail or area is passable, actively maintained, or safe for travel. Motor vehicle designations include parking along designated routes and at facilities associated with designated routes when it is safe to do so and when not causing damage to National Forest System resources.

Seasonal weather conditions and natural events may render designated roads and trails impassable for extended periods. Designated areas may contain dangerous or impassable terrain. Many designated roads and trails may be passable only by high-clearance vehicles or four-wheel drive vehicles. Maintenance of designated roads and trails will depend on available resources, and many may receive little maintenance.

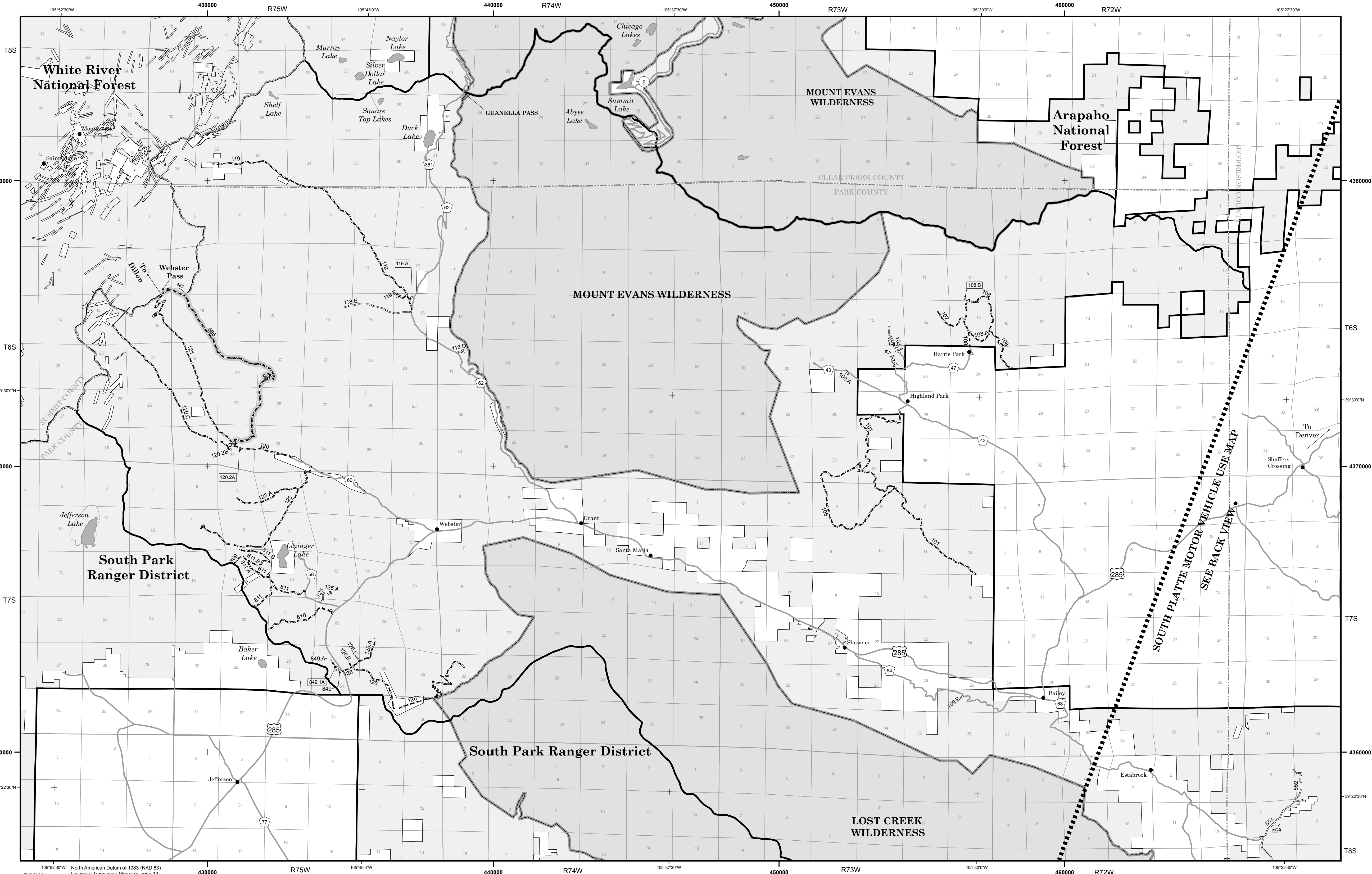
This motor vehicle use map identifies those roads, trails, and areas designated for motor vehicle use under 36 CFR 212.51 for the purpose of enforcing the prohibition at 36 CFR 261.13. This is a limited purpose. The other public roads are shown for information and navigation purposes only and are not subject to designation under the Forest Service travel management regulation.

These designations apply only to National Forest System roads, National Forest System trails, and areas on National Forest System lands.

LEGEND

- Roads Open to Highway Legal Vehicles
Roads Open to All Vehicles
Roads with Special Vehicle Designation
Trails open to All Vehicles
Trails Open to Vehicles 50" or Less in Width
Trails Open to Motorcycles Only
Seasonal Designation (See Table)
Interstate Highways, U.S. State, County & Other Public Roads
Interstate Route Number
U.S. Highway Route Number
State Highway Route Number
County Road Number
Short Route Identifier (See Short Route Table)
Cities, Towns
Forest and District Boundary
National Forest System Lands
Non-National Forest System Lands within the National Forest
Wilderness Areas
County Boundary
Township and Range Lines
Section Lines
Lakes

1:70,000
Scale bar showing 0, 0.5, 1, 2, 3 miles.



In accordance with Federal civil rights law and U.S. Department of Agriculture (USDA) civil rights regulations and policies, the USDA, its Agencies, offices, and employees, and institutions participating in or administering USDA programs are prohibited from discriminating based on race, color, national origin, religion, sex, gender identity (including gender expression), sexual orientation, disability, age, marital status, family/parental status, income derived from a public assistance program, political beliefs, or reprisal or retaliation for prior civil rights activity, in any program or activity conducted or funded by USDA (not all bases apply to all programs). Remedies and complaint filing deadlines vary by program or incident.

Persons with disabilities who require alternative means for communication for program information (e.g., Braille, large print, audiotape, American Sign Language, etc.) should contact the responsible Agency or USDA's TARGET Center at (202) 720-2600 (voice and TTY) or contact USDA through the Federal Relay Service at (800) 877-8339. Additionally, program information may be made available in languages other than English.

To file a program discrimination complaint, complete the USDA Program Discrimination Complaint Form, AD-3027, found online at http://www.ascr.usda.gov/complaint_filing_cust.html and at any USDA office or write a letter addressed to USDA and provide in the letter all the information requested in the form. To request a copy of the complaint form, call (866) 632-9992. Submit your completed form or letter to USDA by: (1) mail: U.S. Department of Agriculture, Office of the Assistant Secretary for Civil Rights, 1400 Independence Avenue, S.W., Washington, D.C. 20250-9410; (2) fax: (202) 690-7442; (3) email: program.intake@usda.gov.

USDA is an equal opportunity provider, employer, and lender.

OPERATOR RESPONSIBILITIES

Operating a motor vehicle on National Forest System roads, National Forest System trails, and in areas on National Forest System lands carries a greater responsibility than operating that vehicle in a city or other developed setting. Not only must you know and follow all applicable traffic laws, you need to show concern for the environment as well as other forest users. The misuse of motor vehicles can lead to the temporary or permanent closure of any designated road, trail, or area. As a motor vehicle operator, you are also subject to State traffic law, including State requirements for licensing, registration, and operation of the vehicle in question.

Motor vehicle use, especially off-highway vehicle use, involves inherent risks that may cause property damage, serious injury, and possibly death to participants. Drive cautiously and anticipate rough surfaces and features, such as snow, mud, vegetation, and water crossings common to remote driving conditions. By your participation, you voluntarily assume full responsibility for these damages, risks, and dangers. Take care at all times to protect yourself and those under your responsibility.

Much of the South Plate Ranger District is remote. Medical assistance may not be readily available. Cellular telephones do not work in many areas of the South Plate Ranger District. Take adequate food, water, first aid supplies, and other equipment appropriate for the conditions and expected weather.

ALWAYS REMEMBER TO RESPECT PRIVATE LAND! PROTECT YOUR PRIVILEGE. STAY ON DESIGNATED ROADS AND TRAILS AND IN DESIGNATED AREAS.

Read and understand this map in its entirety. If you have questions, please contact the South Plate Ranger District for clarification. As a motor vehicle operator on a National Forest System road, trail, or area, you must comply with this map, as well as all Federal, State, and local laws and regulations. Compliance with these rules is your responsibility.

EXPLANATION OF LEGEND ITEMS

Roads Open to Highway Legal Vehicles Only: Roads open only to motor vehicles licensed under State law for general operation on all public roads.

Roads Open to All Vehicles: Roads open to all motor vehicles, including smaller off highway vehicles that may not be licensed for highway use (not to oversize or overweight vehicles under State traffic law).

Trails Open to All Vehicles: Trails open to all motor vehicles, including both highway legal and nonhighway legal vehicles.

Trails Open to Vehicles 50" or Less in Width: Trails open only to motor vehicles less than 50 inches in width at the widest point on the vehicle.

Trails Open to Motorcycles Only: Trails open only to motorcycles. Sidecars are not permitted.

Special Vehicle Designation: This symbol indicates the road or trail is open to classes of vehicles other than those listed above. Refer to the Seasonal and Special Vehicle Designations Table for further instructions.

Seasonal Designation: This symbol, used in conjunction with one of the other road or trail symbols, indicates that the route is open only during certain portions of the year. Refer to the Seasonal and Special Vehicle Designations Table for further instructions.

Other Public Roads and Trails: Interstate Highways, U.S., State, County & Other Public Roads

Used to show routes not designated for motorized use by the Forest Service. Part of the reference layers showing connections to towns and cities outside the forest boundary.

Short Route Identifier: 622

This symbol is used for routes that are too short to show a symbol type on the map. The symbol contains the number of the road or trail. Users should refer to the corresponding number in the Short Route Table for designation information.

Seasonal and Special Vehicle Designations

Table with columns: Route Numbers, Unetype, Legend, Description, Dates Allowed, Beginning Mile Post, Ending Mile Post. Lists various routes and their seasonal restrictions.

SOUTH PLATTE RANGER DISTRICT BLANKET STATEMENTS FOR TRAVEL MANAGEMENT

Map Revisions

The designations shown on this map will remain in effect until revised with the publication of a new map. In January of each year, this motor vehicle use map will either be revised with the publication of a new map, or it will be validated for the new year by the Ranger District with a red stamp that says: "Valid for Year 20__"

Parking/Dispersed Camping On The Pike National Forest

- Where designated parking areas are not available, and where not specifically prohibited, unsafe, or causing resource damage, parking on National Forest System lands within one vehicle length off of designated routes is authorized.
Dispersed camping is authorized on National Forest System lands except in specially designated areas that are closed to camping.
Motorized dispersed camping is authorized within one vehicle length off of designated National Forest System routes, where not specifically prohibited, unsafe, or causing resource damage.

- Check with the local National Forest District office for current information on areas closed to camping and for other travel management information.

SHORT ROUTE TABLE

Table with columns: Route Number, Route Designation, Length in Feet, Length in Miles. Lists short routes and their characteristics.