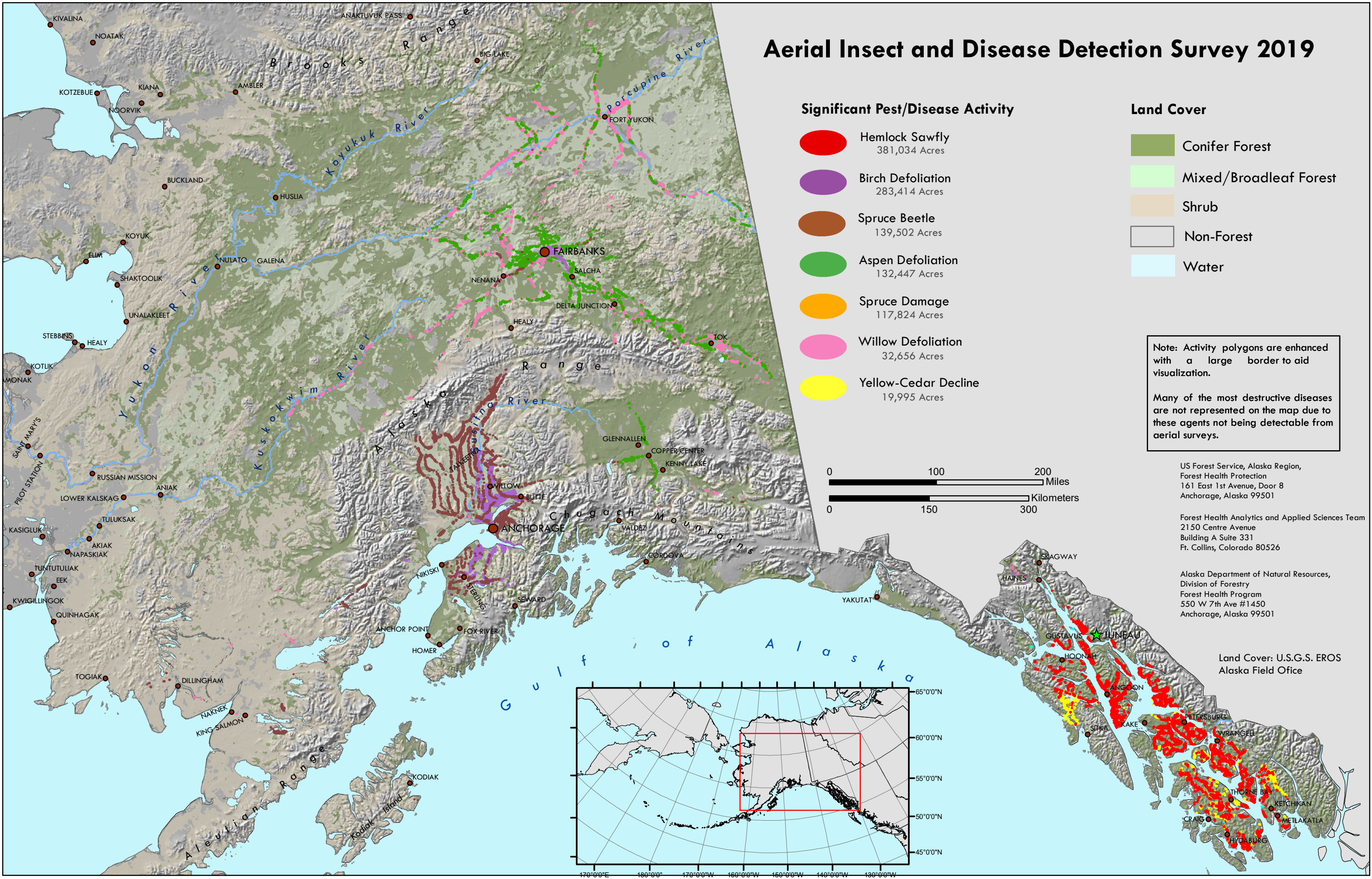


# Aerial Insect and Disease Detection Survey 2019



### Significant Pest/Disease Activity

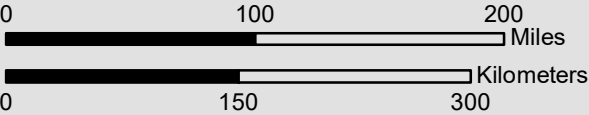
- Hemlock Sawfly  
381,034 Acres
- Birch Defoliation  
283,414 Acres
- Spruce Beetle  
139,502 Acres
- Aspen Defoliation  
132,447 Acres
- Spruce Damage  
117,824 Acres
- Willow Defoliation  
32,656 Acres
- Yellow-Cedar Decline  
19,995 Acres

### Land Cover

- Conifer Forest
- Mixed/Broadleaf Forest
- Shrub
- Non-Forest
- Water

Note: Activity polygons are enhanced with a large border to aid visualization.

Many of the most destructive diseases are not represented on the map due to these agents not being detectable from aerial surveys.

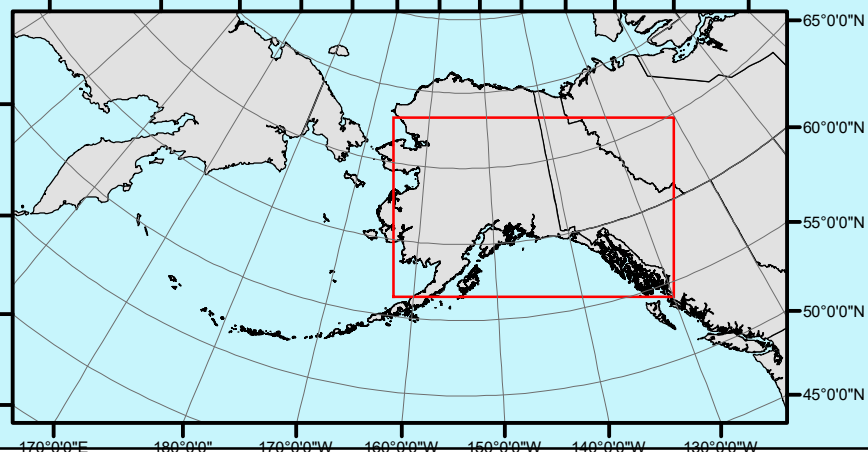


US Forest Service, Alaska Region,  
Forest Health Protection  
161 East 1st Avenue, Door 8  
Anchorage, Alaska 99501

Forest Health Analytics and Applied Sciences Team  
2150 Centre Avenue  
Building A Suite 331  
Ft. Collins, Colorado 80526

Alaska Department of Natural Resources,  
Division of Forestry  
Forest Health Program  
550 W 7th Ave #1450  
Anchorage, Alaska 99501

Land Cover: U.S.G.S. EROS  
Alaska Field Office





# Aerial Detection Survey Flight Paths 2019

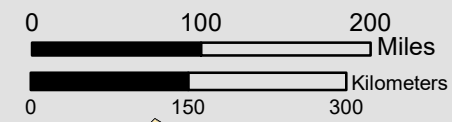
 Surveied Area

## Management Agency

## Surveied Acres

	State of Alaska	7,771,600
	US Forest Service	4,136,200
	Native	3,644,200
	Local Government and Private	3,054,500
	National Park Service	2,421,500
	US Fish and Wildlife Service	1,718,900
	Bureau of Land Management	846,250
	Department of Defense	368,600
	Wild and Scenic River	148,350

Total Acres Surveied 24,420,700



US Forest Service, Alaska Region,  
Forest Health Protection  
161 East 1st Avenue, Door 8  
Anchorage, Alaska 99501

Forest Health Analytics and Applied Sciences Team  
2150 Centre Avenue  
Building A Suite 331  
Ft. Collins, Colorado 80526

Alaska Department of Natural Resources,  
Division of Forestry  
Forest Health Program  
550 W 7th Ave #1450  
Anchorage, Alaska 99501

