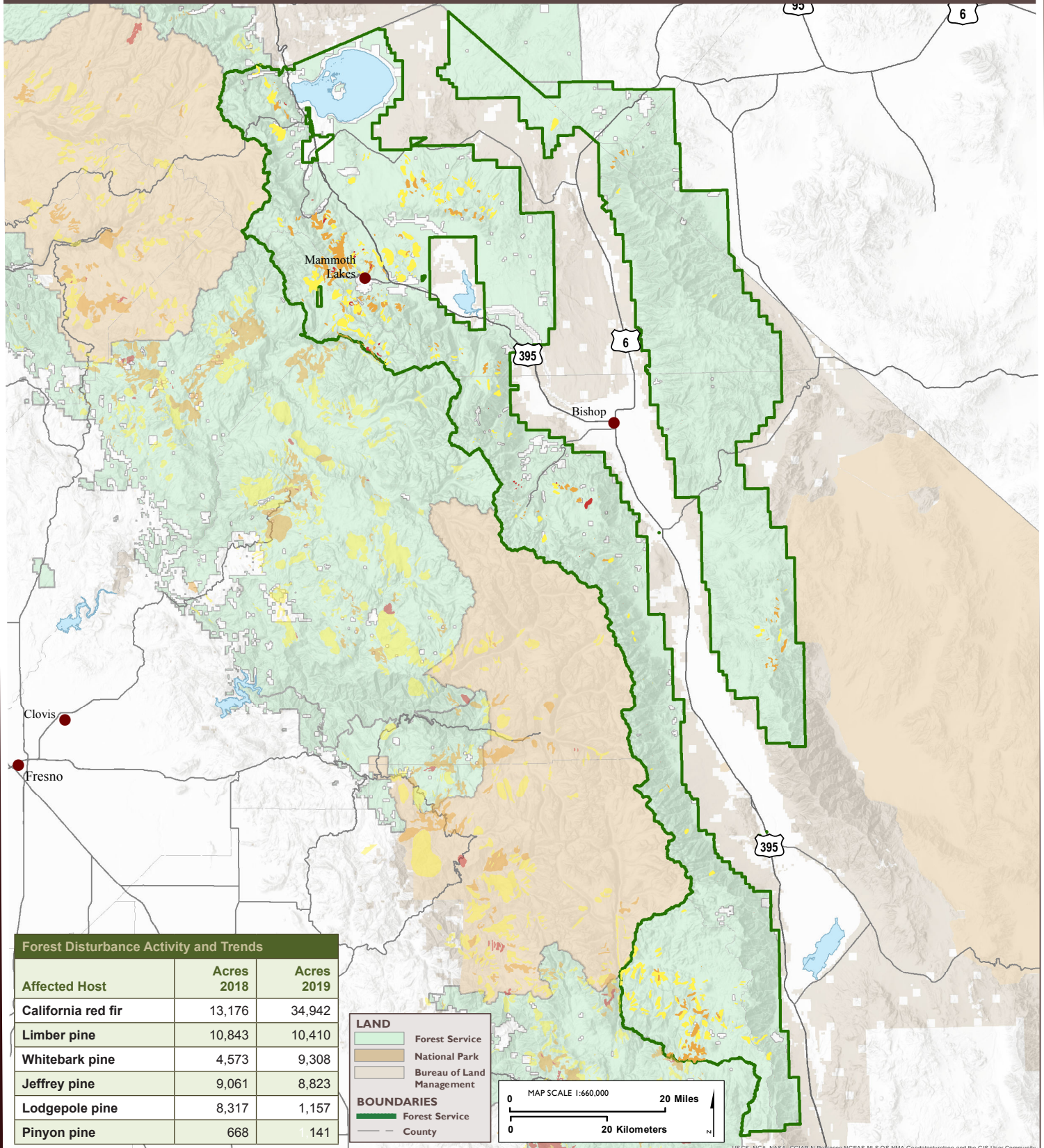




UNITED STATES DEPARTMENT OF AGRICULTURE

# AERIAL DETECTION SURVEY, 2019 INYO NATIONAL FOREST



### Forest Disturbance Activity and Trends

| Affected Host      | Acres 2018 | Acres 2019 |
|--------------------|------------|------------|
| California red fir | 13,176     | 34,942     |
| Limber pine        | 10,843     | 10,410     |
| Whitebark pine     | 4,573      | 9,308      |
| Jeffrey pine       | 9,061      | 8,823      |
| Lodgepole pine     | 8,317      | 1,157      |
| Pinyon pine        | 668        | 141        |

**LAND**

- Forest Service
- National Park
- Bureau of Land Management

**BOUNDARIES**

- Forest Service
- County

MAP SCALE 1:660,000

0 20 Miles

0 20 Kilometers

N



### TREE MORTALITY

Dead Trees per Acre



USGS, NGA, NASA, CGIAR, Robinson, NCEAS, NLS, OS, NMA, Geodatasystem and the GIS User Community