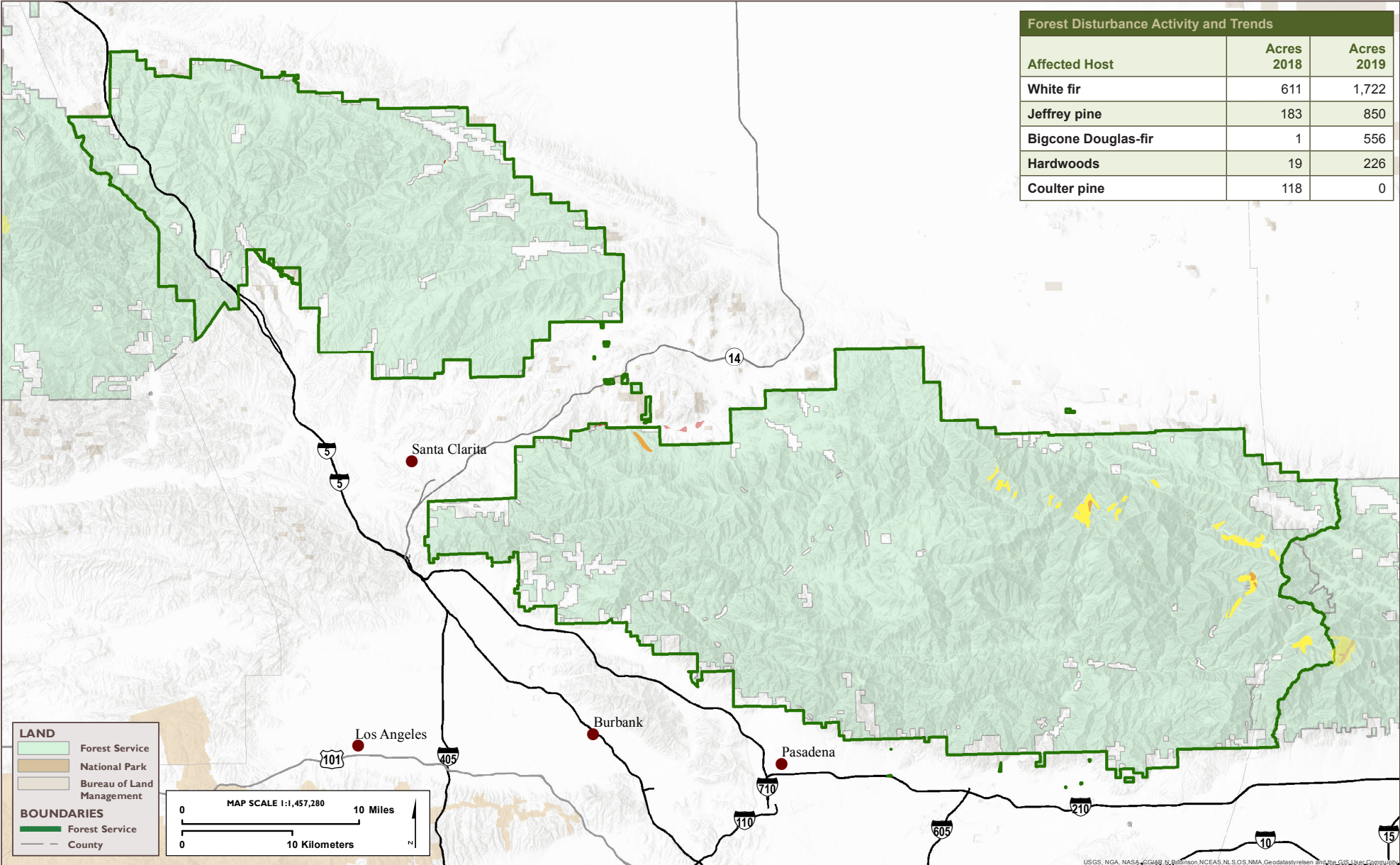




UNITED STATES DEPARTMENT OF AGRICULTURE

# AERIAL DETECTION SURVEY, 2019 ANGELES NATIONAL FOREST

Forest Disturbance Activity and Trends		
Affected Host	Acres 2018	Acres 2019
White fir	611	1,722
Jeffrey pine	183	850
Bigcone Douglas-fir	1	556
Hardwoods	19	226
Coulter pine	118	0



**LAND**

- Forest Service
- National Park
- Bureau of Land Management

**BOUNDARIES**

- Forest Service
- County

MAP SCALE 1:1,457,280

0 10 Miles

0 10 Kilometers



**TREE MORTALITY**  
Dead Trees per Acre

- Less than 5
- 5 - 10
- 10 - 15
- 15 - 20
- 20 - 35
- More than 35

USGS, NGA, NASA, CGIAR, Robinson, NCEAS, NLS, OS, NMA, Geodatastyretsen and the GIS User Community