

# Northern Black Hills Black Hills National Forest Recreation Trail Map Motorized and Non-Motorized January 2022

Motorized travel on National Forest System lands is restricted to designated roads and trails. Driving or riding off designated roads and trails is prohibited. The legal document which identifies those roads and trails that are designated for motor vehicle use is the Motor Vehicle Use Map (MVUM). The MVUM is published annually and may establish travel regulations that differ from those in this map. It is the responsibility of the user to acquire the current MVUM. Contact your local Forest Service office for a free MVUM or visit their Forest Service MVUM webpage.

**INFORMATION SOURCES**

Black Hills National Forest Headquarters  
1019 N. 5th Street, Custer, SD 57730  
Phone: (605) 673-9200

Bear Lodge Ranger District  
PO Box 680  
101 S. 21st Street  
Sundance, WY 82729  
Phone: (307) 283-1361

Mystic Ranger District  
8221 S. Mount Rushmore Road  
Rapid City, SD 57702  
Phone: (605) 343-1567

Northern Hills Ranger District  
2014 N. Main Street  
Spearfish, SD 57783  
Phone: (605) 642-4622

Hell Canyon Ranger District  
1019 N. 5th Street  
Custer, SD 57730  
Phone: (605) 673-9200  
and  
1225 Washington Blvd  
Newcastle, WY 82701  
Phone: (307) 746-2702

Black Hills National Forest  
Website:  
[www.fs.usda.gov/blackhills](http://www.fs.usda.gov/blackhills)  
In Case of Emergency,  
Dial 911

**Legend**

- Forest Boundary
- District Boundary
- Black Hills National Forest Land
- Bureau of Land Management
- State Land

**Non-Motorized Trails**

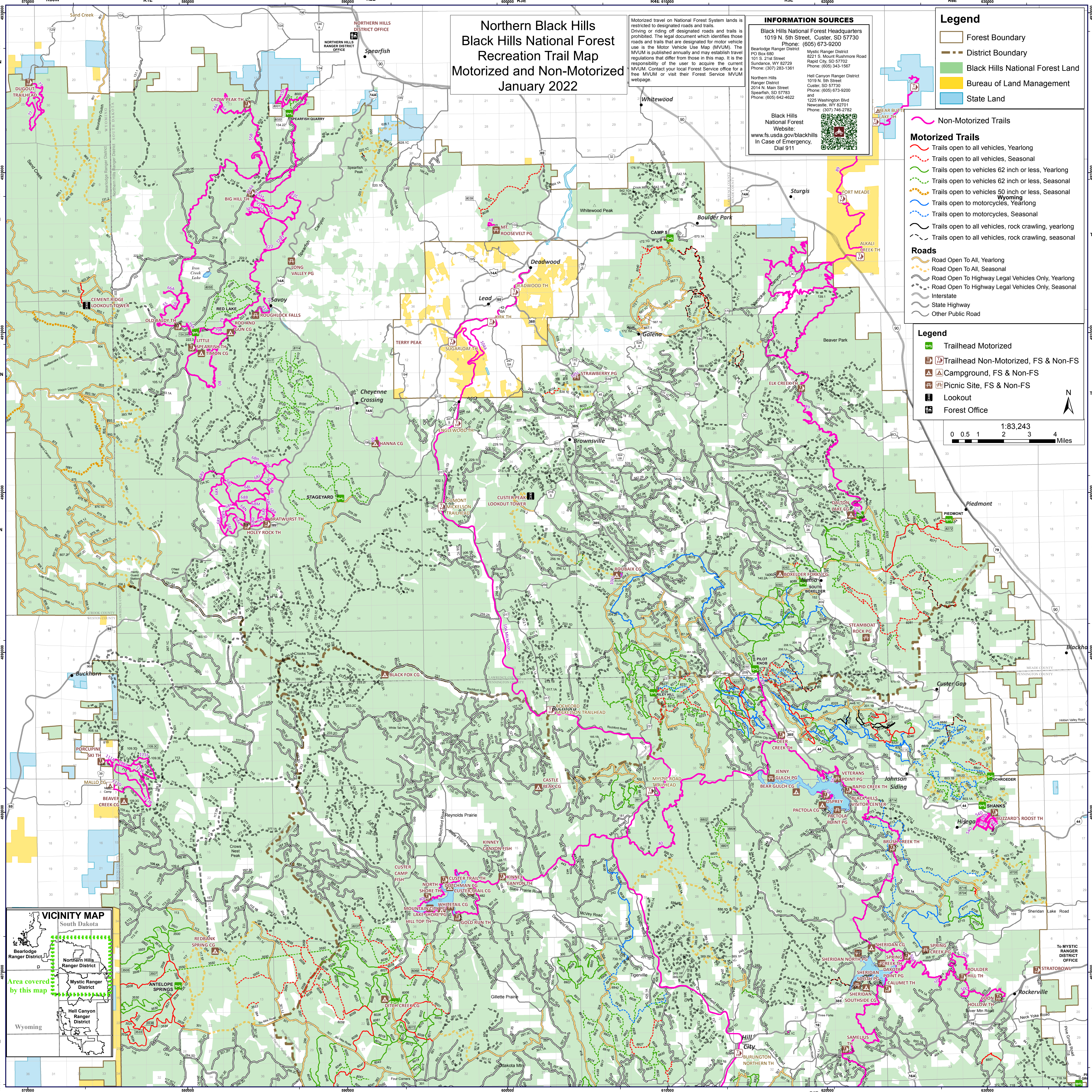
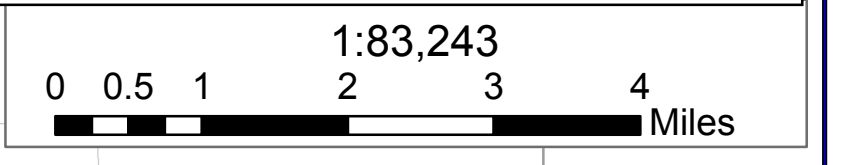
- Trails open to all vehicles, Yearlong
- Trails open to all vehicles, Seasonal
- Trails open to vehicles 62 inch or less, Yearlong
- Trails open to vehicles 62 inch or less, Seasonal
- Trails open to vehicles 50 inch or less, Seasonal
- Trails open to motorcycles, Yearlong
- Trails open to motorcycles, Seasonal
- Trails open to all vehicles, rock crawling, yearlong
- Trails open to all vehicles, rock crawling, seasonal

**Roads**

- Road Open To All, Yearlong
- Road Open To All, Seasonal
- Road Open To Highway Legal Vehicles Only, Yearlong
- Road Open To Highway Legal Vehicles Only, Seasonal
- Interstate
- State Highway
- Other Public Road

**Legend**

- Trailhead Motorized
- Trailhead Non-Motorized, FS & Non-FS
- Campground, FS & Non-FS
- Picnic Site, FS & Non-FS
- Lookout
- Forest Office



**VICINITY MAP**  
South Dakota

Area covered by this map

Wyoming