

82°35'0"W

82°30'0"W

82°25'0"W

82°20'0"W

82°15'0"W

30°35'0"N

30°30'0"N

30°25'0"N

30°20'0"N

30°15'0"N

30°35'0"N

30°30'0"N

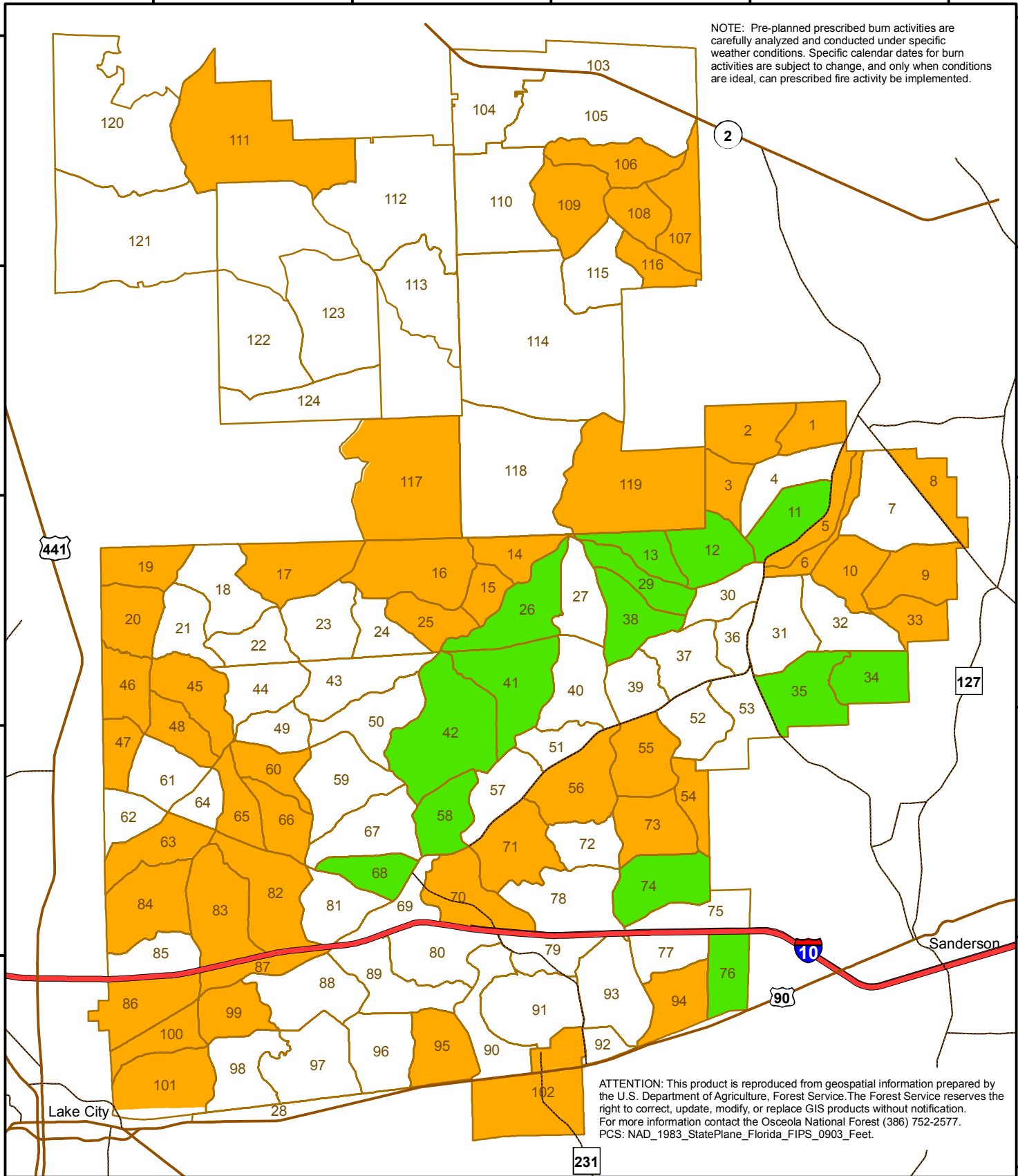
30°25'0"N

30°20'0"N

30°15'0"N

30°10'0"N

NOTE: Pre-planned prescribed burn activities are carefully analyzed and conducted under specific weather conditions. Specific calendar dates for burn activities are subject to change, and only when conditions are ideal, can prescribed fire activity be implemented.

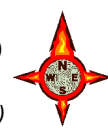


ATTENTION: This product is reproduced from geospatial information prepared by the U.S. Department of Agriculture, Forest Service. The Forest Service reserves the right to correct, update, modify, or replace GIS products without notification. For more information contact the Osceola National Forest (386) 752-2577. PCS: NAD_1983_StatePlane_Florida_FIPS_0903_Feet.

Osceola National Forest FY 2018 Prescribed Fire Burn Map



-  Compartment
-  Growing Season (14k acres)
March 16 - September 30
-  Dormant Season (49k acres)
October 1 - March 15



1:210,000

