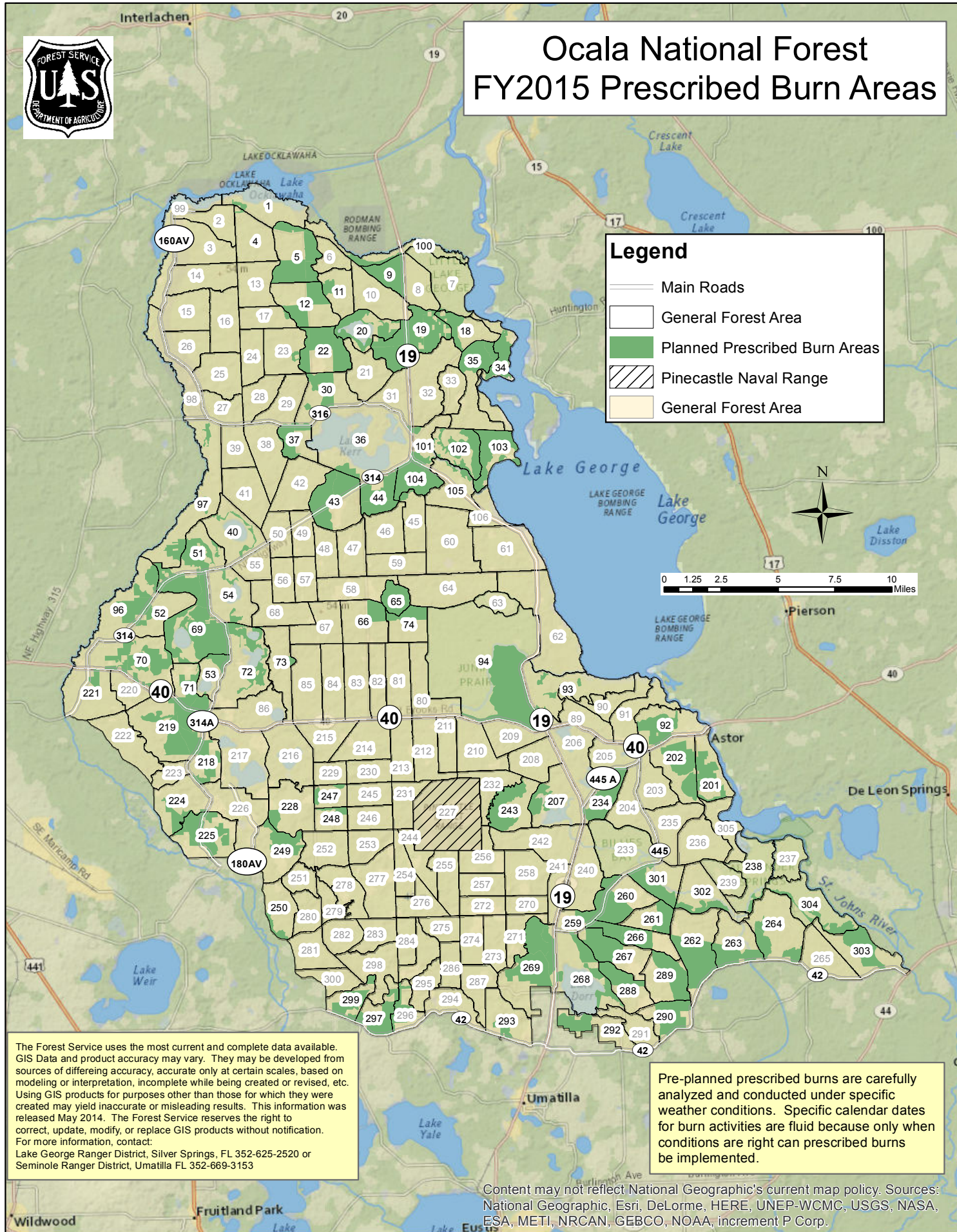




Ocala National Forest FY2015 Prescribed Burn Areas



Legend

- Main Roads
- General Forest Area
- Planned Prescribed Burn Areas
- Pinecastle Naval Range
- General Forest Area



The Forest Service uses the most current and complete data available. GIS Data and product accuracy may vary. They may be developed from sources of differing accuracy, accurate only at certain scales, based on modeling or interpretation, incomplete while being created or revised, etc. Using GIS products for purposes other than those for which they were created may yield inaccurate or misleading results. This information was released May 2014. The Forest Service reserves the right to correct, update, modify, or replace GIS products without notification. For more information, contact:
Lake George Ranger District, Silver Springs, FL 352-625-2520 or
Seminole Ranger District, Umatilla FL 352-669-3153

Pre-planned prescribed burns are carefully analyzed and conducted under specific weather conditions. Specific calendar dates for burn activities are fluid because only when conditions are right can prescribed burns be implemented.

Content may not reflect National Geographic's current map policy. Sources: National Geographic, Esri, DeLorme, HERE, UNEP-WCMC, USGS, NASA, ESA, METI, NRCAN, GEBCO, NOAA, increment P Corp.