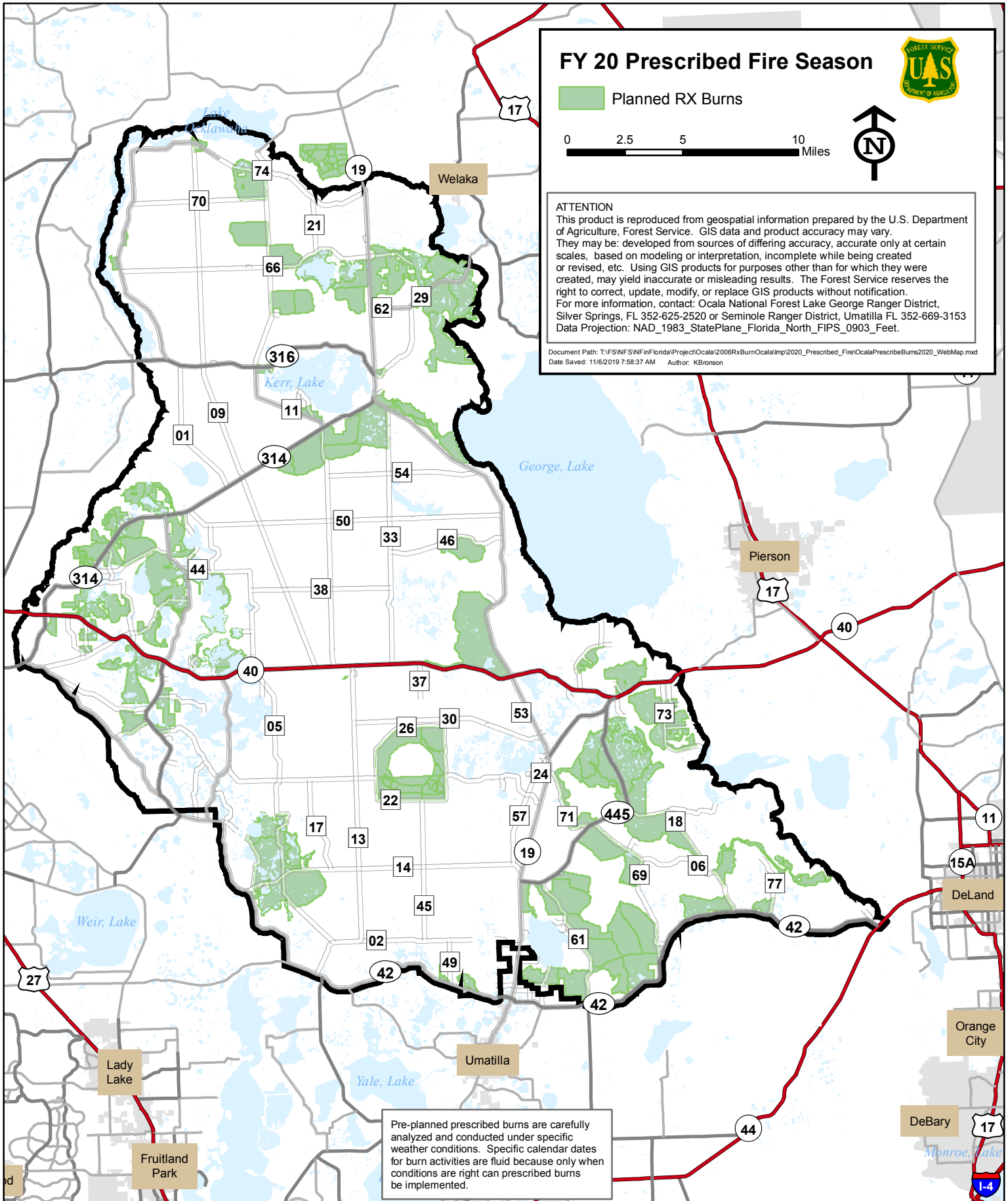


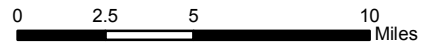
Ocala National Forest FY2020 Prescribed Burning Planning Map



FY 20 Prescribed Fire Season



Planned RX Burns



ATTENTION
 This product is reproduced from geospatial information prepared by the U.S. Department of Agriculture, Forest Service. GIS data and product accuracy may vary. They may be developed from sources of differing accuracy, accurate only at certain scales, based on modeling or interpretation, incomplete while being created or revised, etc. Using GIS products for purposes other than for which they were created, may yield inaccurate or misleading results. The Forest Service reserves the right to correct, update, modify, or replace GIS products without notification. For more information, contact: Ocala National Forest Lake George Ranger District, Silver Springs, FL 352-625-2520 or Seminole Ranger District, Umatilla FL 352-669-3153 Data Projection: NAD_1983_StatePlane_Florida_North_FIPS_0903_Feet.

Document Path: T:\FS\NFS\N\F\Florida\Project\Ocala\2006RxBurn\Ocala\mp\2020_Prescribed_Fire\OcalaPrescribeBurns2020_WebMap.mxd
 Date Saved: 11/6/2019 7:58:37 AM Author: KBronson

Pre-planned prescribed burns are carefully analyzed and conducted under specific weather conditions. Specific calendar dates for burn activities are fluid because only when conditions are right can prescribed burns be implemented.