

Legend

- Roads Open to Highway Legal Vehicles Only
- Roads Open to All Vehicles
- Trails Open to All Vehicles
- Special Designation: Trails Open to Vehicles 62" or Less in Width
- Trails Open to Motorcycles Only
- Seasonal Designation
- Dispersed Camping / Elk Retrieval
- Elk Retrieval (ER) Zone
- Interstate
- Highways, US, State
- Other Public Roads
- Motorized Trailhead
- FS Campground
- Picnic Area
- Information Site
- Peaks
- Forest or District Boundary
- National Forest System Lands
- Non-National Forest System Lands within the National Forest
- Wilderness Area
- State or County Boundary
- Township and Range Lines
- Section Lines
- Lakes

EXPLANATION OF LEGEND ITEMS

Roads Open to Highway Legal Vehicles Only:

These roads are open only to motor vehicles licensed under State law for general operation on all public roads within the state.

Roads Open to All Vehicles:

These roads are open to all motor vehicles, including smaller off-highway vehicles that may not be licensed for highway use (but not to oversize or overweight vehicles under State traffic law).

Trails Open to All Vehicles:

These trails are open to all motor vehicles, including both highway legal and nonhighway legal vehicles.

Special Designation: Trails Open to Vehicles 62 inches or Less in Width:

Trails open only to motor vehicles 62 inches or less in width - measurement is taken from the outside of one tire to the outside of the opposite tire, measured using the widest tread width (front or back).

Trails Open to Motorcycles Only:

These trails are open only to motorcycles. Sidewalks are not permitted.

Other Public Roads:

Interstate
Highways, U.S. State
Other Public Roads

These symbols show routes the Forest Service does not have jurisdiction over and has not designated for motorized use. These symbols are part of the reference layers showing connections to towns and cities outside the forest boundary.

Motorized Trail Access:

This symbol indicates a trailhead for access to a motorized route. Not all motorized routes have trailheads and those that do may range from primitive to developed.

Seasonal Designation:

This symbol, used in conjunction with one of the other road or trail symbols, indicates that the road or trail is open during certain portions of the year. Refer to Seasonal Designation Tables on back for specific information.

Dispersed Camping/Elk Retrieval:

This dotted symbol is used along with a designated road or trail symbol to indicate limited cross-country motor vehicle use within a specific distance of that road or trail, solely for the purpose of dispersed camping and/or elk retrieval. The dots indicate where this activity is permitted. They may be on the left, right, or both sides of the road or trail. Refer to **DISPERSED CAMPING** and **ELK RETRIEVAL** Tables on back for specific information.

Elk Retrieval (ER) Zone:

This symbol indicates limited cross-country motor vehicle use within a specific distance of roads, solely for the purpose of elk retrieval. Refer to **ELK RETRIEVAL** Tables for specific information.

BLANKET TRAVEL MANAGEMENT STATEMENTS

Roads and Trails requiring Permits:

Motorized Trails in the South Dakota portion of the Black Hills National Forest require vehicles to display a Black Hills National Forest Motorized Trail Permit.

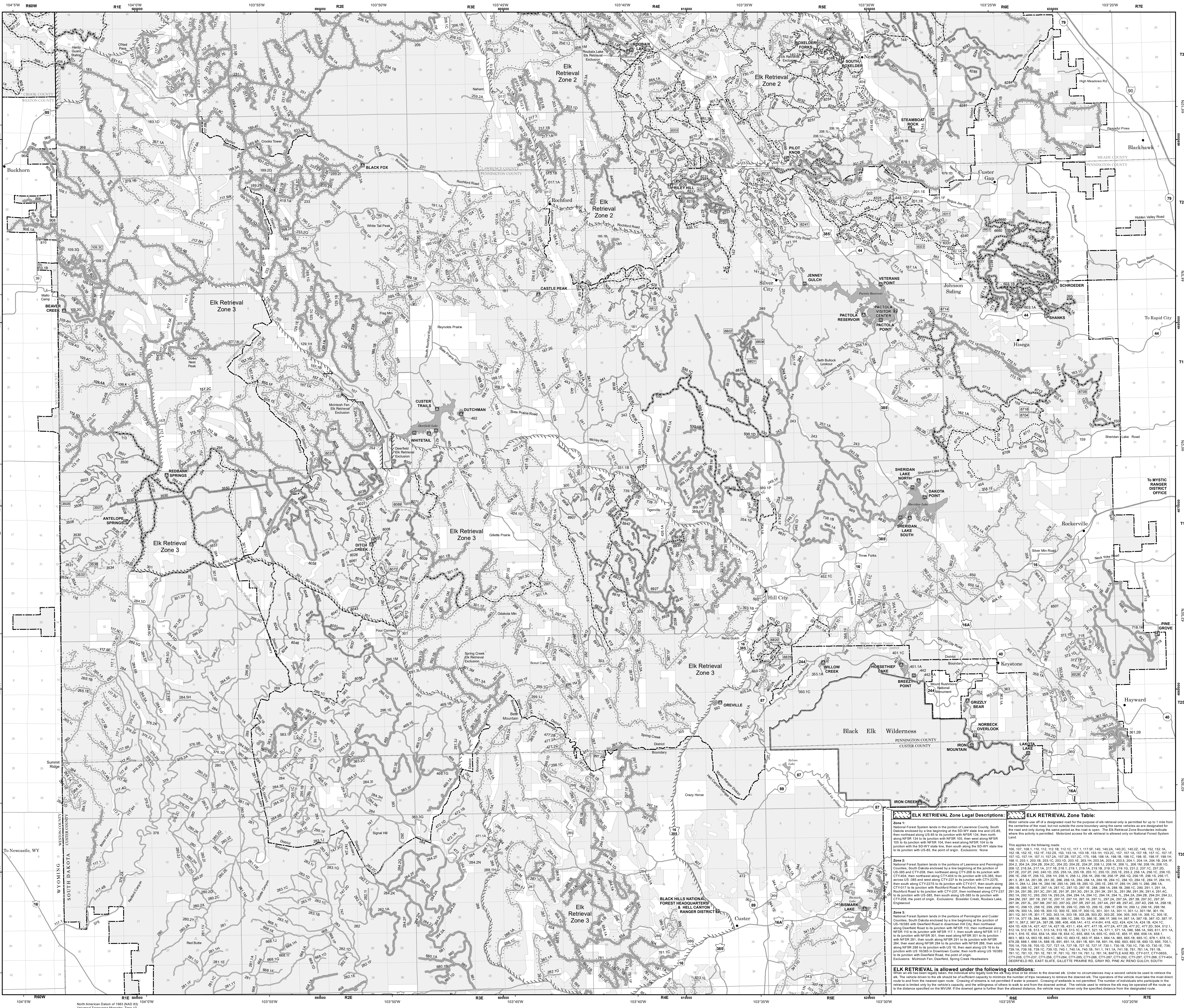
Roads Open to All in the South Dakota portion of the Black Hills National Forest require operators to have a Driver's License and vehicles to display a state license plate or a Black Hills National Forest Motorized Trail Permit.

Motorized Trails in the Wyoming portion of the Black Hills National Forest are enrolled in the Wyoming ORV Program and require vehicles to display a Wyoming ORV Permit.

Roads Open to All in the Wyoming portion of the Black Hills National Forest that are enrolled in the Wyoming ORV Program require operators to have a Driver's License and vehicles to display a state license plate or a Wyoming ORV Permit.

Special Designation Trail Table (South Dakota only)

Trail	South Dakota only
1100	3101, 3201, 3301, 3401, 3501, 3601, 3701, 3801, 3901, 4001, 4101, 4201, 4301, 4401, 4501, 4601, 4701, 4801, 4901, 5001, 5101, 5201, 5301, 5401, 5501, 5601, 5701, 5801, 5901, 6001, 6101, 6201, 6301, 6401, 6501, 6601, 6701, 6801, 6901, 7001, 7101, 7201, 7301, 7401, 7501, 7601, 7701, 7801, 7901, 8001, 8101, 8201, 8301, 8401, 8501, 8601, 8701, 8801, 8901, 9001, 9101, 9201, 9301, 9401, 9501, 9601, 9701, 9801, 9901, 1000
1000	1001, 1002, 1003, 1004, 1005, 1006, 1007, 1008, 1009, 1010, 1011, 1012, 1013, 1014, 1015, 1016, 1017, 1018, 1019, 1020, 1021, 1022, 1023, 1024, 1025, 1026, 1027, 1028, 1029, 1030, 1031, 1032, 1033, 1034, 1035, 1036, 1037, 1038, 1039, 1040, 1041, 1042, 1043, 1044, 1045, 1046, 1047, 1048, 1049, 1050, 1051, 1052, 1053, 1054, 1055, 1056, 1057, 1058, 1059, 1060, 1061, 1062, 1063, 1064, 1065, 1066, 1067, 1068, 1069, 1070, 1071, 1072, 1073, 1074, 1075, 1076, 1077, 1078, 1079, 1080, 1081, 1082, 1083, 1084, 1085, 1086, 1087, 1088, 1089, 1090, 1091, 1092, 1093, 1094, 1095, 1096, 1097, 1098, 1099, 1100
1000	1001, 1002, 1003, 1004, 1005, 1006, 1007, 1008, 1009, 1010, 1011, 1012, 1013, 1014, 1015, 1016, 1017, 1018, 1019, 1020, 1021, 1022, 1023, 1024, 1025, 1026, 1027, 1028, 1029, 1030, 1031, 1032, 1033, 1034, 1035, 1036, 1037, 1038, 1039, 1040, 1041, 1042, 1043, 1044, 1045, 1046, 1047, 1048, 1049, 1050, 1051, 1052, 1053, 1054, 1055, 1056, 1057, 1058, 1059, 1060, 1061, 1062, 1063, 1064, 1065, 1066, 1067, 1068, 1069, 1070, 1071, 1072, 1073, 1074, 1075, 1076, 1077, 1078, 1079, 1080, 1081, 1082, 1083, 1084, 1085, 1086, 1087, 1088, 1089, 1090, 1091, 1092, 1093, 1094, 1095, 1096, 1097, 1098, 1099, 1100
1000	1001, 1002, 1003, 1004, 1005, 1006, 1007, 1008, 1009, 1010, 1011, 1012, 1013, 1014, 1015, 1016, 1017, 1018, 1019, 1020, 1021, 1022, 1023, 1024, 1025, 1026, 1027, 1028, 1029, 1030, 1031, 1032, 1033, 1034, 1035, 1036, 1037, 1038, 1039, 1040, 1041, 1042, 1043, 1044, 1045, 1046, 1047, 1048, 1049, 1050, 1051, 1052, 1053, 1054, 1055, 1056, 1057, 1058, 1059, 1060, 1061, 1062, 1063, 1064, 1065, 1066, 1067, 1068, 1069, 1070, 1071, 1072, 1073, 1074, 1075, 1076, 1077, 1078, 1079, 1080, 1081, 1082, 1083, 1084, 1085, 1086, 1087, 1088, 1089, 1090, 1091, 1092, 1093, 1094, 1095, 1096, 1097, 1098, 1099, 1100



ELK RETRIEVAL Zone Legal Descriptions:

Zone 1: National Forest System lands in the portion of Lawrence County, South Dakota enclosed by a line beginning at the intersection of US-85 and CTY-208, then northeast along CTY-208 to its junction with US-85, then northeast along US-85 to its junction with NFR 134, then north along NFR 134 to its junction with NFR 105, then west along NFR 105 to its junction with NFR 124, then west along NFR 124 to its junction with the SD-WY state line, then south along the SD-WY state line to its junction with US-85, the point of origin. Exclusions: None.

Zone 2: National Forest System lands in the portions of Lawrence and Pennington Counties, South Dakota enclosed by a line beginning at the intersection of US-85 and CTY-208, then northeast along CTY-208 to its junction with US-85, then northeast along US-85 to its junction with NFR 134, then north along NFR 134 to its junction with NFR 105, then west along NFR 105 to its junction with NFR 124, then west along NFR 124 to its junction with the SD-WY state line, then south along the SD-WY state line to its junction with US-85, the point of origin. Exclusions: Boxelder Creek, Rockwood Lake.

Zone 3: National Forest System lands in the portions of Pennington and Custer Counties, South Dakota enclosed by a line beginning at the intersection of US-16B and Deerfield Road in downtown Hill City, then northwest along Deerfield Road to its junction with NFR 117, then south along NFR 117 to its junction with NFR 291, then east along NFR 291 to its junction with NFR 292, then east along NFR 292 to its junction with NFR 293, then east along NFR 293 to its junction with NFR 294, then east along NFR 294 to its junction with NFR 295, then east along NFR 295 to its junction with NFR 296, then east along NFR 296 to its junction with NFR 297, then east along NFR 297 to its junction with NFR 298, then east along NFR 298 to its junction with NFR 299, then east along NFR 299 to its junction with NFR 300, then east along NFR 300 to its junction with NFR 301, then east along NFR 301 to its junction with NFR 302, then east along NFR 302 to its junction with NFR 303, then east along NFR 303 to its junction with NFR 304, then east along NFR 304 to its junction with NFR 305, then east along NFR 305 to its junction with NFR 306, then east along NFR 306 to its junction with NFR 307, then east along NFR 307 to its junction with NFR 308, then east along NFR 308 to its junction with NFR 309, then east along NFR 309 to its junction with NFR 310, then east along NFR 310 to its junction with NFR 311, then east along NFR 311 to its junction with NFR 312, then east along NFR 312 to its junction with NFR 313, then east along NFR 313 to its junction with NFR 314, then east along NFR 314 to its junction with NFR 315, then east along NFR 315 to its junction with NFR 316, then east along NFR 316 to its junction with NFR 317, then east along NFR 317 to its junction with NFR 318, then east along NFR 318 to its junction with NFR 319, then east along NFR 319 to its junction with NFR 320, then east along NFR 320 to its junction with NFR 321, then east along NFR 321 to its junction with NFR 322, then east along NFR 322 to its junction with NFR 323, then east along NFR 323 to its junction with NFR 324, then east along NFR 324 to its junction with NFR 325, then east along NFR 325 to its junction with NFR 326, then east along NFR 326 to its junction with NFR 327, then east along NFR 327 to its junction with NFR 328, then east along NFR 328 to its junction with NFR 329, then east along NFR 329 to its junction with NFR 330, then east along NFR 330 to its junction with NFR 331, then east along NFR 331 to its junction with NFR 332, then east along NFR 332 to its junction with NFR 333, then east along NFR 333 to its junction with NFR 334, then east along NFR 334 to its junction with NFR 335, then east along NFR 335 to its junction with NFR 336, then east along NFR 336 to its junction with NFR 337, then east along NFR 337 to its junction with NFR 338, then east along NFR 338 to its junction with NFR 339, then east along NFR 339 to its junction with NFR 340, then east along NFR 340 to its junction with NFR 341, then east along NFR 341 to its junction with NFR 342, then east along NFR 342 to its junction with NFR 343, then east along NFR 343 to its junction with NFR 344, then east along NFR 344 to its junction with NFR 345, then east along NFR 345 to its junction with NFR 346, then east along NFR 346 to its junction with NFR 347, then east along NFR 347 to its junction with NFR 348, then east along NFR 348 to its junction with NFR 349, then east along NFR 349 to its junction with NFR 350, then east along NFR 350 to its junction with NFR 351, then east along NFR 351 to its junction with NFR 352, then east along NFR 352 to its junction with NFR 353, then east along NFR 353 to its junction with NFR 354, then east along NFR 354 to its junction with NFR 355, then east along NFR 355 to its junction with NFR 356, then east along NFR 356 to its junction with NFR 357, then east along NFR 357 to its junction with NFR 358, then east along NFR 358 to its junction with NFR 359, then east along NFR 359 to its junction with NFR 360, then east along NFR 360 to its junction with NFR 361, then east along NFR 361 to its junction with NFR 362, then east along NFR 362 to its junction with NFR 363, then east along NFR 363 to its junction with NFR 364, then east along NFR 364 to its junction with NFR 365, then east along NFR 365 to its junction with NFR 366, then east along NFR 366 to its junction with NFR 367, then east along NFR 367 to its junction with NFR 368, then east along NFR 368 to its junction with NFR 369, then east along NFR 369 to its junction with NFR 370, then east along NFR 370 to its junction with NFR 371, then east along NFR 371 to its junction with NFR 372, then east along NFR 372 to its junction with NFR 373, then east along NFR 373 to its junction with NFR 374, then east along NFR 374 to its junction with NFR 375, then east along NFR 375 to its junction with NFR 376, then east along NFR 376 to its junction with NFR 377, then east along NFR 377 to its junction with NFR 378, then east along NFR 378 to its junction with NFR 379, then east along NFR 379 to its junction with NFR 380, then east along NFR 380 to its junction with NFR 381, then east along NFR 381 to its junction with NFR 382, then east along NFR 382 to its junction with NFR 383, then east along NFR 383 to its junction with NFR 384, then east along NFR 384 to its junction with NFR 385, then east along NFR 385 to its junction with NFR 386, then east along NFR 386 to its junction with NFR 387, then east along NFR 387 to its junction with NFR 388, then east along NFR 388 to its junction with NFR 389, then east along NFR 389 to its junction with NFR 390, then east along NFR 390 to its junction with NFR 391, then east along NFR 391 to its junction with NFR 392, then east along NFR 392 to its junction with NFR 393, then east along NFR 393 to its junction with NFR 394, then east along NFR 394 to its junction with NFR 395, then east along NFR 395 to its junction with NFR 396, then east along NFR 396 to its junction with NFR 397, then east along NFR 397 to its junction with NFR 398, then east along NFR 398 to its junction with NFR 399, then east along NFR 399 to its junction with NFR 400, then east along NFR 400 to its junction with NFR 401, then east along NFR 401 to its junction with NFR 402, then east along NFR 402 to its junction with NFR 403, then east along NFR 403 to its junction with NFR 404, then east along NFR 404 to its junction with NFR 405, then east along NFR 405 to its junction with NFR 406, then east along NFR 406 to its junction with NFR 407, then east along NFR 407 to its junction with NFR 408, then east along NFR 408 to its junction with NFR 409, then east along NFR 409 to its junction with NFR 410, then east along NFR 410 to its junction with NFR 411, then east along NFR 411 to its junction with NFR 412, then east along NFR 412 to its junction with NFR 413, then east along NFR 413 to its junction with NFR 414, then east along NFR 414 to its junction with NFR 415, then east along NFR 415 to its junction with NFR 416, then east along NFR 416 to its junction with NFR 417, then east along NFR 417 to its junction with NFR 418, then east along NFR 418 to its junction with NFR 419, then east along NFR 419 to its junction with NFR 420, then east along NFR 420 to its junction with NFR 421, then east along NFR 421 to its junction with NFR 422, then east along NFR 422 to its junction with NFR 423, then east along NFR 423 to its junction with NFR 424, then east along NFR 424 to its junction with NFR 425, then east along NFR 425 to its junction with NFR 426, then east along NFR 426 to its junction with NFR 427, then east along NFR 427 to its junction with NFR 428, then east along NFR 428 to its junction with NFR 429, then east along NFR 429 to its junction with NFR 430, then east along NFR 430 to its junction with NFR 431, then east along NFR 431 to its junction with NFR 432, then east along NFR 432 to its junction with NFR 433, then east along NFR 433 to its junction with NFR 434, then east along NFR 434 to its junction with NFR 435, then east along NFR 435 to its junction with NFR 436, then east along NFR 436 to its junction with NFR 437, then east along NFR 437 to its junction with NFR 438, then east along NFR 438 to its junction with NFR 439, then east along NFR 439 to its junction with NFR 440, then east along NFR 440 to its junction with NFR 441, then east along NFR 441 to its junction with NFR 442, then east along NFR 442 to its junction with NFR 443, then east along NFR 443 to its junction with NFR 444, then east along NFR 444 to its junction with NFR 445, then east along NFR 445 to its junction with NFR 446, then east along NFR 446 to its junction with NFR 447, then east along NFR 447 to its junction with NFR 448, then east along NFR 448 to its junction with NFR 449, then east along NFR 449 to its junction with NFR 450, then east along NFR 450 to its junction with NFR 451, then east along NFR 451 to its junction with NFR 452, then east along NFR 452 to its junction with NFR 453, then east along NFR 453 to its junction with NFR 454, then east along NFR 454 to its junction with NFR 455, then east along NFR 455 to its junction with NFR 456, then east along NFR 456 to its junction with NFR 457, then east along NFR 457 to its junction with NFR 458, then east along NFR 458 to its junction with NFR 459, then east along NFR 459 to its junction with NFR 460, then east along NFR 460 to its junction with NFR 461, then east along NFR 461 to its junction with NFR 462, then east along NFR 462 to its junction with NFR 463, then east along NFR 463 to its junction with NFR 464, then east along NFR 464 to its junction with NFR 465, then east along NFR 465 to its junction with NFR 466, then east along NFR 466 to its junction with NFR 467, then east along NFR 467 to its junction with NFR 468, then east along NFR 468 to its junction with NFR 469, then east along NFR 469 to its junction with NFR 470, then east along NFR 470 to its junction with NFR 471, then east along NFR 471 to its junction with NFR 472, then east along NFR 472 to its junction with NFR 473, then east along NFR 473 to its junction with NFR 474, then east along NFR 474 to its junction with NFR 475, then east along NFR 475 to its junction with NFR 476, then east along NFR 476 to its junction with NFR 477, then east along NFR 477 to its junction with NFR 478, then east along NFR 478 to its junction with NFR 479, then east along NFR 479 to its junction with NFR 480, then east along NFR 480 to its junction with NFR 481, then east along NFR 481 to its junction with NFR 482, then east along NFR 482 to its junction with NFR 483, then east along NFR 483 to its junction with NFR 484, then east along NFR 484 to its junction with NFR 485, then east along NFR 485 to its junction with NFR 486, then east along NFR 486 to its junction with NFR 487, then east along NFR 487 to its junction with NFR 488, then east along NFR 488 to its junction with NFR 489, then east along NFR 489 to its junction with NFR 490, then east along NFR 490 to its junction with NFR 491, then east along NFR 491 to its junction with NFR 492, then east along NFR 492 to its junction with NFR 493, then east along NFR 493 to its junction with NFR 494, then east along NFR 494 to its junction with NFR 495, then east along NFR 495 to its junction with NFR 496, then east along NFR 496 to its junction with NFR 497, then east along NFR 497 to its junction with NFR 498, then east along NFR 498 to its junction with NFR 499, then east along NFR 499 to its junction with NFR 500.