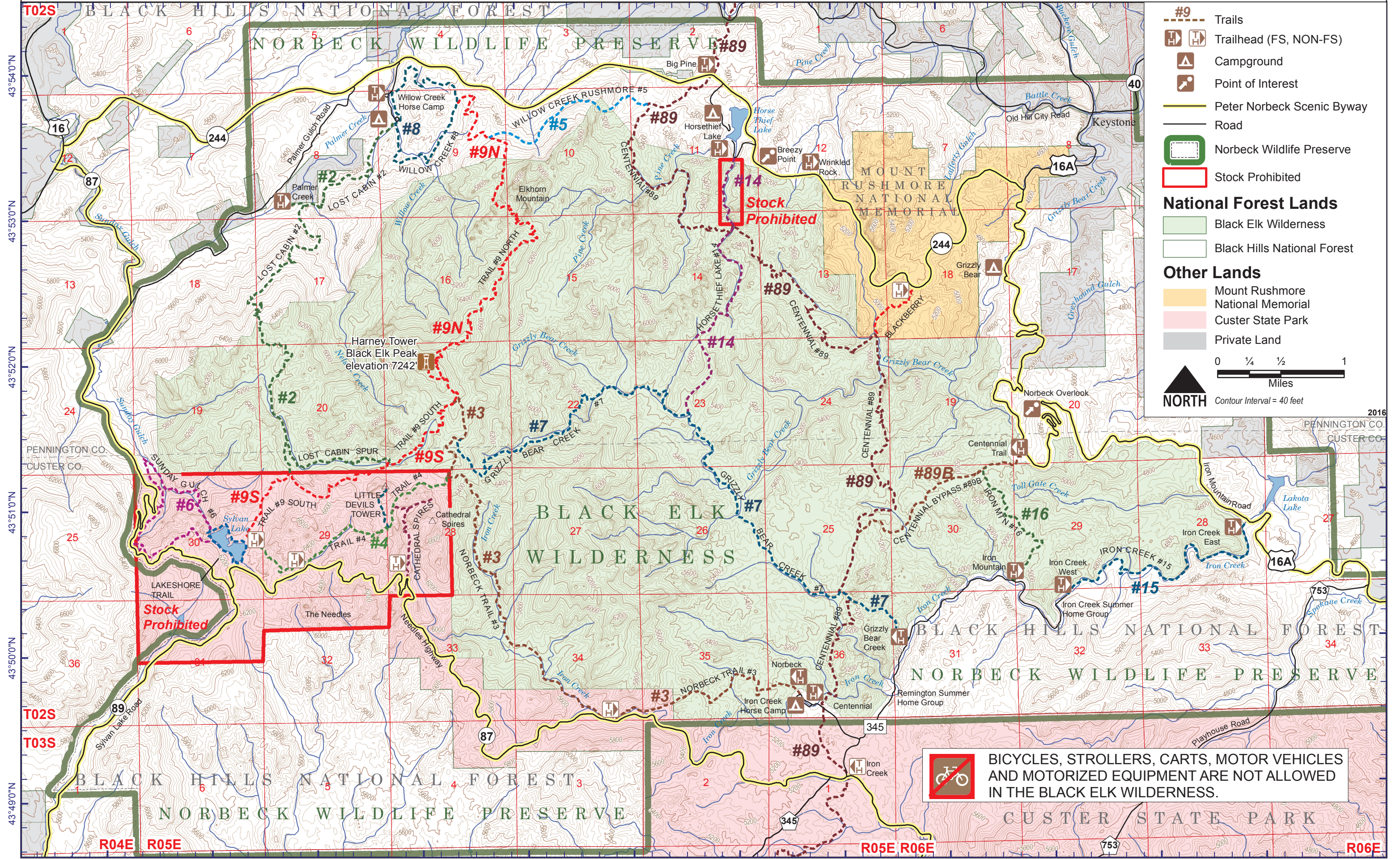




# Black Elk Wilderness and Norbeck Wildlife Preserve Trail System



**#9** Trails

Trailhead (FS, NON-FS)

Campground

Point of Interest

Peter Norbeck Scenic Byway

Road

Norbeck Wildlife Preserve

Stock Prohibited

**National Forest Lands**

Black Elk Wilderness

Black Hills National Forest

**Other Lands**

Mount Rushmore National Memorial

Custer State Park

Private Land

0 1/4 1/2 1  
Miles

NORTH  
Contour Interval = 40 feet

BICYCLES, STROLLERS, CARTS, MOTOR VEHICLES AND MOTORIZED EQUIPMENT ARE NOT ALLOWED IN THE BLACK ELK WILDERNESS.

43°54'0"N  
43°53'0"N  
43°52'0"N  
43°51'0"N  
43°50'0"N  
43°49'0"N

T02S  
T03S  
R04E R05E R06E

103°35'0"W 103°34'0"W 103°33'0"W 103°32'0"W 103°31'0"W 103°30'0"W 103°29'0"W 103°28'0"W 103°27'0"W 103°26'0"W 103°25'0"W 103°24'0"W 103°23'0"W