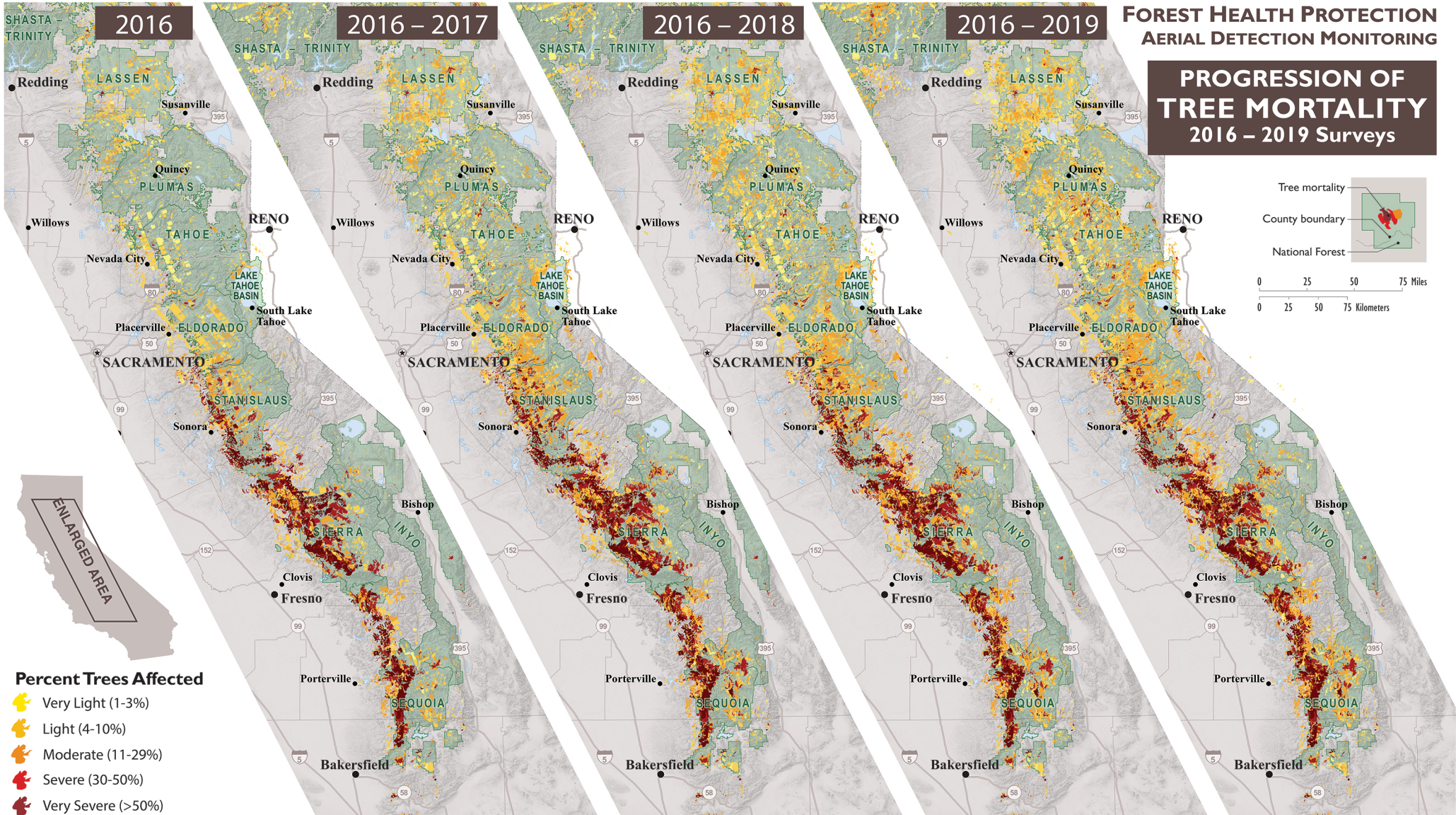


**FOREST HEALTH PROTECTION
AERIAL DETECTION MONITORING**

**PROGRESSION OF
TREE MORTALITY
2016 – 2019 Surveys**



Percent Trees Affected

- Very Light (1-3%)
- Light (4-10%)
- Moderate (11-29%)
- Severe (30-50%)
- Very Severe (>50%)

Tree mortality

County boundary

National Forest

0 25 50 75 Miles

0 25 50 75 Kilometers

