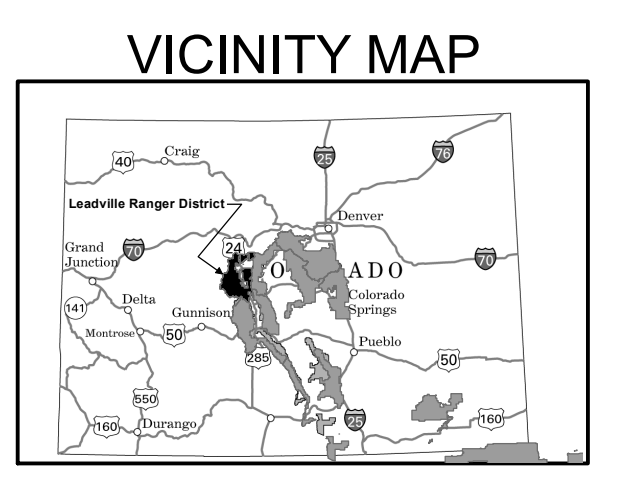


Motor Vehicle Use Map San Isabel National Forest Leadville Ranger District



INFORMATION SOURCES

Leadville Ranger District
810 Front Street
Leadville, CO 80461
(719) 486-0749
www.fs.usda.gov/goto/psico/leadville

Forest Supervisor
Pike and San Isabel National Forests
Cimarron and Comanche National Grasslands
2840 Kachina Drive
Pueblo, CO 81008
(719) 553-1400

In case of Emergency: Dial 911

PROHIBITIONS

It is prohibited to possess or operate a motor vehicle on National Forest System lands on the Leadville Ranger District other than in accordance with these designations (36 CFR 261.13).

Violators of 36 CFR 261.13 are subject to a fine of up to \$5,000, imprisonment for up to 6 months or both (18 U.S.C. 3571(e)). This prohibition applies regardless of the presence or absence of signs.

This map does not display nonmotorized uses, over-snow uses, or other facilities and attractions on the Leadville Ranger District. Obtain forest visitor information from the local national forest office.

Designated roads, trails and areas may also be subject to temporary, emergency closures. As a visitor, you must comply with signs notifying you of such restrictions. A national forest may issue an order to close a road, trail or area on a temporary basis to protect the life, health, or safety of forest visitors or the natural or cultural resources in these areas. Such temporary and/or emergency closures are consistent with the Travel Management Rule (36 CFR 212.52(b), 36 CFR 261 subpart B).

The designation "road or trail open to all motor vehicles" does not supersede State traffic law.



In accordance with Federal civil rights law and U.S. Department of Agriculture (USDA) civil rights regulations and policies, the USDA, its Agencies, offices, and employees, and institutions participating in or administering USDA programs are prohibited from discriminating based on race, color, national origin, religion, sex, gender identity (including gender expression), sexual orientation, disability, age, marital status, family/parental status, income derived from a public assistance program, political beliefs, or reprisal or retaliation for prior civil rights activity, in any program or activity conducted or funded by USDA (not all bases apply to all programs). Remedies and complaint filing deadlines vary by program or incident.

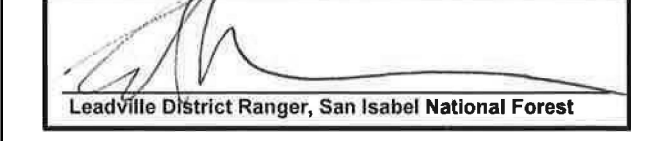
Persons with disabilities who require alternative means of communication for program information (e.g., Braille, large print, audiotape, American Sign Language, etc.) should contact the responsible Agency or USDA's TARGET Center (toll-free 1-800-835-2860) (voice and TTY) or contact USDA through the Federal Relay Service at (800) 877-8339. Additionally, program information may be made available in languages other than English.

To file a program discrimination complaint, complete the USDA Program Discrimination Complaint Form, AD-3027, found online at http://www.ascr.usda.gov/complaint_filing_cust.html and at any USDA office or write a letter addressed to USDA and provide in the letter all of the information requested in the form. To request a copy of the complaint form, call (866) 632-9992. Submit your completed form or letter to USDA by: (1) mail: U.S. Department of Agriculture, Office of the Assistant Secretary for Civil Rights, 1400 Independence Avenue, SW, Washington, D.C. 20250-9410; (2) fax: (202) 690-7442; or (3) email: program.intake@usda.gov.

USDA is an equal opportunity provider, employer, and lender.

PURPOSE AND CONTENTS OF THIS MAP

The designations shown on this motor vehicle use map (MVUM) were made by the responsible official pursuant to 36 CFR 212.51, are effective as of the date on the front cover of this MVUM, and will remain in effect until superseded by the next year's MVUM.



It is the responsibility of the user to acquire the current MVUM. This MVUM shows the National Forest System roads, National Forest System trails, and the areas on National Forest System lands in the Leadville Ranger District that are designated for motor vehicle use pursuant to 36 CFR 212.51. This MVUM also identifies the vehicle classes allowed on each route and in each area, and any seasonal restrictions that apply on those routes and in those areas.

Designation of a road, trail, or area for motor vehicle use by a particular class of vehicle under 36 CFR 212.51 should not be interpreted as encouraging or inviting use, or implying that the road, trail or area is passable, actively maintained, or safe for travel. Motor vehicle designations include parking along designated routes and at facilities associated with designated routes when it is safe to do so and when not causing damage to National Forest System resources. Seasonal weather conditions and natural events may render designated roads and trails impassable for extended periods. Designated areas may contain dangerous or impassable terrain. Many designated roads and trails may be passable only by high-clearance vehicles or four-wheel drive vehicles. Maintenance of designated roads and trails will depend on available resources, and many may receive little maintenance.

This motor vehicle use map identifies those roads, trails, and areas designated for the motor vehicle use under 36 CFR 212.51 for the purpose of enforcing the prohibition at 36 CFR 212.51. This is a National Forest Service purpose. The other public roads are shown for information and navigation purposes only and are not subject to designation under the Forest Service travel management regulation.

These designations apply only to National Forest System roads, National Forest System trails, and areas on National Forest System lands.

LEGEND

- Roads Open to All Vehicles
- Seasonal Designation (See Table)
- Highways, US, State, County, Other
- U.S. Highway Route Number
- State Highway Route Number
- County Road Number
- Short Route Identifier (See Short Route Table)
- Mountain Peaks
- Forest or Unit Boundary
- National Forest System Lands
- Non-National Forest System Lands within the Nat'l Forest
- County Boundary
- Township and Range Lines
- Section Lines
- Lakes and Rivers
- Wilderness Areas

OPERATOR RESPONSIBILITIES

Operating a motor vehicle on National Forest System roads, National Forest System trails, and in areas on National Forest System lands carries a greater responsibility than operating that vehicle in a city or other developed setting. Not only must you know and follow all applicable traffic laws, you need to show concern for the environment as well as other forest users. The misuse of motor vehicles can lead to the temporary or permanent closure of any designated road, trail, or area. As a motor vehicle operator, you are also subject to State traffic law, including State requirements for licensing, registration, and operation of the vehicle in question.

Motor vehicle use, especially off-highway vehicle use, involves inherent risks that may cause property damage, serious injury, and possibly death to participants. Drive cautiously and anticipate rough surfaces and features, such as snow, mud, vegetation, and water crossings common to remote driving conditions. By your participation, you voluntarily assume full responsibility for these damages, risks, and dangers. Take care at all times to protect yourself and those under your responsibility.

Much of the Leadville Ranger District is remote. Medical assistance may not be readily available. Cellular telephones do not work in many areas of the Leadville Ranger District. Take adequate food, water, first aid supplies, and other equipment appropriate for the conditions and expected weather.

ALWAYS REMEMBER TO RESPECT PRIVATE LAND! PROTECT YOUR PRIVILEGE. STAY ON DESIGNATED ROADS AND TRAILS AND IN DESIGNATED AREAS.

Read and understand this map in its entirety. If you have questions, please contact the Leadville Ranger District for clarification.

As a motor vehicle operator on a National Forest System road, trail, or area, you must comply with this map, as well as all Federal, State, and local laws and regulations. Compliance with these rules is your responsibility.

EXPLANATION OF LEGEND ITEMS

Roads Open to All Vehicles: These roads are open to all motor vehicles, including smaller off-highway vehicles that may not be licensed for highway use (but not to oversize or overweight vehicles under State traffic law).

Seasonal Designation: This symbol, used in conjunction with one of the other road or trail symbols, indicates that the road or trail is open only during certain portions of the year. Refer to the Seasonal Designations Table for further instructions.

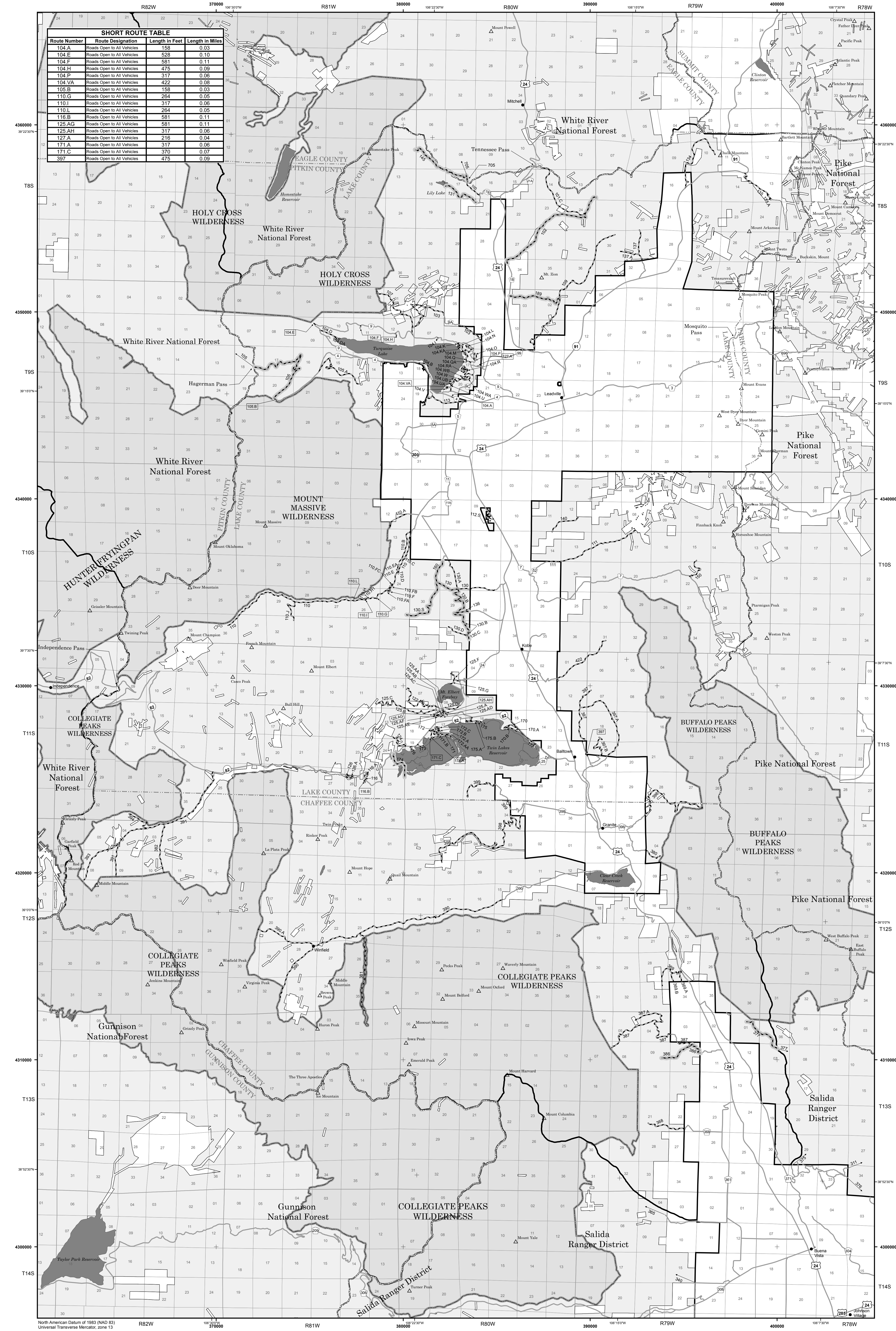
Other Public Roads: Highways: U.S., State, County, Other

These symbols are used to show routes the Forest Service does not have jurisdiction over and has not designated for motorized use. These symbols are part of the reference layers showing connections to towns and cities outside the forest boundary.

Short Route Identifier: This symbol is used for routes that are too short to show a symbol type on the map. The symbol contains the number of the road or trail. Users should refer to the corresponding number in the Short Route Table for designation information.

Travel and recreate with minimum impact. Respect the environment and the rights of others. Educate yourself; plan and prepare before you go. Allow for future use of the outdoors by leaving it better than you found it. Discover the rewards of responsible recreation.

For more information on Tread Lightly!, go to www.treadlightly.org or call 1-800-366-8900.



SHORT ROUTE TABLE

Route Number	Route Designation	Length in Feet	Length in Miles
104 A	Roads Open to All Vehicles	156	0.03
104 E	Roads Open to All Vehicles	528	0.10
104 F	Roads Open to All Vehicles	581	0.11
104 H	Roads Open to All Vehicles	475	0.09
104 P	Roads Open to All Vehicles	317	0.06
104 VA	Roads Open to All Vehicles	422	0.08
105 B	Roads Open to All Vehicles	178	0.03
110 G	Roads Open to All Vehicles	254	0.05
110 I	Roads Open to All Vehicles	317	0.06
110 L	Roads Open to All Vehicles	264	0.05
116 B	Roads Open to All Vehicles	581	0.11
125 AG	Roads Open to All Vehicles	581	0.11
125 AH	Roads Open to All Vehicles	317	0.06
127 A	Roads Open to All Vehicles	216	0.04
171 A	Roads Open to All Vehicles	317	0.06
171 C	Roads Open to All Vehicles	370	0.07
397	Roads Open to All Vehicles	475	0.09

Seasonal Designations

Route Number	Legend	Dates Allowed	Beginning Mile Post	Ending Mile Post
102	Roads Open to All Vehicles, with Seasonal Designation	September 1 - May 1	1.70	6.10
105	All Vehicles, with Seasonal Designation	June 30 - May 15	3.65	7.96
130	All Vehicles, with Seasonal Designation	June 1 - December 1	1.65	2.45
130.B	Roads Open to All Vehicles, with Seasonal Designation	June 1 - December 1	Entire	Length
130.C	Roads Open to All Vehicles, with Seasonal Designation	June 1 - December 1	0.00	0.17
130.S	Roads Open to All Vehicles, with Seasonal Designation	July 1 - December 1	0.00	2.00
131	All Vehicles, with Seasonal Designation	December 1 - May 1	0.40	1.80
136	All Vehicles, with Seasonal Designation	June 1 - December 1	1.25	1.75
145	All Vehicles, with Seasonal Designation	July 2 - March 31	Entire	Length
160	All Vehicles, with Seasonal Designation	June 1 - December 1	0.00	0.80
174	Roads Open to All Vehicles, with Seasonal Designation	June 30 - December 30	Entire	Length
189	Roads Open to All Vehicles, with Seasonal Designation	June 30 - May 1	Entire	Length
377	Roads Open to All Vehicles, with Seasonal Designation	May 1 - November 30	Entire	Length
386	All Vehicles, with Seasonal Designation	June 15 - March 15	0.80	2.61
705	All Vehicles, with Seasonal Designation	July 2 - March 31	0.00	0.17

BLANKET STATEMENTS FOR TRAVEL MANAGEMENT

Map Revisions

The designations shown on this map will remain in effect until revised with the publication of a new map. In January of each year, this motor vehicle use map will either be revised with the publication of a new map, or it will be validated for the new year by the Ranger District with a red stamp that says: "Valid for Year 20__".

Parking/Dispersed Camping on the San Isabel National Forest

- Where designated parking areas are not available, and where not specifically prohibited, unsafe, or causing resource damage, parking on National Forest System lands within one vehicle length off of designated routes is authorized.
- Dispersed camping is authorized on National Forest System lands except in specially designated areas that are closed to dispersed camping.
- Motorized dispersed camping is authorized within one vehicle length off of designated National Forest System routes, where not specifically prohibited, unsafe, or causing resource damage.
- Check with the local National Forest District office for current information on areas closed to camping and for other travel management information.