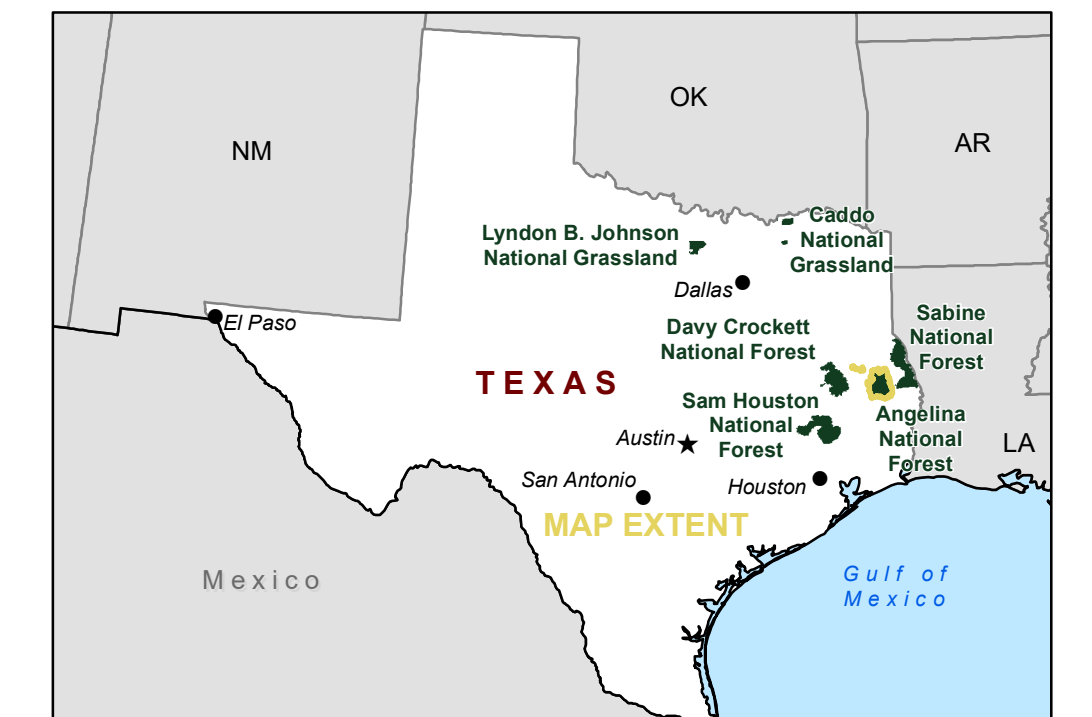
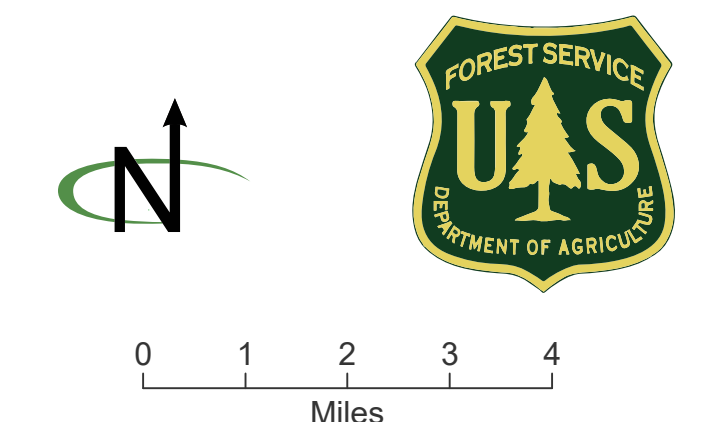
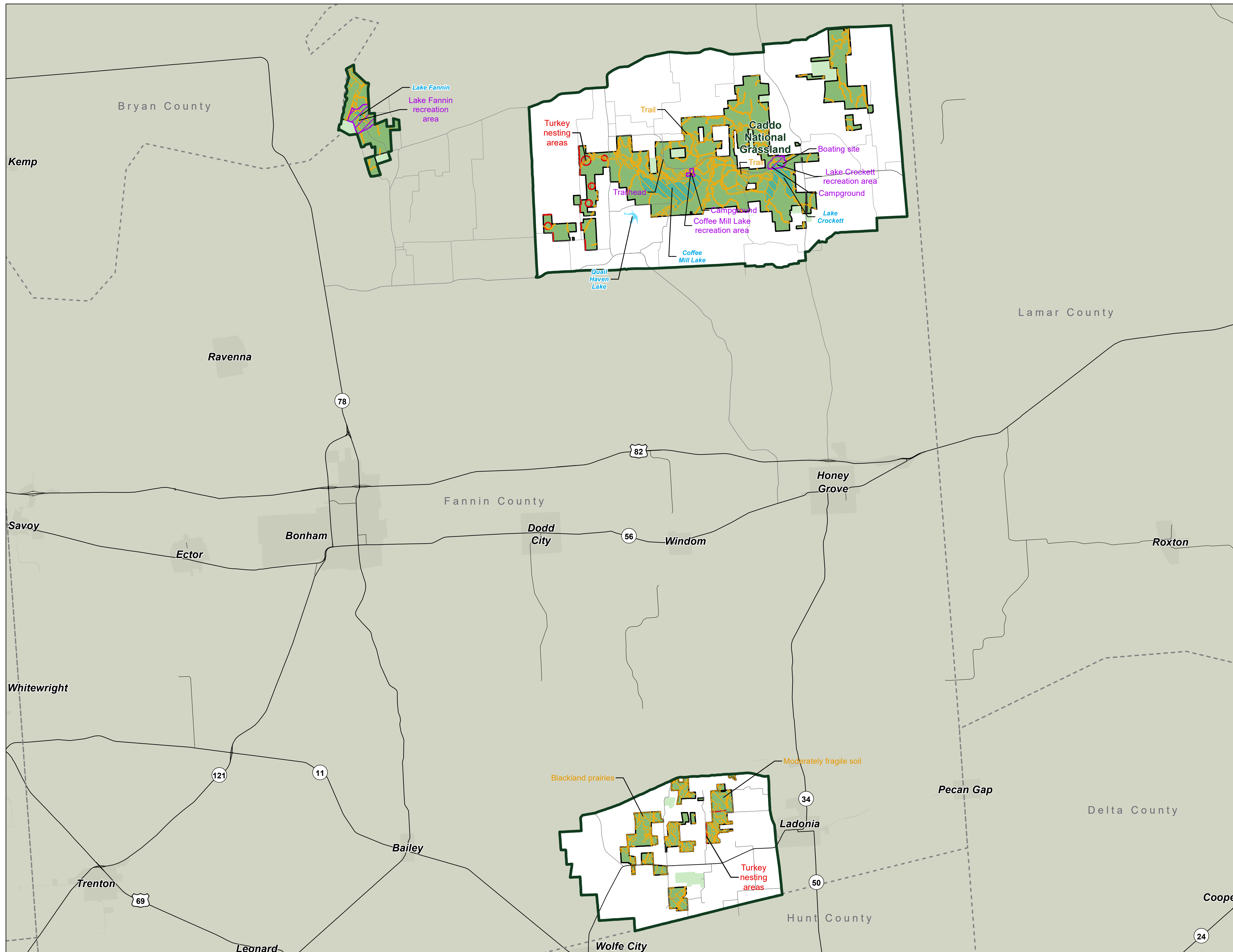


Angelina National Forest: Existing Stipulations

-  No surface occupancy
-  Controlled surface use
-  Timing limitation
-  National Forest or Grassland
-  Decision area
-  Forest Service surface administration
-  Ranger Office
-  Counties
-  Wilderness area

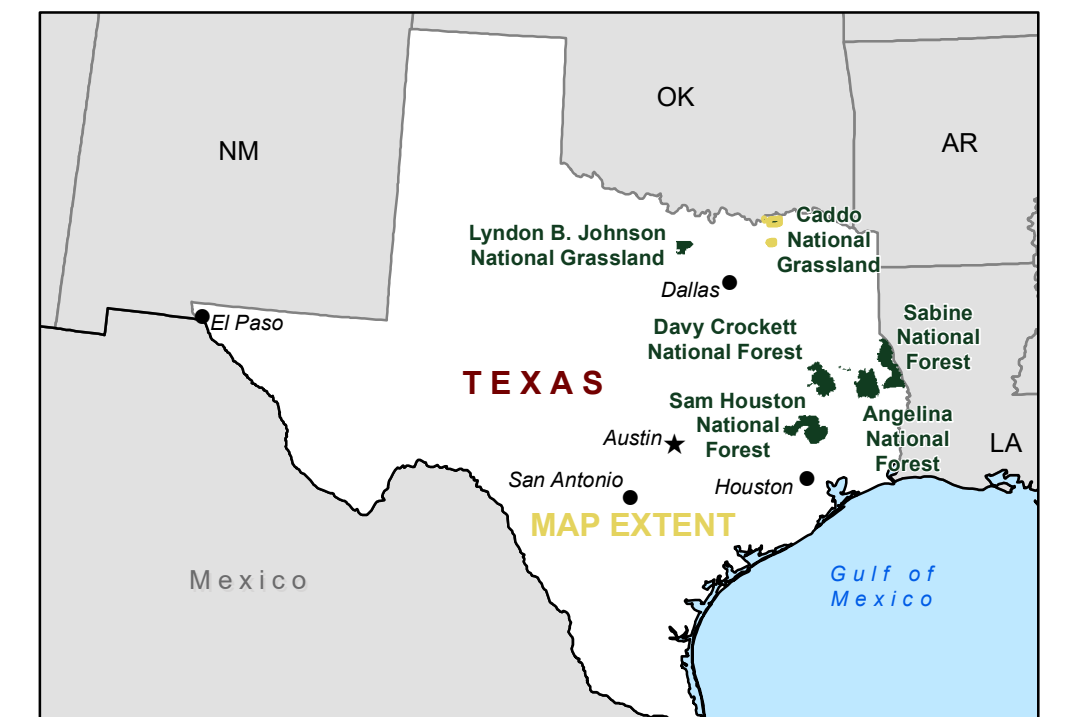
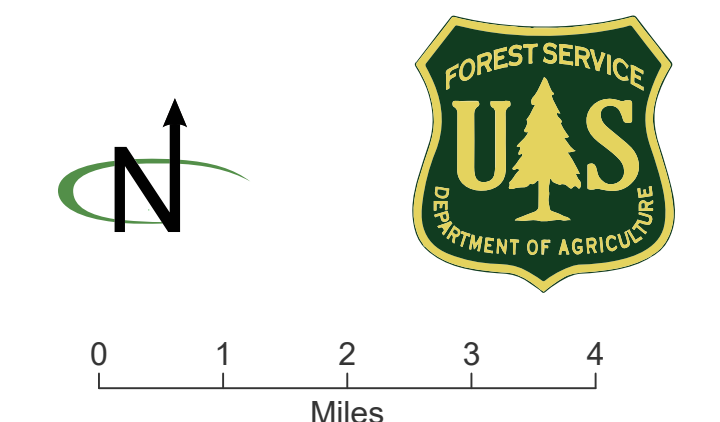


September 21, 2019
 TXOleasing_Scoping_ExistingStipulations_1_V05.pdf
 Source: FS GIS 2018
 This product is reproduced from geospatial information prepared by the USDA, Forest Service, National Forests and Grasslands in Texas. The Forest Service makes no expressed or implied warranty, including warranty of merchantability and fitness, with respect to the character, function, or capabilities of the data or their appropriateness for any user's purposes, and reserves the right to correct, update, modify, or replace this geospatial information without notification.

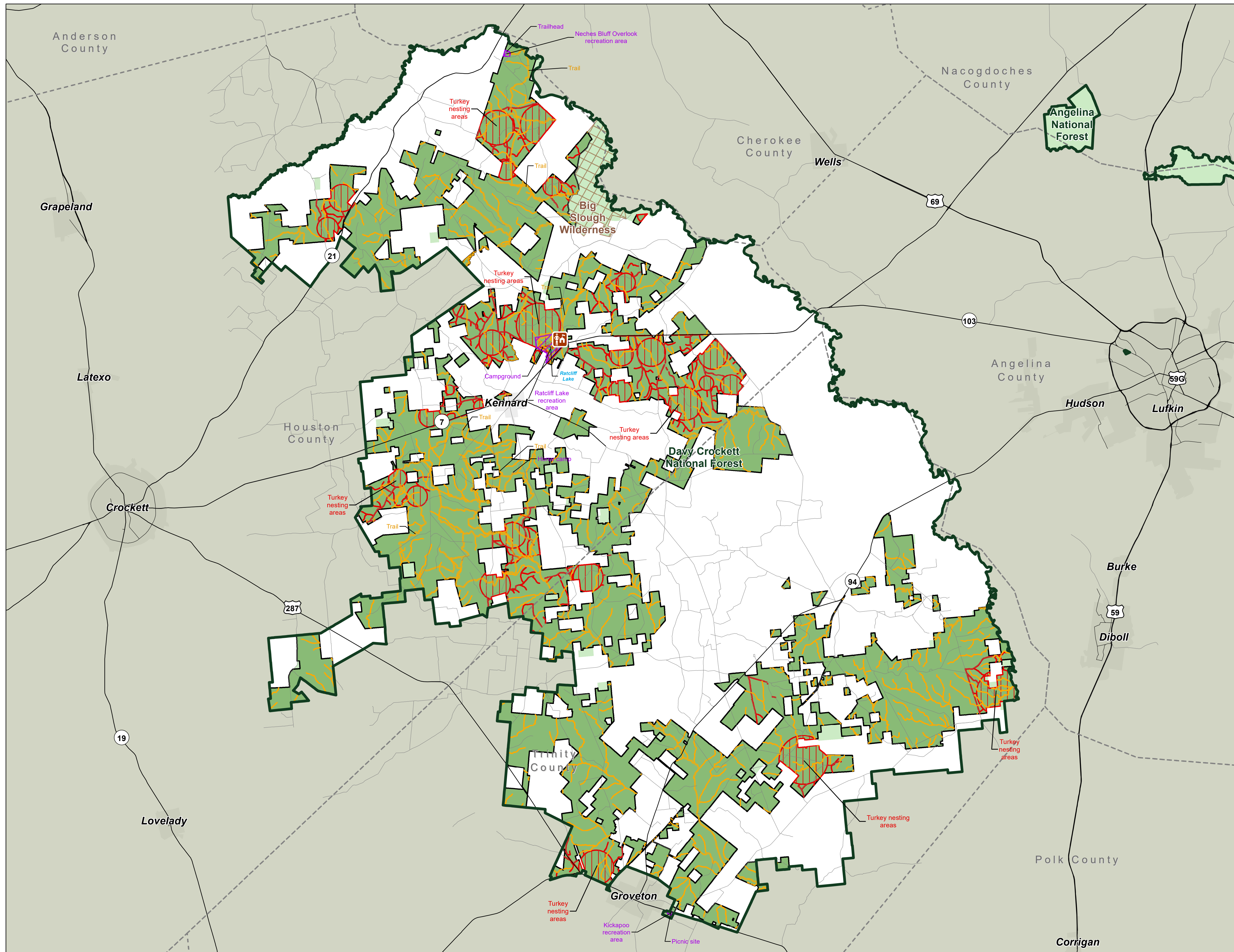


Caddo National Grassland: Existing Stipulations

- No surface occupancy
- Controlled surface use
- Timing limitation
- National Forest or Grassland
- Decision area
- Forest Service surface administration
- Counties

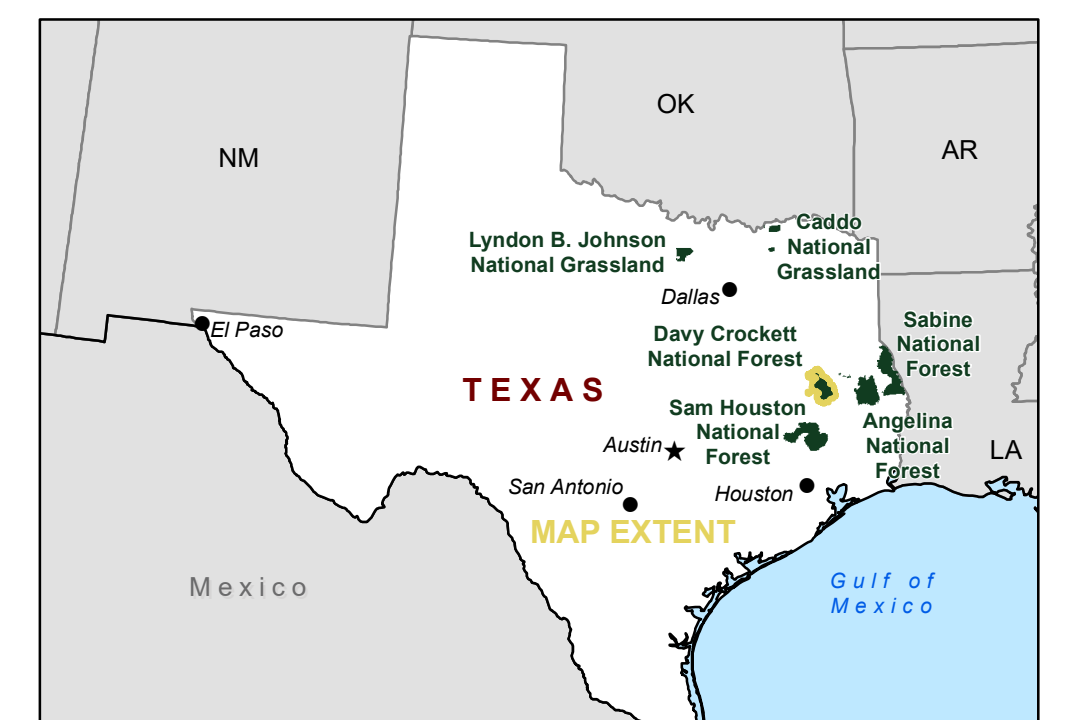
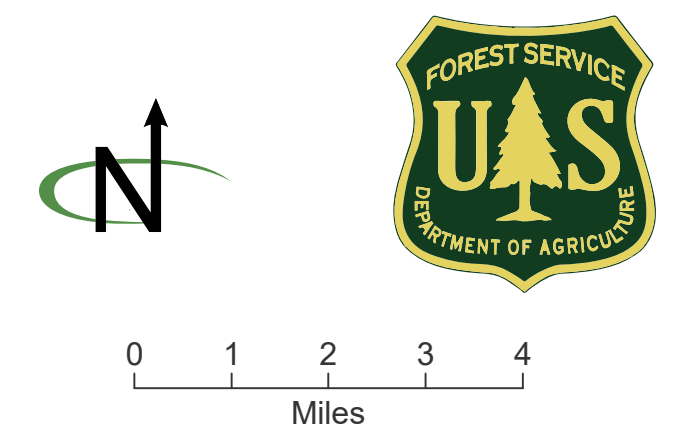


September 21, 2019
 TXOgleasing_Scoping_ExistingStipulations_1_V05.pdf
 Source: FS GIS 2018
 This product is reproduced from geospatial information prepared by the USDA, Forest Service, National Forests and Grasslands in Texas. The Forest Service makes no expressed or implied warranty, including warranty of merchantability and fitness, with respect to the character, function, or capabilities of the data or their appropriateness for any user's purposes, and reserves the right to correct, update, modify, or replace this geospatial information without notification.

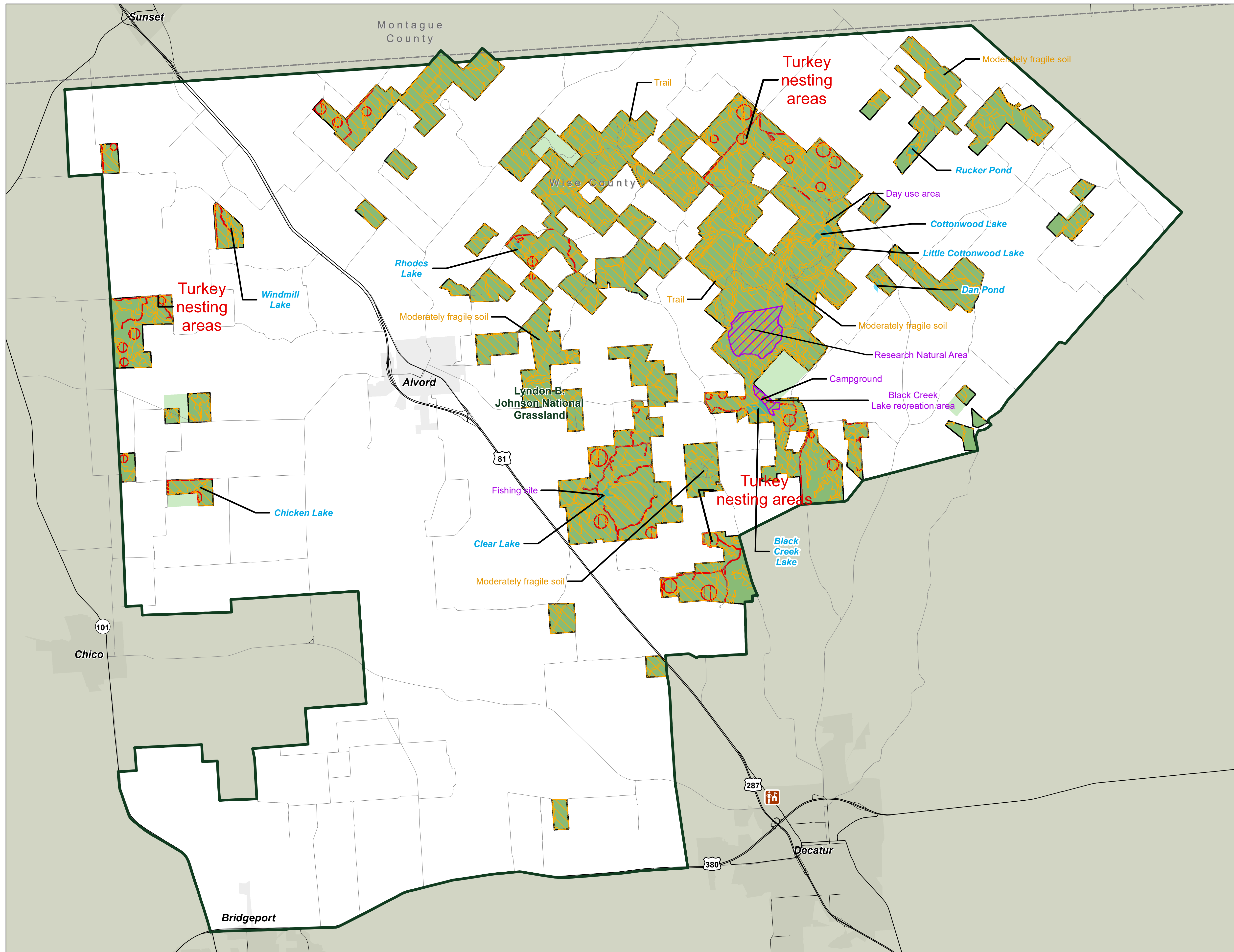


Davy Crockett National Forest: Existing Stipulations

-  No surface occupancy
-  Controlled surface use
-  Timing limitation
-  National Forest or Grassland
-  Decision area
-  Forest Service surface administration
-  Ranger Office
-  Counties
-  Wilderness area

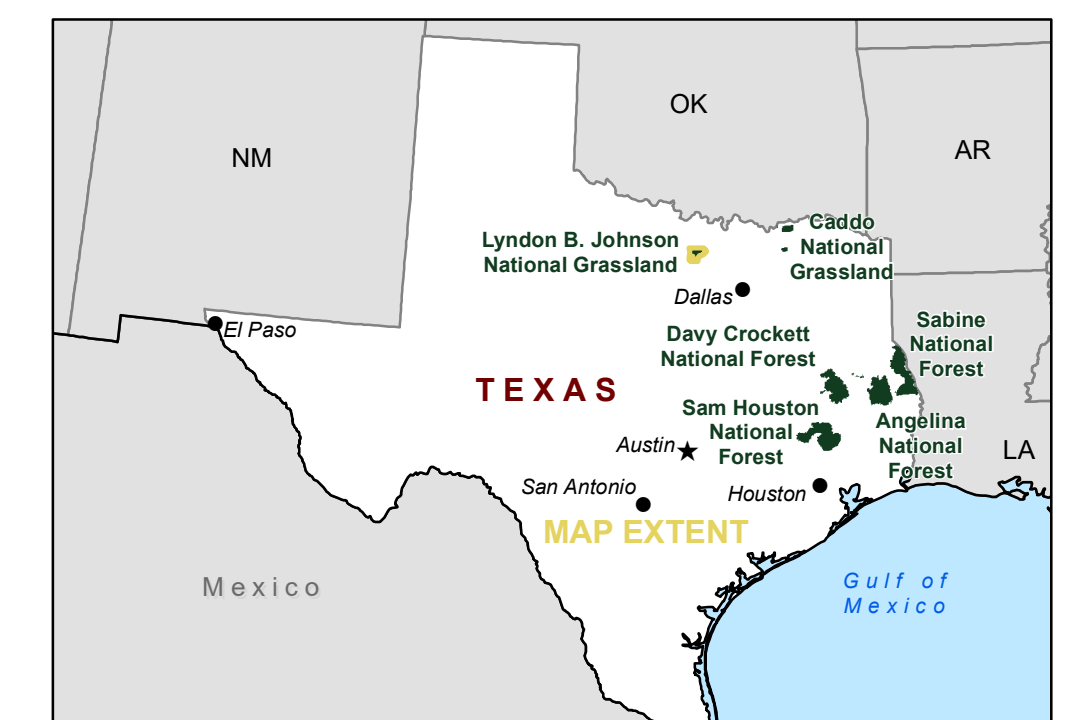
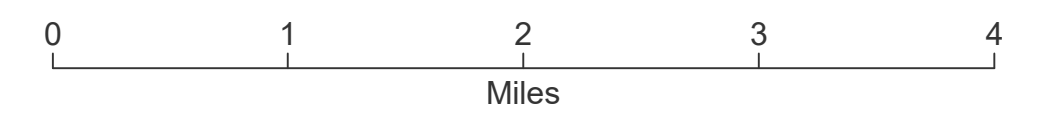


September 21, 2019
 TXOgleasing_Scoping_ExistingStipulations_1_V05.pdf
 Source: FS GIS 2018
 This product is reproduced from geospatial information prepared by the USDA, Forest Service, National Forests and Grasslands in Texas. The Forest Service makes no expressed or implied warranty, including warranty of merchantability and fitness, with respect to the character, function, or capabilities of the data or their appropriateness for any user's purposes, and reserves the right to correct, update, modify, or replace this geospatial information without notification.

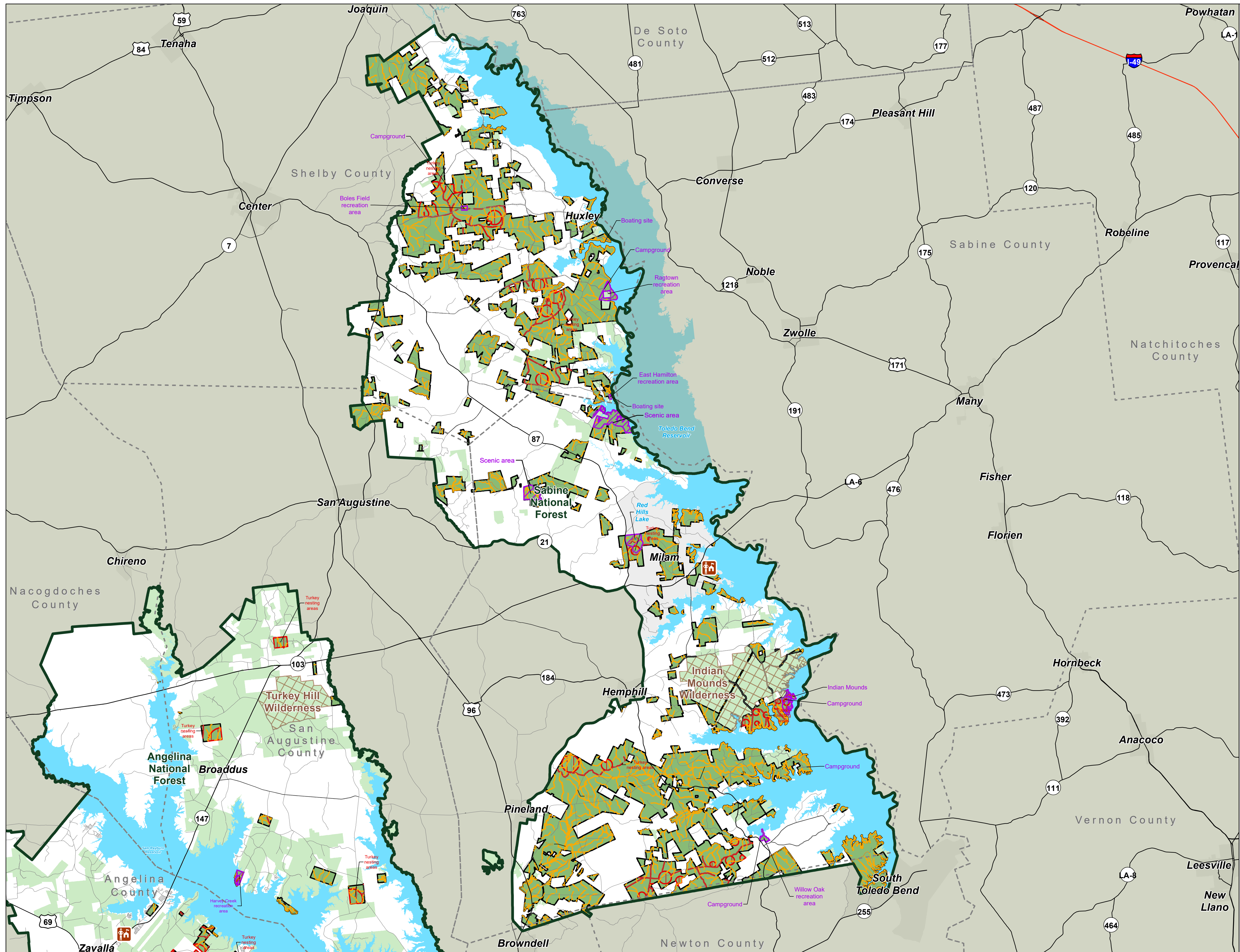


Lyndon B. Johnson National Grassland: Existing Stipulations

- No surface occupancy
- Controlled surface use
- Timing limitation
- National Forest or Grassland
- Decision area
- Forest Service surface administration
- Ranger Office
- Counties

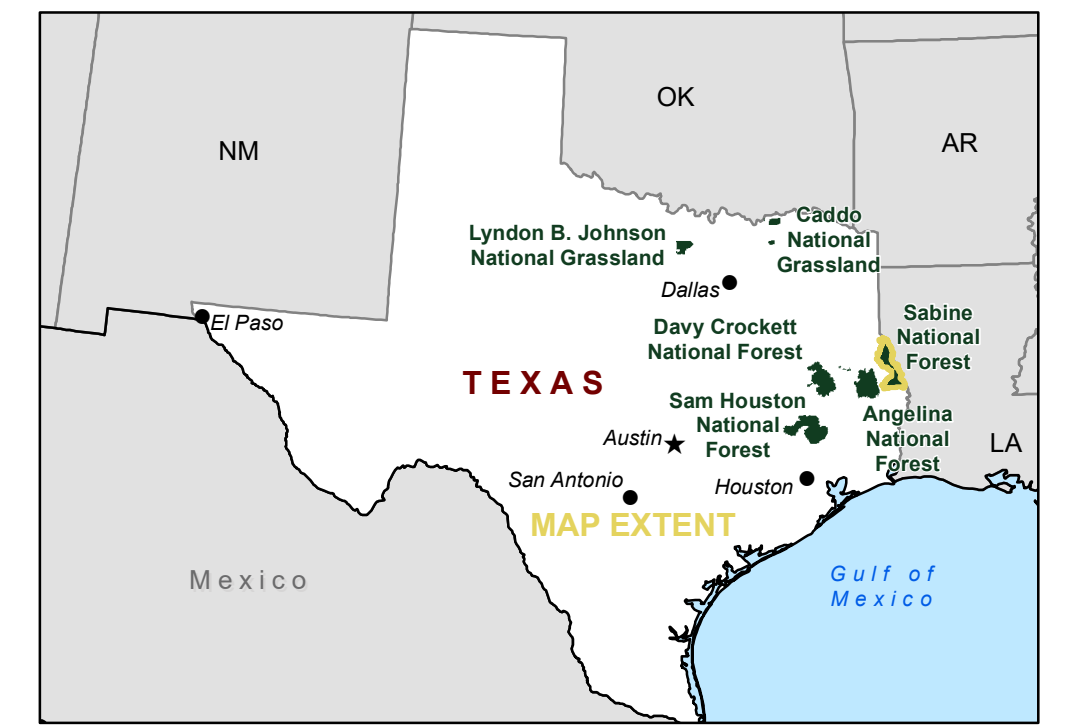
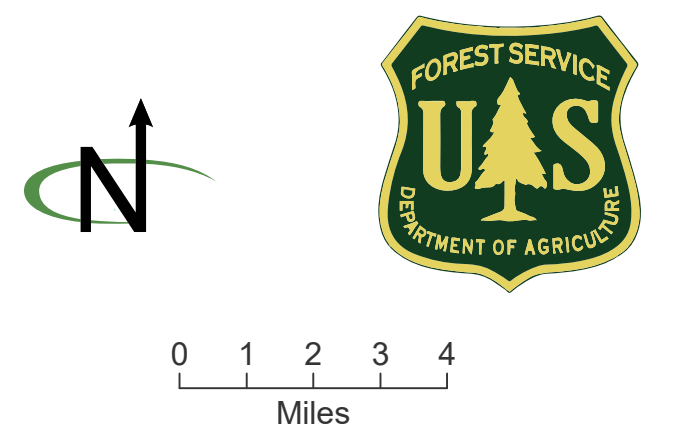


September 21, 2019
 TXOleasing_Scoping_ExistingStipulations_1_V05.pdf
 Source: FS GIS 2018
 This product is reproduced from geospatial information prepared by the USDA, Forest Service, National Forests and Grasslands in Texas. The Forest Service makes no expressed or implied warranty, including warranty of merchantability and fitness, with respect to the character, function, or capabilities of the data or their appropriateness for any user's purposes, and reserves the right to correct, update, modify, or replace this geospatial information without notification.

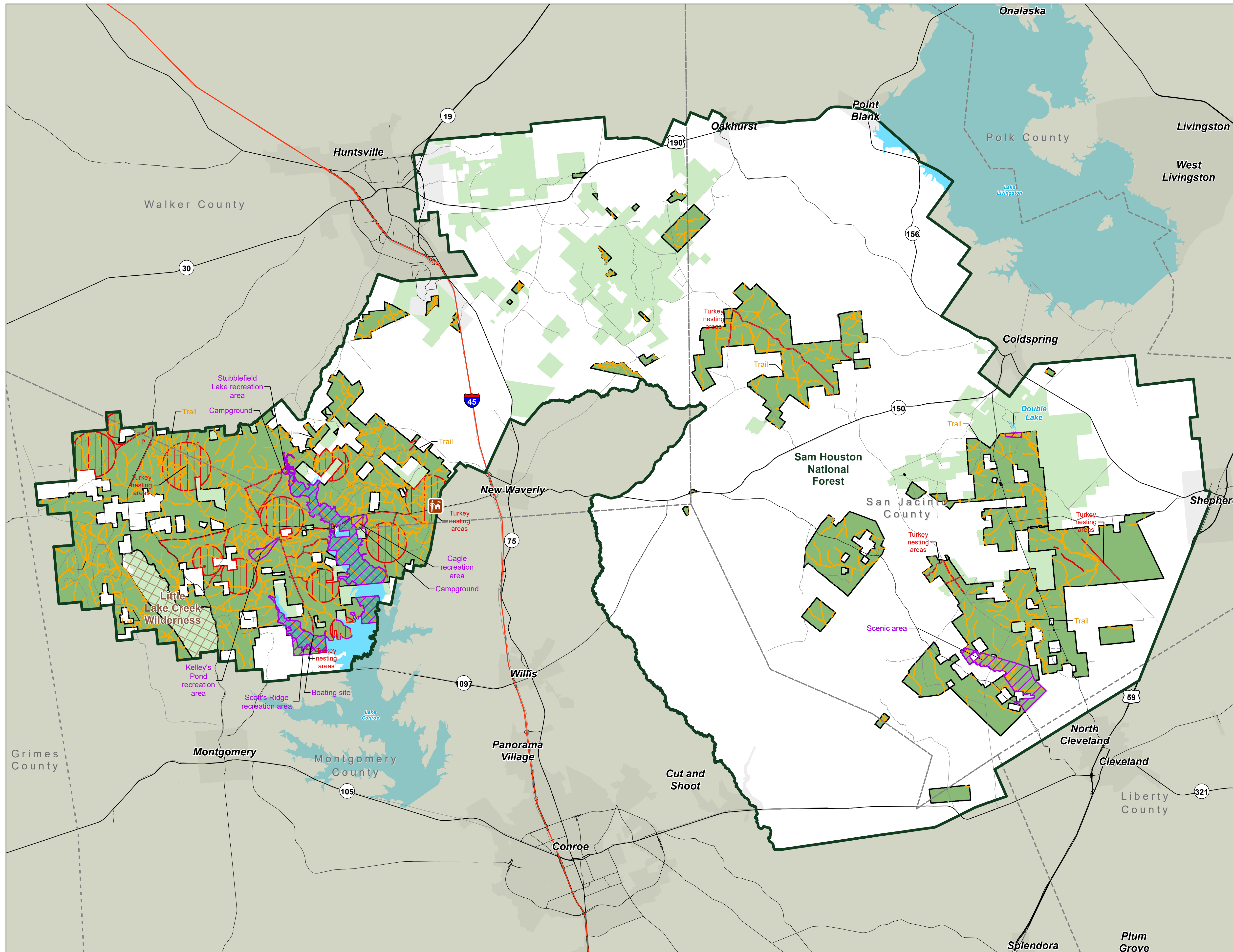


Sabine National Forest: Existing Stipulations

-  No surface occupancy
-  Controlled surface use
-  Timing limitation
-  National Forest or Grassland
-  Decision area
-  Forest Service surface administration
-  Ranger Office
-  Counties
-  Wilderness area

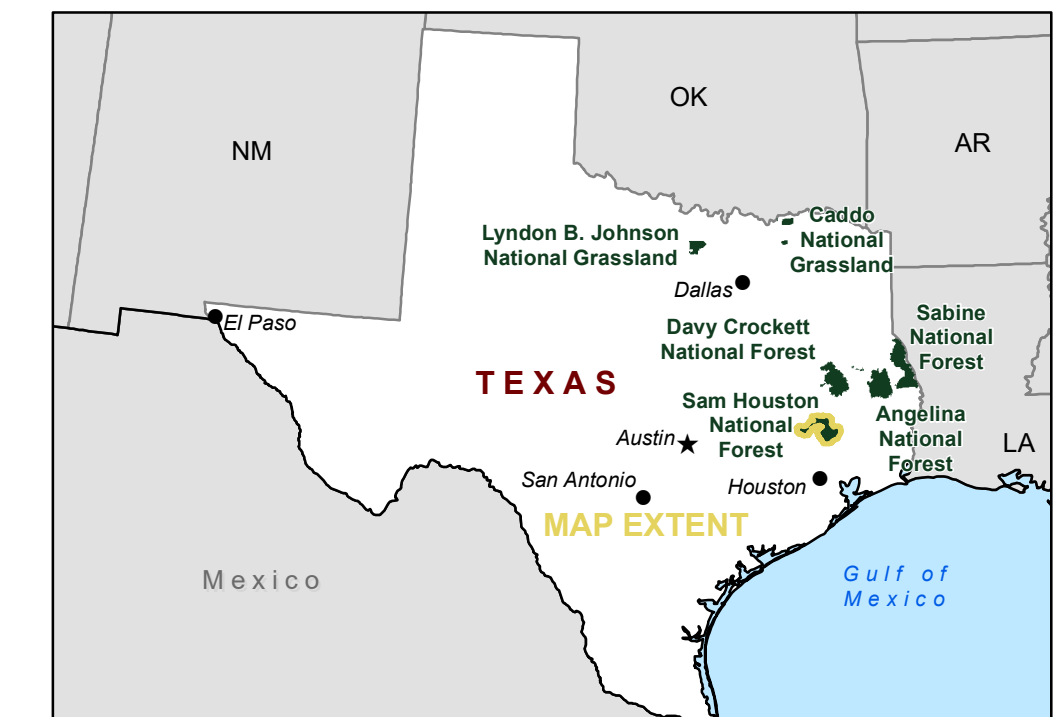
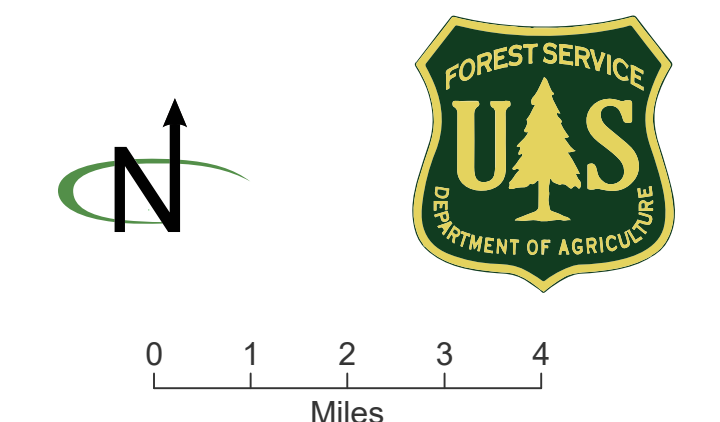


September 21, 2019
 TXOGleasing_Scoping_ExistingStipulations_1_V05.pdf
 Source: FS GIS 2018
 This product is reproduced from geospatial information prepared by the USDA, Forest Service, National Forests and Grasslands in Texas. The Forest Service makes no expressed or implied warranty, including warranty of merchantability and fitness, with respect to the character, function, or capabilities of the data or their appropriateness for any user's purposes, and reserves the right to correct, update, modify, or replace this geospatial information without notification.



Sam Houston National Forest: Existing Stipulations

- No surface occupancy
- Controlled surface use
- Timing limitation
- National Forest or Grassland
- Decision area
- Forest Service surface administration
- Ranger Office
- Counties
- Wilderness area



September 21, 2019
 TXOGleasing_Scoping_ExistingStipulations_1_V05.pdf
 Source: FS GIS 2018
 This product is reproduced from geospatial information prepared by the USDA, Forest Service, National Forests and Grasslands in Texas. The Forest Service makes no expressed or implied warranty, including warranty of merchantability and fitness, with respect to the character, function, or capabilities of the data or their appropriateness for any user's purposes, and reserves the right to correct, update, modify, or replace this geospatial information without notification.