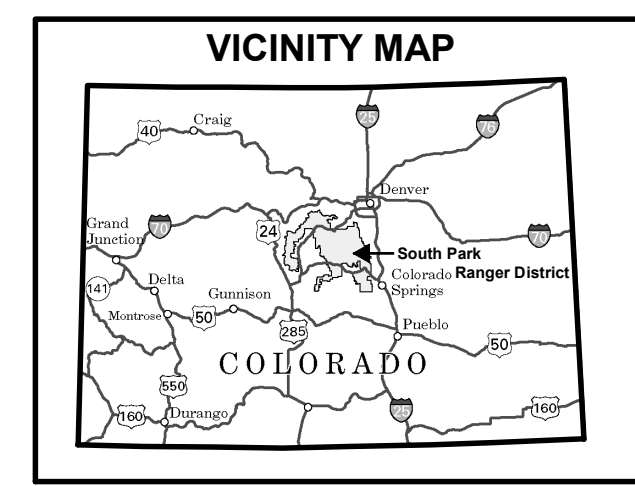


Colorado Forest Service
America's Great Outdoors
Ranger District
South Park
National Forest
Pike
Travel Map



INFORMATION SOURCES

South Park Ranger District
320 Hwy 285
Fairplay, CO 80440
(719) 836-2031

Forest Supervisor
Pike and San Isabel National Forests
Cimarron and Comanche National Crosslands
2840 Kachina Drive
Pueblo, CO 81008
(719) 553-1400

In case of Emergency: Dial 911

South Park Ranger District Website:
<http://www.fs.usda.gov/gotpscc/sopk>

EXPLANATION OF LEGEND ITEMS

Roads Open to Highway Legal Vehicles Only

These roads are open only to motor vehicles licensed under State law for general operation on all public roads within the state.

Roads Open to All Vehicles

These roads are open to all motor vehicles, including smaller off-highway vehicles that may not be licensed for highway use (but not to oversized or overweight vehicles under State traffic law).

Trails Open to Vehicles 50 inches or Less in Width

Trails open only to motor vehicles less than 50 inches in width at the widest point on the vehicle.

Trails Open to Motorcycles Only

These trails are open only to motorcycles. Sidecars are not permitted.

Seasonal Designation

This symbol, used in conjunction with one of the other road or trail symbols, indicates that the road or trail is open only during certain portions of the year. Refer to Seasonal Designations Table for further instructions.

Other Public Roads and Trails

Interstate & Highways, U.S. State, County, Other

Other Public Trails

These symbols are used to show routes the Forest Service does not have jurisdiction over and has not designated for motorized use. These symbols are part of the reference layers showing connectors to towns and cities outside the forest boundary.

Short Route Identifier

This symbol is used for routes that are too short to show a symbol type on the map. The symbol contains the number of the road or trail. Users should refer to the corresponding number in the Short Route Table for designation information.

Motorized Trail Access

This symbol indicates a trailhead for access to a motorized route. Not all motorized routes have trailheads and those that do may range from primitive to developed.

PROHIBITIONS

It is prohibited to possess or operate a motor vehicle on National Forest System lands on the South Park Ranger District other than in accordance with these designations (36 CFR 261.13).

Violators of 36 CFR 261.13 are subject to a fine of up to \$5,000, imprisonment for up to 6 months, or both (18 U.S.C. 3571(e)). This prohibition applies regardless of the presence or absence of signs.

This map does not display non-motorized uses, over-snow vehicles, or other facilities and attractions on the South Park Ranger District. Obtain forest visitor information from the local national forest office.

Designated roads, trails and areas may also be subject to temporary, emergency closures. As a visitor, you must comply with signs notifying you of such restrictions. A national forest may issue an order to close a road, trail or area on a temporary basis to protect the life, health, or safety of forest visitors or the natural or cultural resources in these areas. Such temporary and/or emergency closures are consistent with the Travel Management Rule (36 CFR 212.2 (b); 36 CFR 261 subpart B).

The designation "road or trail open to all motor vehicles" does not supersede State traffic law.

treadlightly!

Travel and recreate with minimum impact.

Respect the environment and the rights of others.

Educate yourself, plan and prepare before you go.

Allow for future use of the outdoors by leaving it better than you found it.

Discover the rewards of responsible recreation.

For more information on Tread Lightly!, go to www.treadlightly.org or call 1-800-966-9900.

PURPOSE AND CONTENTS OF THIS MAP

The designations shown on this motor vehicle travel map (MVTM) were made by the responsible official pursuant to 36 CFR 212.51, are effective as of the date on the front cover of this MVTM, and will remain in effect until superseded by the next year's MVTM.

It is the responsibility of the user to acquire the current travel information. This MVTM is not the official MVTM, yet it shows the National Forest System roads, National Forest System trails, and the areas on National Forest System lands in the South Park Ranger District that are designated for motor vehicle use pursuant to 36 CFR 212.51. This MVTM also identifies the vehicle classes allowed on each route and in each area, and any seasonal restrictions that apply on those routes and in those areas. In addition to showing everything on the MVTM, this MVTM also shows BLM lands and State lands outside the forest boundary plus other information to help navigate on the forest.

Designation of a road, trail, or area for motor vehicle use by a particular class of vehicle under 36 CFR 212.51 should not be interpreted as encouraging or inviting use, or to imply that the road, trail or area is passable, actively maintained, or safe for travel. Motor vehicle designations include parking along designated routes and at facilities associated with designated routes when it is safe to do so and when not causing damage to National Forest System resources.

Seasonal weather conditions and natural events may render designated routes and areas impassable for extended periods. Designated areas may contain roads and trails that may be passable only by high-clearance vehicles or four-wheel drive vehicles. Maintenance of designated roads and trails will depend on available resources, and many may receive little maintenance.

This motor vehicle travel map identifies those roads, trails, and areas designated for the motor vehicle use under 36 CFR 212.51 for the purpose of informing the prohibition of 36 CFR 261.13. This is a limited purpose. The other public roads are shown for information and navigation purposes only and are not subject to designation under the Forest Service travel management regulation.

These designations apply only to National Forest System roads, National Forest System trails, and areas on National Forest System lands.

OPERATOR RESPONSIBILITIES

Operating a motor vehicle on National Forest System roads, National Forest System trails, and in areas on National Forest System lands carries a greater responsibility than operating that vehicle in a city or other developed setting. Not only must you know and follow all applicable traffic laws, you need to show concern for the environment as well as other forest users. The misuse of motor vehicles can lead to the temporary or permanent closure of a designated road, trail, or area. As a motor vehicle operator, you are also subject to State traffic law, including State requirements for licensing, registration, and operation of the vehicle in question.

Motor vehicle use, especially off-highway vehicle use, involves inherent risks that may cause property damage, serious injury, and possibly death to participants. Drive cautiously and anticipate rough surfaces and features, such as snow, mud, vegetation, and water crossings common to remote driving conditions. By your participation, you voluntarily assume full responsibility for these dangers, risks, and dangers. Take care at all times to protect yourself and those under your responsibility.

Much of the South Park Ranger District is remote. Medical assistance may not be readily available. Cellular telephones do not work in many areas of the South Park Ranger District. Take adequate food, water, first aid supplies, and other equipment appropriate for the conditions and expected weather.

ALWAYS REMEMBER TO RESPECT PRIVATE LAND! PROTECT YOUR PRIVILEGE. STAY ON DESIGNATED ROADS AND TRAILS AND IN DESIGNATED AREAS.

Read and understand this map in its entirety. If you have questions, please contact the South Park Ranger District for clarification.

As a motor vehicle operator on a National Forest System road, trail, or area, you must comply with this map, as well as all Federal, State, and local laws and regulations. Compliance with these rules is your responsibility.

LEGEND

- Roads Open to Highway Legal Vehicles
- Roads Open to All Vehicles
- Trails Open to Vehicles 50" or Less in Width
- Trails Open to Motorcycles Only
- Seasonal Designation (See Table)
- Interstate
- Highways, U.S. State, County, Other
- U.S. Highway Route Number
- County Road Number
- Other Public Trails
- Short Route Identifier (See Short Route Table)
- Major Streams
- FS Camarground
- Picnic Area
- Motorized Trailhead
- Non-Motorized Trailhead
- Mountain Peak
- Forest and District Boundary
- National Forest System Lands
- Non-National Forest System Lands within the National Forest
- BLM Lands
- State Lands
- State Wildlife Areas (SWA)
- Wilderness Areas
- County Boundary
- Township and Range Lines
- Section Lines
- Lakes

0 0.5 1 2 3 Miles

BLANKET STATEMENTS FOR TRAVEL MANAGEMENT

Map Revisions

The designations shown on this map will remain in effect until revised with the publication of a new map. In January of each year, this motor vehicle travel map will either be revised with the publication of a new map, or it will be validated for the new year by the Ranger District with a red stamp that says, "Valid for Year 20__"

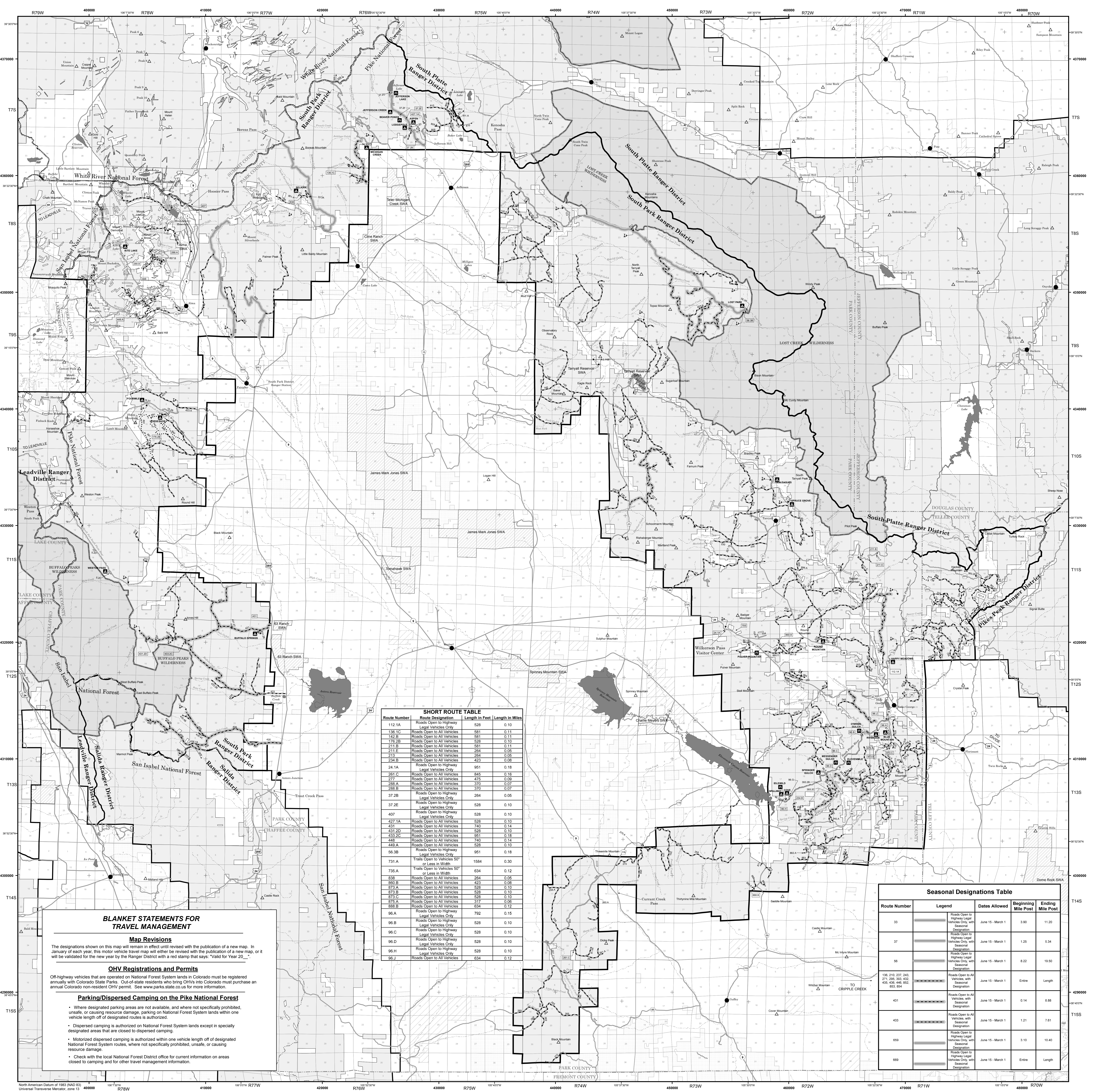
OHV Registrations and Permits

Off-highway vehicles that are operated on National Forest System lands in Colorado must be registered annually with Colorado State Parks. Out-of-state residents who bring OHVs into Colorado must purchase an annual Colorado non-resident OHV permit. See www.parks.state.co.us for more information.

Parking/Dispersed Camping on the Pike National Forest

- Where designated parking areas are not available, and where not specifically prohibited, unsafe, or causing resource damage, parking on National Forest System lands within one vehicle length off of designated routes is authorized.
- Dispersed camping is authorized on National Forest System lands except in specially designated areas that are closed to dispersed camping.
- Motorized dispersed camping is authorized within one vehicle length off of designated National Forest System routes, where not specifically prohibited, unsafe, or causing resource damage.
- Check with the local National Forest District office for current information on areas closed to camping and for other travel management information.

FS-873-0212



SHORT ROUTE TABLE

Route Number	Route Designation	Length in Feet	Length in Miles
112.1A	Roads Open to Highway Legal Vehicles Only	528	0.10
136.TC	Roads Open to All Vehicles	581	0.11
142.B	Roads Open to All Vehicles	581	0.11
175.2B	Roads Open to All Vehicles	528	0.10
211.B	Roads Open to All Vehicles	581	0.11
211.E	Roads Open to All Vehicles	294	0.05
213	Roads Open to All Vehicles	294	0.05
234.B	Roads Open to All Vehicles	423	0.08
24.1A	Roads Open to Highway Legal Vehicles Only	951	0.18
261.C	Roads Open to All Vehicles	845	0.16
277	Roads Open to All Vehicles	475	0.09
285.A	Roads Open to All Vehicles	370	0.07
288.B	Roads Open to All Vehicles	370	0.07
37.2B	Roads Open to Highway Legal Vehicles Only	294	0.05
37.2E	Roads Open to Highway Legal Vehicles Only	528	0.10
407	Roads Open to Highway Legal Vehicles Only	528	0.10
427.1A	Roads Open to All Vehicles	528	0.10
431	Roads Open to All Vehicles	740	0.14
431.2D	Roads Open to All Vehicles	528	0.10
433.2C	Roads Open to All Vehicles	951	0.18
440	Roads Open to All Vehicles	740	0.14
449.A	Roads Open to All Vehicles	528	0.10
56.3B	Roads Open to Highway Legal Vehicles Only	951	0.18
731.A	Trails Open to Vehicles 50" or Less in Width	1584	0.30
735.A	Trails Open to Vehicles 50" or Less in Width	634	0.12
838	Roads Open to All Vehicles	264	0.05
869.B	Roads Open to All Vehicles	423	0.08
870.A	Roads Open to All Vehicles	528	0.10
873.B	Roads Open to All Vehicles	528	0.10
873.C	Roads Open to All Vehicles	528	0.10
875.A	Roads Open to All Vehicles	370	0.07
888.B	Roads Open to All Vehicles	634	0.12
96.A	Roads Open to Highway Legal Vehicles Only	792	0.15
96.B	Roads Open to Highway Legal Vehicles Only	528	0.10
96.C	Roads Open to Highway Legal Vehicles Only	528	0.10
96.D	Roads Open to Highway Legal Vehicles Only	528	0.10
96.H	Roads Open to Highway Legal Vehicles Only	528	0.10
96.J	Roads Open to All Vehicles	634	0.12

Seasonal Designations Table

Route Number	Legend	Dates Allowed	Beginning Mile Post	Ending Mile Post
33	Roads Open to Highway Legal Vehicles Only with Seasonal Designation	June 15 - March 1	3.90	11.20
37	Roads Open to Highway Legal Vehicles Only with Seasonal Designation	June 15 - March 1	1.25	5.34
56	Roads Open to All Vehicles with Seasonal Designation	June 15 - March 1	6.22	16.50
136.210, 217, 243, 271, 295, 303, 432, 430, 434, 464, 662, 853, 854	Roads Open to All Vehicles with Seasonal Designation	June 15 - March 1	Entire	Length
431	Roads Open to All Vehicles with Seasonal Designation	June 15 - March 1	0.14	8.88
433	Roads Open to All Vehicles with Seasonal Designation	June 15 - March 1	1.21	7.61
659	Roads Open to Highway Legal Vehicles Only with Seasonal Designation	June 15 - March 1	3.10	10.40
669	Roads Open to Highway Legal Vehicles Only with Seasonal Designation	June 15 - March 1	Entire	Length