

# CHUGACH NATIONAL FOREST

Seward and Glacier Ranger Districts  
Anchorage, Alaska

Order No. 10-04-00-19-17

## EMERGENCY FOREST ORDER Fire Restrictions

### Temporary Fire Prohibition

Pursuant to Title 36 Code of Federal Regulations 261.50 (a) and (b), the following restrictions are in effect on the Chugach National Forest. These restrictions are in addition to those enumerated in Subpart A, Part 261, Title 36, Code of Federal Regulations. **This order will be in effect from August 20, 2019 and will be terminated when fire danger conditions allow.**

#### Prohibited Acts:

#### 36 CFR 261.52 - Fire

**Building, maintaining, attending, or using a fire, campfire or stove fire including charcoal on the Chugach National Forest as shown in Exhibit A [36 CFR 261.52(a)].**

**Except: This order excludes the Glacier Ranger District's Williwaw Campground, Black Bear Campground, the Nellie Juan/College Fiord Wilderness Study Area, and the Cordova Ranger District as shown in Exhibit A.**

**Except:** The use of portable stoves or lanterns that have a dedicated on/off controller or switch that utilize gas, jellied petroleum or pressurized liquid fuel are allowed.

#### Exceptions:

Pursuant to 36 CFR 261.50(e), the following persons are exempt from this Order:

1. Persons with a permit specifically authorizing the otherwise prohibited act or omission.
2. Any Federal, State or Local Law Enforcement Officer or member of an organized rescue or fire fighting force in the performance of an official duty.

Executed in Anchorage, Alaska, this 20<sup>st</sup> day of August 2019.

*/ Jeff Schramm*

\_\_\_\_\_  
Jeff E. Schramm  
Forest Supervisor  
Chugach National Forest

\_\_\_\_\_  
August 20, 2019

#### Penalty:

Violations of these Prohibitions are punishable by a fine of not more than \$5,000 for an individual or \$10,000 for an organization, or imprisonment for not more than six months or both. [16 U.S.C. 551, and 18 U.S.C. 3559 and 3571]

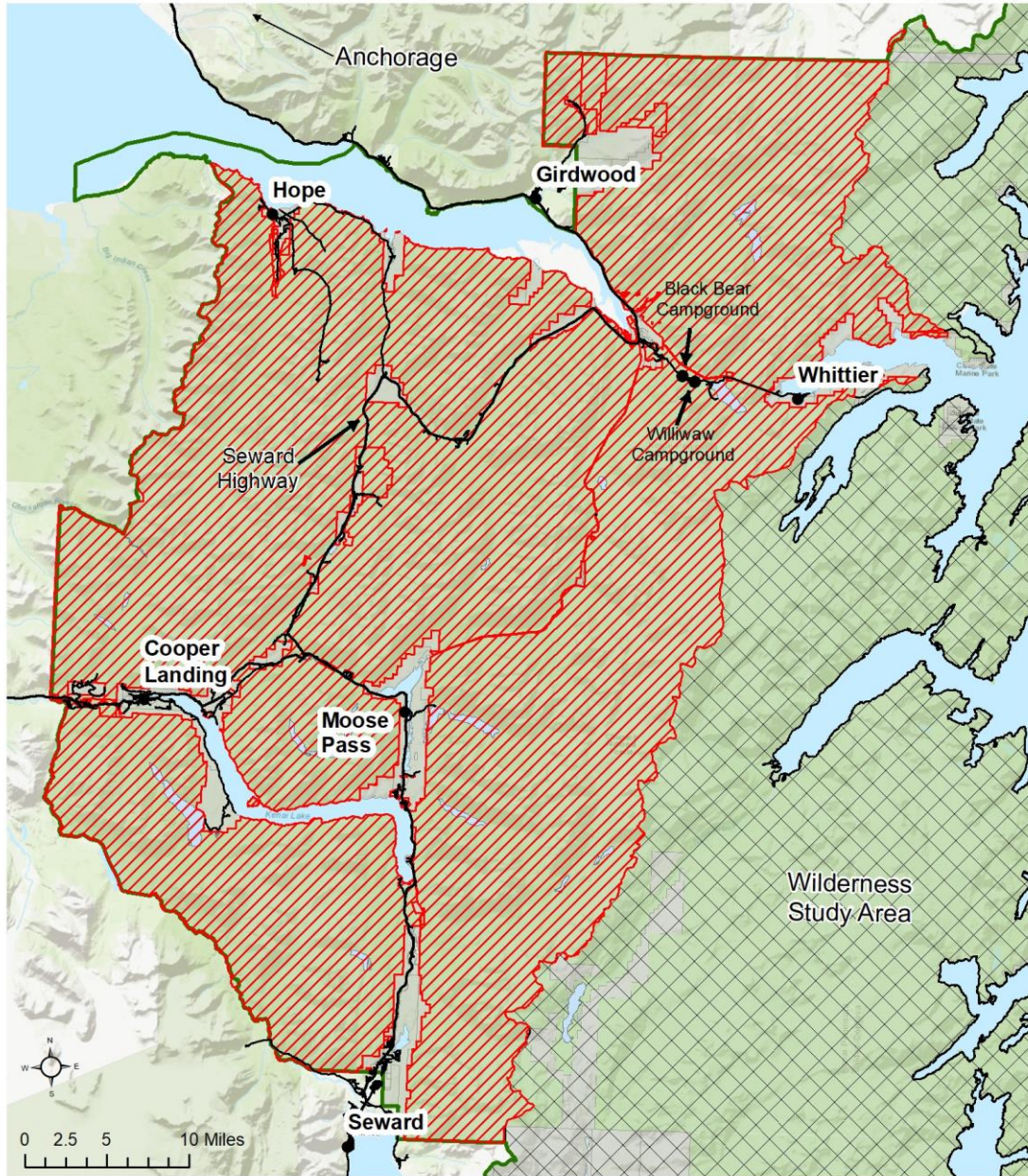
### Exhibit A - Map






This Order applies to the areas depicted in Exhibit A. The restriction area is described as the entirety of the Seward Ranger District and the Glacier Ranger District except Black Bear Campground, Williwaw Campground and the Nellie Juan/College Fiord Wilderness Study Area. The Cordova Ranger District is not included in this order.

## Chugach National Forest Emergency Order for Fire Restrictions

KENAI PENINSULA  
Glacier and Seward Districts

Attachment A



-  Fire Restrictions
-  Roads
-  National Forest
-  Other Ownership
-  Wilderness Study Area

Pursuant to Title 36 Code of Federal Regulations 261.50 (a) and (b), the following restrictions are in effect on all lands administered by the Chugach National Forest on the Seward and Glacier Ranger Districts. These restrictions are in addition to those enumerated in Subpart A, Part 261, Title 36, Code of Federal Regulations, and become effective when signed and will remain in effect until rescinded.