




SW Area — SE Face of the Cabinet Mountains Wilderness, Libby Creek, Bear Creek, Silver Butte

| Trail No. | Trail Name | Miles | Elevation Change | Attraction | Trail Head Access Rd. |
|-----------|-------------------------------|-------|------------------|-------------|-----------------------|
| 5 | Fisher Divide SW AREA | 11.9 | 1000' | Fisher Mtn | 6740 |
| 6N | Divide Trail 6 (Kenelty) | 14.55 | 2834' | | 99760D |
| 6S | Divide Trail 6 (Silver Butte) | 11.22 | 2369' | Barren Peak | 99810 |
| 63 | Divide Cutoff | 3.26 | 1948' | | TR3605 |
| 110 | Jumbo Peak | 2.49 | 2313' | | 148 |
| 113 | Iron Meadows | 4.15 | 1160' | | 99812 |
| 114 | Silver Dollar | 4.18 | 880' | | 6748 |
| 115 | Fourth of July | 2.91 | 1430' | | 2332 |
| 116 | Standard Creek | 4.95 | 2906' | | 6745 |
| 117 | Great Northern Mtn | 3.14 | 440' | | 4779 |
| 118 | Miller Creek | 2.81 | 1000' | | 4780 |
| 119 | Libby Creek | 2.5 | 400' | | 2316 |
| 121 | Swamp Creek | 1.1 | 840' | | 47206 |
| 123 | Leckrone Creek | 1.19 | 560' | | 99329 |
| 125 | Snowshoe Pipeline | 0.57 | 549' | | 6213 |
| 129 | Poorman Creek | 4.77 | 2000' | | 2317 |
| 130 | Brulee Creek | 2.57 | 2360' | | 99761 |
| 131 | Big Cherry Creek | 3.15 | 280' | | 4785 |
| 132 | Leigh Lake | 1.52 | 1104' | Lake | 4876 |
| 178 | Bear Lakes | 2.82 | 2120' | Lake | 8910 |
| 288 | Smoke Creek | 1.14 | 920' | | 6732 |
| 293 | Waloven/Himes | 12.7 | 2422' | | 148 |
| 293A | Waloven Tie | 1.28 | 32' | | 148/TR293 |
| 295 | Silver Butte Ridge | 3.37 | 268' | | TR293A |
| 296 | Silver Butte Creek | 3.24 | 2000' | | 594 |
| 297 | Trapper Creek | 3.06 | 905' | | 148 |
| 298 | Porcupine Creek | 3.44 | 1880' | | 148 |
| 299 | Barren Peak | 2.6 | 2000' | Lookout | 231 |
| 300 | Teeters Peak | 2.28 | 733' | | 4724 |
| 301 | Gloria Mine | 1.39 | 1147' | | 6746 |
| 302 | Mill/Ozette | 2.04 | 1050' | Lake | 6746 |

SW Area — SE Face of the Cabinet Mountains Wilderness, Libby Creek, Bear Creek, Silver Butte

| Trail No. | Trail Name | Miles | Elevation Change | Attraction | Trail Head Access Rd. |
|-----------|-------------------------|-------|------------------|------------|-----------------------|
| 360E | Cabinet Divide East | 11.07 | 2252' | | 594 |
| 360S | Cabinet Divide South | 5.43 | 450' | | 594 |
| 415 | Olson Creek | 3.33 | 1040' | | 148 |
| 466 | Allen Peak | 4.69 | 2600' | | 148 |
| 471 | McKay Mountain | 1.3 | 2400' | | TR131 |
| 489 | Baree Creek | 3.28 | 2160' | Lake | 148 |
| 505 | North Fork Miller Creek | 3.05 | 2100' | | 385 |
| 506 | Miller Ridge | 4.66 | 200' | | 385 |
| 532 | Porcupine Ridge | 3.89 | 1920' | | 148 |
| 536 | Blacktail Loop | 7.41 | 200' | | TR293 |
| 656 | Lake Creek | 3.81 | 2180' | Geiger Lks | 6748 |
| 658 | Bramlet Creek | 2.06 | 997' | Lake | 2332 |
| 662 | Kenelty Vista | 1.68 | 544' | | TR130 |
| 716 | Libby Divide | 6.73 | 1520' | Horse Mtn | 4724 |
| 815 | Wayup Mine | 1.39 | 1000' | | 6746 |
| 820 | Ramsey Creek | 3.04 | 598' | | 4781 |
| 821 | Cable Creek | 3.21 | 1045' | | 4784 |
| 823 | Howard Lake | 1.64 | 119' | | 4779 |

-  Cabinet Mountains Wilderness trail
-  Motorized Trail - Refer to the MVUM for current designations
-  Connecting Trail— add additional mileage

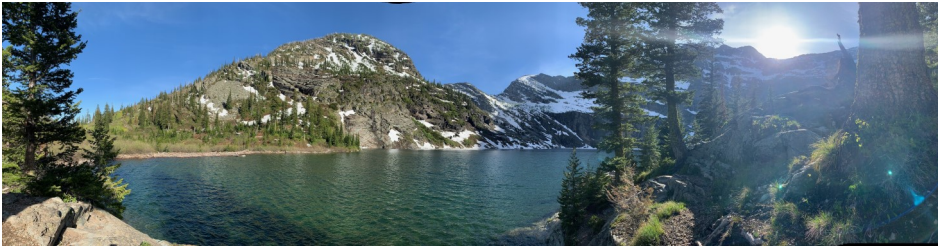


this
is **BEAR**
COUNTRY

From March 1 through December 1
Food, garbage and other attractants must be
acceptably attended or stored on the
Kootenai National Forest

NE AREA—East of Lake Koocanusa, Wolf Creek Area

| Trail No. | Trail Name | Miles | Elevation Change | Attraction | Trail Head Access Rd. |
|-----------|---------------------------|-------|------------------|------------|-----------------------|
| 25 | Dunn Creek | 6.05 | 1676' | | 525 |
| 97 | Richards Mountain | 7.37 | 960' | | 4596 |
| 97S | Cody Lakes | 0.31 | 30' | | 4596 |
| 99 | Calx Mountain | 4.77 | 2640' | Lookout | 6823H |
| 127 | Weigel Creek | 5.13 | 640' | | 6790 |
| 128 | Weigel Mountain | 8 | 960' | | 6834 |
| 138 | Grubb Mountain | 2.79 | 1360' | | 760 |
| 138A | Lemonade Spring | 0.99 | 100' | | TR138 |
| 172 | Flathead/ Kootenai Divide | 15.56 | 2134' | | TR138A |
| 230 | Horse Hill | 1.71 | 1203' | | 4409 |
| 241 | North Fork Canyon Creek | 3.71 | 1840' | | 4908 |
| 242 | Sugarloaf Lookout | 4.18 | 880' | | 4912 |
| 279 | Warland Ridge | 10.66 | 2120' | | 4891 |
| 280 | Warland Peak Lookout | 2.12 | 750' | Lookout | 4898 |
| 281 | Cripple Horse | 6.22 | 2160' | | 4904 |
| 356 | Ziegler Mountain | 2.21 | 1674' | Lookout | 863-2 |
| 420 | Canyon Divide | 9.83 | 440' | | 4912 |
| 425 | Boundary Mountain | 0.66 | 600' | | 4904 |
| 426 | South Fork Fivemile | 1.82 | 80' | | 6277 |
| 500 | Hornet Ridge | 5.69 | 800' | | 4913 |
| 642 | Wolf Mountain | 2.93 | 630' | | 2348 |
| 682 | Yarnell Island | 0.55 | 65' | | Boat |



Leigh Lake photo by Kindra Lima-Hageness 6-5-19

Cabinet Mountains Wilderness

was designated in 1964 with the signing of the Wilderness Act. The CMW comprises 94,272 acres in Lincoln and Sanders Counties. When visiting the CMW always practice Leave No Trace techniques, and remember it is prohibited to travel in groups of more than 8 persons.

NW Area— East Face of the Cabinet Mountains Wilderness , West of the Reservoir, Fisher River, Tony Peak and Pipe Creek Area

| Trail No. | Trail Name | Miles | Elevation Change | Attraction | Trail Head Access Rd. |
|-----------|----------------------------------|-------|------------------|------------|-----------------------|
| 375 | Bobtail Ridge | 8.44 | 160' | | 6704 |
| 376 | Sheldon Mountain 376A - 376L | 25.6 | 2000' | Horse/Bike | 68 |
| 383 | Grambauer Ridge | 2.09 | 501' | | TR649 |
| 383A | Grambauer Ridge Tie | 2.23 | 1611' | | TR141 |
| 387 | Flatiron Summit | 2.38 | 1320' | | 68 |
| 390 | Flatiron Ridge | 2.25 | 1480' | | 4723 |
| 406 | Mount Tom | 4.08 | 1760' | | 332 |
| 467 | Tony Peak | 2.08 | 880' | | 55314 |
| 512 | Rainy Divide Loop/Canoe Gulch | 4.13 | 2666' | | TR12S |
| 582 | Jennings Tote | 1.72 | 1440' | Historic | 759 |
| 649 | Scenery Mountain | 4.51 | 3466' | | 141 |
| 814 | Tom Poole Lake | 0.48 | 340' | Lake | 68 |
| 817 | Parmenter Flat | 1.58 | 40' | | 280 |
| 822 | Banfield Ridge | 3.17 | 840' | | TR 70 |
| 824 | Timberlane A-B | 2.22 | 134' | Loop | 68 |
| 825 | Rainbow Lake | 0.24 | 66' | Lake | 4712 |
| 826 | Gold Hill Divide | 4.87 | 80' | | TR 226 |
| 2000 | Kootenai Falls | 0.5 | 92' | Waterfall | Hwy 2 |
| 2001 | Swinging Bridge | 0.3 | 24' | River | TR 2000 |

The 7 Principles

1. Plan Ahead & Prepare
2. Travel & Camp on Durable Surface:
3. Dispose of Waste Properly
4. Leave What You Find
5. Minimize Campfire Impacts
6. Respect Wildlife
7. Be Considerate of Other Visitors

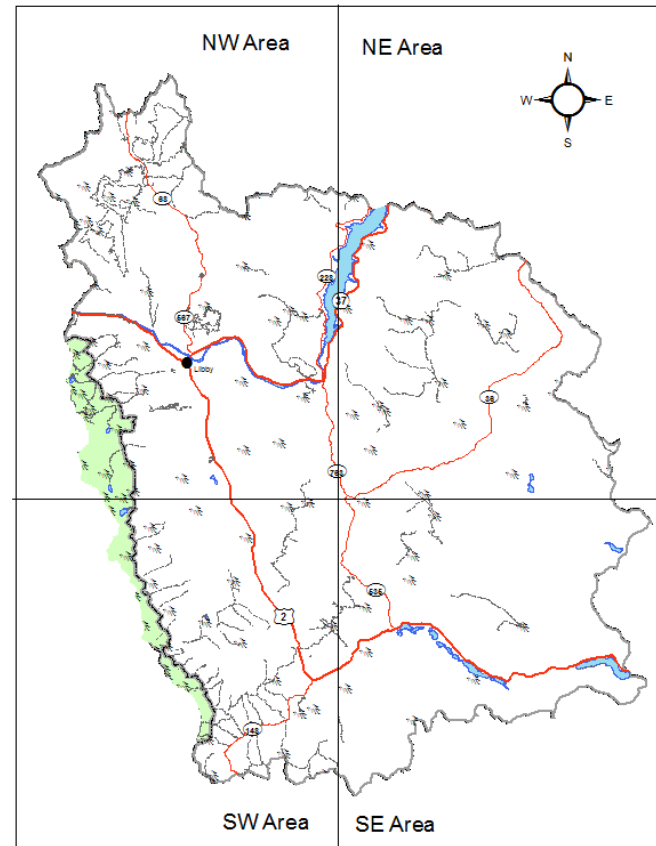


NW Area— East Face of the Cabinet Mountains Wilderness , West of the Reservoir, Fisher River, Tony Peak and Pipe Creek Area

| Trail No. | Trail Name | Miles | Elevation Change | Attraction & Info. | Trail Head Access Rd. |
|-----------|---------------------------|-------|------------------|--------------------|-----------------------|
| 2E | Historic Hwy 2 East | 2.19 | 394' | Historic | Hwy 2 |
| 7 | Purcell/Lost Horse | 7.82 | 512' | | 4716 |
| 12 N | Pipe Divide | 5.32 | 1800' | | 336 |
| 12S | Rainy Divide | 13.79 | 1285' | | Hwy 37 |
| 12W | Blue Mountain | 2.38 | 1080' | Lookout | 755 |
| 13 | Skyline NRT | 7.07 | 3469' | O'Brien Mtn | 4690 |
| 14 | Indian Head | 3.45 | 3640' | | 128 |
| 15 | Parmenter Tie | 1.97 | 1000' | | 128 |
| 16 | Flower Lake/Lookout | 0.95 | 511' | | 128 |
| 42 | Bighorn/Black Eagle Rock | 4.12 | 40' | | 853 |
| 43 | China Rim/ Flagstaff | 6.95 | 1440' | | 4690 |
| 47 | Bobtail | 3.13 | 1270' | | 4613 |
| 49 | Turner Mountain | 6.57 | 2806' | | 68 |
| 70 | Giebler/ Lost Soul Divide | 10.9 | 3068' | | TR822 |
| 126 | Fawn Creek | 3.16 | 2080' | | 534B |
| 134 | Flower Bypass | 2.05 | 425' | | 618 |
| 135 | Hanging Valley | 2.75 | 2000' | Lake | TR137 |
| 136 | Granite Creek | 6.3 | 1480' | Lake | 618 |
| 137 | Flower Creek | 6.01 | 2400' | Sky Lakes | 128 |
| 139 | North Fork Parmenter | 2.75 | 1870' | | TR140 |
| 140 | Parmenter Creek | 6.44 | 1547' | Minor Lake | 280 |
| 141 | Cedar Creek | 5.45 | 3040' | Lake | 402 |
| 158 | Hemlock Ridge | 3.99 | 2880' | | 471 |
| 213 | Quartz Mountain | 1.51 | 735' | Lookout | 4654 |
| 225 | Upper Pipe | 3.97 | 980' | | 68 |
| 226 | Shafer/Big Creek Baldy | 7.8 | 2840' | Lookout | 68 |
| 261 | Hickey Creek | 5.03 | 1600' | | 4874 |
| 263 | Noisy Creek | 4.14 | 2080' | | 68 |
| 270 | Alexander Mountain | 4.26 | 1960' | | 228 |
| 316 | Norman Mountain | 3.39 | 2360' | | 4728 |
| 317 | Minor Lake | 3.75 | 2310' | | TR140 |
| 322 | Williams Cr/Grambauer | 3.77 | 4221' | | Hwy 2 |
| 360N | Cabinet Divide North | 8.61 | 400' | Dome Mtn | TR141 |

SE Area— Chain of Lakes, Kenelty Mountain, Meadow Peak

| Trail No. | Trail Name | Miles | Elevation Change | Attraction | Trail Head Access Rd. |
|-----------|-------------------------|-------|------------------|------------|-----------------------|
| 6E | Divide Trail 6 (Satire) | 5.86 | 2065' | | 762 |
| 24 | Barnum Creek | 8.17 | 2958' | | 522 |
| 60 | McGregor Shoreline | 2.9 | 108' | | Cmpgrnd |
| 104 | Kenelty Mountain | 2.35 | 1740' | | 99740A |
| 108 | Houghton/Colonite | 2.7 | 80' | Historic | 6777 |
| 286 | Satire Mountain | 0.82 | 80' | | TR6 |
| 442 | Slimmer Creek | 3 | 1875' | | 511 |
| 689 | Fritz Mountain | 1.17 | 430' | | TR6N |
| 699 | Cow Creek | 1.96 | 1720' | | 762 |
| 858 | Marl Creek | 3.87 | 1960' | | 2398 |
| 858A | Marl Creek Tie | 0.97 | 523' | | 6824C |
| 859 | Kenelty Caves | 0.79 | 617' | | 6753 |



Libby Ranger District

Trail Guide

KOOTENAI NATIONAL FOREST

Vast in Nature, Uncrowded by Design



Scan QR code for current trail reports or visit www.fs.usda.gov/kootenai for more information on a specific trails in the area.



For more Information
Contact:
Libby Ranger District
12557 Hwy 37
Libby, Montana 59923
(406) 293-7773

The USDA is an equal opportunity provider and employer

