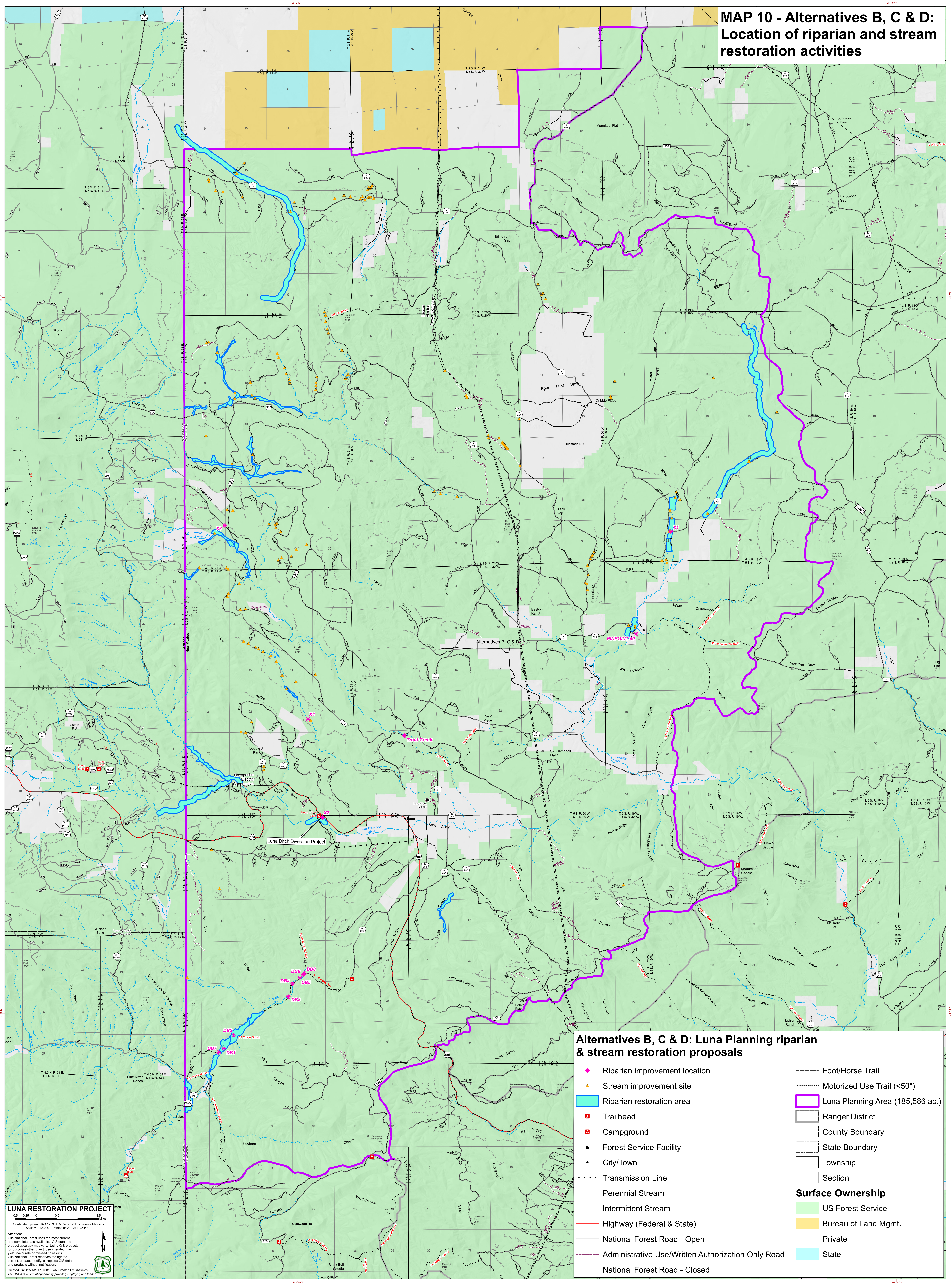


# MAP 10 - Alternatives B, C & D: Location of riparian and stream restoration activities



## Alternatives B, C & D: Luna Planning riparian & stream restoration proposals

- \* Riparian improvement location
  - ▲ Stream improvement site
  - Riparian restoration area
  - Trailhead
  - Campground
  - ▶ Forest Service Facility
  - City/Town
  - Transmission Line
  - Perennial Stream
  - - - Intermittent Stream
  - Highway (Federal & State)
  - National Forest Road - Open
  - Administrative Use/Written Authorization Only Road
  - National Forest Road - Closed
  - Foot/Horse Trail
  - Motorized Use Trail (<50")
  - Luna Planning Area (185,586 ac.)
  - Ranger District
  - County Boundary
  - State Boundary
  - Township
  - Section
- Surface Ownership**
- US Forest Service
  - Bureau of Land Mgmt.
  - Private
  - State

**LUNA RESTORATION PROJECT**  
Scale = 1:100,000 Printed on 4/18/17  
Coordinate System: NAD 1983 UTM Zone 12N Transverse Mercator  
Scale = 1:100,000 Printed on 4/18/17  
Attention: Gap National Forest uses the most current and complete data available. GIS data and product accuracy may vary. Using GIS products for purposes other than those intended may yield inaccurate or misleading results. Gap National Forest reserves the right to correct, update, modify, or replace GIS data and products without notification.  
Created On: 12/1/2017 9:08:50 AM Created By: khawlos  
The USDA is an equal opportunity provider, employer, and funder.