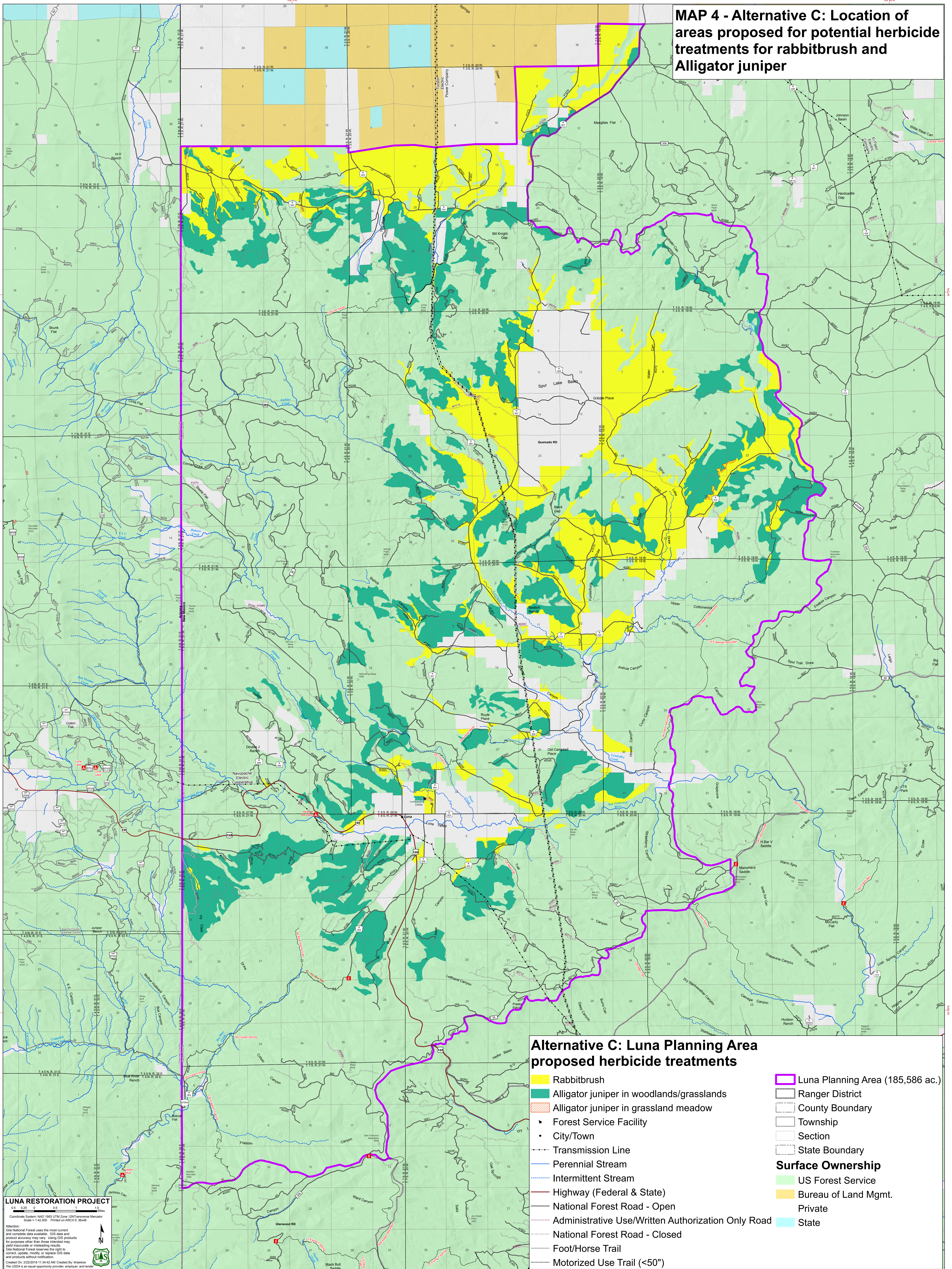


MAP 4 - Alternative C: Location of areas proposed for potential herbicide treatments for rabbitbrush and Alligator juniper



Alternative C: Luna Planning Area proposed herbicide treatments

- Rabbitbrush
 - Alligator juniper in woodlands/grasslands
 - Alligator juniper in grassland meadow
 - Forest Service Facility
 - City/Town
 - Transmission Line
 - Perennial Stream
 - Intermittent Stream
 - Highway (Federal & State)
 - National Forest Road - Open
 - Administrative Use/Written Authorization Only Road
 - National Forest Road - Closed
 - Foot/Horse Trail
 - Motorized Use Trail (<50")
 - Luna Planning Area (185,586 ac.)
 - Ranger District
 - County Boundary
 - Township
 - Section
 - State Boundary
- Surface Ownership**
- US Forest Service
 - Bureau of Land Mgmt.
 - Private
 - State

LUNA RESTORATION PROJECT

Scale: 1:42,000 (Printed on ARCHIVE BOARD)

Coordinate System: NAD 1983 UTM Zone 12N Transverse Mercator

Attention: GIS National Forest uses the most current and complete data available. GIS data and product accuracy may vary. Using GIS products for purposes other than those intended may yield inaccurate or misleading results. GIS National Forest reserves the right to correct, update, modify, or replace GIS data and products without notification.

Created On: 2/22/2018 11:34:42 AM Created By: khawkes

The USDA is an equal opportunity provider, employer, and vendor.