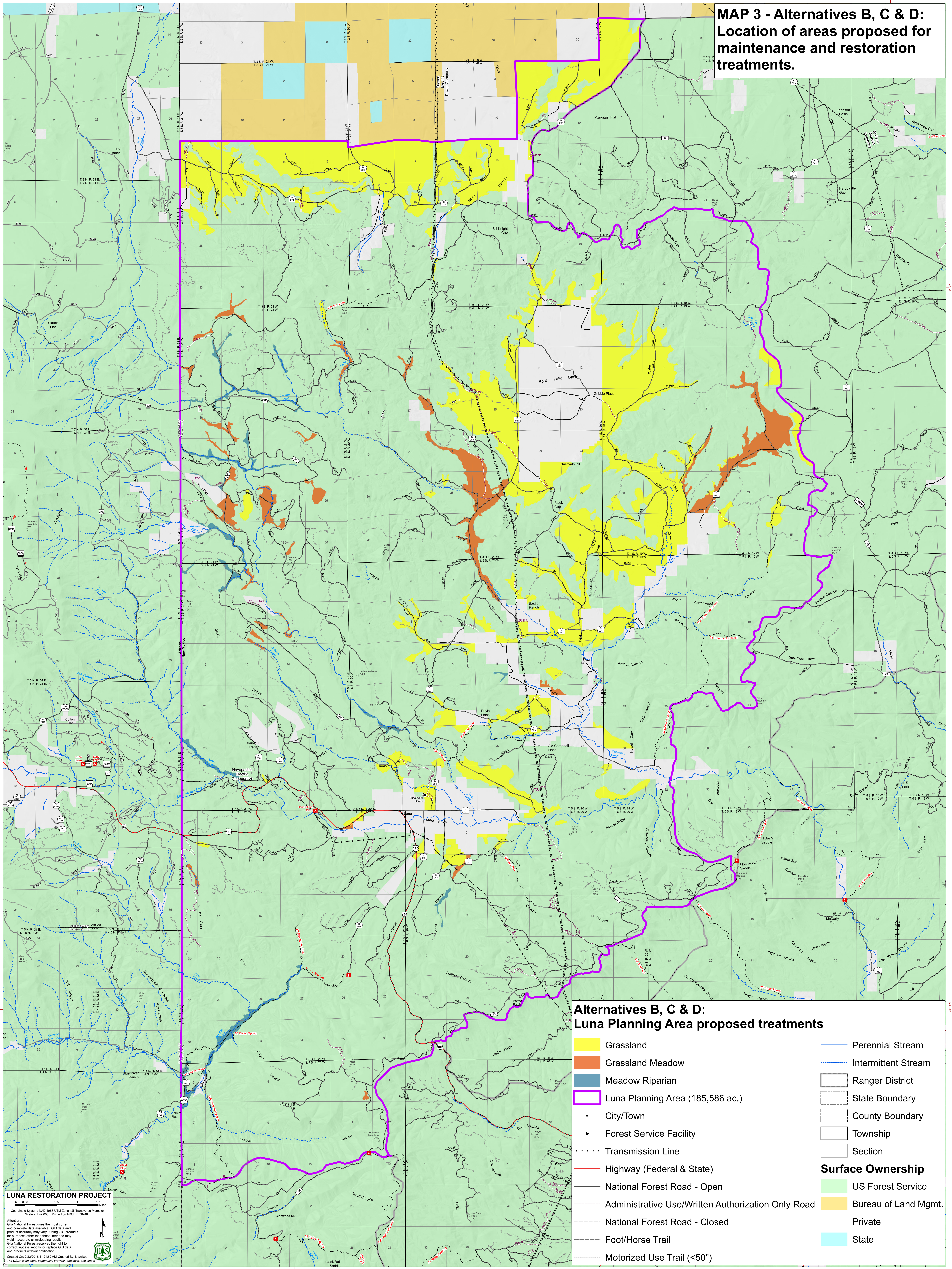


**MAP 3 - Alternatives B, C & D:
Location of areas proposed for
maintenance and restoration
treatments.**



**Alternatives B, C & D:
Luna Planning Area proposed treatments**

- Grassland
 - Grassland Meadow
 - Meadow Riparian
 - Luna Planning Area (185,586 ac.)
 - City/Town
 - Forest Service Facility
 - Transmission Line
 - Highway (Federal & State)
 - National Forest Road - Open
 - Administrative Use/Written Authorization Only Road
 - National Forest Road - Closed
 - Foot/Horse Trail
 - Motorized Use Trail (<50")
 - Perennial Stream
 - Intermittent Stream
 - Ranger District
 - State Boundary
 - County Boundary
 - Township
 - Section
- Surface Ownership**
- US Forest Service
 - Bureau of Land Mgmt.
 - Private
 - State

LUNA RESTORATION PROJECT
 0 0.25 0.5 1 Miles
 Coordinate System: NAD 1983 UTM Zone 12N Transverse Mercator
 Scale = 1:42,000 Printed on ARCTIC 35x45
 Attention: GISA National Forest uses the most current and complete data available. GIS data and product accuracy may vary. Using GIS products for purposes other than those intended may yield inaccurate or misleading results. GISA National Forest reserves the right to correct, update, modify, or replace GIS data and products without notification.
 Created On: 2/22/2018 11:21:52 AM Created By: khawick
 The USDA is an equal opportunity provider, employer, and service provider.