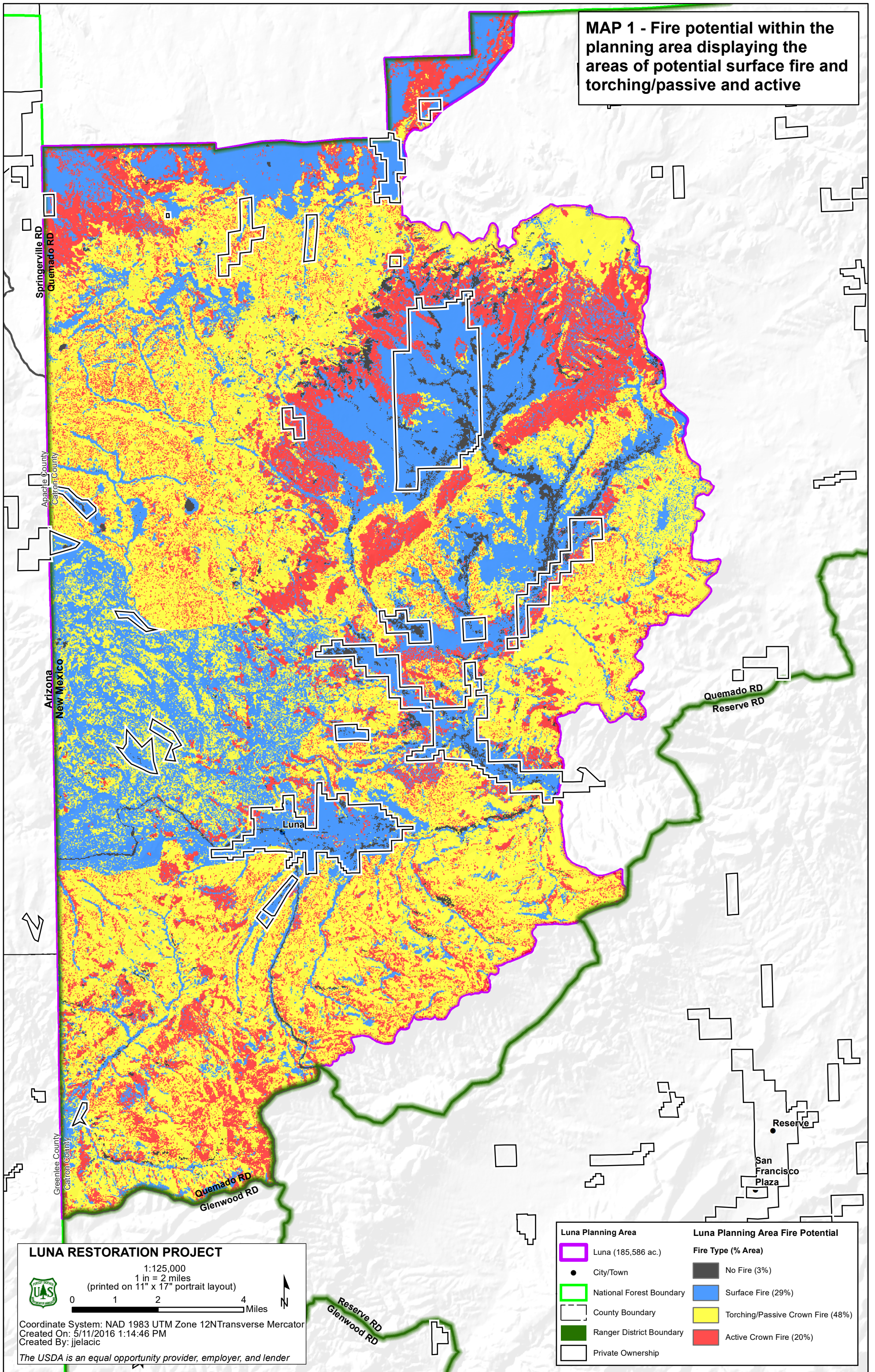


MAP 1 - Fire potential within the planning area displaying the areas of potential surface fire and torching/passive and active



LUNA RESTORATION PROJECT

1:125,000
1 in = 2 miles
(printed on 11" x 17" portrait layout)

0 1 2 4 Miles

Coordinate System: NAD 1983 UTM Zone 12N Transverse Mercator
Created On: 5/11/2016 1:14:46 PM
Created By: jjelacic

The USDA is an equal opportunity provider, employer, and lender

| Luna Planning Area | | Luna Planning Area Fire Potential | |
|--------------------|--------------------------|-----------------------------------|-----------------------------------|
| | Luna (185,586 ac.) | | No Fire (3%) |
| | National Forest Boundary | | Surface Fire (29%) |
| | County Boundary | | Torching/Passive Crown Fire (48%) |
| | Ranger District Boundary | | Active Crown Fire (20%) |
| | Private Ownership | | |