

United States Department of Agriculture
Forest Service
Colorado
May 21, 2020
America's Great Outdoors
Ranger Districts
and Rifle (NV Portion)
Blanco, Eagle (NV Portion)
Flat Tops
National Forest
White River
Use Map
Motor Vehicle
Summer

PURPOSE AND CONTENTS OF THIS MAP

The designations shown on this motor vehicle use map (MVUM) were made by the responsible official pursuant to 36 CFR 212.51, are effective as of the date on the front cover of this MVUM, and will remain in effect until superseded by a new MVUM.

It is the responsibility of the user to acquire the current MVUM. This MVUM shows the National Forest System roads, National Forest System trails, and the areas on National Forest System lands in the White River National Forest that are designated for motor vehicle use pursuant to 36 CFR 212.51. This MVUM also identifies the vehicle classes allowed on each route and in each area, and any seasonal restrictions that apply on those routes and in those areas.

Designation of a road, trail, or area for motor vehicle use by a particular class of vehicle under 36 CFR 212.51 should not be interpreted as encouraging or inviting use or implying that the road, trail or area is passable, actively maintained, or safe for travel. Motor vehicle designations include parking along designated routes and at facilities associated with designated routes when it is safe to do so and when not causing damage to National Forest System resources. Seasonal weather conditions and natural events may render designated routes and trails impassable for extended periods. Designated areas may contain dangerous or impassable terrain. Many designated roads and trails may be passable only by high-clearance vehicles or four-wheel-drive vehicles. Maintenance of designated roads and trails will depend on available resources, and many may receive little maintenance.

This motor vehicle use map identifies those roads, trails, and areas designated for the motor vehicle use under 36 CFR 212.51 for the purpose of enforcing the prohibition at 36 CFR 261.13. This is a limited purpose. The other public roads are shown for information and navigation purposes only and are not subject to designation under the Forest Service travel management regulation.

These designations apply only to National Forest System roads, National Forest System trails, and areas on National Forest System lands.

PROHIBITIONS

It is prohibited to possess or operate a motor vehicle on National Forest System lands on the White River National Forest other than in accordance with these designations (36 CFR 261.13).

Violators of 36 CFR 261.13 are subject to a fine of up to \$5,000, imprisonment for up to 6 months, or both (18 U.S.C. 3571(i)). This prohibition applies regardless of the presence or absence of signs.

This map does not display nonmotorized uses, over-snow uses, or other facilities and attractions on the White River National Forest. Obtain forest visitor information from the local national forest office.

Designated roads, trails and areas may also be subject to temporary, emergency closures. As a visitor, you must comply with signs notifying you of such restrictions. A national forest may issue an order to close a road, trail or area on a temporary basis to protect the life, health, or safety of forest visitors or the natural or cultural resources in these areas. Such a temporary and/or emergency closure is consistent with the Travel Management Rule (36 CFR 212.52 (b)), 36 CFR 261 (subpart B).

The designation "road or trail open to all motor vehicles" does not supersede State traffic law.

OPERATOR RESPONSIBILITIES

Operating a motor vehicle on National Forest System roads, National Forest System trails, and in areas on National Forest System lands carries a greater responsibility than operating that vehicle in a city or other developed setting. Not only must you know and follow all applicable traffic laws, you need to show concern for the environment as well as other forest users. The misuse of motor vehicles can lead to the temporary or permanent closure of any designated road, trail, or area. As a motor vehicle operator, you are also subject to State traffic law, including State requirements for licensing, registration, and operation of the vehicle in question.

Motor vehicle use, especially off-highway vehicle use, involves inherent risks that may cause property damage, personal injury and possible death to participants. Drive cautiously and anticipate rough surfaces and features, such as snow, mud, vegetation, and water crossings common to remote driving conditions. By your participation, you voluntarily assume full responsibility for these damages, risks, and dangers. Take care at all times to protect yourself and those under your responsibility.

Much of the White River National Forest is remote. Medical assistance may not be readily available. Cellular telephones do not work in many areas of the White River National Forest. Take adequate food, water, first-aid supplies, and other equipment appropriate for the conditions and expected weather.

ALWAYS REMEMBER TO RESPECT PRIVATE LAND! PROTECT YOUR PRIVILEGE. STAY ON DESIGNATED ROADS AND TRAILS AND IN DESIGNATED AREAS.

Read and understand this map in its entirety. If you have questions, please contact the White River National Forest for clarification.

As a motor vehicle operator on a National Forest System road, trail, or area you must comply with this map, as well as all Federal, State, and local laws and regulations. Compliance with these rules is your responsibility.

The U.S. Department of Agriculture (USDA) prohibits discrimination in all its programs and activities on the basis of race, color, national origin, age, disability, and where applicable, sex, marital status, familial status, parental status, religion, sexual orientation, genetic information, political beliefs, reprisal, or because all or part of an individual's income is derived from any public assistance program. (Not all prohibited bases apply to all programs.) Persons with disabilities who require alternative means for communication of program information (Braille, large print, audiotape, etc.) should contact USDA's TARGET Center at (202) 720-2600 (voice and TDD). To file a complaint of discrimination, write to USDA, Director, Office of Civil Rights, 1400 Independence Avenue, S.W., Washington, D.C. 20250-9410, or call (800) 795-3272 (voice) or (202) 720-6392 (TDD). USDA is an equal opportunity provider and employer.

Legend

- Roads Open to Highway Legal Vehicles
- Roads Open to all Vehicles
- Trails Open to Vehicles 50" or Less in Width
- Trails Open to Motorcycles Only
- Special Vehicle Designation (See Table)
- Seasonal Designation (See Table)
- Dispersed Camping (See Table)
- Interstate
- Highways, U.S. State
- Other Public Roads
- Short Route Identifier
- Milepost Marker
- FS Campgrounds
- Picnic Area
- Motorized Trailhead
- Information Site
- Peaks
- Forest or Unit Boundary
- National Forest System Lands
- Non-National Forest System Lands within the National Forest
- Wilderness Areas
- Political Boundary
- Township and Range Lines
- Section Lines
- Lakes and Rivers

EXPLANATION OF LEGEND ITEMS

Roads Open to Highway Legal Vehicles Only:
These roads are open only to motor vehicles licensed under State law for general operation on all public roads within the state.

Roads Open to All Vehicles:
These roads are open to all motor vehicles, including smaller off-highway vehicles that may not be licensed for highway use (but not to oversize or overweight vehicles under State traffic law).

Trails Open to Vehicles 50" or Less in Width:
Trails open only to motor vehicles less than 50 inches in width at the widest point on the vehicle.

Trails Open to Motorcycles Only:
These trails are open only to motorcycles. Sidecars are not permitted.

Special Vehicle Designation:
This symbol indicates the road or trail is open to classes of vehicles other than those listed above. Refer to the Seasonal and Special Designation Table for further instructions.

Seasonal Designation:
This symbol, used in conjunction with one of the other road or trail symbols, indicates that the road or trail is open only during certain portions of the year. Refer to the Seasonal and Special Designation Table for further instructions.

Dispersed Camping:
This symbol is used along with a designated road or trail to indicate limited cross-country motor vehicle use within a specific distance of that route, solely for the purpose of dispersed camping. The dots indicate where this activity is permitted. They may be on the left, right, or both sides of the route. Refer to the Dispersed Camping Table for specifics.

Other Public Roads and Trails:
Interstate
Highways, U.S. State
Other Public Roads

These symbols are used to show routes the Forest Service does not have jurisdiction over and has not designated for motorized use. These symbols are part of the reference layers showing connections to towns and cities outside the forest boundary.

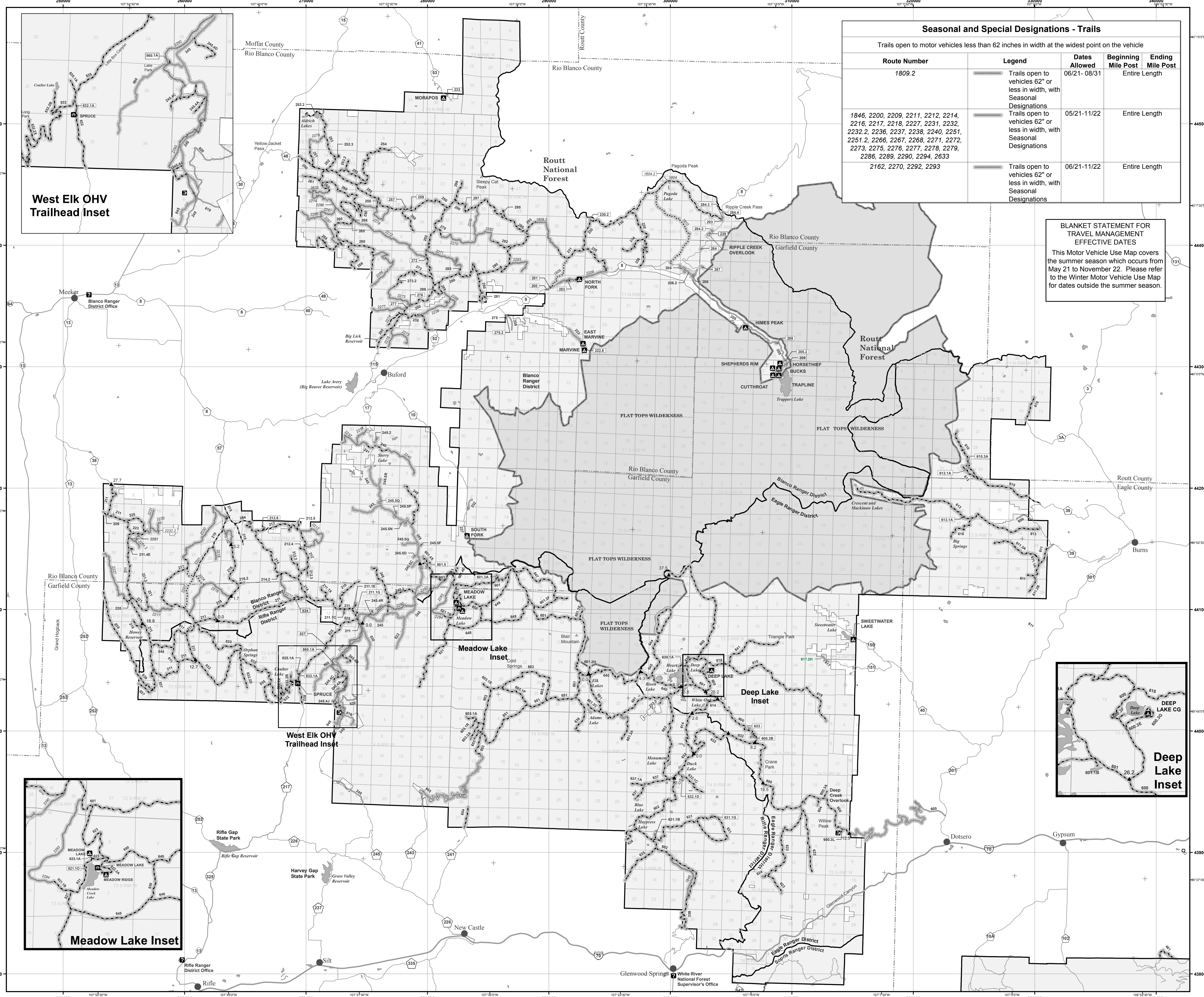
Short Route Identifier:
This symbol is used for roads that are too short to show a symbol type on the map. The symbol contains the number of the road or trail. Users should refer to the corresponding number in the Short Route Table for designation information.

Milepost Marker:
This symbol is used to display the beginning and ending mileposts of a road that has a change in the designation but not the symbology.

Motorized Trail Access:
This symbol indicates a trailhead for access to a motorized route. Not all motorized routes have trailheads and those that do may range from primitive to developed.

BLANKET STATEMENTS FOR TRAVEL MANAGEMENT

Motor vehicles may be parked up to 30 feet from the edge of the road surface when it is safe to do so without causing damage to NFS resources or facilities, unless prohibited by state law, a traffic sign, or an order (36 CFR 261.54).



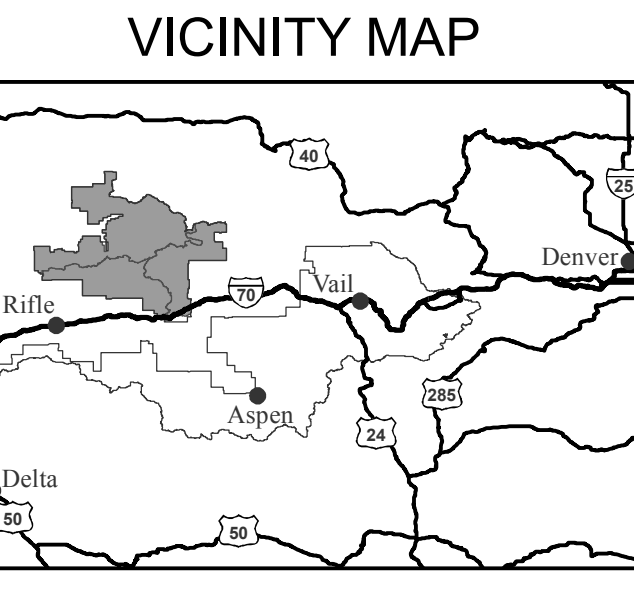
Seasonal and Special Designations - Trails

Trails open to motor vehicles less than 62 inches in width at the widest point on the vehicle

Route Number	Legend	Dates Allowed	Beginning Mile Post	Ending Mile Post
1809.2	[Symbol]	06/21-08/31	Entire Length	Entire Length
1846, 2200, 2209, 2211, 2212, 2214, 2216, 2217, 2218, 2227, 2231, 2232, 2232.2, 2236, 2237, 2238, 2240, 2251, 2251.2, 2266, 2267, 2268, 2271, 2272, 2273, 2275, 2276, 2277, 2278, 2279, 2286, 2289, 2290, 2294, 2633	[Symbol]	05/21-11/22	Entire Length	Entire Length
2162, 2270, 2292, 2293	[Symbol]	06/21-11/22	Entire Length	Entire Length

BLANKET STATEMENT FOR TRAVEL MANAGEMENT EFFECTIVE DATES

This Motor Vehicle Use Map covers the summer season which occurs from May 21 to November 22. Please refer to the Winter Motor Vehicle Use Map for dates outside the summer season.



INFORMATION SOURCES

White River National Forest Supervisor's Office
900 Grand Avenue
Glenwood Springs, CO 81601
Phone: (970) 945-2521

Blanco Ranger District
220 East Market Street
Meeker, CO 81644
Phone: (970) 878-4039

Rifle Ranger District
0094 County Road 244
Rifle, CO 81650
Phone: (970) 825-2371

Eagle-Holy Cross Ranger District
24747 US Hwy 24
Mintum, CO 81645
Phone: (970) 827-5715

White River National Forest Website: www.fs.usda.gov/whiteriver

In case of emergency, Dial 911



Travel and recreate with minimum impact.

Respect the environment and the rights of others.

Educate yourself plan and prepare before you go.

Allow for future use of the outdoors by leaving it better than you found it.

Discover the rewards of responsible recreation.

For more information on Tread Lightly!, go to www.treadlightly.org or call 1-800-966-9900.

Seasonal Designations - Roads

Route Number	Legend	Dates Allowed	Beginning Mile Post	Ending Mile Post
205	[Symbol]	05/21-11/22	7.5	9.3
211	[Symbol]	05/21-11/22	0.0	12.7
211	[Symbol]	06/21-11/22	12.7	18.8
211	[Symbol]	05/21-11/22	18.8	27.7
212	[Symbol]	05/21-11/22	0.0	0.6
212	[Symbol]	05/21-11/22	1.3	6.4
214	[Symbol]	05/21-11/22	1.0	7.2
216	[Symbol]	05/21-11/22	0.0	1.7
216	[Symbol]	06/21-11/22	1.7	5.2
245	[Symbol]	05/21-11/22	13.5	34.5
252	[Symbol]	05/21-11/22	0.6	4.1
600	[Symbol]	05/21-11/22	1.9	12.5
600	[Symbol]	06/01-11/22	12.5	19.5
600	[Symbol]	06/21-11/22	19.5	37.5

Seasonal Designations - Roads

Route Number	Legend	Dates Allowed	Beginning Mile Post	Ending Mile Post
601	[Symbol]	05/21-11/22	0.0	23.8
601	[Symbol]	06/21-11/22	23.8	26.2
603	[Symbol]	05/21-11/22	1.1	12.0
603	[Symbol]	05/21-11/22	12.0	19.0
610	[Symbol]	05/21-11/22	0.8	6.8
611	[Symbol]	05/21-11/22	9.7	11.8
614	[Symbol]	05/21-11/22	0.0	2.6
614	[Symbol]	06/21-11/22	2.6	4.3
632	[Symbol]	05/21-11/22	0.0	6.6
632	[Symbol]	06/21-11/22	6.6	8.2
640	[Symbol]	05/21-11/22	0.0	4.3
640	[Symbol]	06/21-11/22	4.3	6.9
819	[Symbol]	05/21-11/22	0.7	0.9

Seasonal Designations - Roads

Route Number	Legend	Dates Allowed	Beginning Mile Post	Ending Mile Post
200, 203, 210, 211.C, 211.E, 211.G, 211.IX, 211.AE, 212.2, 212.3, 212.4, 212.5, 214.2, 216.2, 217, 218, 219, 220, 221, 221.2, 223, 225, 226, 233.2, 235, 240, 241, 245.4A, 245.4C, 245.4D, 245.4J, 245.4R, 246, 248, 248.2, 250, 251, 252.3, 253, 253.2, 254, 255, 257, 258, 259, 260, 261, 262, 263, 265, 266, 268, 269, 270, 272, 273, 273.2, 276, 277, 280, 281, 283, 285, 288, 289, 601.2A, 601.2C, 601.2E, 601.2F, 601.2H, 601.3A, 601.4E, 601.4X, 601.8, 602, 603.1A, 603.1E, 603.1M, 603.1P, 603.1R, 610.3A, 611.1A, 611.2A, 611.2B, 612, 612.1A, 613, 613.1A, 616, 631, 631.1B, 631.1G, 632.1C, 632.1D, 635, 636, 637, 637.1A, 638, 647, 648, 649, 650, 651, 653, 653.2A, 654, 811, 812, 821, 821.1B, 823, 825, 825.1A, 827, 832, 832.1A, 832.2B, 832.2D, 832.2X, 833, 834, 835, 848	[Symbol]	05/21-11/22	Entire Length	Entire Length
202	[Symbol]	05/16-11/10	Entire Length	Entire Length
204, 205.2, 206, 206.2, 208, 209, 222, 222.6, 233, 239, 243, 245.2, 245.5C, 245.5D, 245.5F, 245.5G, 245.5N, 245.5P, 245.5Q, 245.5R, 284, 284.2, 284.3, 284.4, 287, 462, 822, 845, 860, 860.1A	[Symbol]	05/21-11/22	Entire Length	Entire Length
205.4	[Symbol]	06/13-11/10	Entire Length	Entire Length
205.5, 205.6	[Symbol]	06/13-09/15	Entire Length	Entire Length
205.7	[Symbol]	06/13-10/06	Entire Length	Entire Length
205.8	[Symbol]	06/13-10/27	Entire Length	Entire Length
207, 227.2, 227.3	[Symbol]	05/16-11/10	Entire Length	Entire Length
222.2	[Symbol]	05/21-10/27	Entire Length	Entire Length

Seasonal Designations - Roads

Route Number	Legend	Dates Allowed	Beginning Mile Post	Ending Mile Post
222.3, 222.4, 222.5	[Symbol]	05/21-11/10	Entire Length	Entire Length
230, 230.2, 231, 234, 290, 292, 293, 295, 297, 299, 601.1B, 615, 618, 619, 630, 630.1A, 633, 641, 644, 645, 837, 839	[Symbol]	06/21-11/22	Entire Length	Entire Length
600.3A, 600.3L, 604, 622, 623, 624	[Symbol]	06/01-11/22	Entire Length	Entire Length
600.3C	[Symbol]	06/01-09/29	Entire Length	Entire Length
600.3E, 600.3F, 600.3G	[Symbol]	06/21-09/29	Entire Length	Entire Length
607	[Symbol]	05/21-09/29	Entire Length	Entire Length
821.10, 823.1A, 823.2A	[Symbol]	06/13-10/27	Entire Length	Entire Length
830	[Symbol]	06/21-11/22	Entire Length	Entire Length

Seasonal Designations - Roads

Route Number	Legend	Dates Allowed	Beginning Mile Post	Ending Mile Post
222.3, 222.4, 222.5	[Symbol]	05/21-11/10	Entire Length	Entire Length
230, 230.2, 231, 234, 290, 292, 293, 295, 297, 299, 601.1B, 615, 618, 619, 630, 630.1A, 633, 641, 644, 645, 837, 839	[Symbol]	06/21-11/22	Entire Length	Entire Length
600.3A, 600.3L, 604, 622, 623, 624	[Symbol]	06/01-11/22	Entire Length	Entire Length
600.3C	[Symbol]	06/01-09/29	Entire Length	Entire Length
600.3E, 600.3F, 600.3G	[Symbol]	06/21-09/29	Entire Length	Entire Length
607	[Symbol]	05/21-09/29	Entire Length	Entire Length
821.10, 823.1A, 823.2A	[Symbol]	06/13-10/27	Entire Length	Entire Length
830	[Symbol]	06/21-11/22	Entire Length	Entire Length

See Reverse Side For Additional Tables