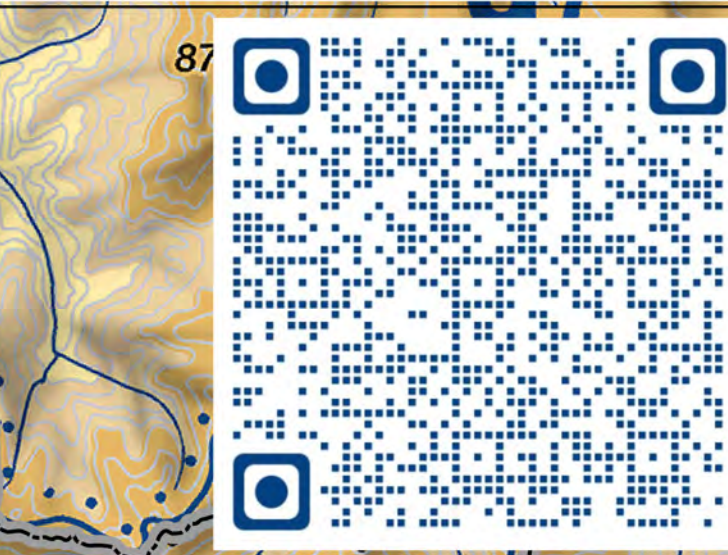
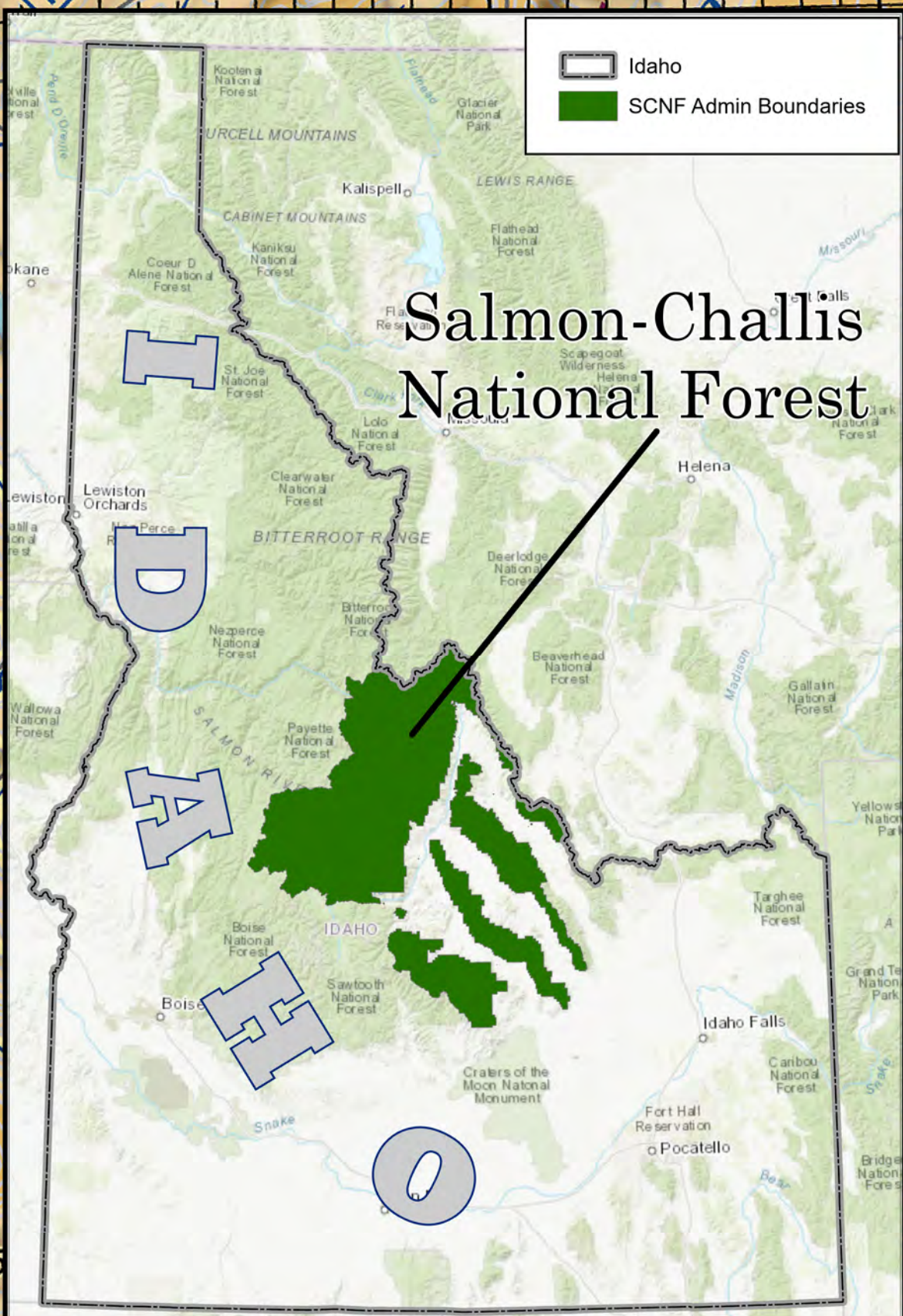


**AERIAL FLIGHT HAZARDS
SALMON - CHALLIS
NATIONAL FOREST
IDAHO**

- Streams
- SCNF Boundary
- Wilderness Boundary
- Idaho National Laboratory (Restricted Area)
- Military Training Routes
- Cable Crossings
- Electric Transmission Lines
- Airports, Airstrips & Landing Strips
- Five Mile Warning Boundary
- Major Flight Routes
- Highways
- Mountains
- Hang Gliding Zones
- Lookouts
- Towers
- MTR Turning Points
- Areas of Turbulence
- Helispots
- Repeater Site



This Map depicts flight hazards in and around the Salmon - Challis National Forests, Idaho. Not all flight hazards are shown. Map published by the USDA Forest Service, Salmon - Challis National Forest, Resource Information Group.



0 4 8 12 16 20 Miles
See NO Comment for Class D limits