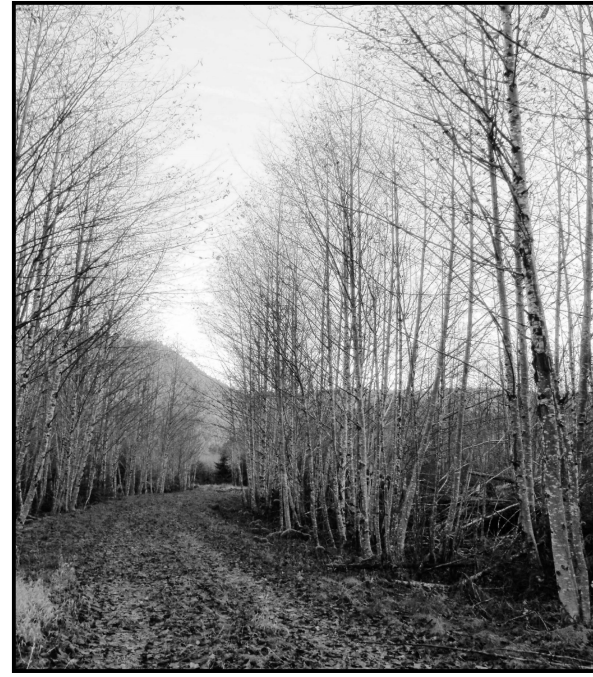


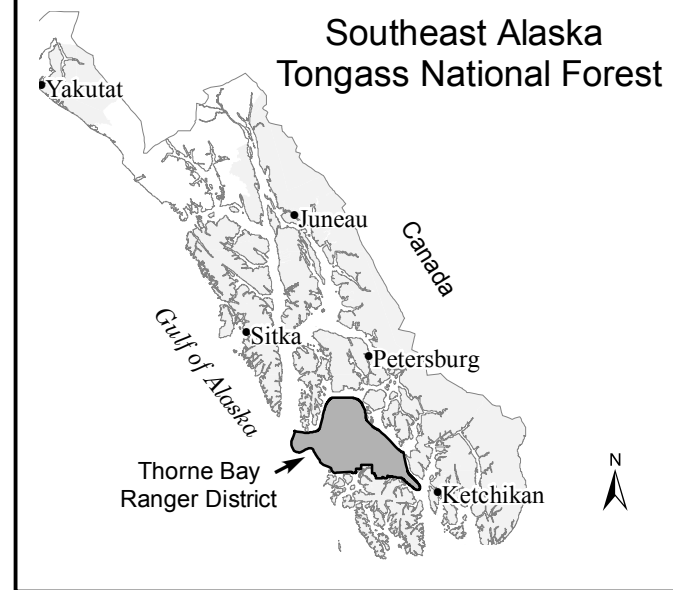
Motor Vehicle Use Map

Tongass National Forest Thorne Bay Ranger District Coffman Cove Area



America's Great Outdoors
Alaska JAN 01 2019
Forest Service
United States Department of Agriculture

VICINITY MAP



INFORMATION SOURCES

Emergency

Emergency Services.....911
Coast Guard.....1-800-478-5555
or *CG (Mobile Devices Only)

Information

Thorne Bay Ranger District
P.O. Box 19001
Thorne Bay, AK. 99919
(907) 828-3304

Craig Ranger District
P.O. Box 500
Craig, AK. 99921
(907) 826-3271

Tongass National Forest

648 Mission Street
Federal Building
Ketchikan, AK. 99901
(907) 225-3101

<https://www.fs.usda.gov/detail/tongass/about-forest/offices>

To report an OHV Violation (907) 826-1637 (Craig)
or (907) 828-3211 (Thorne Bay)

Alaska State Troopers.....(907) 225-5118 (Ketchikan)

In accordance with Federal civil rights law and U.S. Department of Agriculture (USDA) civil rights regulations and policies, the USDA, its Agencies, offices, and employees, and institutions participating in or administering USDA programs are prohibited from discriminating based on race, color, national origin, religion, sex, gender identity (including gender expression), sexual orientation, disability, age, marital status, family/parental status, income derived from a public assistance program, political beliefs, or reprisal or retaliation for prior civil rights activity, in any program or activity conducted or funded by USDA (not all bases apply to all programs). Remedies and complaint filing deadlines vary by program or incident.

Persons with disabilities who require alternative means of communication for program information (e.g., Braille, large print, audiotape, American Sign Language, etc.) should contact the responsible Agency or USDA's TARGET Center at (202) 720-2800 (voice and TTY) or contact USDA through the Federal Relay Service at (800) 877-8339. Additionally, program information may be made available in languages other than English.

To file a program discrimination complaint, complete the USDA Program Discrimination Complaint Form, AD-3027, found online at http://www.ascr.usda.gov/complaint_filing_cust.html and at any USDA office or write a letter addressed to USDA and provide in the letter all of the information requested in the form. To request a copy of the complaint form, call (866) 632-9992. Submit your completed form or letter to USDA by: (1) mail: U.S. Department of Agriculture, Office of the Assistant Secretary for Civil Rights, 1400 Independence Avenue, SW, Washington, D.C. 20250-9410; (2) fax: (202) 690-7442; or (3) email: program.intake@usda.gov (link sends e-mail).

USDA is an equal opportunity provider, employer and lender.
FS-873-1005-54-A-2019

PURPOSE AND CONTENTS OF THIS MAP

The designations shown on this motor vehicle use map (MVUM) were made by the responsible official pursuant to 36 CFR 212.51; are effective as of the date on the front cover of this MVUM; and will remain in effect until superseded by next year's MVUM.

It is the responsibility of the user to acquire the current MVUM. This MVUM shows the National Forest System roads, National Forest System trails, and the areas on National Forest System lands in the THORNE BAY RANGER DISTRICT that are designated for motor vehicle use pursuant to 36 CFR 212.51. This MVUM also identifies the vehicle classes allowed on each route and in each area; and any seasonal restrictions that apply on those routes and in those areas.

Designation of a road, trail, or area for motor vehicle use by a particular class of vehicle under 36 CFR 212.51 should not be interpreted as encouraging or inviting use or implying that the road, trail, or area is passable, actively maintained, or safe for travel. Motor vehicle designations include parking along designated routes and at facilities associated with designated routes when it is safe to do so and when not causing damage to National Forest System resources. Seasonal weather conditions and natural events may render designated roads and trails impassable for extended periods. Designated areas may contain dangerous or impassable terrain. Many designated roads and trails may be passable only by high-clearance vehicles or four-wheel-drive vehicles. Maintenance of designated roads and trails will depend on available resources, and many may receive little maintenance.

This motor vehicle use map identifies those roads, trails, and areas designated for the motor vehicle use under 36 CFR 212.51 for the purpose of enforcing the prohibition at 36 CFR 261.13. This is a limited purpose. The other public roads are shown for information and navigation purposes only and are not subject to designation under the Forest Service travel management regulation.

These designations apply only to National Forest System roads, National Forest System trails, and areas on National Forest System lands.

OPERATOR RESPONSIBILITIES

Operating a motor vehicle on National Forest System roads, National Forest System trails, and in areas on National Forest System lands carries a greater responsibility than operating that vehicle in a city or other developed setting. Not only must you know and follow all applicable traffic laws, you need to show concern for the environment as well as other forest users. The misuse of motor vehicles can lead to the temporary or permanent closure of any designated trail, or area. As a motor vehicle operator, you are also subject to State traffic law, including State requirements for licensing, registration, and operation of the vehicle in question.

Motor vehicle use, especially off-highway vehicle use, involves inherent risks that may cause property damage, serious injury, and possibly death to participants. Drive cautiously and anticipate rough surfaces and features, such as snow, mud, vegetation, and water crossings common to remote driving conditions. By your participation, you voluntarily assume full responsibility for these damages, risks, and dangers. Take care at all times to protect yourself and those under your responsibility.

Much of the THORNE BAY RANGER DISTRICT is remote. Medical assistance may not be readily available. Cellular telephones do not work in many areas of the THORNE BAY RANGER DISTRICT. Take adequate food, water, first-aid supplies, and other equipment appropriate for the conditions and expected weather.

ALWAYS REMEMBER TO RESPECT PRIVATE LAND! PROTECT YOUR PRIVILEGE. STAY ON DESIGNATED ROADS AND TRAILS AND IN DESIGNATED AREAS.

Read and understand this map in its entirety. If you have questions refer to the THORNE BAY RANGER DISTRICT for clarification.

As a motor vehicle operator on a National Forest System road, trail, or area, you must comply with this map, as well as all Federal, State, and local laws and regulations. Compliance with these rules is your responsibility.

DISTRICT-WIDE TRAVEL MANAGEMENT STATEMENT

Dispersed Camping: Motor vehicle use off of designated routes up to 100 feet from the centerline of the route is allowed for the purpose of dispersed camping as long as the vehicle remains on a hardened surface.

Legend

- Roads Open to Highway Legal Vehicles
- Roads Open to All Vehicles
- Trails Open to Vehicles 50" or Less in Width
- Highways, US, State
- Other Public Roads
- Short Route Identifier
- Cabins
- Peaks
- Forest or Unit Boundary
- National Forest System Lands
- Non-National Forest System Lands within the National Forest
- Lakes and Salt Water

EXPLANATION OF LEGEND ITEMS

Roads Open to Highway Legal Vehicles:

These roads are open only to motor vehicles licensed under State law for general operation on all public roads within the state.

Roads Open to All Vehicles:

These roads are open to all motor vehicles, including smaller off-highway vehicles that may not be licensed for highway use (but not to oversize or overweight vehicles under State traffic law).

Trails Open to Vehicles 50 inches or Less in Width:

These trails are open only to motor vehicles less than 50 inches in width at the widest point on the vehicle.

Other Public Roads and Trails:

- Highways, U.S., State
- Other Public Roads

These symbols are used to show routes the Forest Service does not have jurisdiction over and has not designated for motorized use. These symbols are part of the reference layers showing connections to towns and cities outside the forest boundary.

Short Route Identifier:

This symbol is used for routes that are too short to show a symbol type on the map. The symbol contains the number of the road or trail. Users should refer to the corresponding number in the Short Route Table for designation information.

Areas Open to Cross Country Travel:

These are areas on National Forest System land that allow cross-country travel by motorized vehicles. Specific vehicle classes and seasonal designations may be indicated in the Seasonal and Special Designation Table.

PROHIBITIONS

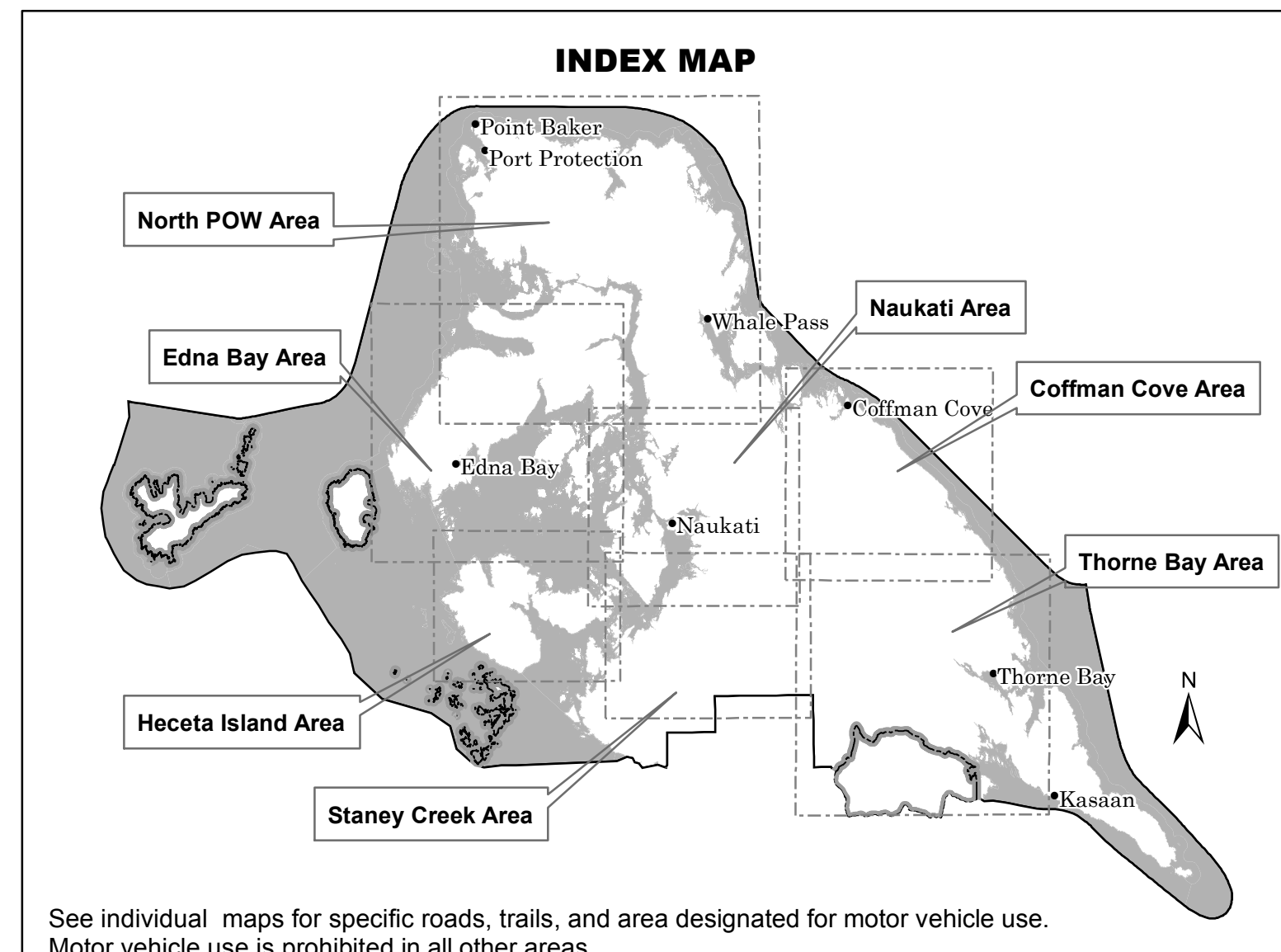
It is prohibited to possess or operate a motor vehicle on National Forest System lands on the THORNE BAY RANGER DISTRICT other than in accordance with these designations (36 CFR 261.13).

Violators of 36 CFR 261.13 are subject to a fine of up to \$5,000, imprisonment for up to 6 months or both (18 U.S.C. 3571(e)). This prohibition applies regardless of the presence or absence of signs.

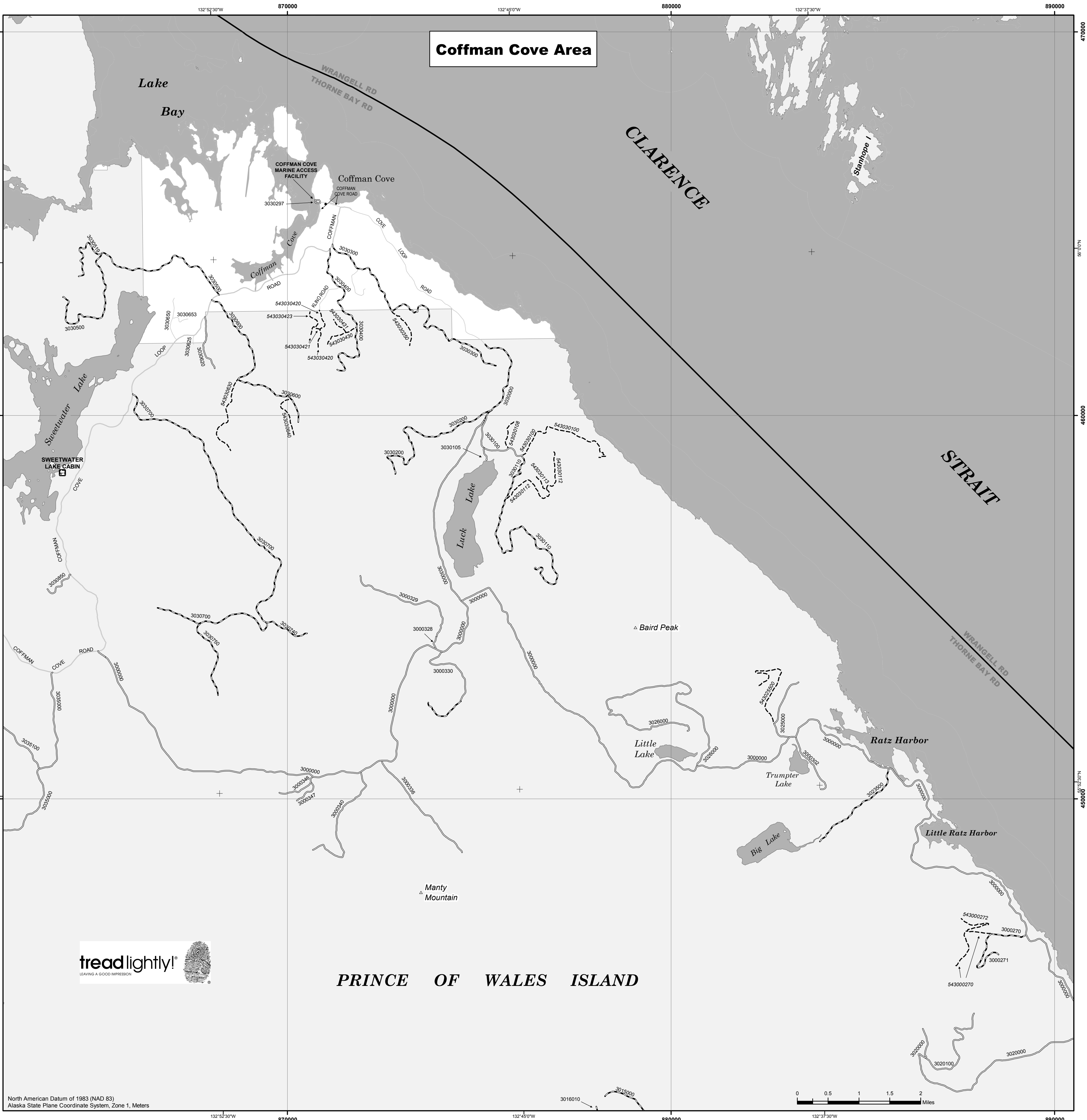
This map does not display nonmotorized uses, over-snow vehicle uses, or other facilities and attractions on the THORNE BAY RANGER DISTRICT. Obtain forest visitor information from the local national forest office.

Designated roads, trails, and areas may also be subject to temporary, emergency closures. As a visitor, you must comply with signs notifying you of such restrictions. A national forest may issue an order to close a road, trail, or area on a temporary basis to protect the life, health or safety of forest visitors or the natural or cultural resources in these areas. Such temporary and/or emergency closures are consistent with the Travel Management Rule (36 CFR 212.52 (b), 36 CFR 261 subpart B).

The designation "road or trail open to all motor vehicles" does not supersede State traffic law.



See individual maps for specific roads, trails, and area designated for motor vehicle use. Motor vehicle use is prohibited in all other areas.



PRINCE OF WALES ISLAND

North American Datum of 1983 (NAD 83)
Alaska State Plane Coordinate System, Zone 1, Meters

