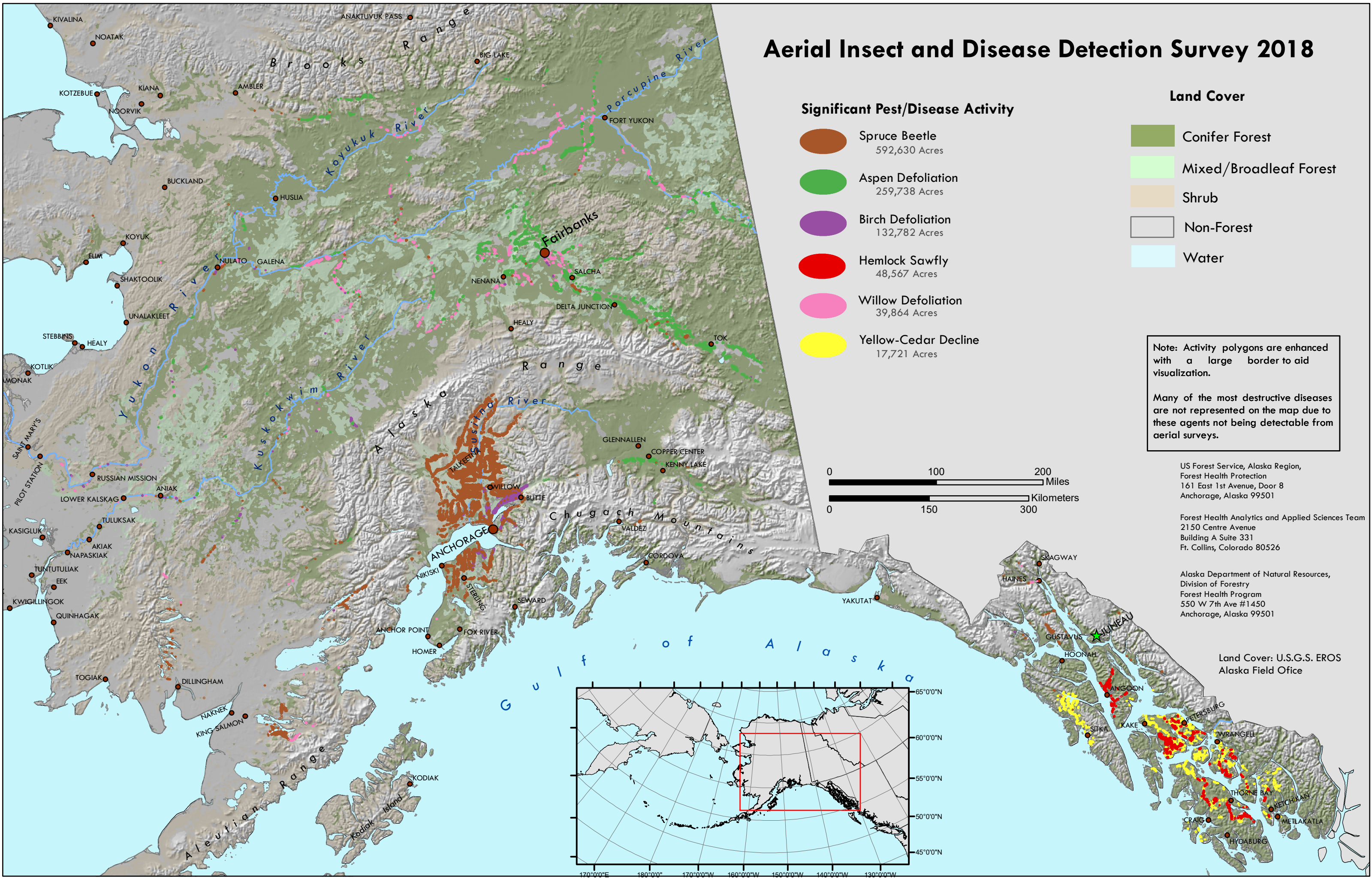


# Aerial Insect and Disease Detection Survey 2018



### Significant Pest/Disease Activity

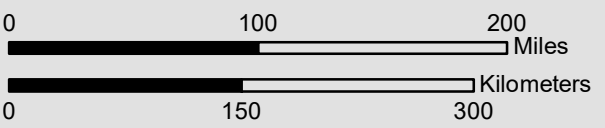
- Spruce Beetle  
592,630 Acres
- Aspen Defoliation  
259,738 Acres
- Birch Defoliation  
132,782 Acres
- Hemlock Sawfly  
48,567 Acres
- Willow Defoliation  
39,864 Acres
- Yellow-Cedar Decline  
17,721 Acres

### Land Cover

- Conifer Forest
- Mixed/Broadleaf Forest
- Shrub
- Non-Forest
- Water

**Note:** Activity polygons are enhanced with a large border to aid visualization.

Many of the most destructive diseases are not represented on the map due to these agents not being detectable from aerial surveys.

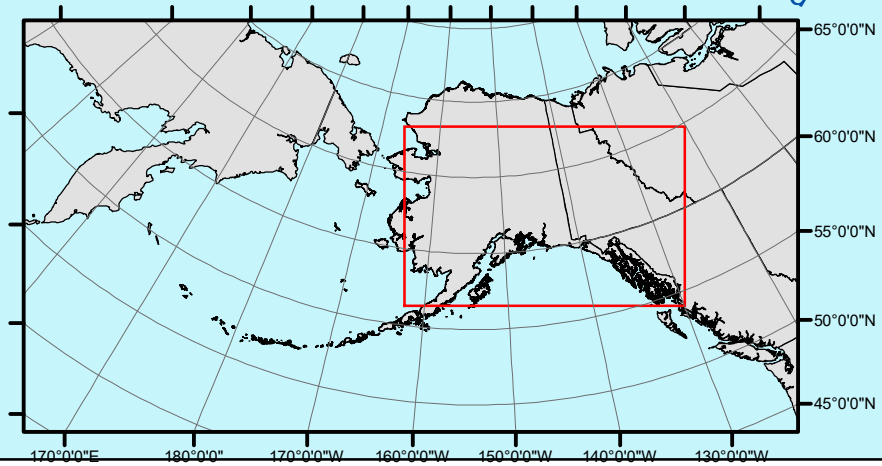


US Forest Service, Alaska Region,  
Forest Health Protection  
161 East 1st Avenue, Door 8  
Anchorage, Alaska 99501

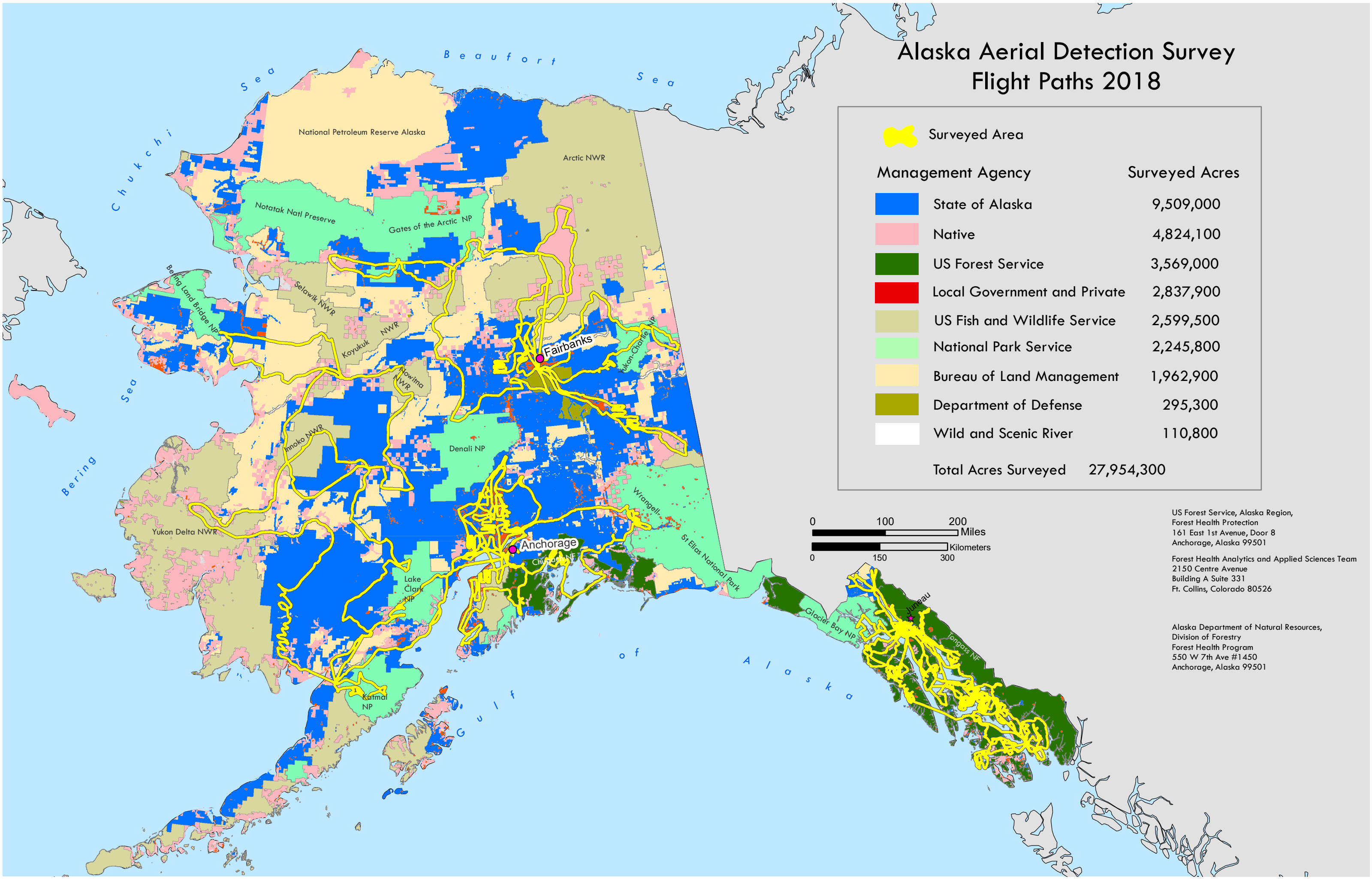
Forest Health Analytics and Applied Sciences Team  
2150 Centre Avenue  
Building A Suite 331  
Ft. Collins, Colorado 80526

Alaska Department of Natural Resources,  
Division of Forestry  
Forest Health Program  
550 W 7th Ave #1450  
Anchorage, Alaska 99501

Land Cover: U.S.G.S. EROS  
Alaska Field Office



# Alaska Aerial Detection Survey Flight Paths 2018



Management Agency	Surveyed Acres
State of Alaska	9,509,000
Native	4,824,100
US Forest Service	3,569,000
Local Government and Private	2,837,900
US Fish and Wildlife Service	2,599,500
National Park Service	2,245,800
Bureau of Land Management	1,962,900
Department of Defense	295,300
Wild and Scenic River	110,800
<b>Total Acres Surveyed</b>	<b>27,954,300</b>



US Forest Service, Alaska Region,  
Forest Health Protection  
161 East 1st Avenue, Door 8  
Anchorage, Alaska 99501

Forest Health Analytics and Applied Sciences Team  
2150 Centre Avenue  
Building A Suite 331  
Ft. Collins, Colorado 80526

Alaska Department of Natural Resources,  
Division of Forestry  
Forest Health Program  
550 W 7th Ave #1450  
Anchorage, Alaska 99501