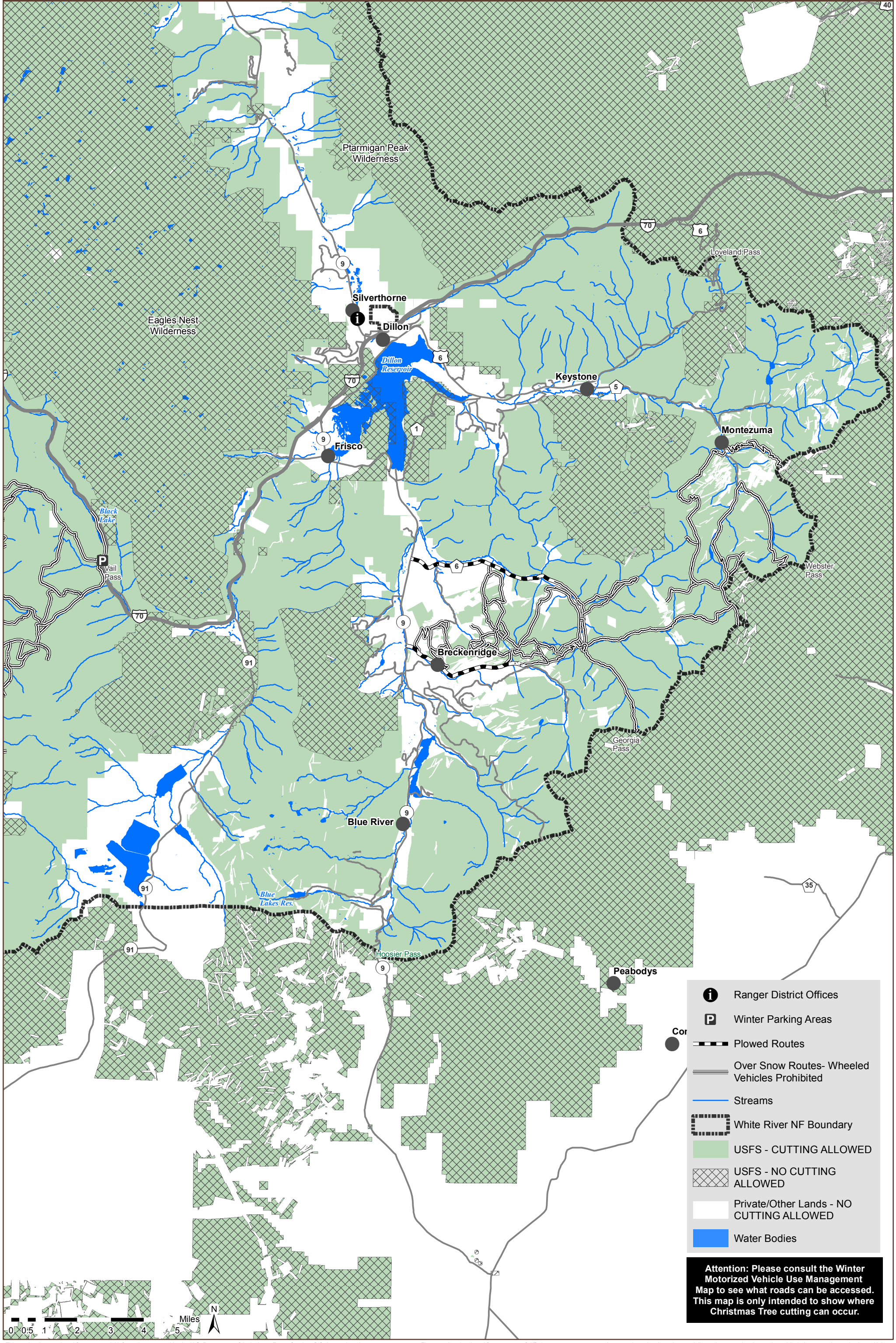




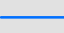




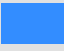


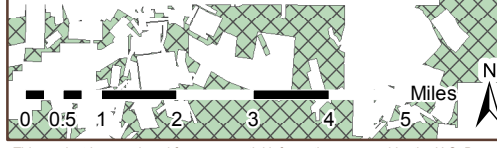
**Attention: Please consult the Winter Motorized Vehicle Use Management Map to see what roads can be accessed. This map is only intended to show where Christmas Tree cutting can occur.**

This product is reproduced from geospatial information prepared by the U.S. Department of Agriculture, Forest Service. GIS data and product accuracy may vary. They may be developed from sources of differing accuracy, accurate only at certain scales, based on modeling or interpretation, incomplete while being created or revised, etc. Using GIS products for purposes other than those for which they were created, may yield inaccurate or misleading results. The Forest Service reserves the right to correct, update, modify, or replace, GIS products based on new inventories, new or revised and if necessary in conjunction with other federal, state or local public agencies or the public in general as required by policy or regulation. Previous recipients of the products may not be notified unless required by policy or regulation. For more information concerning this map, contact the White River National Forest: 900 Grand Avenue, Glenwood Springs, CO 81601.



-  Ranger District Offices
-  Winter Parking Areas
-  Plowed Routes
-  Over Snow Routes- Wheeled Vehicles Prohibited
-  Streams
-  White River NF Boundary
-  USFS - CUTTING ALLOWED
-  USFS - NO CUTTING ALLOWED
-  Private/Other Lands - NO CUTTING ALLOWED
-  Water Bodies

**Attention: Please consult the Winter Motorized Vehicle Use Management Map to see what roads can be accessed. This map is only intended to show where Christmas Tree cutting can occur.**



This product is reproduced from geospatial information prepared by the U.S. Department of Agriculture, Forest Service. GIS data and product accuracy may vary. They may be developed from sources of differing accuracy, accurate only at certain scales, based on modeling or interpretation, incomplete while being created or revised, etc. Using GIS products for purposes other than those for which they were created, may yield inaccurate or misleading results. The Forest Service reserves the right to correct, update, modify, or replace, GIS products based on new inventories, new or revised and if necessary in conjunction with other federal, state or local public agencies or the public in general as required by policy or regulation. Previous recipients of the products may not be notified unless required by policy or regulation. For more information concerning this map, contact the White River National Forest: 900 Grand Avenue, Glenwood Springs, CO 81601.