

INFORMATION SOURCES
Salida Ranger District
5575 Cleora Road
Salida, CO 81201
(719) 539-3591



tread lightly!
Travel and recreate with minimum impact.
Respect the environment and the rights of others.

In accordance with Federal civil rights law and U.S. Department of Agriculture (USDA) civil rights regulations and policies, the USDA, its Agencies, offices, and employees, and institutions participating in or administering USDA programs are prohibited from discriminating based on race, color, national origin, religion, sex, gender identity (including gender expression), sexual orientation, disability, age, marital status, family/parental status, income derived from a public assistance program, political beliefs, or reprisal or retaliation for prior civil rights activity, in any program or activity conducted or funded by USDA (not all bases apply to all programs). Remedies and complaint filing deadlines vary by program or incident.

Persons with disabilities who require alternative means for communication for program information (e.g., Braille, large print, audiotape, American Sign Language, etc.) should contact the responsible Agency or USDA's TARGET Center at (202) 720-2600 (voice and TTY) or contact USDA through the Federal Relay Service at (800) 877-8339. Additionally, program information may be made available in languages other than English.

USDA is an equal opportunity provider, employer, and lender.

PURPOSE AND CONTENTS OF THIS MAP
The designations shown on this motor vehicle travel map (MVTM) were made by the responsible official pursuant to 36 CFR 212.51, are effective as of the date on the front cover of this MVTM, and will remain in effect until superseded by the next year's MVTM.

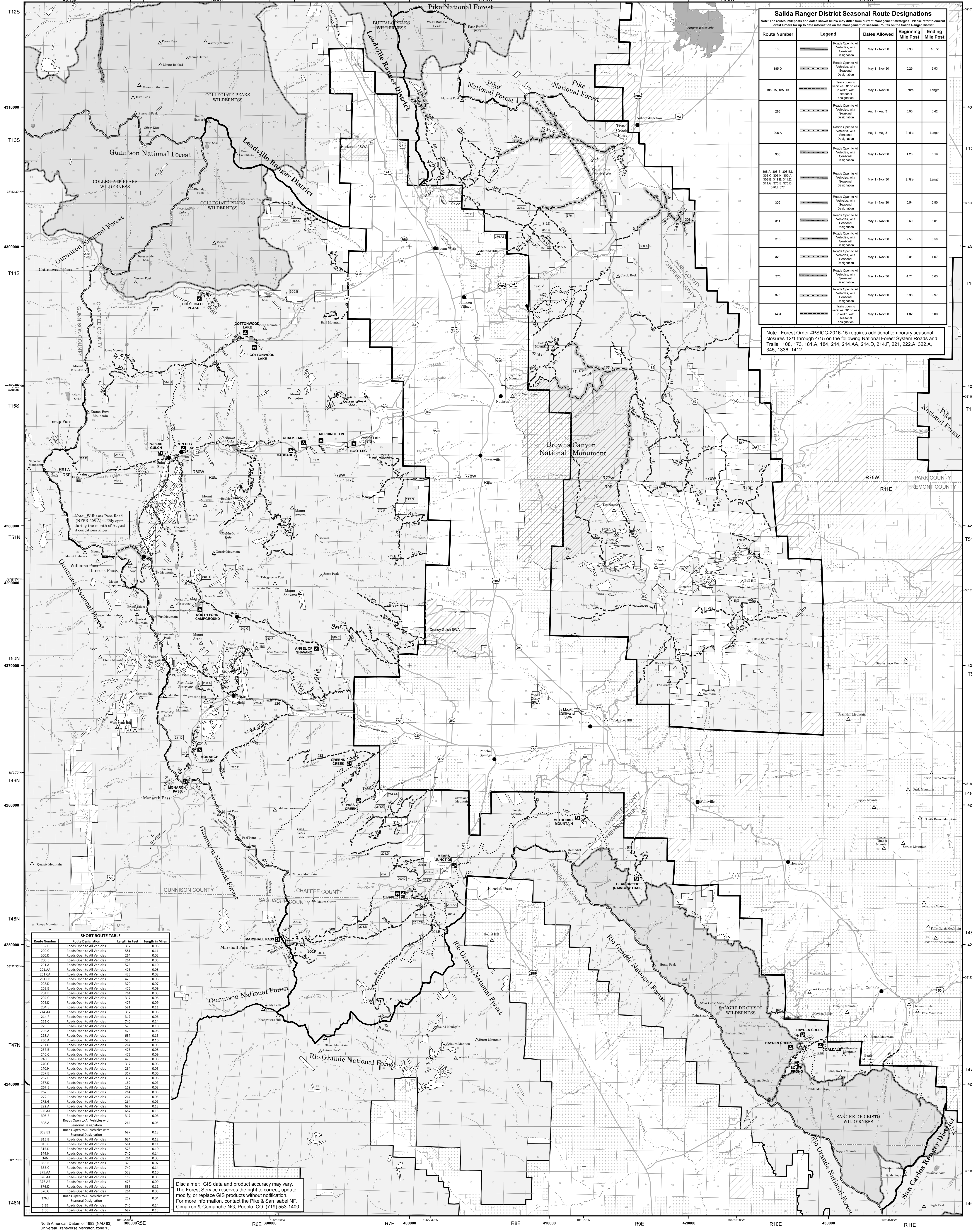
Legend
Roads Open to All Vehicles
Trails Open to Vehicles 50" or Less in Width
Trails Open to Motorcycles Only
Seasonal Designation
Highways, US, State, County, Other

OPERATOR RESPONSIBILITIES
Operating a motor vehicle on National Forest System roads, National Forest System trails, and in areas on National Forest System lands carries a greater responsibility than operating that vehicle in a city or other developed setting. Not only must you know and follow all applicable traffic laws, you need to show concern for the environment as well as other forest users.

EXPLANATION OF LEGEND ITEMS
Roads Open to All Vehicles:
Roads open to all motor vehicles, including smaller off-highway vehicles that may not be licensed for highway use (not to exceed or overweight vehicles under State traffic law).

PROHIBITIONS
It is prohibited to possess or operate a motor vehicle on National Forest System lands on the Salida Ranger District other than in accordance with these designations (36 CFR 261.13).
Violations of 36 CFR 261.13 are subject to a fine of up to \$5,000 or imprisonment for up to 6 months or both (18 U.S.C. 3571(e)). This prohibition applies regardless of the presence or absence of signs.

SALIDA RANGER DISTRICT BLANKET STATEMENTS FOR TRAVEL MANAGEMENT
Map Revisions
The designations shown on this motor vehicle use map will remain in effect until revised with the publication of a new map. In January of each year, this motor vehicle use map will either be revised with the publication of a new map, or it will be validated for the next year by the Ranger District with a red stamp that says: "Valid for Year 20__".



SHORT ROUTE TABLE
Route Number Route Designation Length in Feet Length in Miles
200C Roads Open to All Vehicles 581 0.11
200D Roads Open to All Vehicles 264 0.05

Disclaimer: GIS data and product accuracy may vary. The Forest Service reserves the right to correct, update, modify, or replace GIS products without notification. For more information, contact the Pike & San Isabel NF, Cimarron & Comanche NG, Pueblo, CO. (719) 553-1400.

Salida Ranger District Seasonal Route Designations
Route Number Legend Dates Allowed Beginning Mile Post Ending Mile Post
155 Roads Open to All Vehicles, with Seasonal Designation May 1 - Nov 30 7.96 10.72

Note: Forest Order #PSICC-2016-15 requires additional temporary seasonal closures 1217 through 4/15 on the following National Forest System Roads and Trails: 108, 173, 181 A, 184, 214, 214 AA, 214 D, 214 F, 221, 222 A, 322 A, 345, 1336, 1412.