



Timber Mountain DxP Timber Sale Area Map

Newport Ranger District, Colville National Forest

Legend

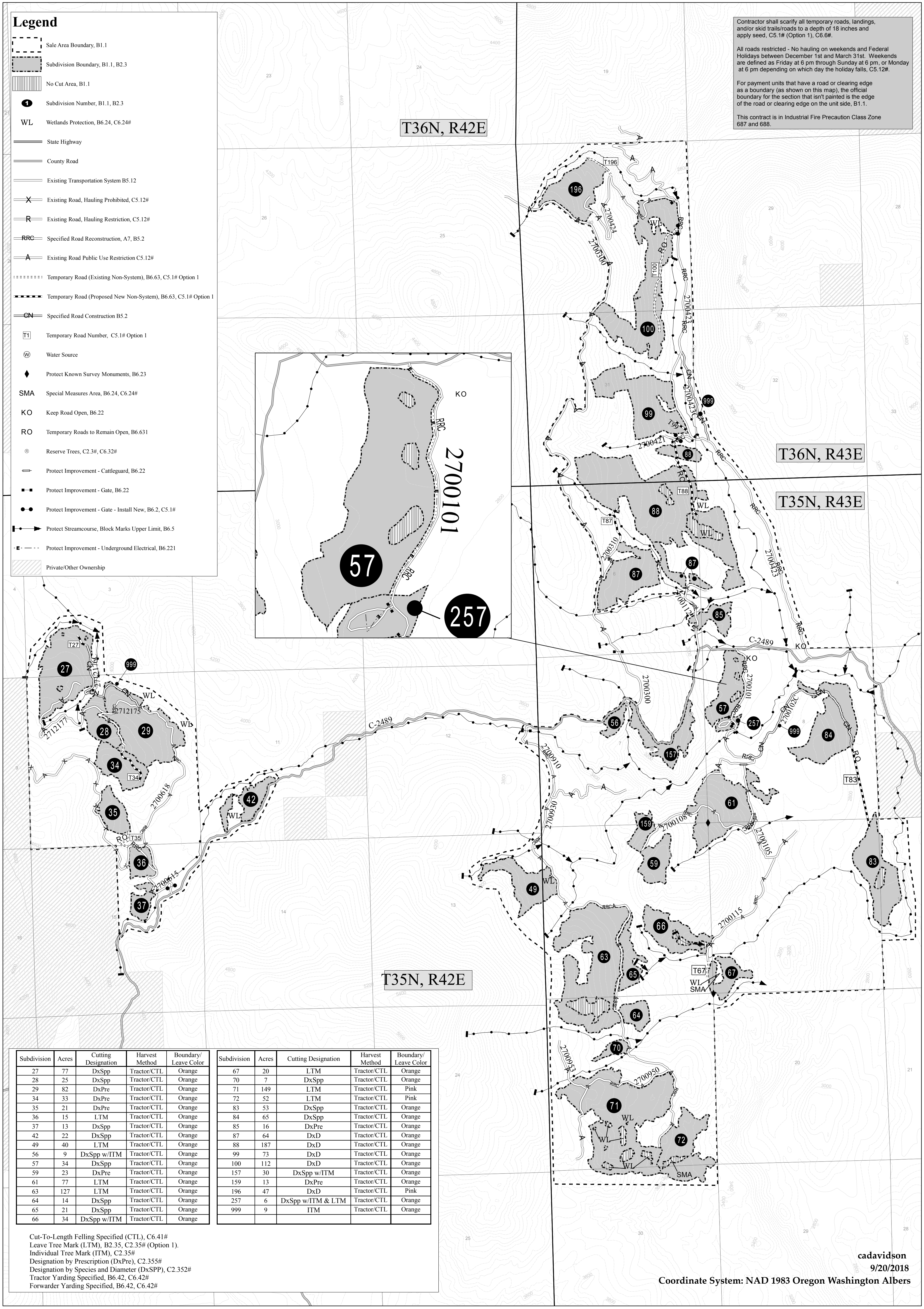
- Sale Area Boundary, B1.1
- Subdivision Boundary, B1.1, B2.3
- No Cut Area, B1.1
- Subdivision Number, B1.1, B2.3
- Wetlands Protection, B6.24, C6.24#
- State Highway
- County Road
- Existing Transportation System B5.12
- Existing Road, Hauling Prohibited, C5.12#
- Existing Road, Hauling Restriction, C5.12#
- Specified Road Reconstruction, A7, B5.2
- Existing Road Public Use Restriction C5.12#
- Temporary Road (Existing Non-System), B6.63, C5.1# Option 1
- Temporary Road (Proposed New Non-System), B6.63, C5.1# Option 1
- Specified Road Construction B5.2
- Temporary Road Number, C5.1# Option 1
- Water Source
- Protect Known Survey Monuments, B6.23
- SMA** Special Measures Area, B6.24, C6.24#
- KO** Keep Road Open, B6.22
- RO** Temporary Roads to Remain Open, B6.631
- Reserve Trees, C2.3#, C6.32#
- Protect Improvement - Cattleguard, B6.22
- Protect Improvement - Gate, B6.22
- Protect Improvement - Gate - Install New, B6.2, C5.1#
- Protect Streamcourse, Block Marks Upper Limit, B6.5
- Protect Improvement - Underground Electrical, B6.221
- Private/Other Ownership

Contractor shall scarify all temporary roads, landings, and/or skid trails/roads to a depth of 18 inches and apply seed, C5.1# (Option 1), C6.6#.

All roads restricted - No hauling on weekends and Federal Holidays between December 1st and March 31st. Weekends are defined as Friday at 6 pm through Sunday at 6 pm, or Monday at 6 pm depending on which day the holiday falls, C5.12#.

For payment units that have a road or clearing edge as a boundary (as shown on this map), the official boundary for the section that isn't painted is the edge of the road or clearing edge on the unit side, B1.1.

This contract is in Industrial Fire Precaution Class Zone 687 and 688.



Subdivision	Acres	Cutting Designation	Harvest Method	Boundary/Leave Color	Subdivision	Acres	Cutting Designation	Harvest Method	Boundary/Leave Color
27	77	DxSpp	Tractor/CTL	Orange	67	20	LTM	Tractor/CTL	Orange
28	25	DxSpp	Tractor/CTL	Orange	70	7	DxSpp	Tractor/CTL	Orange
29	82	DxPre	Tractor/CTL	Orange	71	149	LTM	Tractor/CTL	Orange
34	33	DxPre	Tractor/CTL	Orange	72	52	LTM	Tractor/CTL	Pink
35	21	DxPre	Tractor/CTL	Orange	83	53	DxSpp	Tractor/CTL	Orange
36	15	LTM	Tractor/CTL	Orange	84	65	DxSpp	Tractor/CTL	Orange
37	13	DxSpp	Tractor/CTL	Orange	85	16	DxPre	Tractor/CTL	Orange
42	22	DxSpp	Tractor/CTL	Orange	87	64	DxD	Tractor/CTL	Orange
49	40	LTM	Tractor/CTL	Orange	88	187	DxD	Tractor/CTL	Orange
56	9	DxSpp w/ITM	Tractor/CTL	Orange	99	73	DxD	Tractor/CTL	Orange
57	34	DxSpp	Tractor/CTL	Orange	100	112	DxD	Tractor/CTL	Orange
59	23	DxPre	Tractor/CTL	Orange	157	30	DxSpp w/ITM	Tractor/CTL	Orange
61	77	LTM	Tractor/CTL	Orange	159	13	DxPre	Tractor/CTL	Orange
63	127	LTM	Tractor/CTL	Orange	196	47	DxD	Tractor/CTL	Pink
64	14	DxSpp	Tractor/CTL	Orange	257	6	DxSpp w/ITM & LTM	Tractor/CTL	Orange
65	21	DxSpp	Tractor/CTL	Orange	999	9	ITM	Tractor/CTL	Orange
66	34	DxSpp w/ITM	Tractor/CTL	Orange					

Cut-To-Length Felling Specified (CTL), C6.41#
 Leave Tree Mark (LTM), B2.35, C2.35# (Option 1).
 Individual Tree Mark (ITM), C2.35#
 Designation by Prescription (DxPre), C2.355#
 Designation by Species and Diameter (DxSPP), C2.352#
 Tractor Yarding Specified, B6.42, C6.42#
 Forwarder Yarding Specified, B6.42, C6.42#