

National Forests and Grasslands in Texas

Hunting Guide

2020-2021 Hunting Season

Texas is home to four national forests that stretch from the urban landscape of Houston to the Louisiana border, and to two national grasslands located north of the Dallas-Fort Worth metroplex.

White-tailed deer is the game of choice in Texas and there's no better place to bag that trophy buck than in the national forests and grasslands.

From mid-September to the end of January is prime hunting season and all hunters and those accompanying them must wear daylight fluorescent orange at any time when hunting, except when hunting turkey or migratory birds.

A minimum of 400 square inches of fluorescent orange must be visible (144 square inches on both the chest and back, and a daylight fluorescent orange cap or hat.)

Contents

Angelina Map.....	3
Davy Crockett Map.....	4
Sabine Map.....	5
Sam Houston Map.....	6
Caddo/LBJ Map.....	7
Safety Notice.....	8
Contacts.....	8

Keep safety in mind when hunting

As gun deer hunting season begins, U.S. Forest Service officials are reminding hunters of guidelines designed to make their hunting trips to national forests safe and enjoyable, while sustaining the health of the forests.

Rains and flooding have damaged many roads in the forests and grasslands. While most roads have been repaired, some remain impassable and are closed. Check with the Ranger's Office to make sure your favorite hunter camp is open.

Hunting season is one of the busiest times in the forest, and safety should always be a primary concern.

Visitors should check their surroundings and be aware of the possibility of falling limbs or trees. Remember, being in the woods is great, but you are responsible for your own safety.

When strong winds kick up, head to a clearing away from potentially falling trees.

Place tents and park vehicles in areas that will not be hit by falling trees and limbs.

Some other safety precautions include:

- Much of the National Forests and Grasslands in Texas are remote, and medical assistance may not be readily available. Cell phones do not work in many areas of the National Forests and Grasslands in Texas. Visitors should take adequate food, water, first aid supplies and other equipment appropriate for the conditions and expected weather.

- Off-Highway Vehicle (OHV) use on the National Forests and Grasslands in Texas is limited to the multiple-use trail on the Sam Houston National Forest. Off-road use of motorized

vehicles of any type is prohibited.

- All hunters and those accompanying them must wear daylight fluorescent orange when hunting, except when hunting at night or when hunting turkey or migratory birds. A minimum of 400 square inches of fluorescent orange must be visible (144 square inches on both the chest and back, and a daylight fluorescent orange cap or hat.)

- Anyone camping or hunting in the Angelina, Davy Crockett, Sabine or Sam Houston National Forest or the Caddo National Grasslands must camp in designated campsites or developed recreation areas from Sept. 1 to Feb. 1.

- When the danger of wildfires is high, make sure all camp fires are in an

area at least three feet in diameter

cleared of all flammable material, and are properly extinguished.

- Hunters using Wildlife Management Areas (WMAs) must purchase the \$48 annual hunting permit from Texas Parks and Wildlife Department to hunt deer, turkey, small game, waterfowl and feral hogs. Wildlife Management Areas in the National Forests and Grasslands in Texas include the entire Sam Houston National Forest, Alabama Creek WMA in the Davy Crockett National Forest, Bannister WMA in the Angelina National Forest, Caddo WMA in the Caddo National Grassland and the Moore Plantation WMA in the Sabine National Forest.

- Regulations vary by county so hunters should refer to the Texas Parks and Wildlife Official Hunting Guide and the Public Hunting Lands booklet for details.

- Portable deer stands are allowed in national forests and grasslands but are limited to 72 hours in one location. To prevent damage to trees, the stands must not be nailed to trees. When hunters do not remove their deer stands, it causes damage to forest land and creates an expensive, time-consuming cleanup.

- Do not park near gates or in areas that would block roads.

- Visit the National Forests and Grasslands in Texas website at www.fs.usda.gov/texas and click on the Hunter Camp Maps link for more information.





**Be Aware,
Be Safe**

- Trees can fall without warning.
- Be aware of your surroundings.
- Wear blaze orange in the woods.
- Make sure campfires are extinguished properly
- Remember, your safety is your responsibility.





Antlerless Deer Permits from TPWD

Each year, the Texas Parks and Wildlife Department (TPWD) inventories deer populations in the national forests in Texas. As needed, the department includes antlerless deer in the annual harvest to seek a balanced population.

Designated areas and the number of permits issued vary from year to year and the number of requests usually exceeds the number of permits available.

Hunting antlerless deer in the national forests in Texas is conducted only within Wildlife Management Areas and only by permit.

For more information on antlerless deer permits, contact your local TPWD office or visit www.tpwd.texas.gov/drawnhts for application information and process instructions.

Game in the Forest

Many game species find favorable habitat in the national forests where timber stands range from recently harvested areas to stands more than 100 years old.

The breaks or “edges” created where different aged stands meet are preferred by many species; so, the observant sportsman learns to recognize stand characteristics and the types of game animals to be found in them.



Where to Find Birds

Mourning doves prefer to feed in areas of open, bare ground with scattered stands of seed-producing weeds. Such conditions are found in recently logged stands where disturbed soil encourages weed growth. Bobwhite quail feed in these same stands and in stands up to five years after cutting, where grassy-weedy vegetation has grown and provides cover. Quail also use adjacent older timber stands for escape cover from predators and hunters.

Woodcock are a fairly common but lightly-hunted winter visitor to the national forests. They prefer dense thickets for protection, but can be found in early morning and late evening feeding in the same young stands as quail.

Most waterfowl hunting associated with the national forests is on the larger reservoirs that lie within or adjacent to them. Sam Rayburn Reservoir is managed by the Corps of Engineers, Toledo Bend Reservoir is managed by Sabine River Authority, and Lake Conroe is under management of the San Jacinto River Authority.

Contact those agencies concerning use of their waters, including the construction of hunting blinds.

Some waterfowl hunting is available in river bottoms during high water periods.

Fishing

Sam Rayburn Reservoir, Toledo Bend Reservoir and Lake Conroe are known for excellent fishing but there are other lakes to challenge anglers.

Some of the larger lakes in the national forests include Red Hill, Ratcliff, Boykin Springs and Double Lake. In the national grasslands, Coffee Mill, Crockett, Fannin, Cottonwood and Black Creek Lake are favorites. Windmill Lake on the LBJ Grasslands is designated a fly fishing only lake. Most of these lakes also have developed recreation areas.

Texas fishing regulations and license requirements apply to all these water

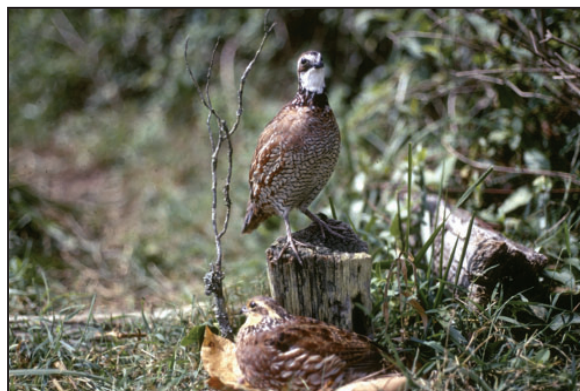


Turkey Hunting

The U.S. Forest Service, Texas Parks and Wildlife Department and the National Wild Turkey Federation are partners in restocking wild turkeys on national forest lands.

The Caddo National Grasslands allow shotgun-only hunting in the spring. The LBJ National Grasslands has a fall and spring season for the Rio Grande turkey. Check the Texas Parks and Wildlife hunting guide for counties in the national forests that allow spring hunting.

Turkey season is closed in Angelina and Jasper counties.



Small Game

Cottontail rabbits can be found in the same habitat as quail. Gray squirrels and fox squirrels are the most popular small game animals in the national forests. Gray squirrels prefer stands of bottomland hardwoods 40 years of age or older. The trees in gray squirrel habitat must be old enough to produce consistent crops of acorns and similar food. Most major rivers and creeks that flow through the national forest have these hardwood stands within their floodplains.

Fox squirrels also prefer older age timber stands; however, they are generally found in the transition zone between the bottomlands and uplands where there is a mix of hardwood and pine, similar to turkey habitat. They can also be found in older pine stands that contain scattered nut-producing trees.

Large Game

Deer hunting is a challenging sport and white-tailed deer can be found throughout the national forests. The season will sometimes determine where you can find small concentrations of deer, such as in hardwood stands during acorn fall.

It is very importance to get to your shooting spot undetected, and don't think going in under the cover of darkness will help. Make sure to use a creek or curtain of forest to cover your entry.

Scattered populations of wild or feral hogs live in the national forests. Although they are not classified as game animals, they provide some limited hunting opportunities, usually incidental to other types of hunting. Hogs are usually found in bottomlands.

Deer Stands

Deer stands may be used in the national forests and grasslands, but they must be portable and cannot be of a type that will deface or harm trees. Deer stands must be removed within 72 hours of placing one in the general forest or in a Wildlife Management Area. Since the forests and grasslands are open to public hunting, hunters cannot maintain exclusive rights to a hunting area.

Game on the Grasslands

The national grasslands provide favorable habitat for some of the small game animals found in the national forests. There is no commercial timber harvesting on the grasslands, and management is directed toward maintaining a stable or relatively non-changing vegetation type.

About 70 percent of the national grasslands is open prairie; the rest is wooded. Most of the wooded areas are in small clumps on the prairie and along the numerous small streams and drainages.

Cottontail rabbits, doves, wild turkeys and bobwhite quail are found throughout the grasslands and are usually hunted in the prairies or along the edge of the woods. Fox squirrels can be found in the woods adjacent to creeks and drainages. Gray squirrels live in some of the bottomland hardwoods of the Caddo National Grasslands.

Baiting

Baiting and hunting over baited areas to attract wildlife is not allowed in the National Forests and Grasslands in Texas.

How to Recognize National Forest Land

Maps commonly show proclaimed national forest boundaries. However, all land within this boundary is not national forest land; some is privately owned. The land shown in green on the maps indicate national forest land.

Red paint and signs mark the boundaries between national forest land and private property. Recognition of these markings and boundary signs helps the visitor to be certain to stay on national forest land.

Visitors should comply with state law and the owner's rules when entering private land.

Entrance (portal) signs. These signs can be seen along major roads entering the national forests, usually on the first tract of government land encountered. Generally, portal signs are not used on low traffic roads.

Welcome signs. These signs are located on or just inside the boundaries or individual tracts of national forest land where the road enters. The sign will be oriented so that the land behind the sign is public land. Generally, they are not used on dead-end or woods roads or on small blocks of public land.

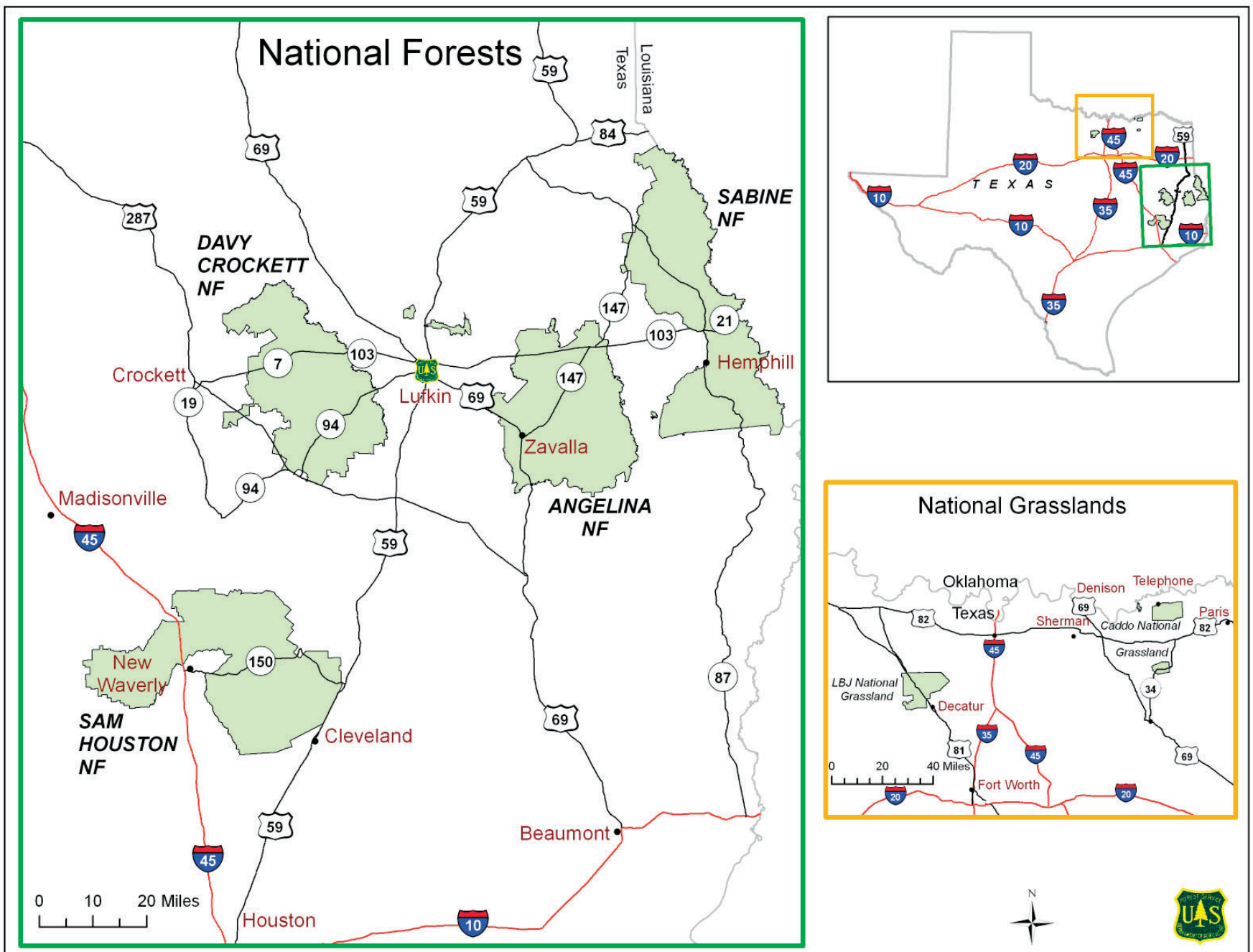
Upon entering woods on public land, welcome signs will not be present and the visitor should rely on property line markings and boundary signs.

Property line marking and boundary signs. The boundaries of individual national forest tracts adjacent to other ownerships are marked with brown and yellow property boundary signs.

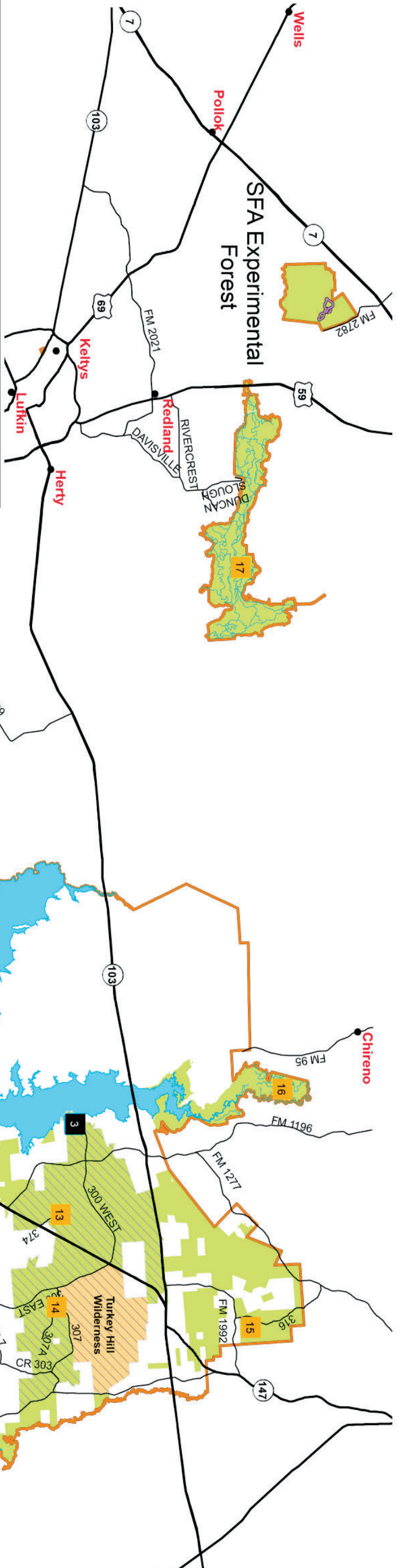
The small metal boundary signs are fastened either to trees or posts located on the boundary line and at road crossings, and the signs are placed so that public land is behind the sign. Red paint spots on trees define the boundary line through woods.

While the majority of boundaries are identified and posted, occasionally visitors may encounter an area where signs have been vandalized or lines are not marked. In these cases, visitors should be alert to avoid accidentally trespassing on private land.





Angelina National Forest



During hunting season, camping is permitted only in developed recreation areas or designated hunter camps.

Deer Processing Allowed	Map Number	Road Number	Name
✓	1	NFSR 313	Boykin Springs (Fee Area)
✓	2	NFSR 336	Caney Creek (Fee Area)
✓	3	FM 2923	Townsend (Fee Area)
Designated Hunter Camps			
✓	4	NFSR 350C	NFSR 350C
✓	5	NFSR 308	NFSR 308
✓	6	NFSR 312	NFSR 312
✓	7	NFSR 317	NFSR 317
✓	8	NFSR 302	NFSR 302
✓	9	NFSR 303	Bouton Lake
✓	10	NFSR 327	Sexton Pond
✓	11	Jasper County Line Road	Jasper County Line Road
✓	12	NFSR 349	NFSR 349
✓	13	NFSR 374	NFSR 374
✓	14	NFSR 307A	NFSR 307A
✓	15	NFSR 316A	NFSR 316A
✓	16	Angelina River	Boat Access Only
✓	17	Attoyac Bayou	Boat Access Only

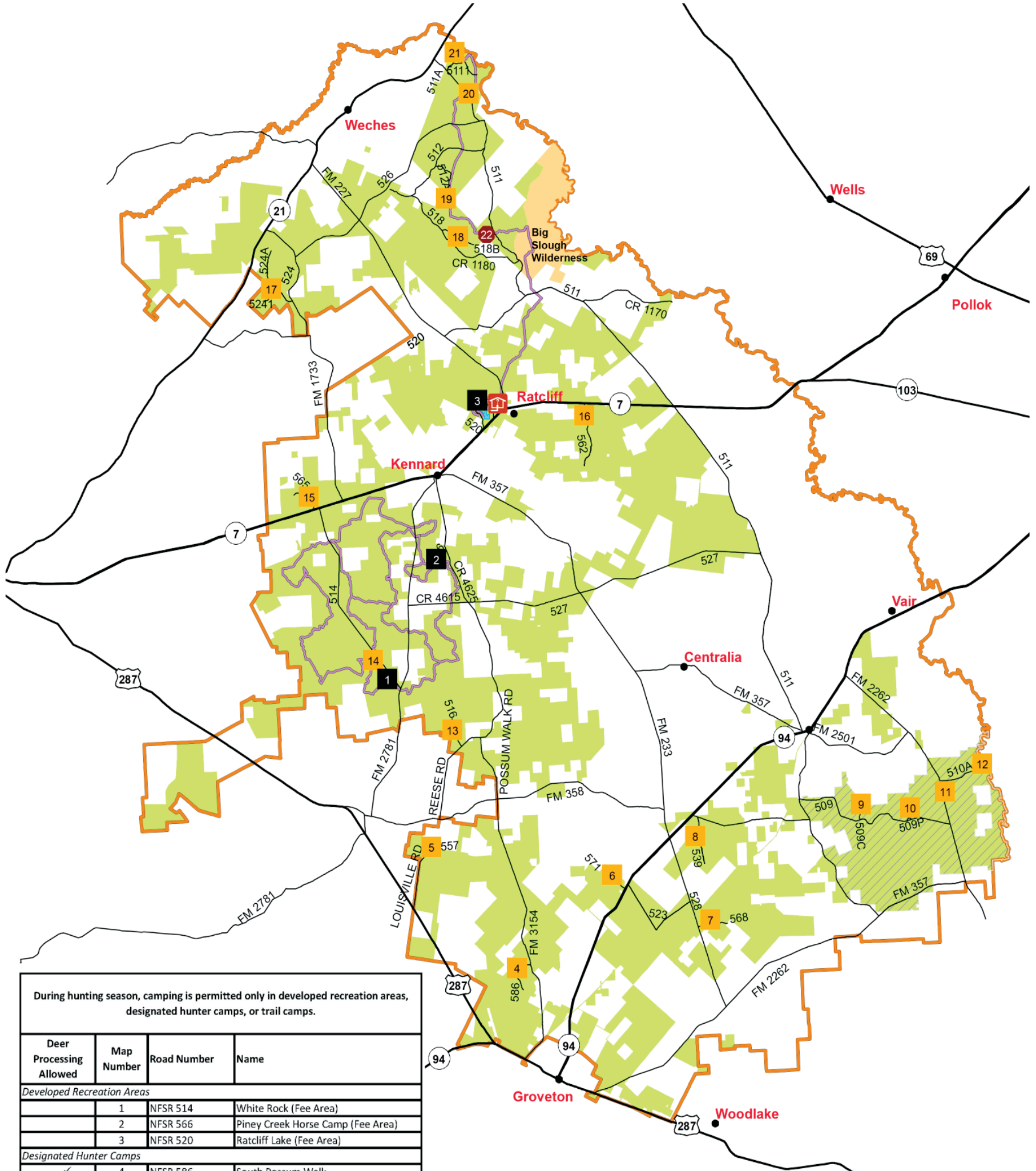
Legend

- Developed Recreation Area
- Designated Hunter Camp
- District Office
- Trail
- Wilderness
- Bannister Wildlife Management Area
- Sam Rayburn Reservoir
- USDA Forest Service



This map is a general guide and does not show exact boundaries or all roads. It is the user's responsibility to know his or her location in the forest. Users should be aware that private property exists within the Forest Service boundary. Please respect our neighbors' rights. Check with the district ranger office where you hunt regarding special regulations or boundary locations. Call District Office for facility/trail/road closures.

Davy Crockett National Forest

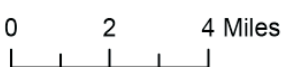


During hunting season, camping is permitted only in developed recreation areas, designated hunter camps, or trail camps.

Deer Processing Allowed	Map Number	Road Number	Name
Developed Recreation Areas			
	1	NFSR 514	White Rock (Fee Area)
	2	NFSR 566	Piney Creek Horse Camp (Fee Area)
	3	NFSR 520	Ratcliff Lake (Fee Area)
Designated Hunter Camps			
✓	4	NFSR 586	South Possum Walk
✓	5	NFSR 557	Pennington
✓	6	NFSR 571	Piney
✓	7	NFSR 568	Longleaf
✓	8	NFSR 539	Centerville
✓	9	NFSR 509C	Rock Hole
✓	10	NFSR 509P	Sandy Creek
✓	11	FM 2262	Slay Creek
✓	12	NFSR 510A	Holly Bluff
✓	13	NFSR 516	County Line Camp
✓	14	NFSR 514D	White Rock Horse Camp
✓	15	NFSR 565	Raines Morgan
✓	16	NFSR 562	Brushy Camp
✓	17	NFSR 524A/5241	Pine Springs
✓	18	NFSR 518B	Merkel Creek
✓	19	4 C Hiking Trail	Pond Camp
✓	20	NFSR 511	Neches Bluff #2
✓	21	NFSR 511A/5111	Neches Bluff
Trail Camps (Trail Access Only)			
	22	4 C Hiking Trail	Walnut Creek Camp

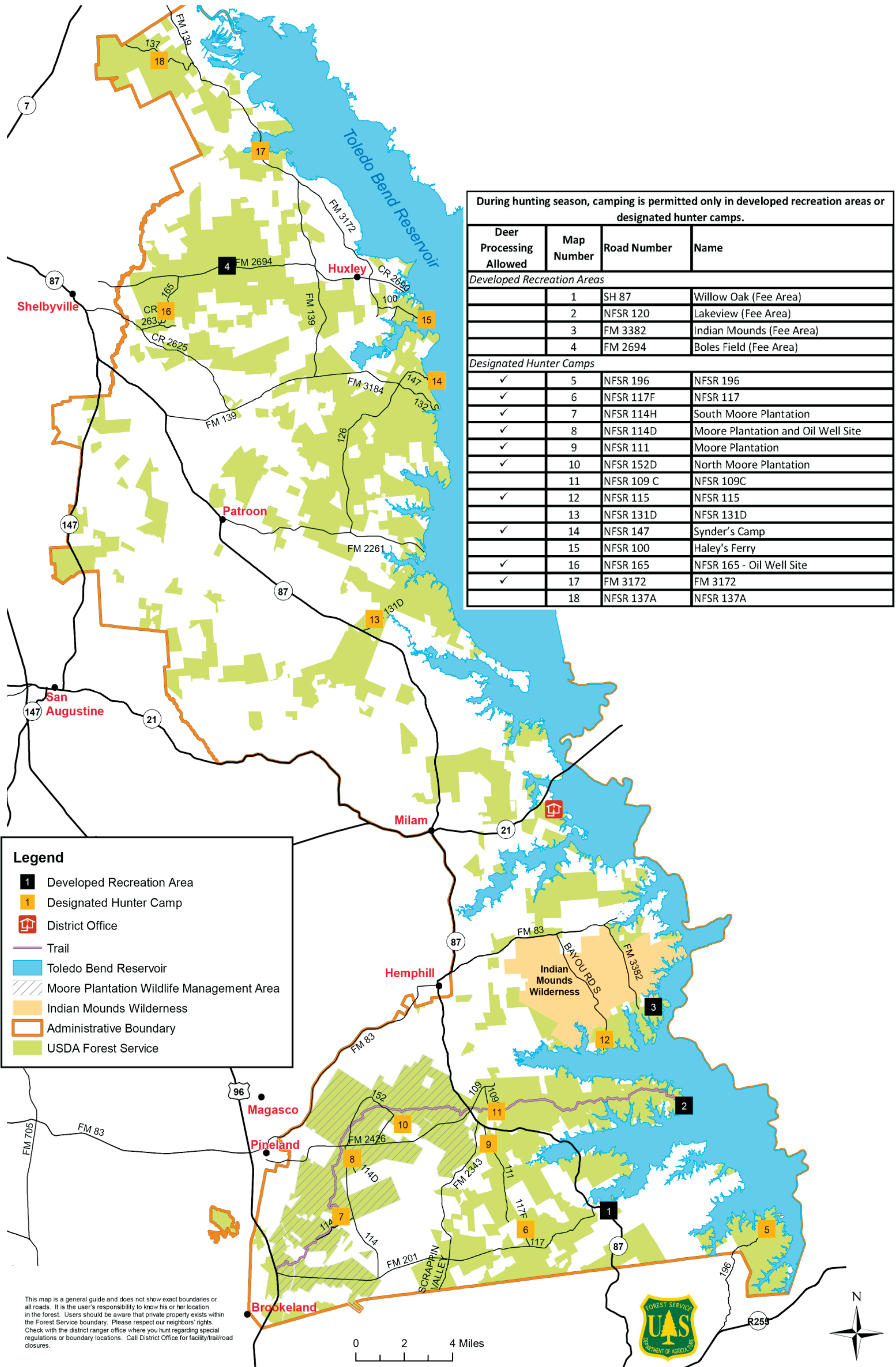
Legend

- Developed Recreation Area
- Designated Hunter Camp
- Trail Camp
- District Office
- Trail
- Ratcliff Lake
- Alabama Creek Wildlife Management Area
- Big Slough Wilderness
- Administrative Boundary
- USDA Forest Service



This map is a general guide and does not show exact boundaries or all roads. It is the user's responsibility to know his or her location in the forest. Users should be aware that private property exists within the Forest Service boundary. Please respect our neighbors' rights. Check with the district ranger office where you hunt regarding special regulations or boundary locations. Call District Office for facility/trail/road closures.

Sabine National Forest



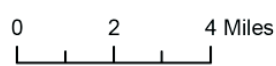
During hunting season, camping is permitted only in developed recreation areas or designated hunter camps.

Deer Processing Allowed	Map Number	Road Number	Name
Developed Recreation Areas			
	1	SH 87	Willow Oak (Fee Area)
	2	NFSR 120	Lakeview (Fee Area)
	3	FM 3382	Indian Mounds (Fee Area)
	4	FM 2694	Boles Field (Fee Area)
Designated Hunter Camps			
✓	5	NFSR 196	NFSR 196
✓	6	NFSR 117F	NFSR 117
✓	7	NFSR 114H	South Moore Plantation
✓	8	NFSR 114D	Moore Plantation and Oil Well Site
✓	9	NFSR 111	Moore Plantation
✓	10	NFSR 152D	North Moore Plantation
	11	NFSR 109 C	NFSR 109C
✓	12	NFSR 115	NFSR 115
	13	NFSR 131D	NFSR 131D
✓	14	NFSR 147	Synder's Camp
	15	NFSR 100	Haley's Ferry
✓	16	NFSR 165	NFSR 165 - Oil Well Site
✓	17	FM 3172	FM 3172
	18	NFSR 137A	NFSR 137A

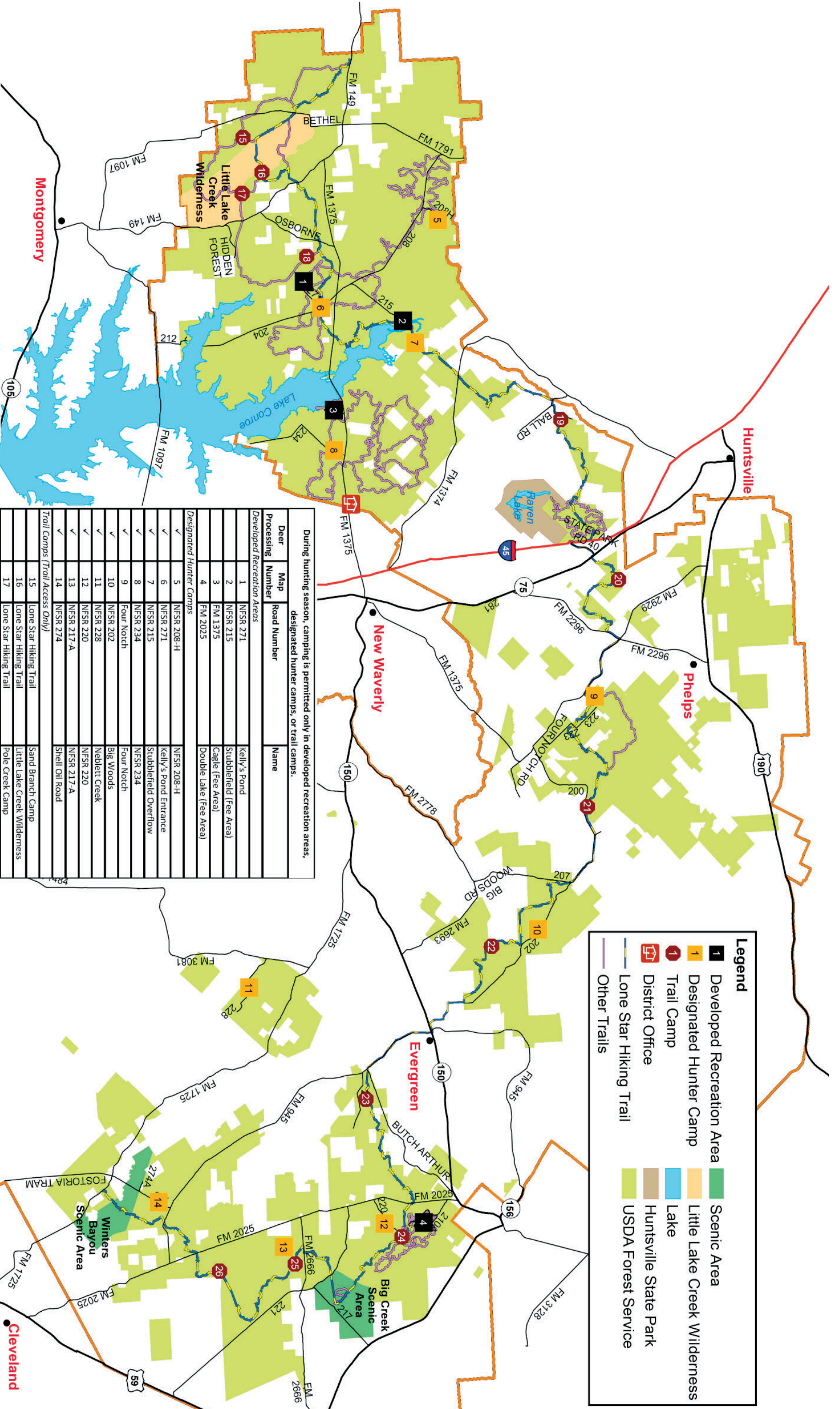
Legend

- 1 Developed Recreation Area
- 1 Designated Hunter Camp
- District Office
- Trail
- Toledo Bend Reservoir
- Moore Plantation Wildlife Management Area
- Indian Mounds Wilderness
- Administrative Boundary
- USDA Forest Service

This map is a general guide and does not show exact boundaries or all roads. It is the user's responsibility to know his or her location in the forest. Users should be aware that private property exists within the Forest Service boundary. Please respect our neighbors' rights. Check with the district ranger office where you hunt regarding special regulations or boundary locations. Call District Office for facility/trail/road closures.



Sam Houston National Forest



Legend

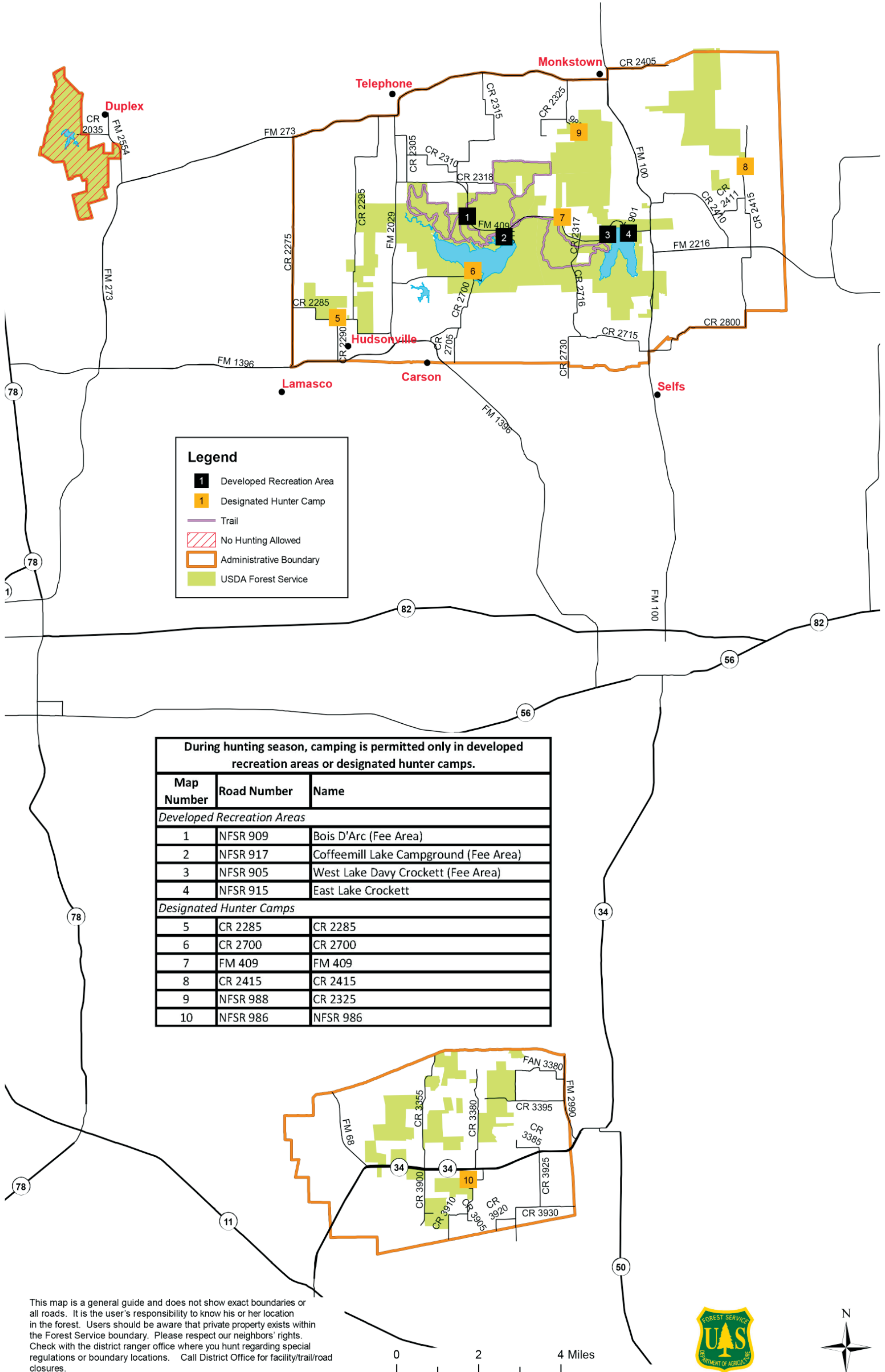
- 1 Developed Recreation Area
- 2 Scenic Area
- 3 Designated Hunter Camp
- 4 Little Lake Creek Wilderness
- 5 Trail Camp
- 6 Lake
- 7 District Office
- 8 Huntsville State Park
- 9 Lone Star Hiking Trail
- 10 USDA Forest Service
- 11 Other Trails

During hunting season, camping is permitted only in developed recreation areas, designated hunter camps, or trail camps.

Deer Processing Number	Map Road Number	Name
1	NFSR 271	Kelly's Pond
2	NFSR 215	Stubblefield (Free Area)
3	FM 1375	Cagle (Free Area)
4	FM 2025	Double Lake (Free Area)
Designated Hunter Camps		
5	NFSR 208-H	NFSR 208-H
6	NFSR 271	Kelly's Pond Entrance
7	NFSR 215	Stubblefield Overflow
8	NFSR 234	NFSR 234
9	Four Notch	Four Notch
10	NFSR 202	Big Woods
11	NFSR 228	Neblett Creek
12	NFSR 220	NFSR 220
13	NFSR 217-A	NFSR 217-A
14	NFSR 274	Shell Oil Road
Trail Camps (Trail Access Only)		
15	Lone Star Hiking Trail	Sand Branch Camp
16	Lone Star Hiking Trail	Little Lake Creek Wilderness
17	Lone Star Hiking Trail	Pole Creek Camp
18	Lone Star Hiking Trail	Caney Creek Camp
19	Lone Star Hiking Trail	West Huntsville
20	Lone Star Hiking Trail	Phelps Camp
21	Lone Star Hiking Trail	East 4 Notch Camp
22	Lone Star Hiking Trail	Big Woods Trail Camp
23	Lone Star Hiking Trail	Magnolia Camp
24	Lone Star Hiking Trail	Double Lake Trail Camp
25	Lone Star Hiking Trail	Tarkington Camp
26	Lone Star Hiking Trail	Mercy

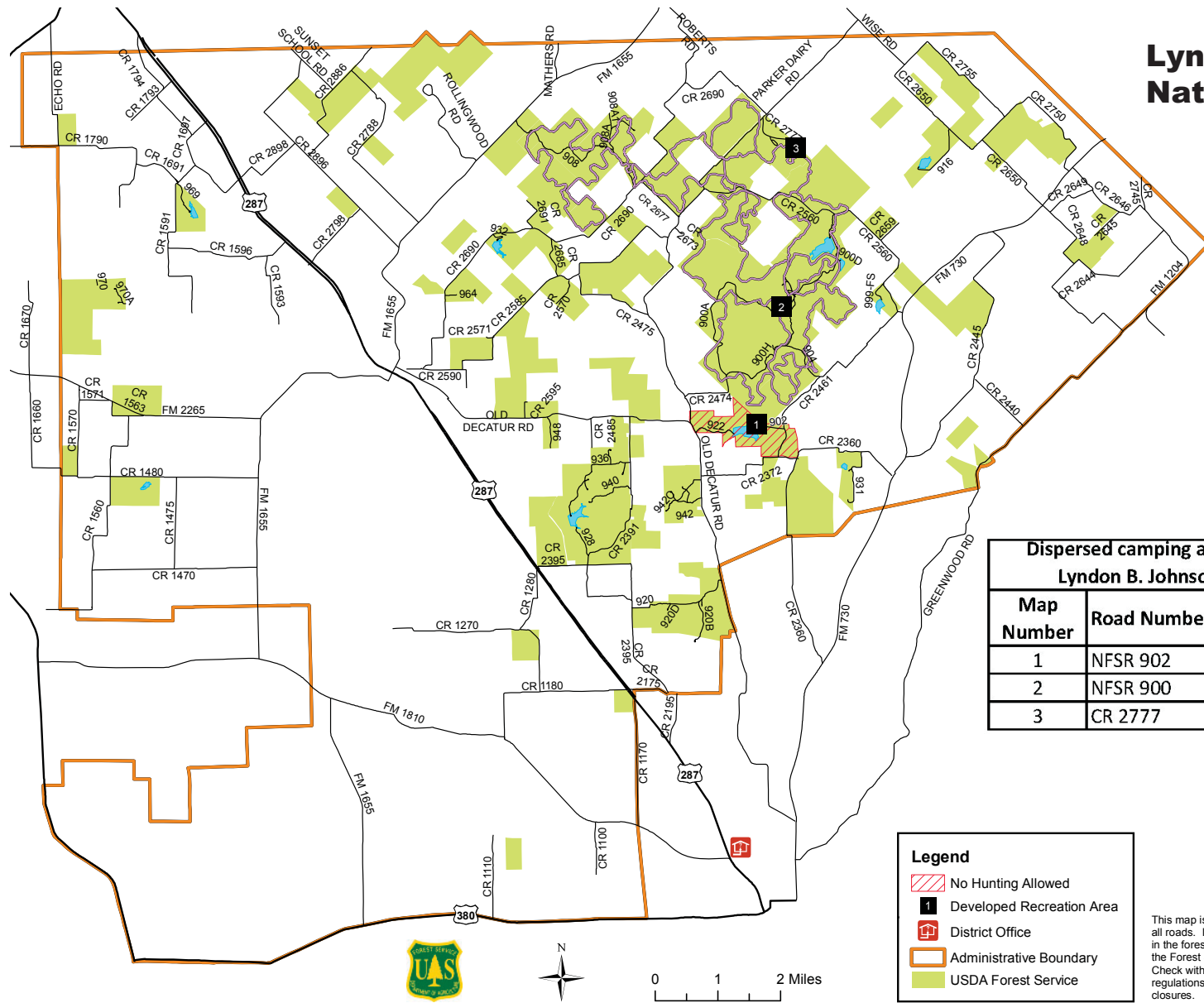
This map is a general guide and does not show exact boundaries or all roads. It is the user's responsibility to know his or her location in the forest. Users should be aware that private property exists within the Forest Service boundary. Please respect our neighbors' rights. Check with the district ranger office where you hunt regarding special regulations or boundary locations. Call District Office for facility/trail/road closures.

Caddo National Grasslands



This map is a general guide and does not show exact boundaries or all roads. It is the user's responsibility to know his or her location in the forest. Users should be aware that private property exists within the Forest Service boundary. Please respect our neighbors' rights. Check with the district ranger office where you hunt regarding special regulations or boundary locations. Call District Office for facility/trail/road closures.





Lyndon B. Johnson National Grassland

Dispersed camping allowed year round on the Lyndon B. Johnson National Grassland.

Map Number	Road Number	Name
1	NFSR 902	Black Creek (Fee Area)
2	NFSR 900	Tadra Point (Fee Area)
3	CR 2777	Valley View (Fee Area)

Legend

- No Hunting Allowed
- Developed Recreation Area
- District Office
- Administrative Boundary
- USDA Forest Service

This map is a general guide and does not show exact boundaries or all roads. It is the user's responsibility to know his or her location in the forest. Users should be aware that private property exists within the Forest Service boundary. Please respect our neighbors' rights. Check with the district ranger office where you hunt regarding special regulations or boundary locations. Call District Office for facility/trail/road closures.



Contact Us

www.fs.usda.gov/texas



Angelina
National Forest
111 Walnut Ridge Road
Zavalla, TX 75980
936-897-1068



Davy Crockett
National Forest
18551 Hwy 7 East
Kennard, TX 75847
936-655-2299



Sabine
National Forest
5050 Hwy 21 East
Hemphill, TX 75948
409-625-1940
Toll Free 866-235-1750



Sam Houston
National Forest
394 FM 1375 West
New Waverly, TX 77358
936-344-6205
Toll Free 888-361-6908



Caddo/LBJ
National Grasslands
1400 North Hwy. 287
Decatur, TX 76234
940-627-5475



Forest Supervisor's
Office
National Forests &
Grasslands in Texas
2221 North Raguet St.
Lufkin, TX 75904
936-639-8501
For TTY: call 711 to be
connected to a Forest
Service number



Sam Rayburn Reservoir
U.S. Army Corps
of Engineers
Route 3, Box 486
Jasper, TX 75951
409-384-5716



Toledo Bend Reservoir
Sabine River Authority
Route 1, Box 270
Burkeville, TX 75932
409-565-2273



**Texas Parks & Wildlife
Department**
Antlerless Deer
Permit Questions
936-569-8547

District Office
Rt. 2 Box 535
Jasper, TX 75951
409-384-9572

District Office
2122 Old Henderson Hwy.
Tyler, TX 75702
903-593-5077



Be Aware, Be Safe

- Trees can fall without warning.
- Be aware of your surroundings.
- Wear blaze orange in the woods.
- Make sure campfires are extinguished properly
- Remember, your safety is your responsibility.

Safety Notice

All hunters and those accompanying them must wear daylight fluorescent orange at any time when hunting, except when hunting turkey or migratory birds.

A minimum of 400 square inches of fluorescent orange must be visible (144 square inches on both the chest and back, and a daylight fluorescent orange cap or hat.)

All camping in the Angelina, Davy Crockett, Sabine or Sam Houston National Forest or the Caddo National Grasslands must be in designated campsites or developed recreation areas from Sept. 15 through Feb. 1.

Hunters using the wildlife management areas (WMAs) are required to have the \$48 annual hunting permit to hunt deer, turkey, small game, waterfowl and feral hogs.

"It's the hunter's responsibility to know the regulations and game limits while hunting in national forests and grasslands," said Chris Crain, U.S. Forest Service patrol captain. "Hunters should check bag limits for the county where they are hunting and refer to this year's hunting booklets for information to avoid citations. No baiting for wildlife or hunting over baited areas is allowed on the National Forests and Grasslands in Texas."

Portable deer stands are allowed in national forests and grasslands and are limited to 72 hours in one location. To prevent damage to trees, the stands must not be nailed to trees. When hunters fail to remove their deer stands, it causes damage to forest land and creates an expensive, time-consuming cleanup.

Vehicles should not be parked near gates or in areas that would impede traffic and block roads.

For additional information on this year's hunting season, please contact the Forest Service District Ranger offices.

Hunters may also visit the National Forests and Grasslands in Texas website at www.fs.fed.usda.gov/texas and review information under the "Hunting 2012-2013" link.

Wildlife Management Areas

Five Wildlife Management Areas (WMAs) are designated in the National Forests and Grasslands in Texas in cooperation with the Texas Parks and Wildlife Department.

Hunting is allowed in WMAs but the rules and regulations are slightly different and hunters must have the appropriate hunting permit from the Texas Parks and Wildlife Department or any location that sells state hunting license. Be aware of boundaries.

The WMAs are:

Angelina National Forest	
Bannister	25,658 acres
Davy Crockett National Forest	
Alabama Creek	14,561 acres
Sabine National Forest	
Moore Plantation	26,455 acres
Caddo National Grassland	
Caddo	16,150 acres
Sam Houston National Forest	
Sam Houston	162,984 acres



Off-Highway Vehicles

Off-highway vehicles are only allowed on designated trails.

The Sam Houston National Forest has the only designated OHV trail.



Wilderness Areas

Wilderness areas are managed to protect their character and provide great opportunities for hunting, camping, fishing, hiking and other recreational activities. Roads in wilderness areas are closed and motorized vehicles and equipment are prohibited.

The five wilderness areas in the National Forests in Texas are:

Angelina National Forest	
Turkey Hill	5,473 acres
Upland Island	13,331 acres
Davy Crockett National Forest	
Big Slough	3,639 acres
Sabine National Forest	
Indian Mounds	12,369 acres
Sam Houston National Forest	
Little Lake Creek	3,855 acres

Specific information, regulations, permit applications and maps of Wildlife Management Areas are available from the U.S. Forest Service or the Texas Parks and Wildlife Department.

Know the Rules

Hunting rules and regulations are issued by the State of Texas on a county-by-county basis. Regulation booklets are available where hunting licenses are sold and at Texas Parks and Wildlife Department offices. The rules in this guide are general in scope. Contact district ranger offices for more detailed, local rules and regulations.

Target Practice

It is legal to target shoot in the general forest, with the exception of the Caddo-LBJ National Grasslands, as long as you do not shoot from, down, or across a road; you have a sufficient backstop (not a live tree); and pick up your trash (targets, empty shells, etc.) when you leave. Target shooting is prohibited in the Wildlife Management Areas on all units of the NFGT: Angelina NF, Davy Crockett NF, Sabine NF, Sam Houston NF, Caddo-LBJ NG.

Frequently Asked Questions

For more information on hunting in Texas, visit

www.fs.usda.gov/goto/texas/hunting-faq

Camping

Developed recreation areas offer conveniences such as showers, restrooms and picnic facilities. Primitive camping is allowed except in designated scenic areas or where otherwise prohibited. During hunting season, camping is permitted only in designated hunter camps or in developed recreation areas. Contact ranger offices for more information on camp locations.

Maps

Maps and general information about the National Forests and Grasslands in Texas can be obtained from ranger offices or the forest supervisor's office. Order forms are available on the Web at: www.fs.usda.gov/texas and click on the maps link. Or call 936-639-8501 for information.

Snakes and Insects

Copperhead, Canebrake rattlesnake, Cottonmouth, Coral and Pigmy rattlesnake are poisonous snakes native to this area. Insect repellent is recommended to protect against mosquitoes, ticks and chiggers.

Leave No Trace

When you leave your camp, please be courteous and take your trash with you.

The Leave No Trace principles are:

1. Plan Ahead and Prepare
2. Travel and Camp on Durable Surfaces
3. Dispose of Waste Properly
4. Leave What You Find
5. Minimize Campfire Impacts
6. Respect Wildlife
7. Be Considerate of Other Visitors

In accordance with Federal civil rights law and U.S. Department of Agriculture (USDA) civil rights regulations and policies, the USDA, its Agencies, offices, and employees, and institutions participating in or administering USDA programs are prohibited from discriminating based on race, color, national origin, religion, sex, gender identity (including gender expression), sexual orientation, disability, age, marital status, family/parental status, income derived from a public assistance program, political beliefs, or reprisal or retaliation for prior civil rights activity, in any program or activity conducted or funded by USDA (not all bases apply to all programs). Remedies and complaint filing deadlines vary by program or incident. Persons with disabilities who require alternative means of communication for program information (e.g., Braille, large print, audiotape, American Sign Language, etc.) should contact the responsible Agency or USDA's TARGET Center at (202) 720-2600 (voice and TTY) or contact USDA through the Federal Relay Service at (800) 877-8339. Additionally, program information may be made available in languages other than English. To file a program discrimination complaint, complete the USDA Program Discrimination Complaint Form, AD-3027, found online at www.ascr.usda.gov/complaint_filing_cust.html and at any USDA office or write a letter addressed to USDA and provide in the letter all of the information requested in the form. To request a copy of the complaint form, call (866) 632-9992. Submit your completed form or letter to USDA by: (1) mail: U.S. Department of Agriculture, Office of the Assistant Secretary for Civil Rights, 1400 Independence Avenue, SW, Washington, D.C. 20250-9410; (2) fax: (202) 690-7442; or (3) email: program.intake@usda.gov. USDA is an equal opportunity provider, employer, and lender.