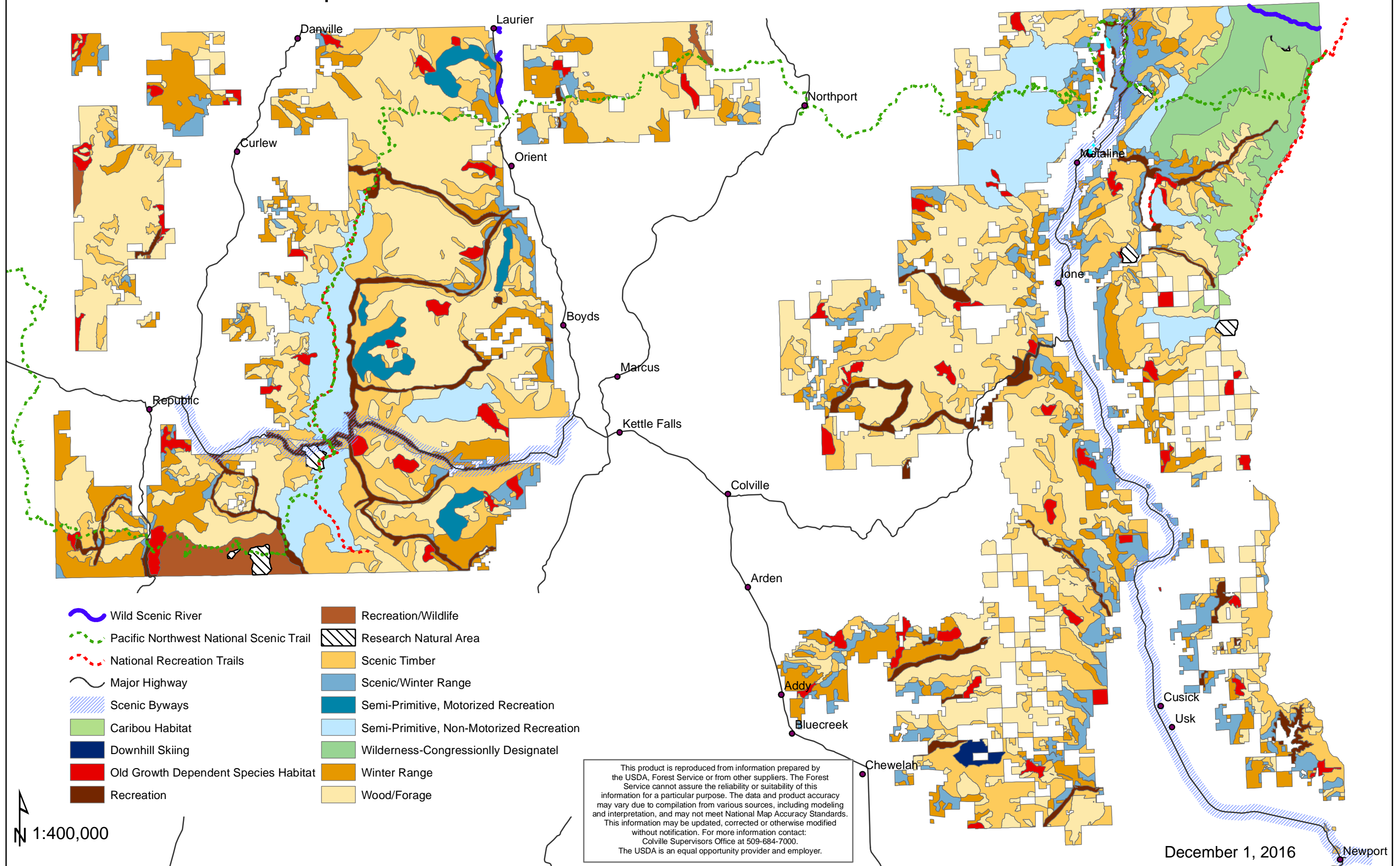
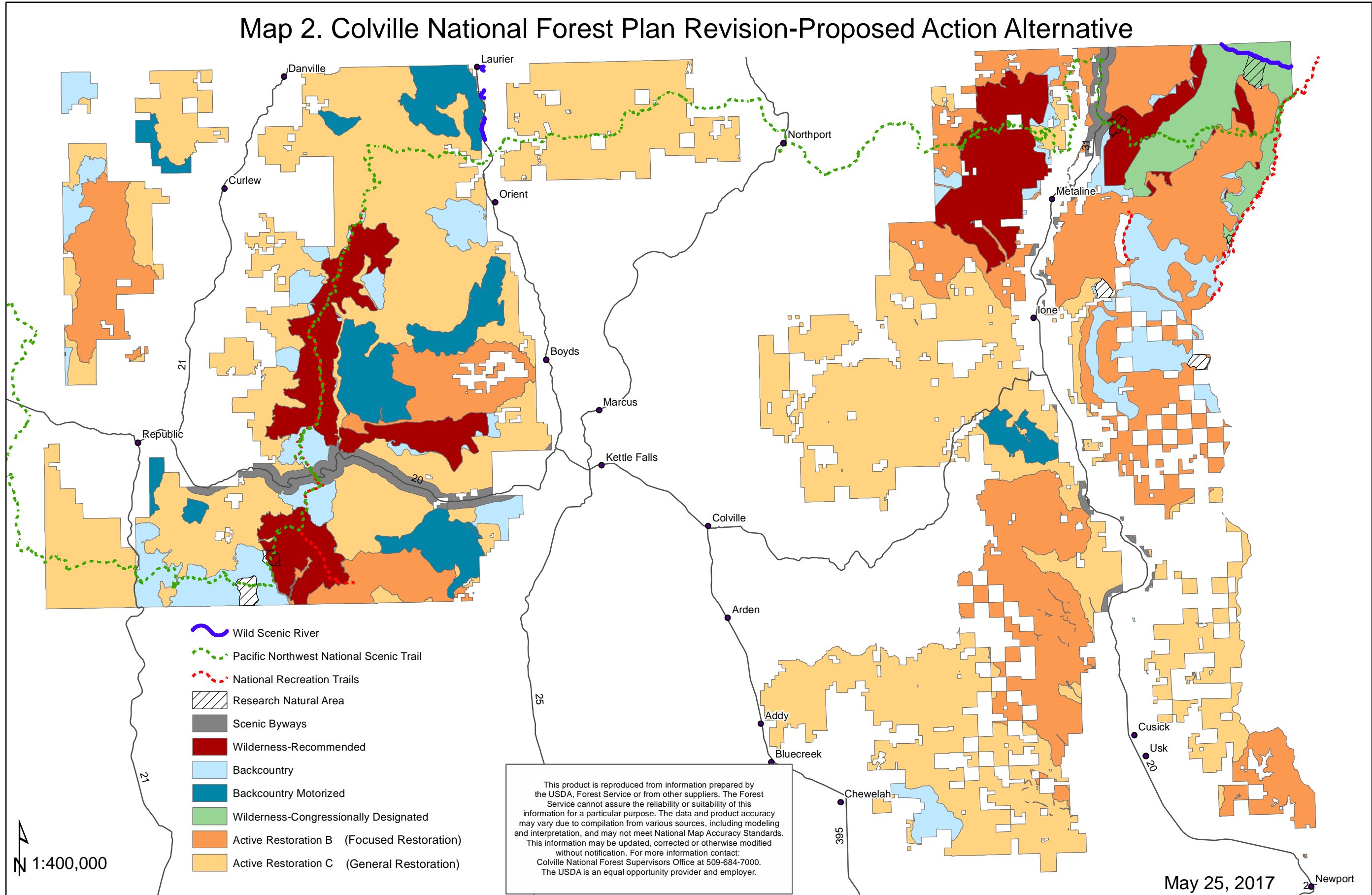






Map 1. Colville National Forest Plan Revision-No Action Alternative



Map 2. Colville National Forest Plan Revision-Proposed Action Alternative



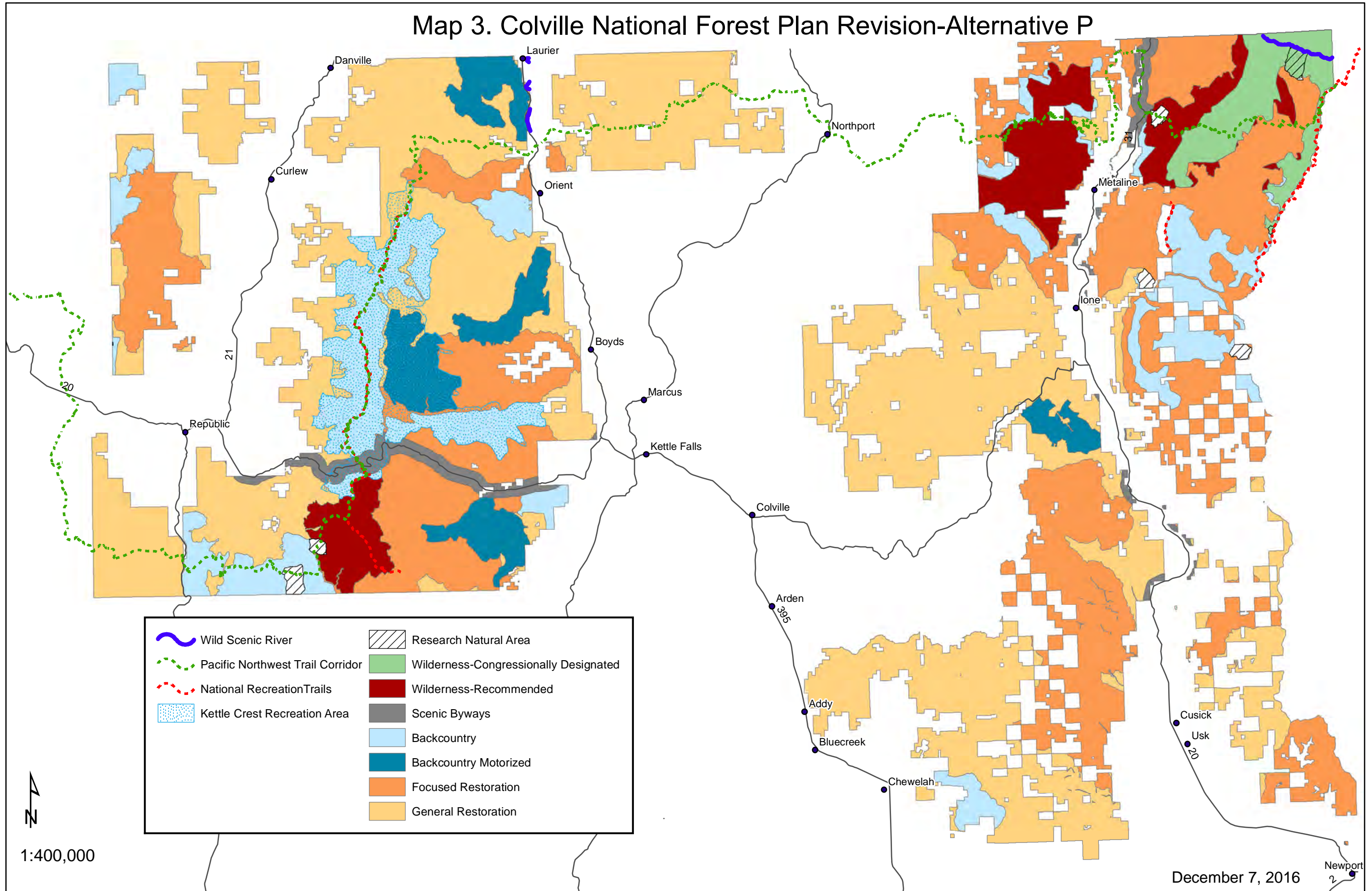
-  Wild Scenic River
-  Pacific Northwest National Scenic Trail
-  National Recreation Trails
-  Research Natural Area
-  Scenic Byways
-  Wilderness-Recommended
-  Backcountry
-  Backcountry Motorized
-  Wilderness-Congressionally Designated
-  Active Restoration B (Focused Restoration)
-  Active Restoration C (General Restoration)

This product is reproduced from information prepared by the USDA, Forest Service or from other suppliers. The Forest Service cannot assure the reliability or suitability of this information for a particular purpose. The data and product accuracy may vary due to compilation from various sources, including modeling and interpretation, and may not meet National Map Accuracy Standards. This information may be updated, corrected or otherwise modified without notification. For more information contact: Colville National Forest Supervisors Office at 509-684-7000. The USDA is an equal opportunity provider and employer.

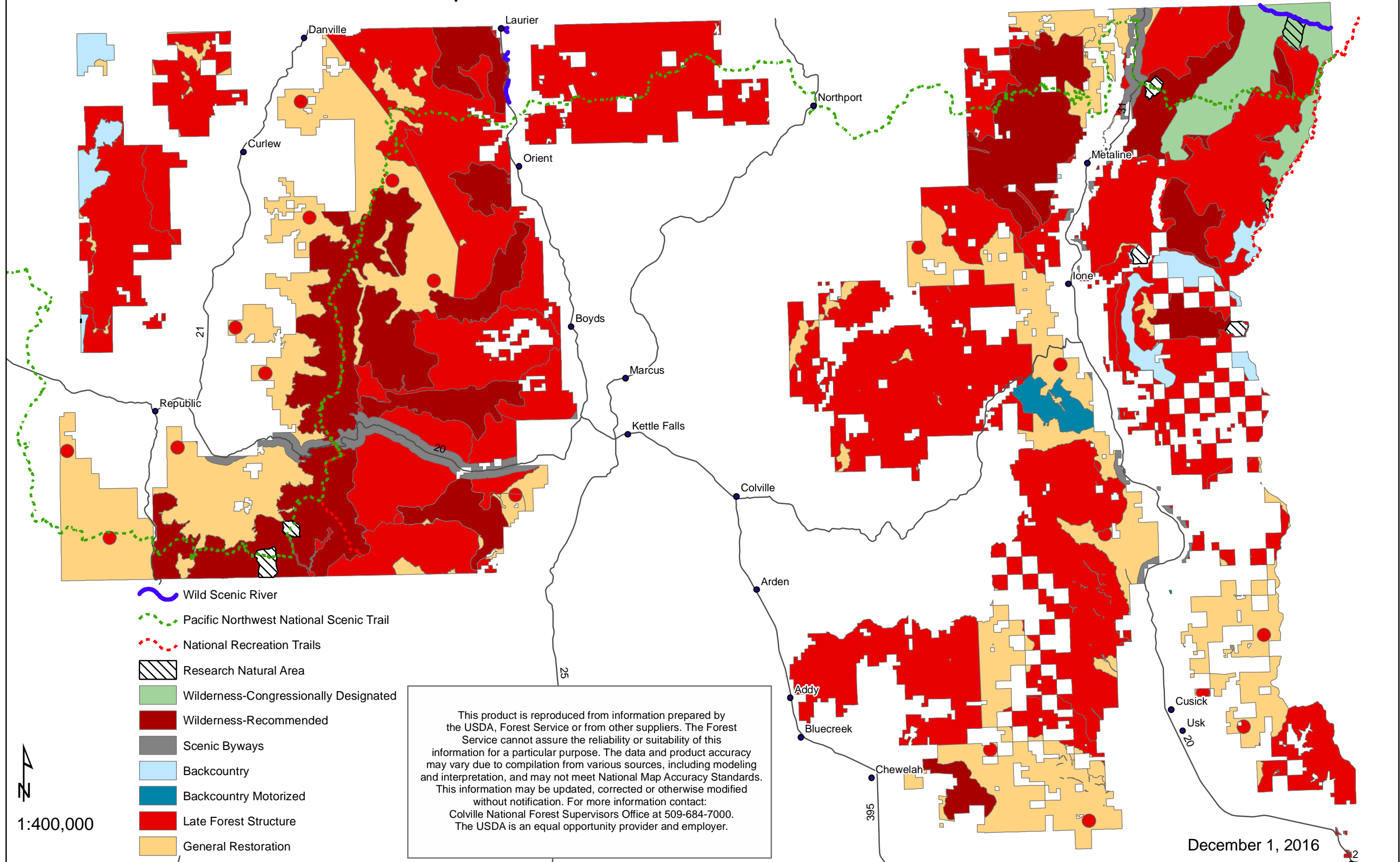
1:400,000

May 25, 2017

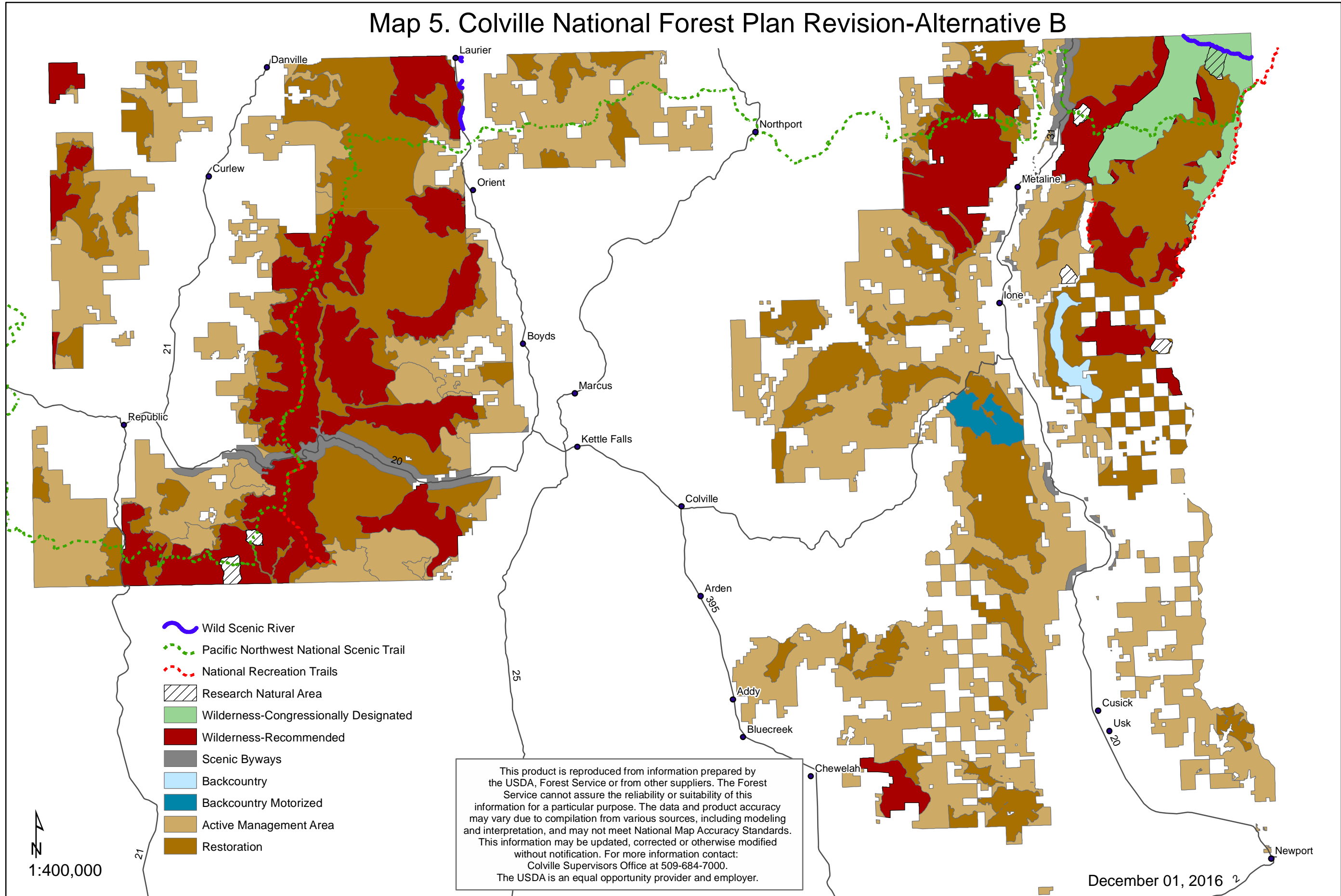
Map 3. Colville National Forest Plan Revision-Alternative P



Map 4. Colville National Forest Plan Revision-Alternative R

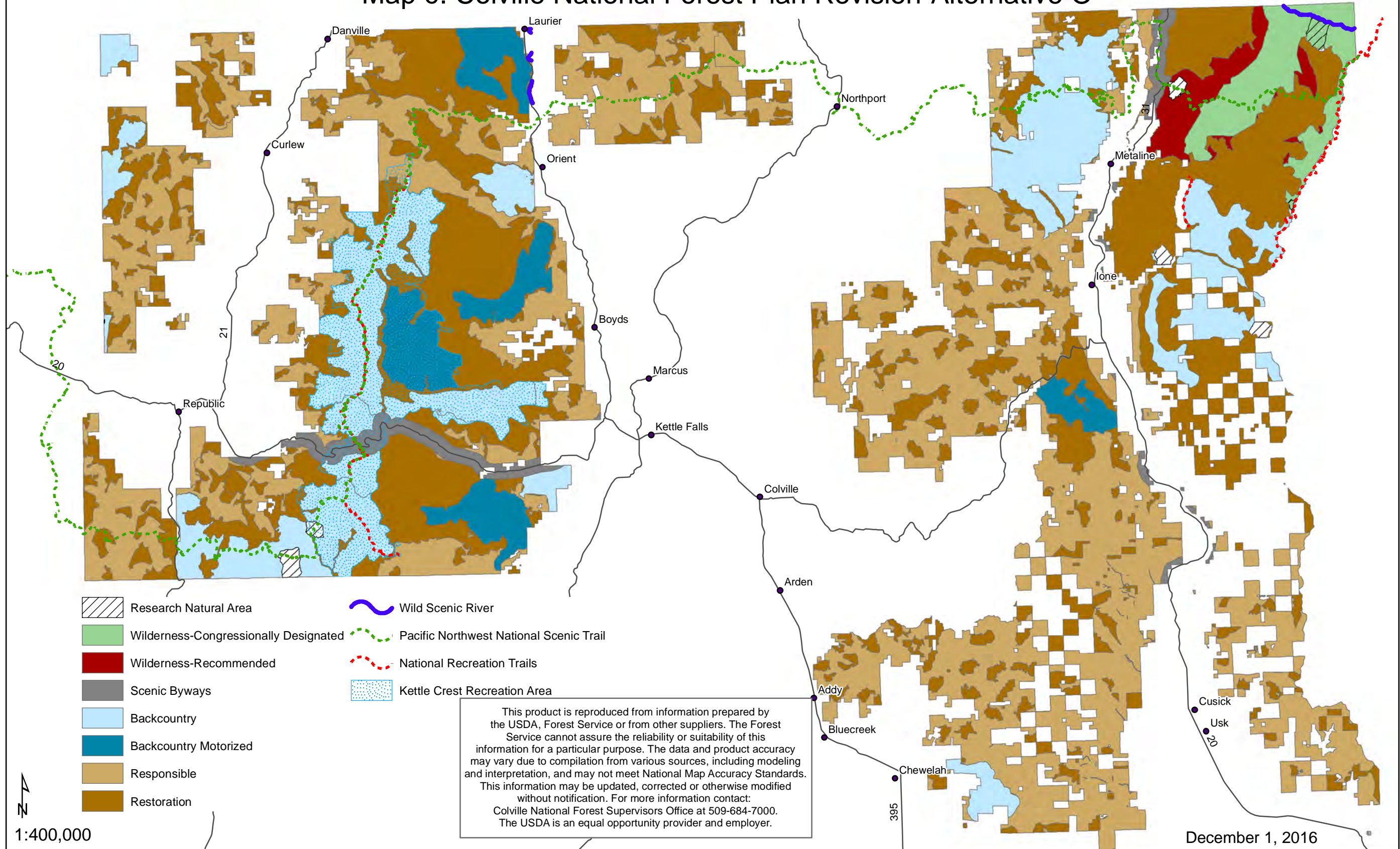


Map 5. Colville National Forest Plan Revision-Alternative B

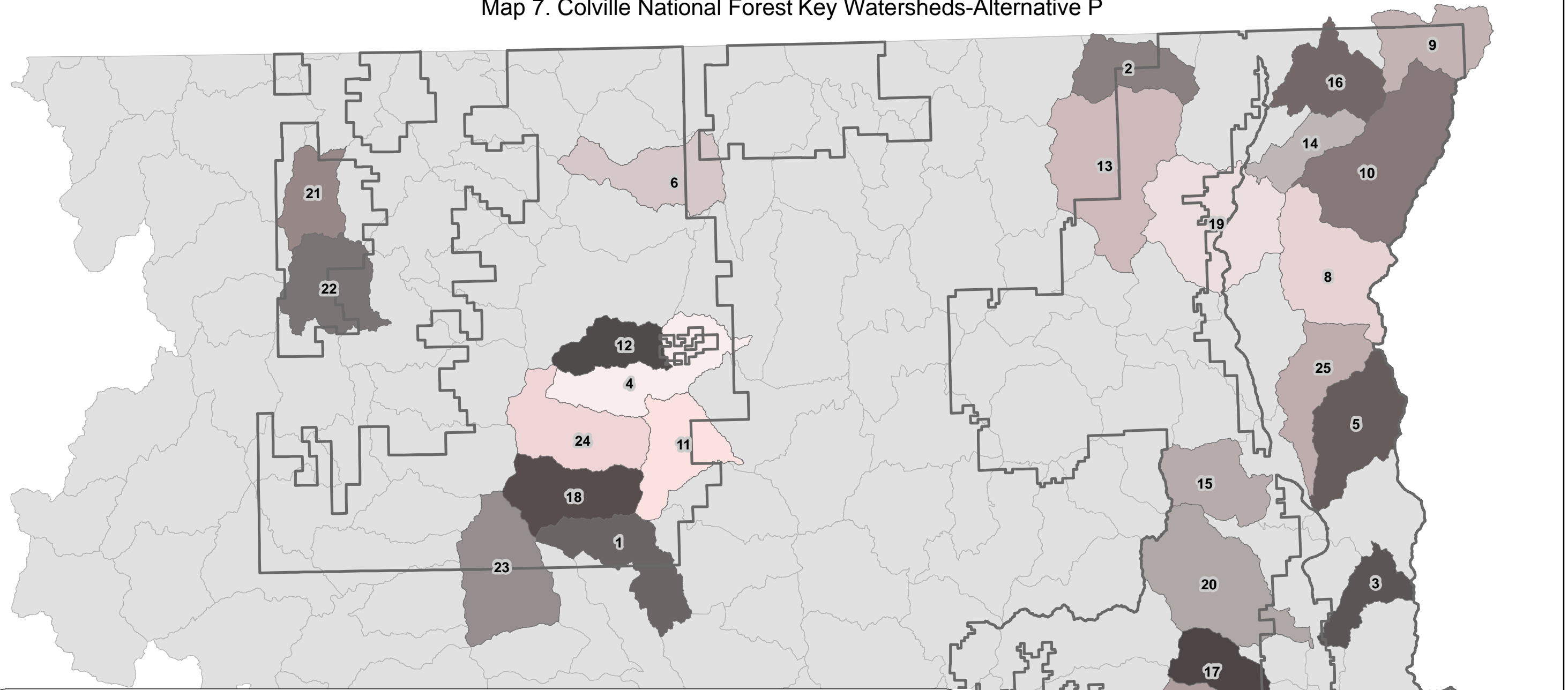


December 01, 2016

Map 6. Colville National Forest Plan Revision-Alternative O



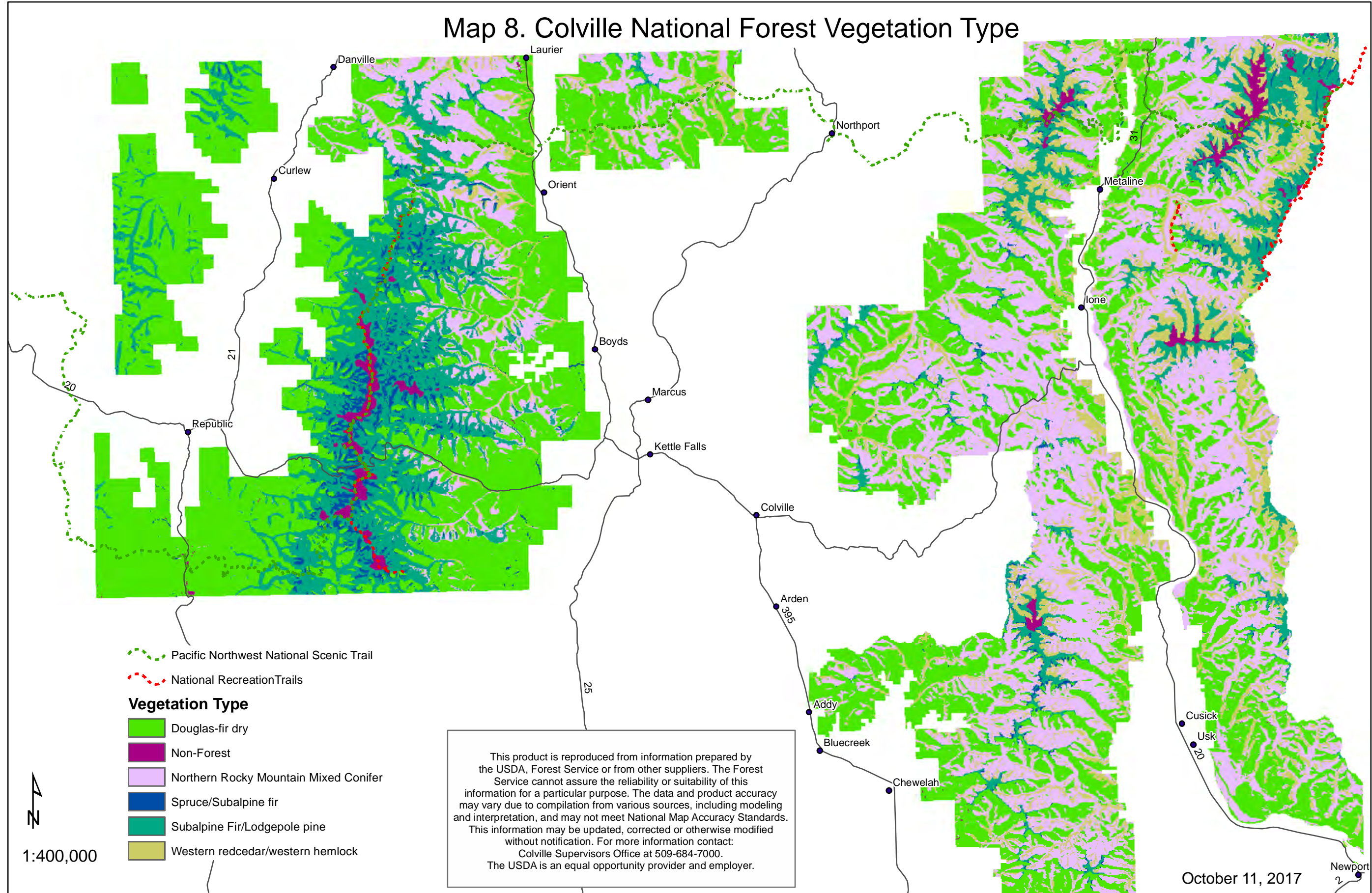
Map 7. Colville National Forest Key Watersheds-Alternative P



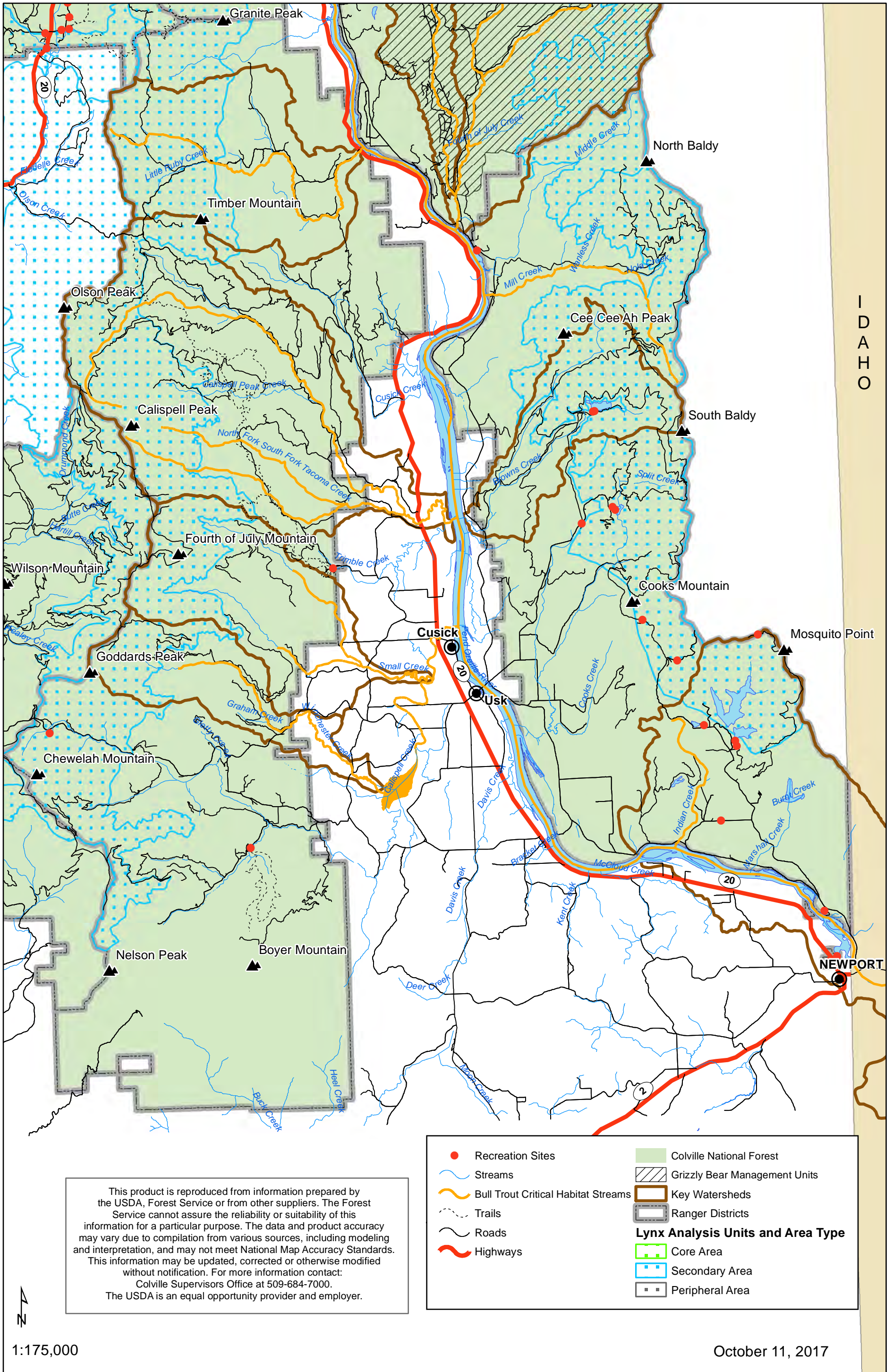
- | | | |
|--------------------------------------|--|------------------------------------|
| 1. Barnaby Creek | 10. Headwaters Sullivan Creek | 19. Sweet Creek-Pend Oreille River |
| 2. Cedar Creek | 11. Lower Sherman Creek | 20. Tacoma Creek |
| 3. Cee Cee Ah Creek | 12. North Fork Deadman Creek | 21. Tonata Creek |
| 4. Deadman Creek | 13. North Fork Deep Creek | 22. Trout Creek |
| 5. East Branch Le Clerc Creek | 14. North Fork Sullivan Creek-Sullivan Creek | 23. Upper Hall Creek |
| 6. East Deer Creek-Kettle River | 15. Ruby Creek | 24. Upper Sherman Creek |
| 7. Exposure Creek-Pend Oreille River | 16. Slate Creek | 25. West Branch Le Clerc Creek |
| 8. Harvey Creek | 17. Smalle Creek | 26. Winchester Creek |
| 9. Headwaters South Salmo River | 18. South Fork Sherman Creek | |



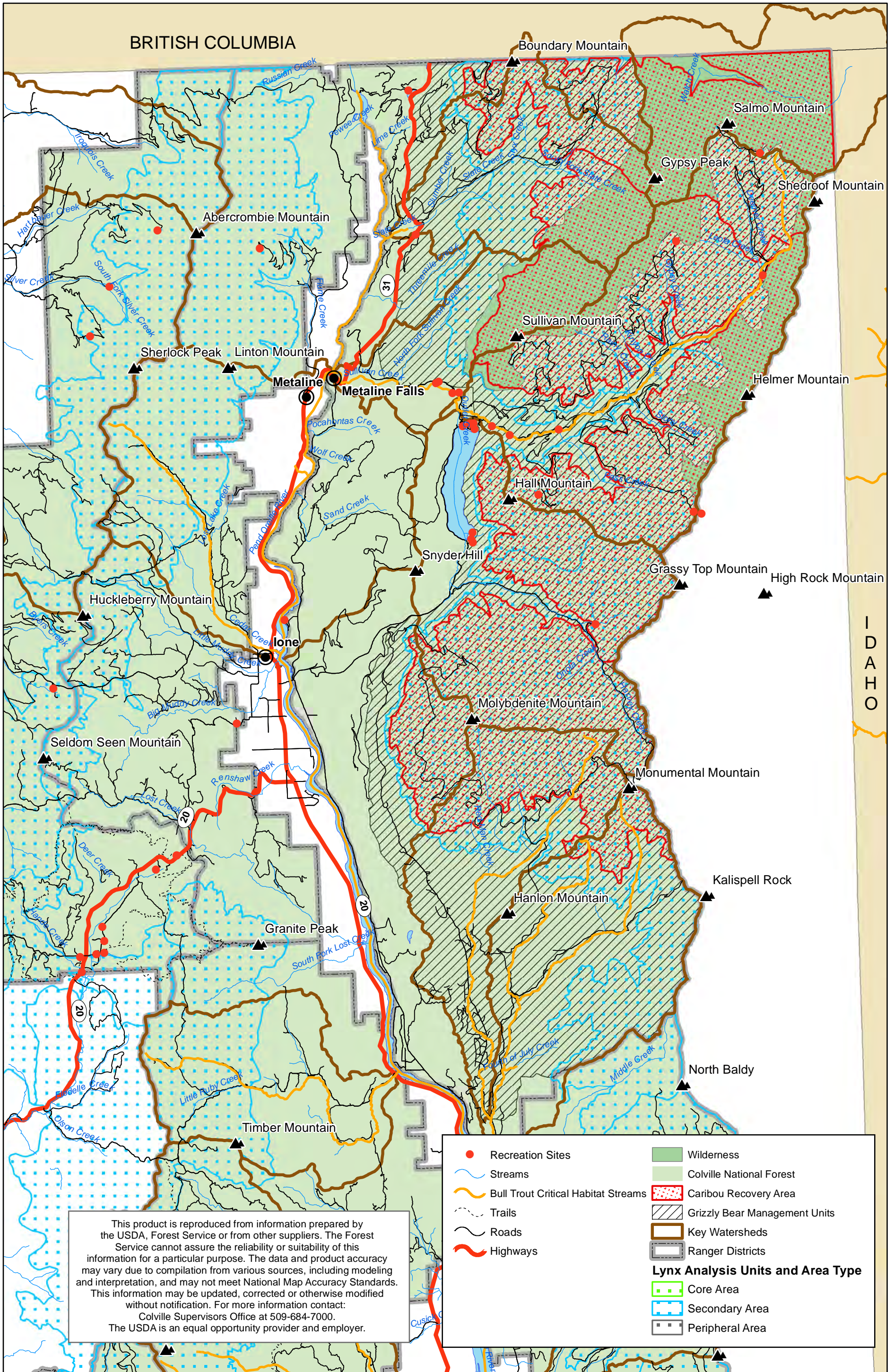
Map 8. Colville National Forest Vegetation Type



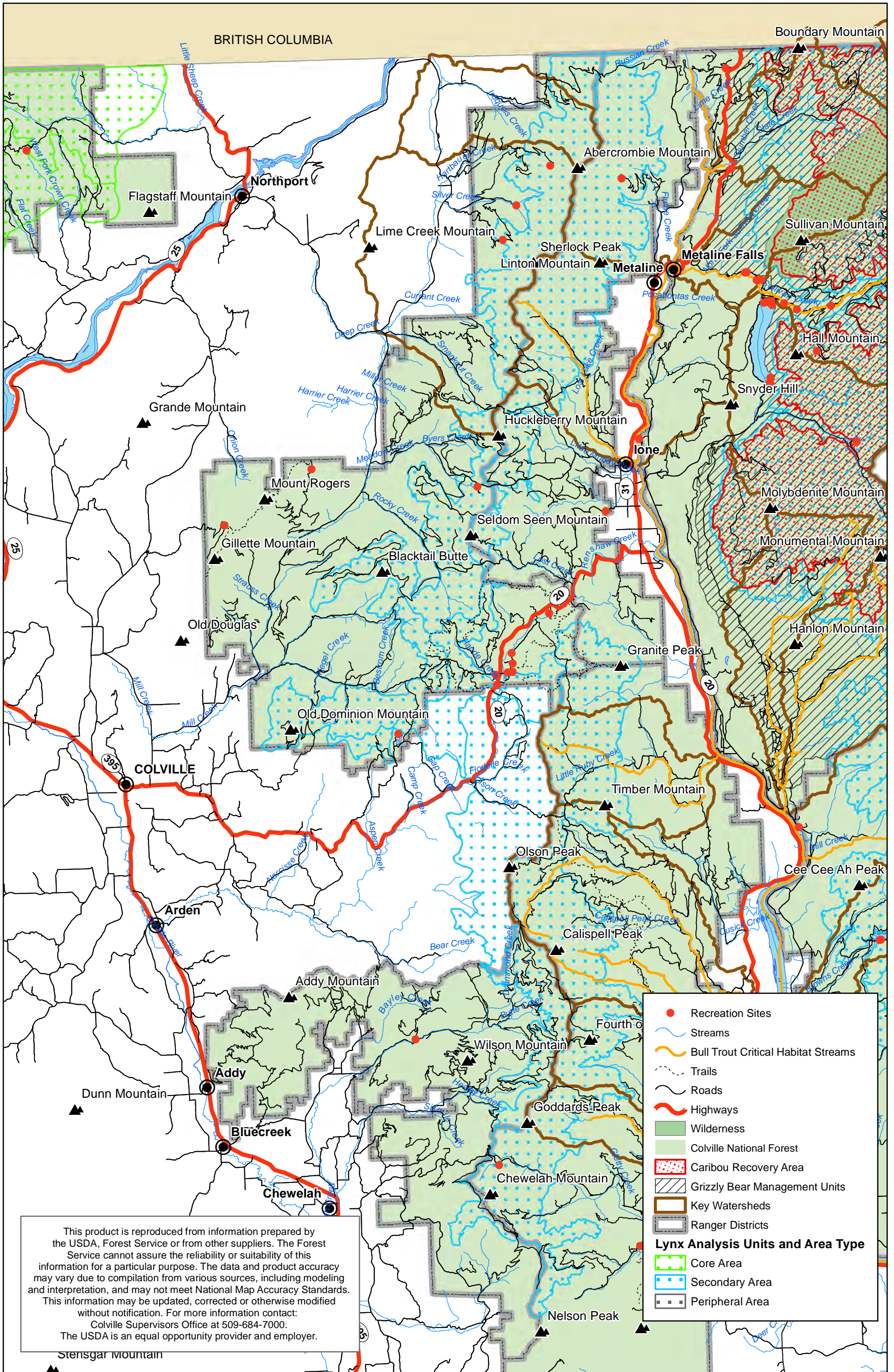
Map 9. Colville National Forest Newport Ranger District Lynx Analysis Units, Wildlife Recovery Areas, Critical Habitat and Key Watersheds



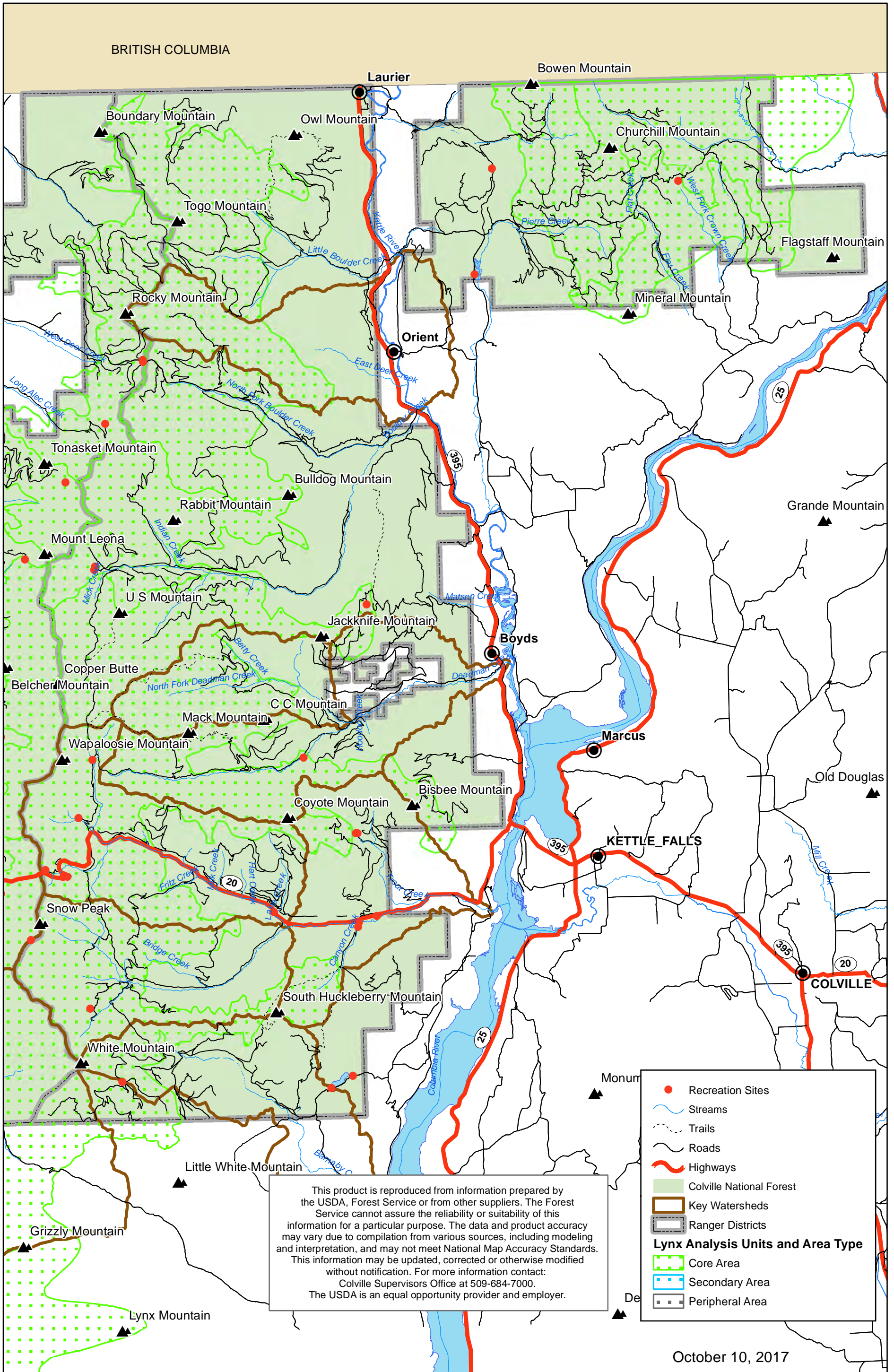
Map 10. Colville National Forest Sullivan Lake Ranger District
Lynx Analysis Units, Wildlife Recovery Areas, Critical Habitat and Key Watersheds



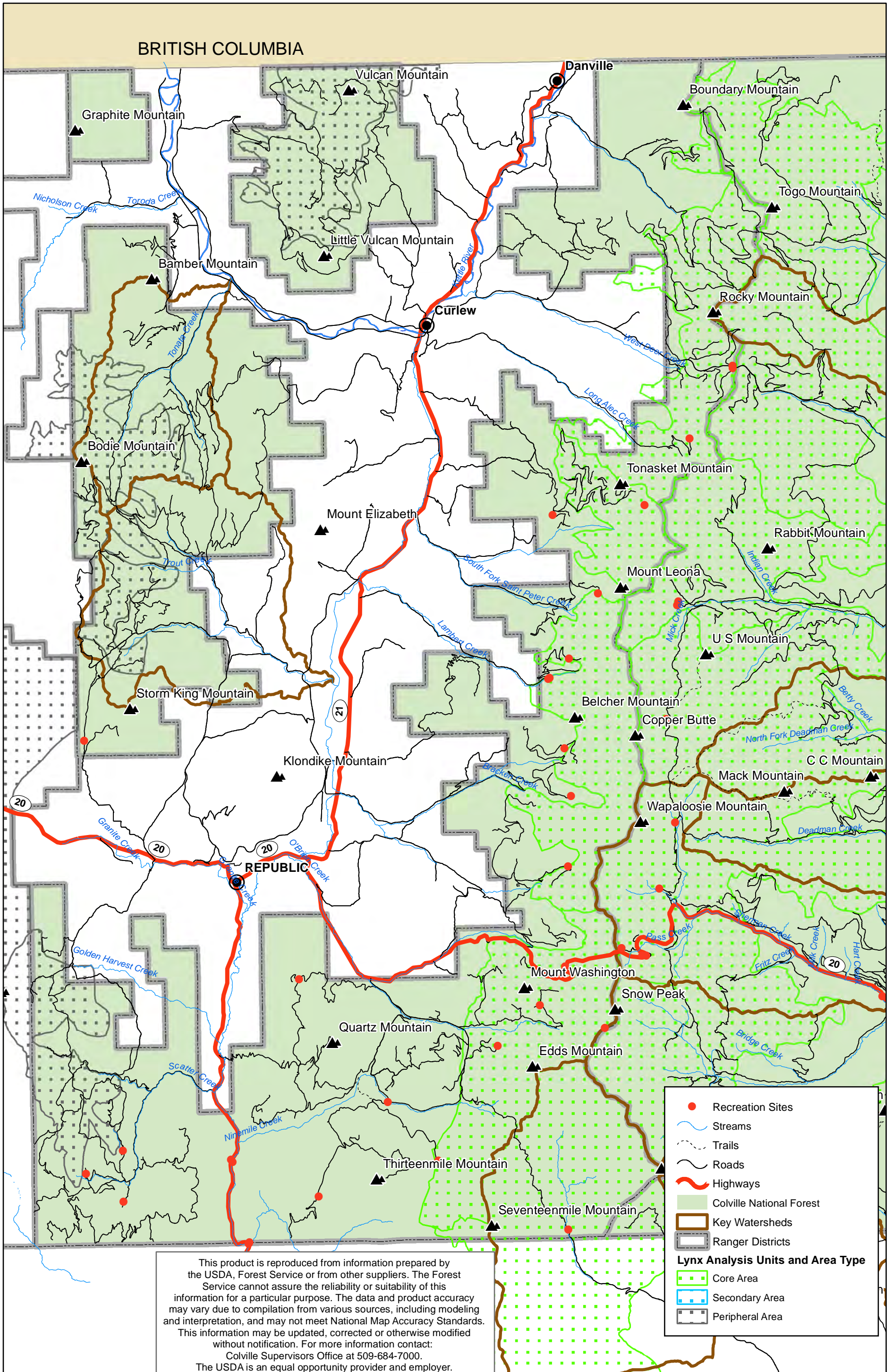
Map 11. Colville National Forest Three Rivers Ranger District (East)
Lynx Analysis Units, Wildlife Recovery Areas, Critical Habitat and Key Watersheds



Map 12. Colville National Forest Three Rivers Ranger District (West)
Lynx Analysis Units and Key Watersheds



Map 13. Colville National Forest Republic Ranger District Lynx Analysis Units and Key Watersheds



This product is reproduced from information prepared by the USDA, Forest Service or from other suppliers. The Forest Service cannot assure the reliability or suitability of this information for a particular purpose. The data and product accuracy may vary due to compilation from various sources, including modeling and interpretation, and may not meet National Map Accuracy Standards. This information may be updated, corrected or otherwise modified without notification. For more information contact: Colville Supervisors Office at 509-684-7000. The USDA is an equal opportunity provider and employer.



Map 14. Colville National Forest Deer And Elk Winter Range

