

North Fork Area
Map 2 of 4

Over Snow Vehicle Use Map 2017-2018

America's Great Outdoors



INFORMATION SOURCES
Nez Perce-Clearwater National Forests

Lolo Pass Visitor Center
208-942-3113
Lolo, MT 59847
21200 Hwy 12 West

Lochsa Ranger District
208-926-4274
Kooskia, ID 83539
502 Lowry Street

Palouse Ranger District
208-875-1131
Pottatch, ID 83855
1700 Hwy 6

North Fork Ranger District
208-476-4541
Orofino, ID 83544
12730 Hwy 12



Travel and recreate with minimum impact. Respect the environment and the rights of others.

Educate yourself plan and prepare before you go.

Allow for future use of the outdoors by leaving it better than you found it.

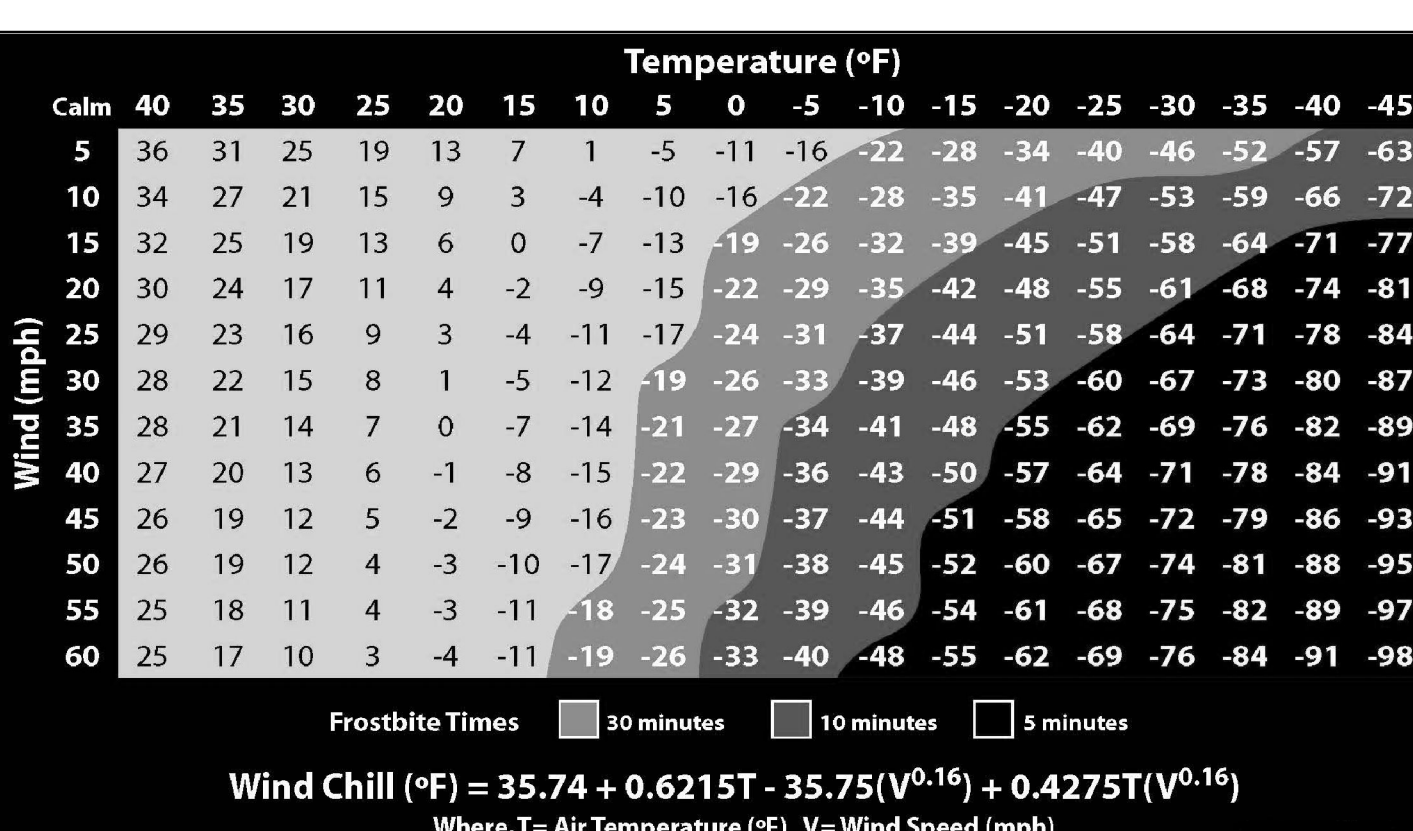
Discover the rewards of responsible recreation. For more information on Tread Lightly!, go to www.treadlightly.org or call 1-800-966-9900.

ALWAYS REMEMBER TO RESPECT PRIVATE LAND! PROTECT YOUR PRIVILEGE. STAY ON DESIGNATED ROADS AND TRAILS AND IN DESIGNATED AREAS.

The U.S. Department of Agriculture (USDA) prohibits discrimination in all its programs and activities on the basis of race, color, national origin, age, disability, and where applicable, sex, marital status, familial status, parental status, religion, sexual orientation, genetic information, political beliefs, reprisal, or because all or part of an individual's income is derived from any public assistance program. (Not all prohibited bases apply to all programs.) Persons with disabilities who require alternative means for communication of program information (Braille, large print, audiotape, etc.) should contact USDA's TARGET Center at (202) 720-2600 (voice and TDD). To file a complaint of discrimination, write to USDA, Director, Office of Civil Rights, 1400 Independence Avenue, S.W., Washington, D.C. 20250-9410, or call (800) 795-3272 (voice) or (202) 720-6382 (TDD). USDA is an equal opportunity provider and employer.

SAFETY TIPS
(1) Leave trip plans with a friend.
(2) Check weather forecast.
(3) Avoid traveling alone.
(4) Dress adequately for the conditions.
(5) Check your equipment before leaving.

Wind Chill Chart



This map shows National Forest System roads, National Forest System trails, and areas on National Forest System lands in the Lochsa-Powell Ranger District and adjacent areas where use by over-snow vehicles is allowed, restricted, or prohibited pursuant to 36 CFR 212.81.

Designation of a road, trail, or area for over-snow motor vehicle use should not be interpreted as encouraging or inviting use, or to imply that the road, trail, or area is passable, or safe for travel. Seasonal weather conditions and natural events may render designated routes and trails impassable for extended periods. Designated areas may contain dangerous or impassable terrain.

These designations apply to National Forest System roads, National Forest System trails, and areas on National Forest System lands. Idaho State Lands Designations have been included as a courtesy. Contact the District Offices for complete current information.

DEFINITION
OVER-SNOW VEHICLE - A motor vehicle that is designed for use over-snow and that runs on a track or tracks and/or a ski or skis, while in use over snow (36 CFR 212.1). Vehicles that are 50 inches wide or less which meet this definition are allowed on the groomed trail system.

PROHIBITIONS
It is prohibited to possess or operate an over-snow motor vehicle on NEZ PERCE-CLEARWATER NATIONAL FORESTS other than in accordance with these designations (36 CFR 261.14), as per the Clearwater National Forest Over Snow Vehicle Use Map.

This map does not display other facilities and attractions on the NEZ PERCE-CLEARWATER NATIONAL FORESTS. Obtain forest visitor information from the local national forest office.

Violations of 36 CFR 261.14 are subject to a fine of up to \$5,000, imprisonment for up to 6 months, or both (18 U.S.C. 3571(e)). This prohibition applies regardless of the presence or absence of signs.

Designated roads, trails and areas may also be subject to temporary, emergency closures, and visitors must comply with signs notifying you of such restrictions. A national forest may issue an order to close a road, trail or area on a temporary basis to protect the life, health, or safety of forest visitors or the natural or cultural resources in these areas. Such a temporary and/or emergency closure is consistent with the Travel Management Rule (36 CFR 212.52 (b), 36 CFR 261 subpart B).

IT IS UNLAWFUL TO SNOWMOBILE ON PLOWED ROADS OR ANY ROAD DRIVEABLE BY CONVENTIONAL MOTORIZED VEHICLES, REGARDLESS OF THE TRAVEL DESIGNATION DISPLAYED ON THIS MAP.

OPERATOR RESPONSIBILITIES
Operating a motor vehicle on National Forest System roads, National Forest System trails, and in areas on National Forest System lands carries a greater responsibility than operating that vehicle in a city or other developed setting. Not only must the vehicle operators know and follow all applicable traffic laws, you need to show concern for the environment as well as other forest users. The misuse of motor vehicles can lead to the temporary or permanent closure of any designated road, trail, or area. As a motor vehicle operator, you are also subject to State traffic law, including State requirements for licensing, registration, and operation of the vehicle in question.

Motor vehicle use, especially over-snow motor vehicle use, involves inherent risks that may cause property damage, serious injury, and possibly death to participants. Riders should drive cautiously and anticipate rough surfaces and features, such as snow, mud, vegetation, and water crossings common to remote conditions. Participants voluntarily assume full responsibility for these damages, risks, and dangers. Motor vehicle operators should take care at all times to protect themselves and those under their responsibility.

Much of the NEZ PERCE-CLEARWATER NATIONAL FORESTS is remote and medical assistance may not be readily available. Cellular telephones do not work in many areas of the NEZ PERCE-CLEARWATER NATIONAL FORESTS. Operators should take adequate food, water, first-aid supplies, and other equipment appropriate for the conditions and expected weather.

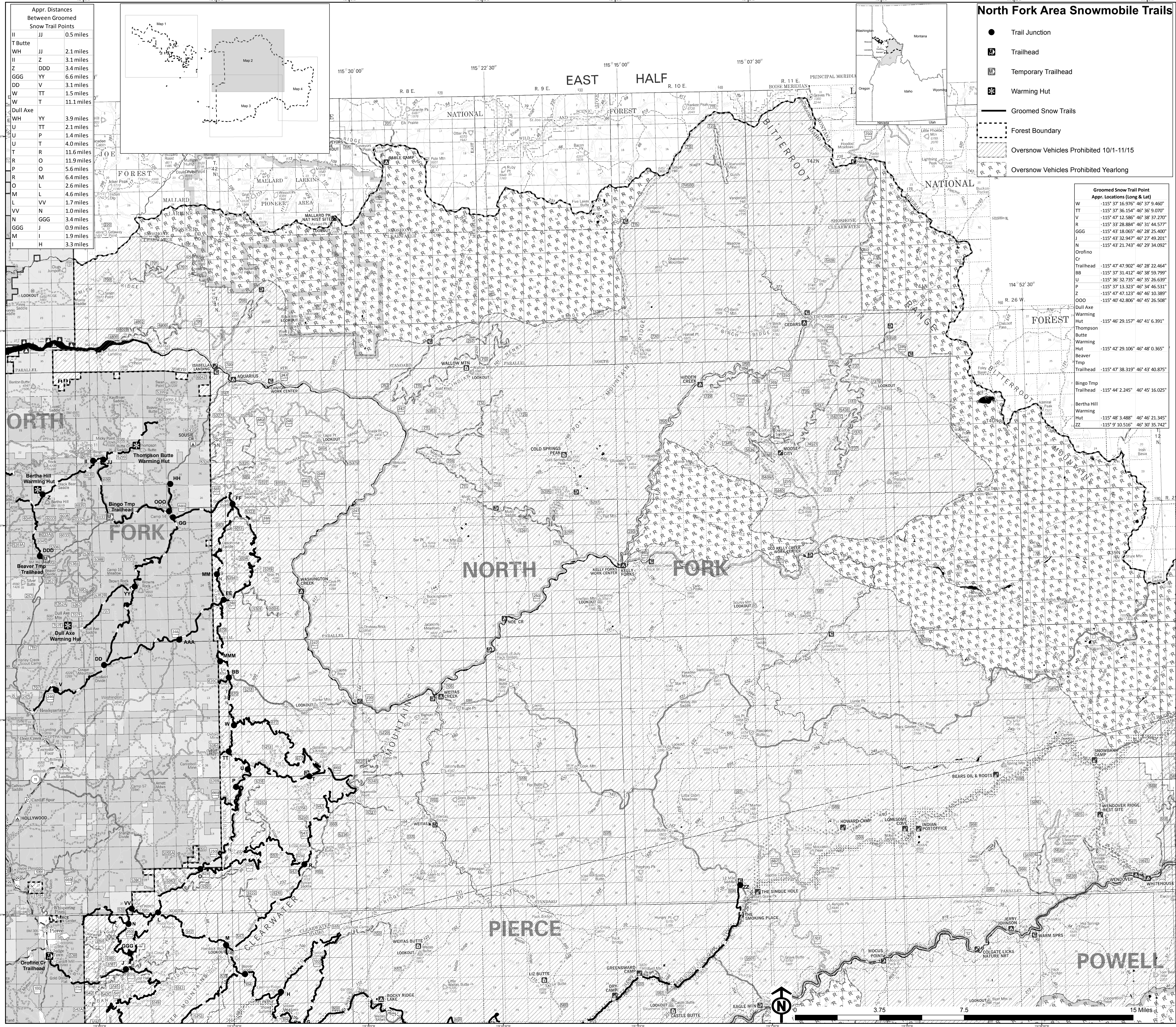
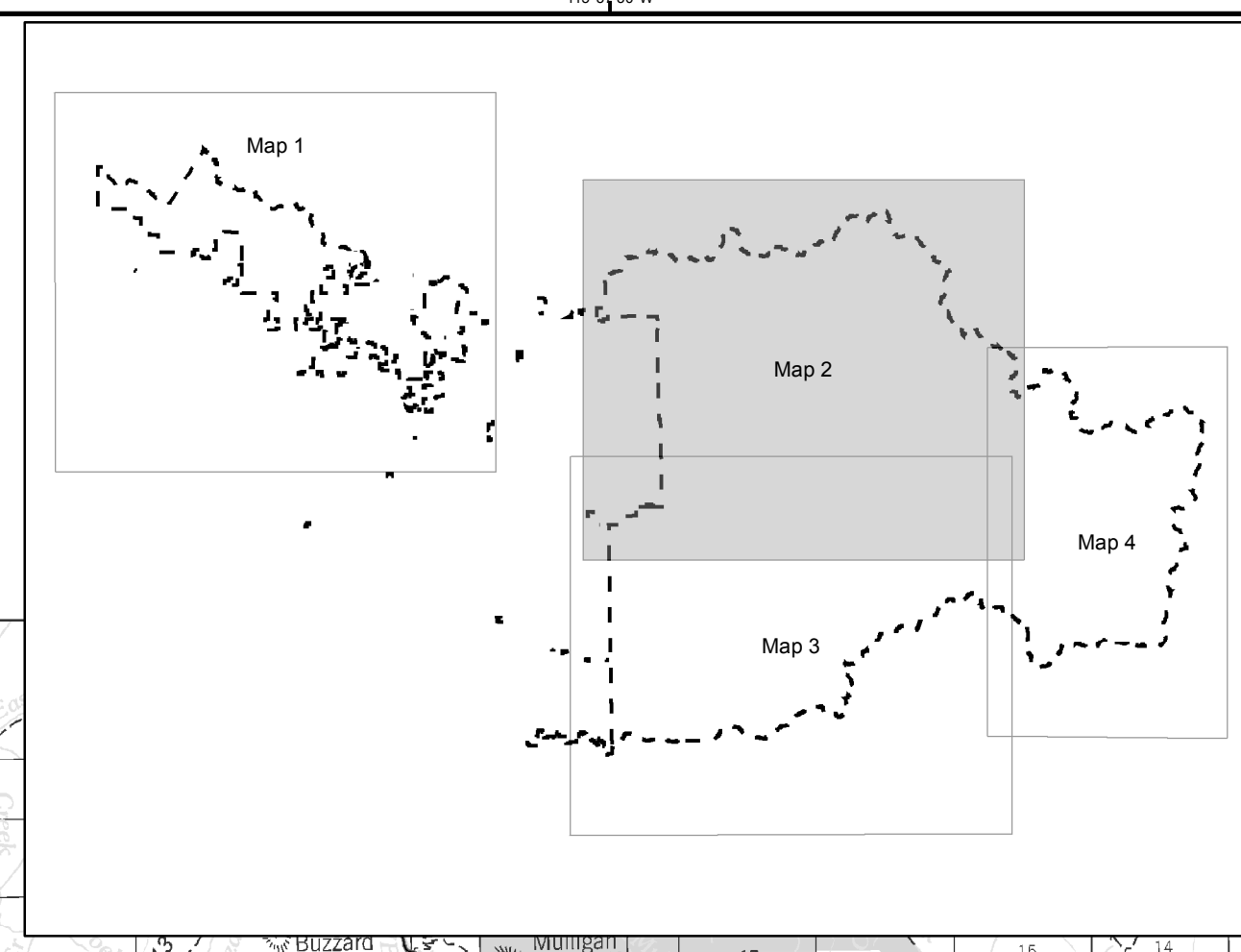
As a motor vehicle operator on a National Forest System road, trail, or area you must comply with this map, as well as all Federal, State, and local laws and regulations. Compliance with these rules is your responsibility.

A recreation use license is required on State Lands. A state permit is required for out of state over-snow vehicles. They may be purchased at local State Lands offices, the Idaho Department of Fish & Game, and various vendors.

Idaho snowmobile owners are legally obligated to register their snowmobiles. Snowmobile owners must register their snowmobiles on or before November 1 of each year.

Appr. Distances Between Groomed Snow Trail Points

II	JJ	0.5 miles
T Butte	WH	2.1 miles
II	Z	3.1 miles
Z	DDD	3.4 miles
GGG	YY	6.6 miles
DD	V	3.1 miles
W	TT	1.5 miles
W	T	11.1 miles
Dull Axe	WH	3.9 miles
U	TT	2.1 miles
U	P	1.4 miles
U	T	4.0 miles
T	R	11.6 miles
R	O	11.9 miles
P	O	5.6 miles
R	M	6.4 miles
O	L	2.6 miles
M	LV	4.6 miles
L	VV	1.7 miles
VV	N	1.0 miles
N	GGG	3.4 miles
GGG	J	0.9 miles
M	I	1.9 miles
I	H	3.3 miles



North Fork Area Snowmobile Trails

- Trail Junction
- Trailhead
- Temporary Trailhead
- Warming Hut
- Groomed Snow Trails
- Forest Boundary
- Oversnow Vehicles Prohibited 10/1-11/15
- Oversnow Vehicles Prohibited Yearlong

Groomed Snow Trail Point Appr. Locations (Long & Lat)

W	-115° 37' 16.970"	46° 37' 9.460"
TT	-115° 37' 36.154"	46° 36' 9.070"
W	-115° 47' 12.586"	46° 38' 37.270"
R	-115° 33' 28.884"	46° 31' 44.577"
GGG	-115° 43' 18.065"	46° 28' 25.400"
J	-115° 43' 32.947"	46° 27' 49.201"
N	-115° 43' 21.743"	46° 29' 34.092"
Orofino		
C		
Trailhead	-115° 47' 47.902"	46° 28' 22.464"
BB	-115° 37' 31.412"	46° 38' 59.799"
U	-115° 36' 32.735"	46° 35' 26.639"
P	-115° 37' 13.323"	46° 34' 46.531"
Z	-115° 47' 47.123"	46° 46' 10.389"
O	-115° 40' 42.806"	46° 45' 26.508"
Dull Axe		
Warming Hut	-115° 46' 29.157"	46° 41' 6.391"
Thompson Butte		
Warming Hut	-115° 42' 29.106"	46° 48' 0.365"
Beaver Tmp		
Trailhead	-115° 47' 38.319"	46° 43' 40.875"
Bingo Tmp		
Trailhead	-115° 44' 2.245"	46° 45' 16.025"
Bertha Hill		
Warming Hut	-115° 48' 3.488"	46° 46' 21.345"
ZZ	-115° 9' 10.516"	46° 30' 35.742"