



Tuxachanie Hiking Trail

De Soto Ranger District



Ranger District Office
654 Frontage Drive West
Wiggins, MS 39577
601-528-6160



Location
26170 Highway 49
Saucier, MS 39574



Open Dates/Hours
Open year round unless weather conditions require closures.



Campsites
Primitive camping is available



Water
Water is available if using filter



Restrooms
Restrooms are not available



Trash Pick-up
Pack out all trash



Fees
Day Use – Free

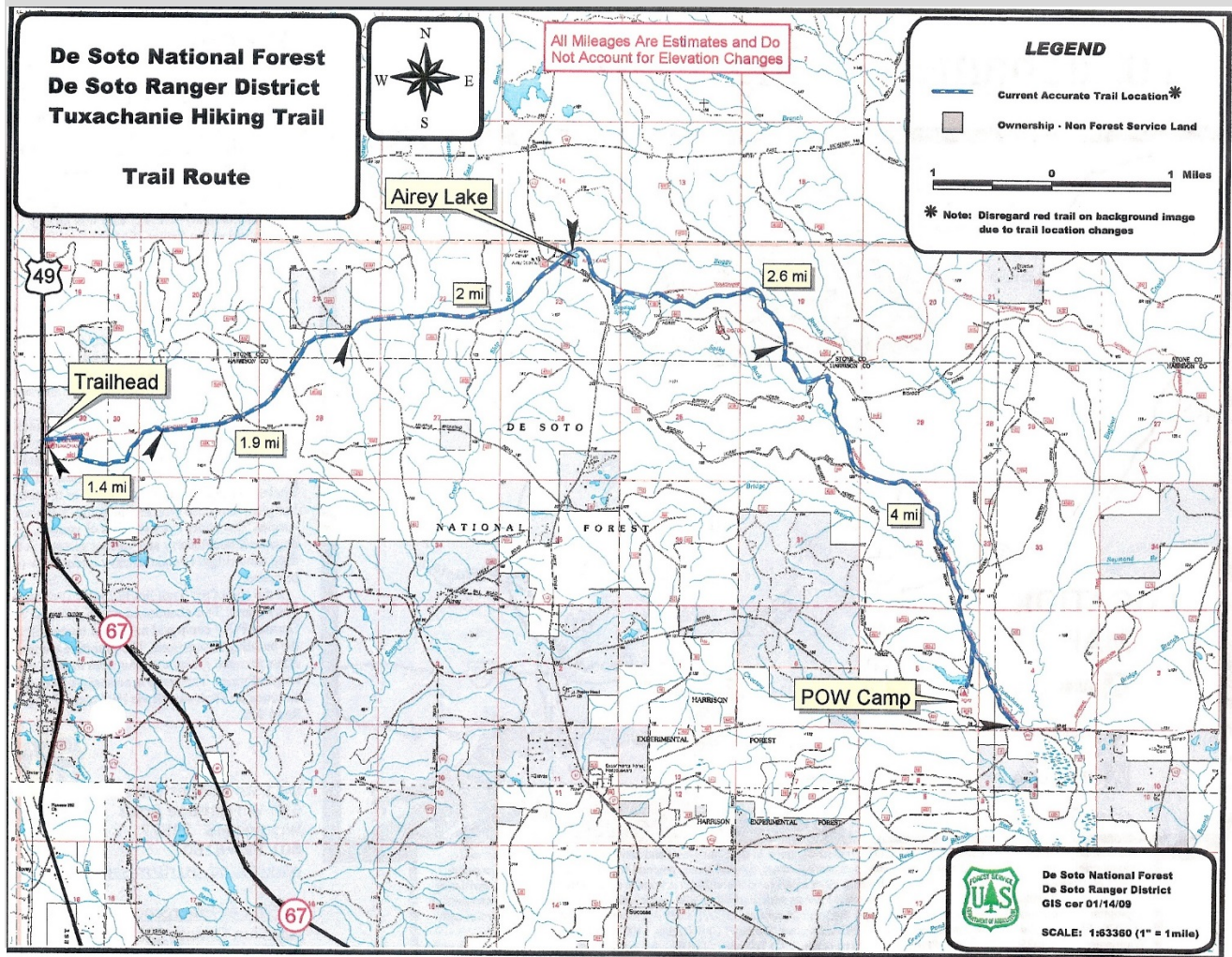
Discover the hidden beauty of the piney woods in the Gulf Coastal Plain by hiking one of Mississippi's most scenic trails. The Tuxachanie Trail is 11.9 miles in length with the first five miles following a turn of the 20th century narrow gauge railroad. Remains of the railroad trestles and part of the logging camp near the trailhead can still be seen. Hikers can access the trail from Airey Lake and P.O.W. Lake.

Trails nearby:

Closest Town: Saucier **Latitude:** 30° 40' 05.490
County: Harrison & Stone **Longitude:** 89° 07' 45.420



Tuxachanie Hiking Trail



www.fs.usda.gov/recremain/mississippi/recreation

USDA is an equal opportunity provider, employer and lender.



You are responsible for your own safety. All outdoor activities have inherent risks and you may encounter a variety of unexpected and/or dangerous conditions. It is your responsibility to be informed and take precautions. Learn more at www.fs.usda.gov/r8.