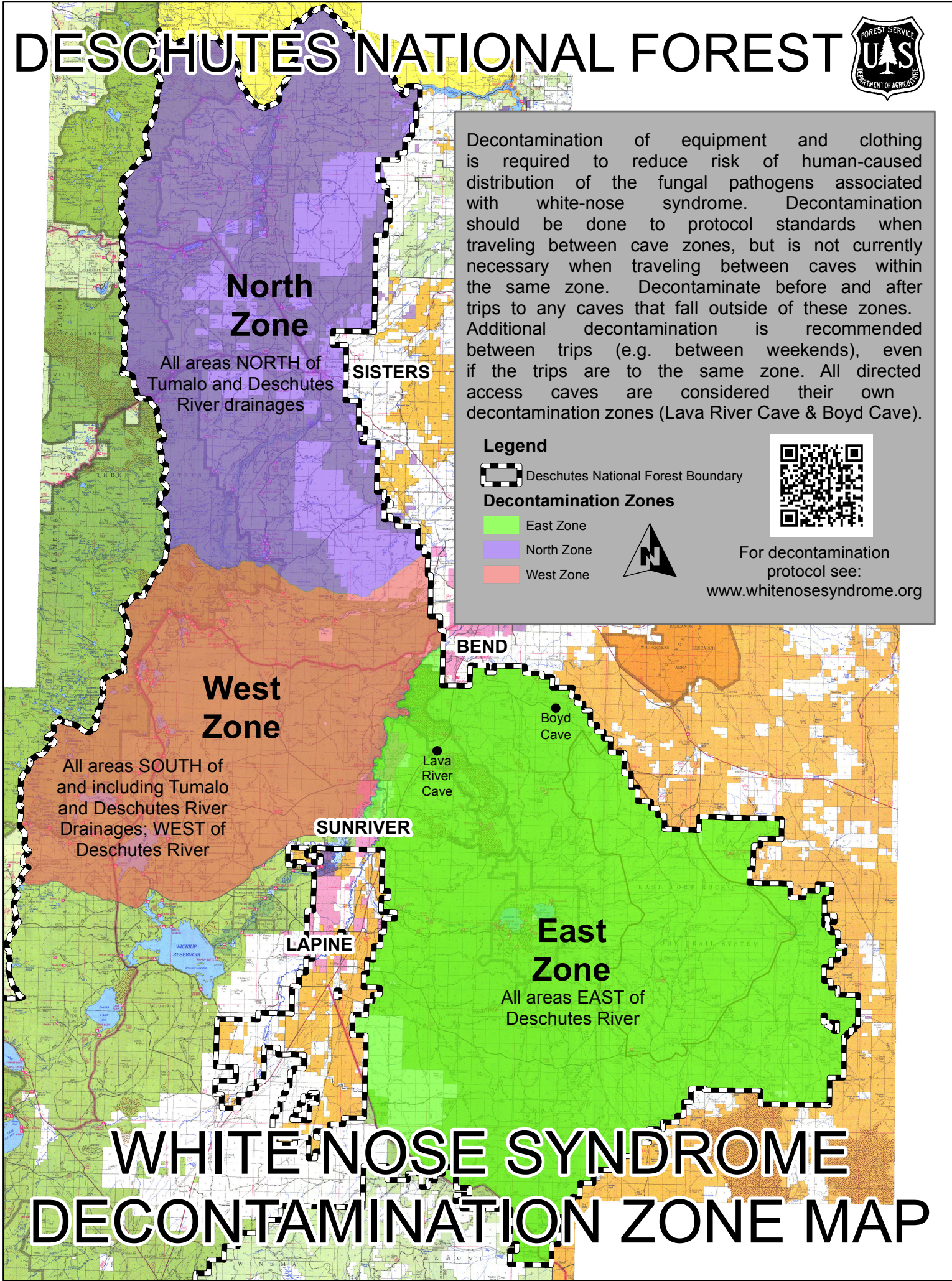


DESCHUTES NATIONAL FOREST



Decontamination of equipment and clothing is required to reduce risk of human-caused distribution of the fungal pathogens associated with white-nose syndrome. Decontamination should be done to protocol standards when traveling between cave zones, but is not currently necessary when traveling between caves within the same zone. Decontaminate before and after trips to any caves that fall outside of these zones. Additional decontamination is recommended between trips (e.g. between weekends), even if the trips are to the same zone. All directed access caves are considered their own decontamination zones (Lava River Cave & Boyd Cave).

Legend

Deschutes National Forest Boundary

Decontamination Zones

- East Zone
- North Zone
- West Zone



For decontamination protocol see:
www.whitenosesyndrome.org

North Zone

All areas NORTH of Tumalo and Deschutes River drainages

SISTERS

West Zone

All areas SOUTH of and including Tumalo and Deschutes River Drainages; WEST of Deschutes River

BEND

Boyd Cave

Lava River Cave

SUNRIVER

LAPINE

East Zone

All areas EAST of Deschutes River

WHITE NOSE SYNDROME DECONTAMINATION ZONE MAP