

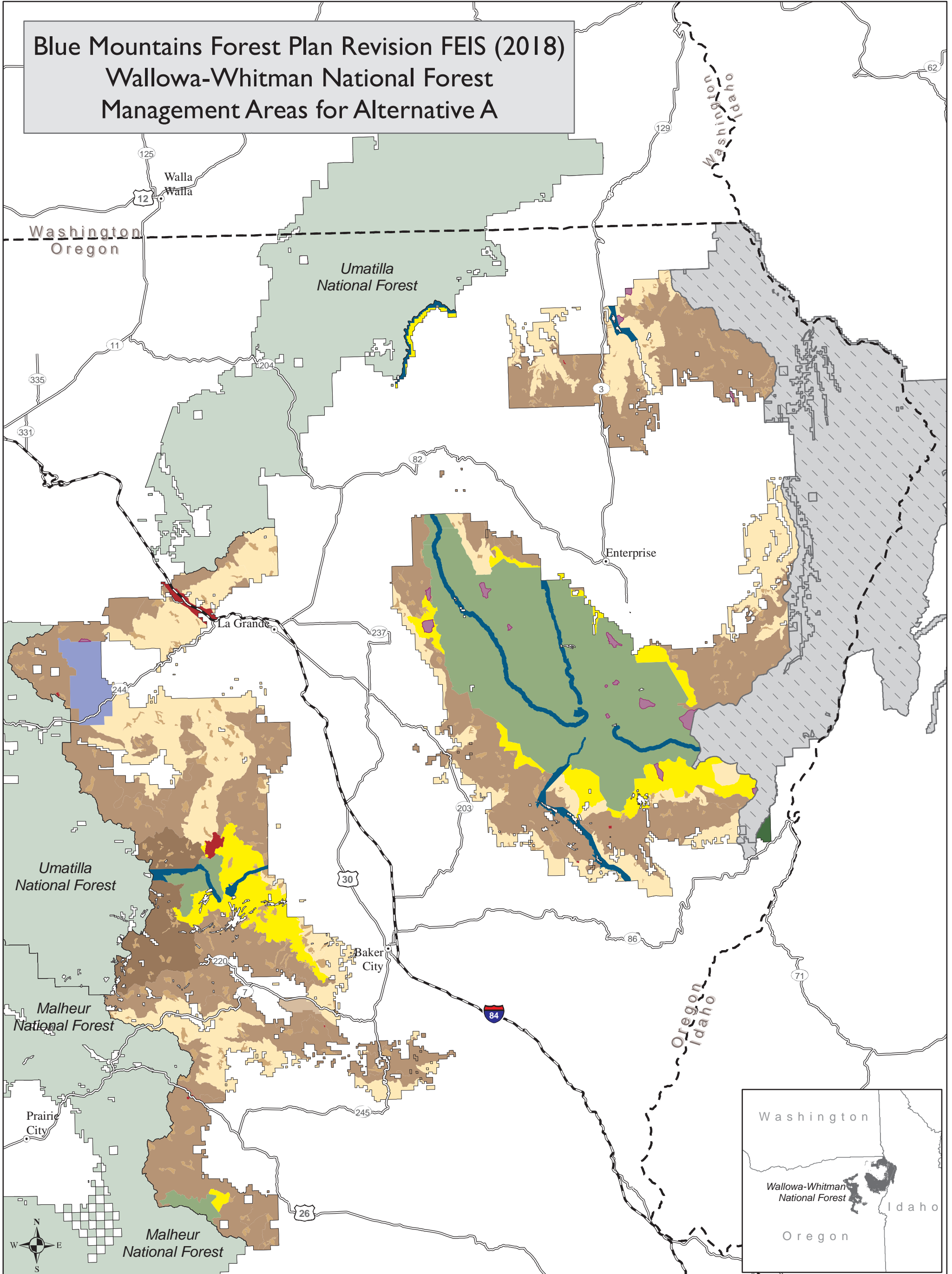
Appendix G: Maps

Wallowa-Whitman National Forest

The following maps are displayed in an 11-inch by 17-inch format.

- Management Areas for Alternative A
- Management Areas for Alternative B
- Management Areas for Alternative C
- Management Areas for Alternative D
- Management Areas for Alternatives E and F
- Management Areas for Alternatives E-Modified and E-Modified Departure

Blue Mountains Forest Plan Revision FEIS (2018) Wallowa-Whitman National Forest Management Areas for Alternative A



Legend

- | | | |
|---|---|--|
| IA Designated Wilderness Area | 4A General Forest | National Forest Administrative Boundary |
| IC Wilderness Study Area | 4C Old Forest | Hells Canyon National Recreation Area |
| 2A Designated Wild & Scenic River | 4D Big Game Winter/Summer Range | |
| 2B Research Natural Area | 4E Wildlife/Fish Emphasis | |
| 2I Starkey Experimental Forest and Range | 4F Visuals | |
| 3B Backcountry (motorized use) | 5 Developed Site & Administrative Area | |

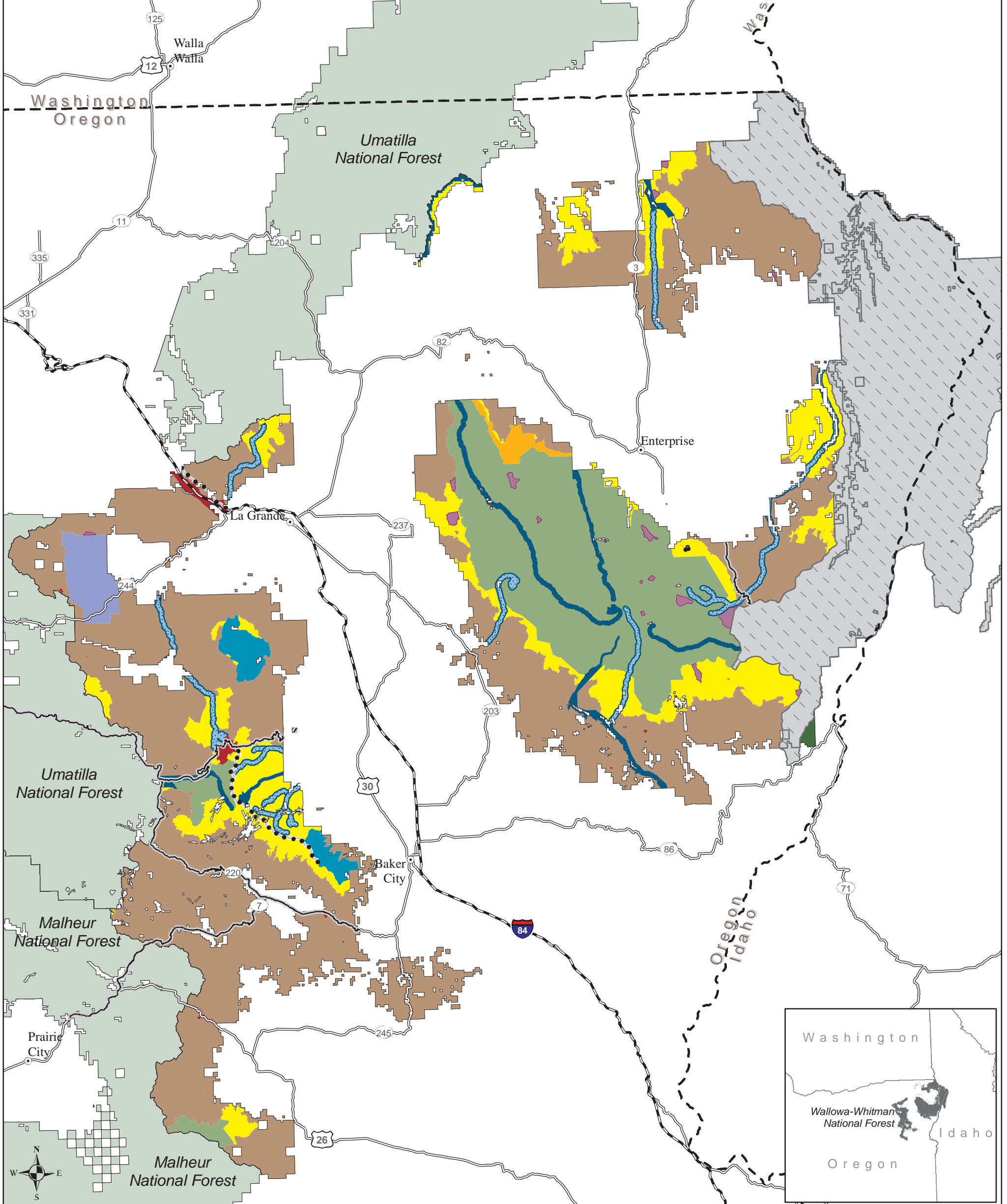
This product is produced from information prepared by the USDA, Forest Service, or from other suppliers. The Forest Service cannot assure the reliability or suitability of this information for a particular purpose. The data and product accuracy may vary due to compilation from various sources, including modeling and interpretation, and may not meet National Map Accuracy Standards. This information may be updated, corrected, or otherwise modified without notification.

For more information please contact:
Wallowa-Whitman National Forest at 541-523-6391
The USDA is an equal opportunity provider and employer.



Blue Mountains Forest Plan Revision FEIS (2018)

Wallowa-Whitman National Forest Management Areas for Alternative B

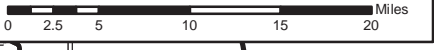


- Legend**
- IA Designated Wilderness Area
 - Preliminary Administratively Recommended IB Wilderness Area
 - IC Wilderness Study Area
 - 2A Designated Wild & Scenic River
 - 2A Eligible Wild & Scenic River
 - 2B Research Natural Area
 - 2I Starkey Experimental Forest and Range
 - 2J Municipal Watershed
 - 3B Backcountry (motorized use)
 - 4A General Forest
 - 5 Developed Site & Administrative Area
 - National Forest Administrative Boundary
 - Hells Canyon National Recreation Area
 - 2F Scenic Byway & All-American Road
 - 2G Nationally Designated Trail

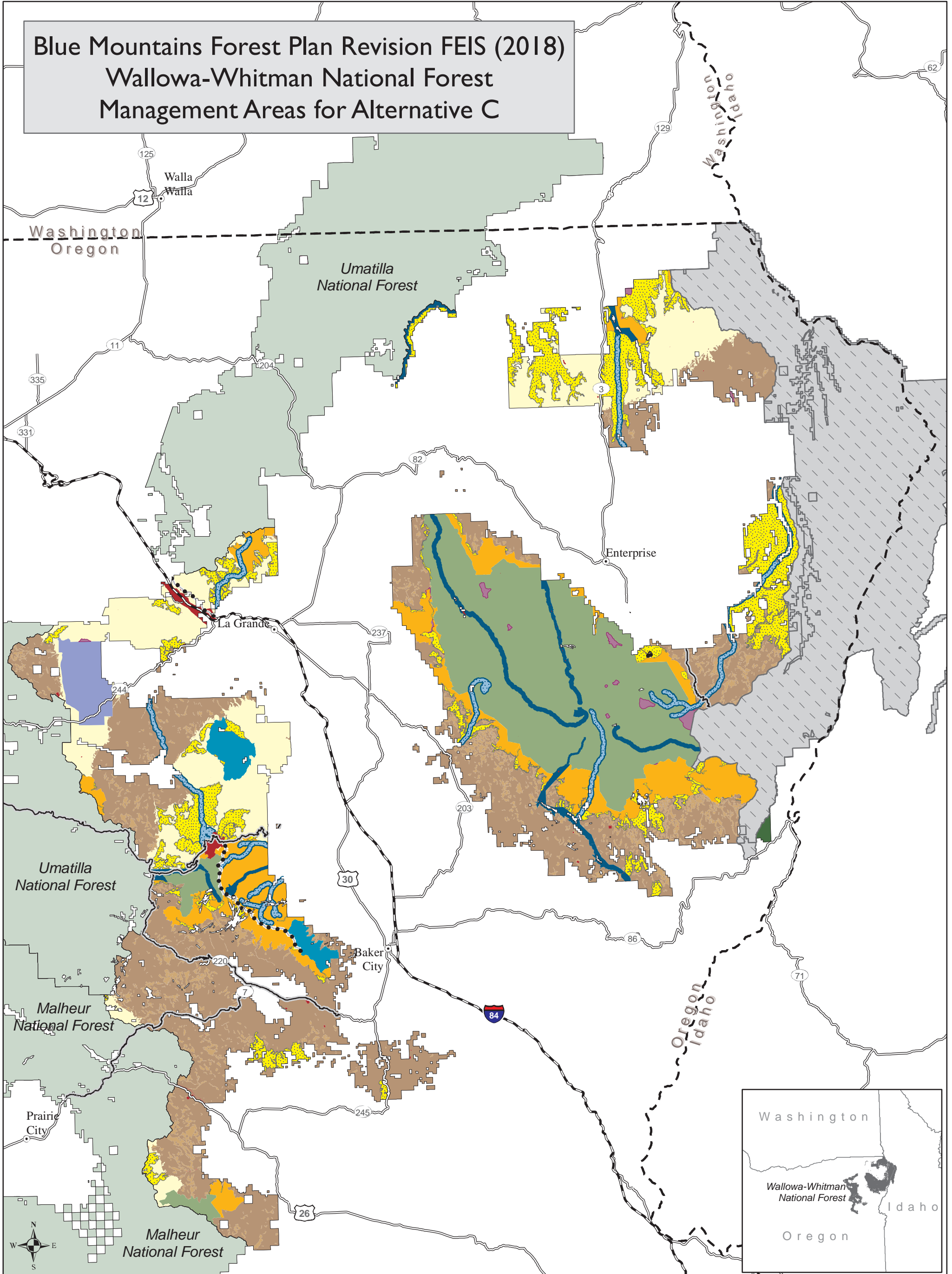


This product is produced from information prepared by the USDA, Forest Service, or from other suppliers. The Forest Service cannot assure the reliability or suitability of this information for a particular purpose. The data and product accuracy may vary due to compilation from various sources, including modeling and interpretation, and may not meet National Map Accuracy Standards. This information may be updated, corrected, or otherwise modified without notification.

For more information please contact:
 Wallowa-Whitman National Forest at 541-523-6391
 The USDA is an equal opportunity provider and employer.



Blue Mountains Forest Plan Revision FEIS (2018) Wallowa-Whitman National Forest Management Areas for Alternative C



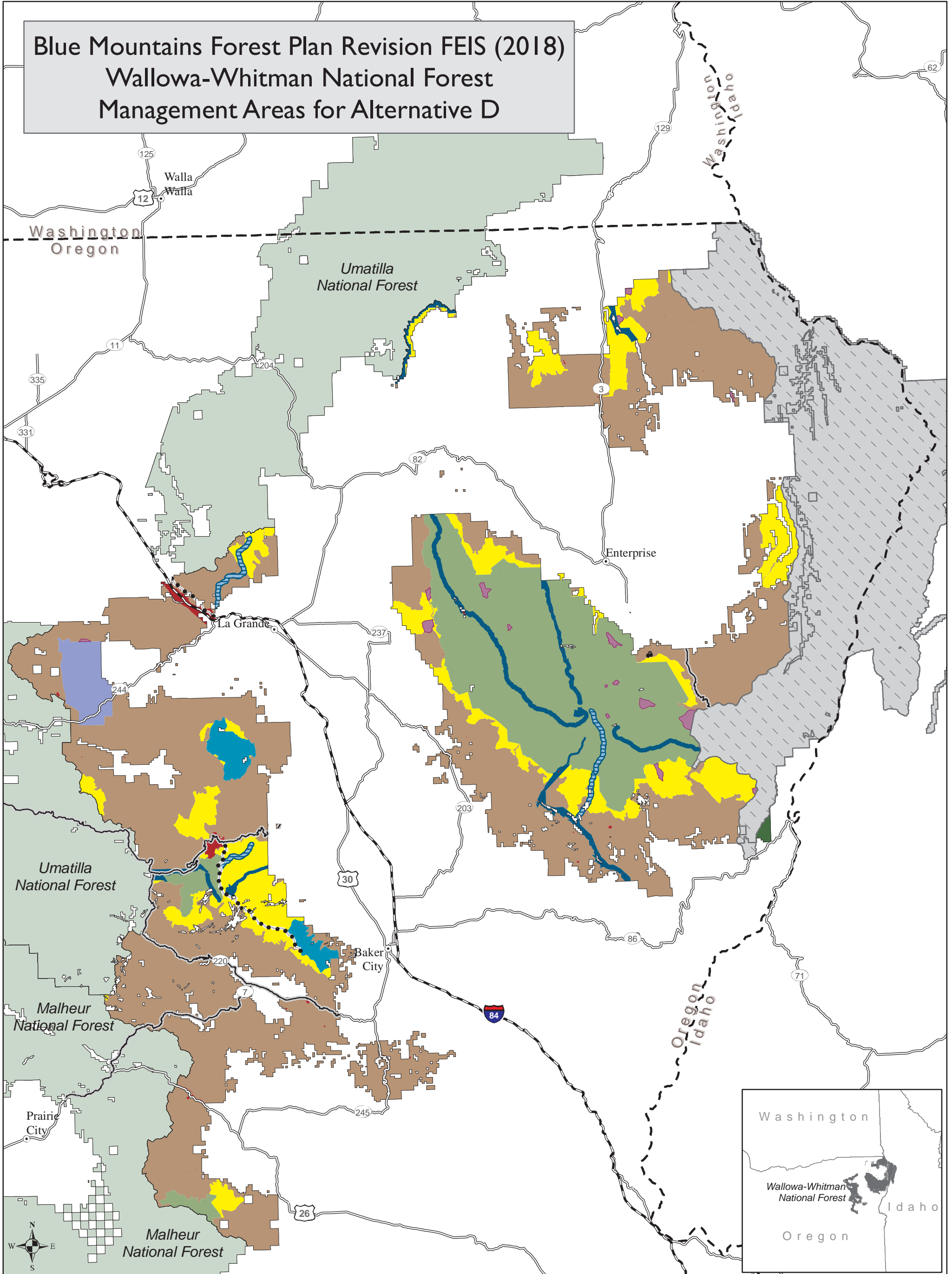
- Legend**
- IA Designated Wilderness Area
 - Preliminary Administratively Recommended IB Wilderness Area
 - IC Wilderness Study Area
 - 2A Designated Wild & Scenic River
 - 2A Eligible Wild & Scenic River
 - 2B Research Natural Area
 - 2I Starkey Experimental Forest and Range
 - 2J Municipal Watershed
 - 3A Backcountry (non-motorized use)
 - 3C Wildlife Corridor
 - 4A General Forest
 - 4C Old Forest
 - 5 Developed Site & Administrative Area
 - National Forest Administrative Boundary
 - Hells Canyon National Recreation Area
 - 2F Scenic Byway & All-American Road
 - 2G Nationally Designated Trail

This product is produced from information prepared by the USDA, Forest Service, or from other suppliers. The Forest Service cannot assure the reliability or suitability of this information for a particular purpose. The data and product accuracy may vary due to compilation from various sources, including modeling and interpretation, and may not meet National Map Accuracy Standards. This information may be updated, corrected, or otherwise modified without notification.

For more information please contact:
Wallowa-Whitman National Forest at 541-523-6391
The USDA is an equal opportunity provider and employer.



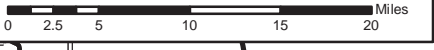
Blue Mountains Forest Plan Revision FEIS (2018) Wallowa-Whitman National Forest Management Areas for Alternative D



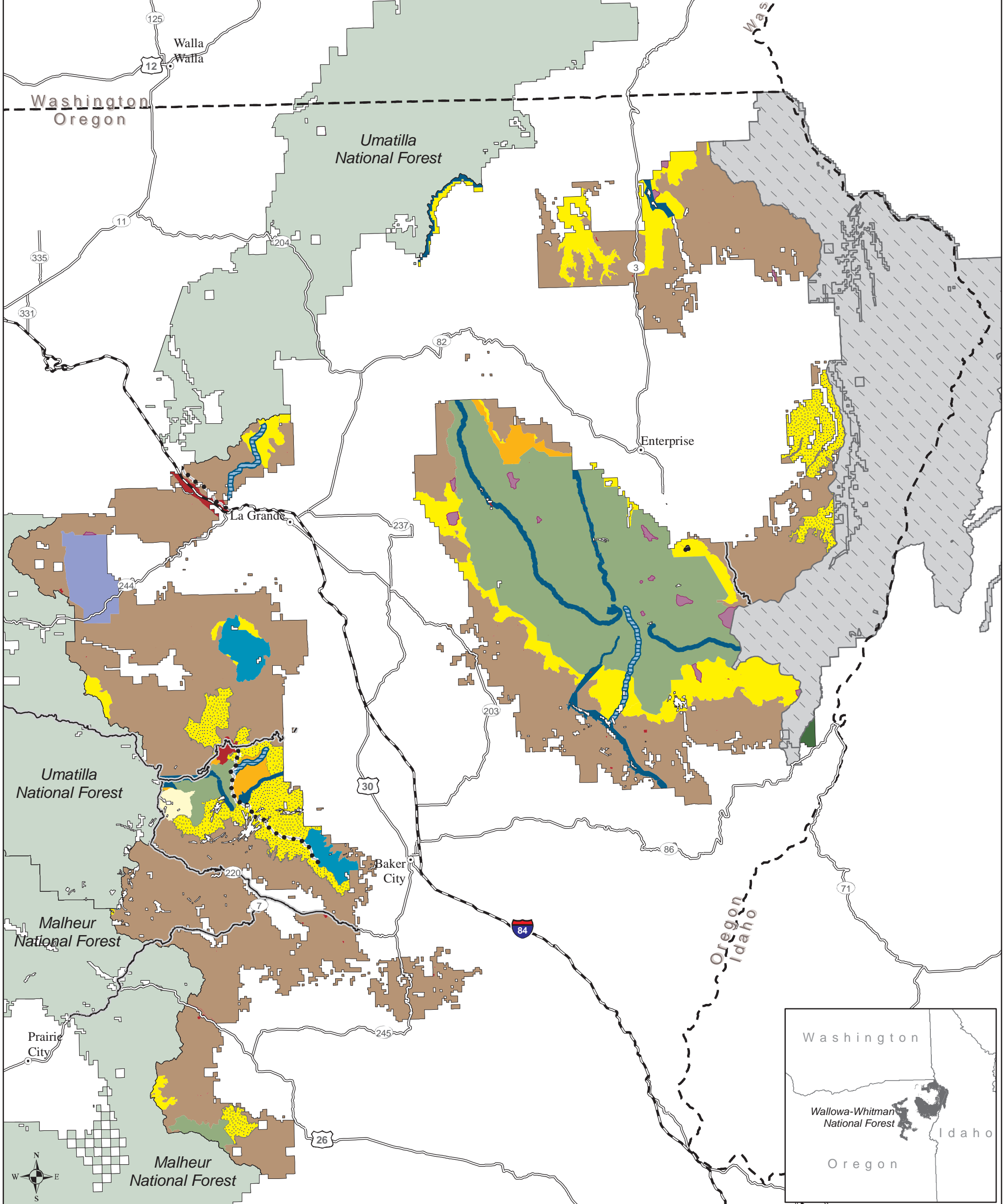
- Legend**
- IA Designated Wilderness Area
 - 2I Starkey Experimental Forest and Range
 - National Forest Administrative Boundary
 - IC Wilderness Study Area
 - 2J Municipal Watershed
 - Hells Canyon National Recreation Area
 - 2A Designated Wild & Scenic River
 - 3B Backcountry (motorized use)
 - 2A Suitable Wild & Scenic River
 - 4A General Forest
 - 2F Scenic Byway & All-American Road
 - 5 Developed Site & Administrative Area
 - 2B Research Natural Area
 - 2G Nationally Designated Trail

This product is produced from information prepared by the USDA, Forest Service, or from other suppliers. The Forest Service cannot assure the reliability or suitability of this information for a particular purpose. The data and product accuracy may vary due to compilation from various sources, including modeling and interpretation, and may not meet National Map Accuracy Standards. This information may be updated, corrected, or otherwise modified without notification.

For more information please contact:
Wallowa-Whitman National Forest at 541-523-6391
The USDA is an equal opportunity provider and employer.



Blue Mountains Forest Plan Revision FEIS (2018) Wallowa-Whitman National Forest Management Areas for Alternatives E and F



Legend

- | | | |
|---|--|---|
| IA Designated Wilderness Area | 2I Starkey Experimental Forest and Range | National Forest Administrative Boundary |
| Preliminary Administratively Recommended IB Wilderness Area | 2J Municipal Watershed | Hells Canyon National Recreation Area |
| IC Wilderness Study Area | 3A Backcountry (non-motorized use) | 2F Scenic Byway & All-American Road |
| 2A Designated Wild & Scenic River | 3B Backcountry (motorized use) | 2G Nationally Designated Trail |
| 2A Suitable Wild & Scenic River | 3C Wildlife Corridor | |
| 2B Research Natural Area | 4A General Forest | |
| 5 Developed Site & Administrative Area | | |

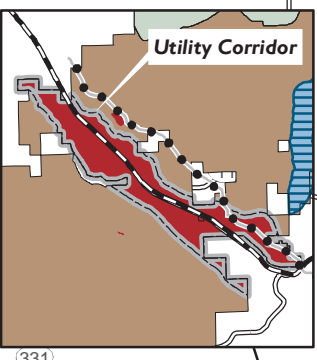
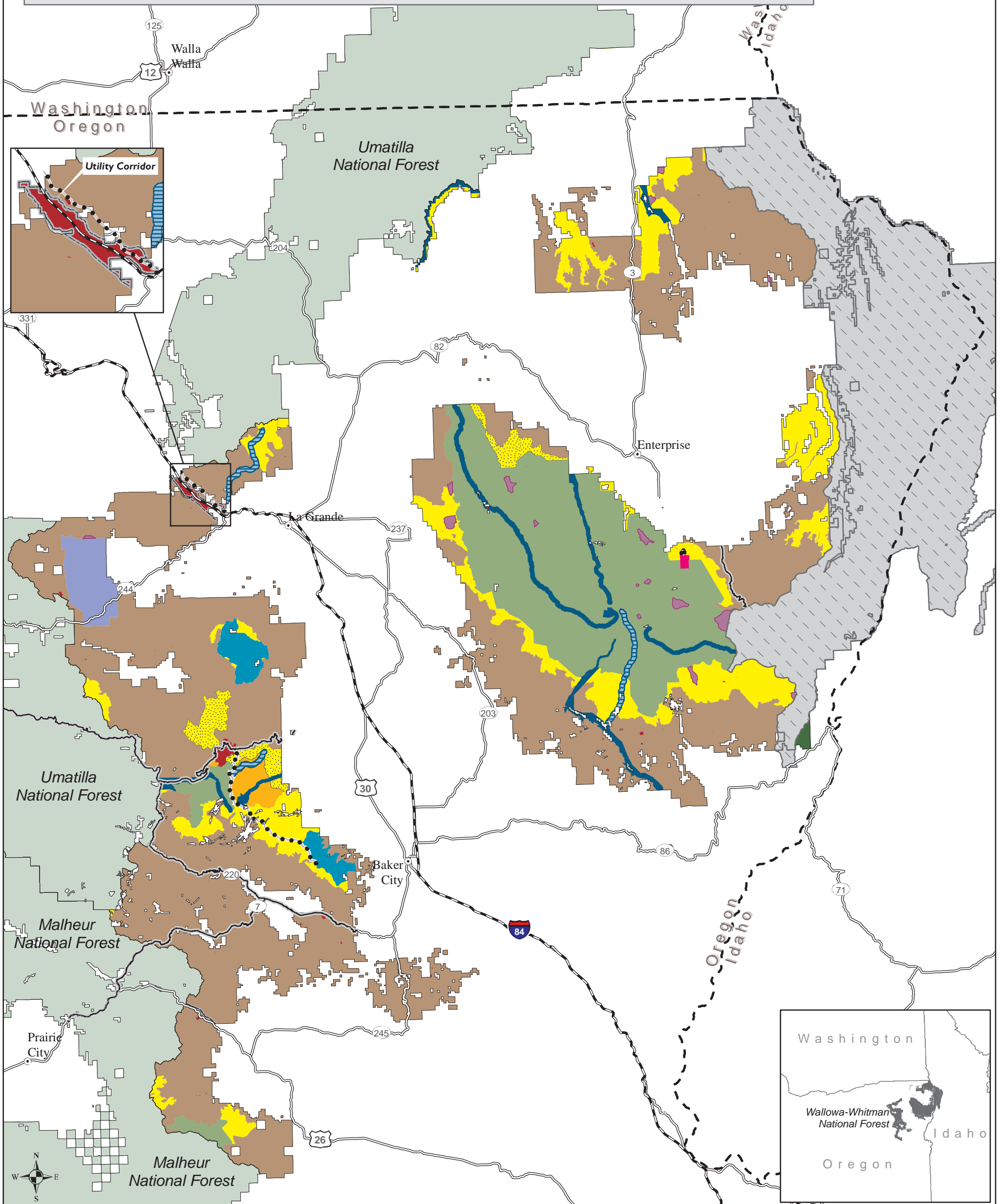


This product is produced from information prepared by the USDA, Forest Service, or from other suppliers. The Forest Service cannot assure the reliability or suitability of this information for a particular purpose. The data and product accuracy may vary due to compilation from various sources, including modeling and interpretation, and may not meet National Map Accuracy Standards. This information may be updated, corrected, or otherwise modified without notification.

For more information please contact:
Wallowa-Whitman National Forest at 541-523-6391
The USDA is an equal opportunity provider and employer.



Blue Mountains Forest Plan Revision FEIS (2018) Wallowa-Whitman National Forest Management Areas for Alternatives E-Modified and E-Modified Departure



- Legend**
- | | | |
|---|--|---|
| IA Designated Wilderness Area | 2I Starkey Experimental Forest and Range | National Forest Administrative Boundary |
| Preliminary Administratively Recommended IB Wilderness Area | 2J Municipal Watershed | Hells Canyon National Recreation Area |
| IC Wilderness Study Area | 3A Backcountry (non-motorized use) | Utility Corridor |
| 2A Designated Wild & Scenic River | 3B Backcountry (motorized use) | 2F Scenic Byway & All-American Road |
| 2A Suitable Wild & Scenic River | 4A General Forest | 2G Nationally Designated Trail |
| 2B Research Natural Area | 5 Developed Site & Administrative Area | |
| 2C Botanical Area | | |

This product is produced from information prepared by the USDA, Forest Service, or from other suppliers. The Forest Service cannot assure the reliability or suitability of this information for a particular purpose. The data and product accuracy may vary due to compilation from various sources, including modeling and interpretation, and may not meet National Map Accuracy Standards. This information may be updated, corrected, or otherwise modified without notification.

For more information please contact:
Wallowa-Whitman National Forest at 541-523-6391
The USDA is an equal opportunity provider and employer.

0 2.5 5 10 15 20 Miles