

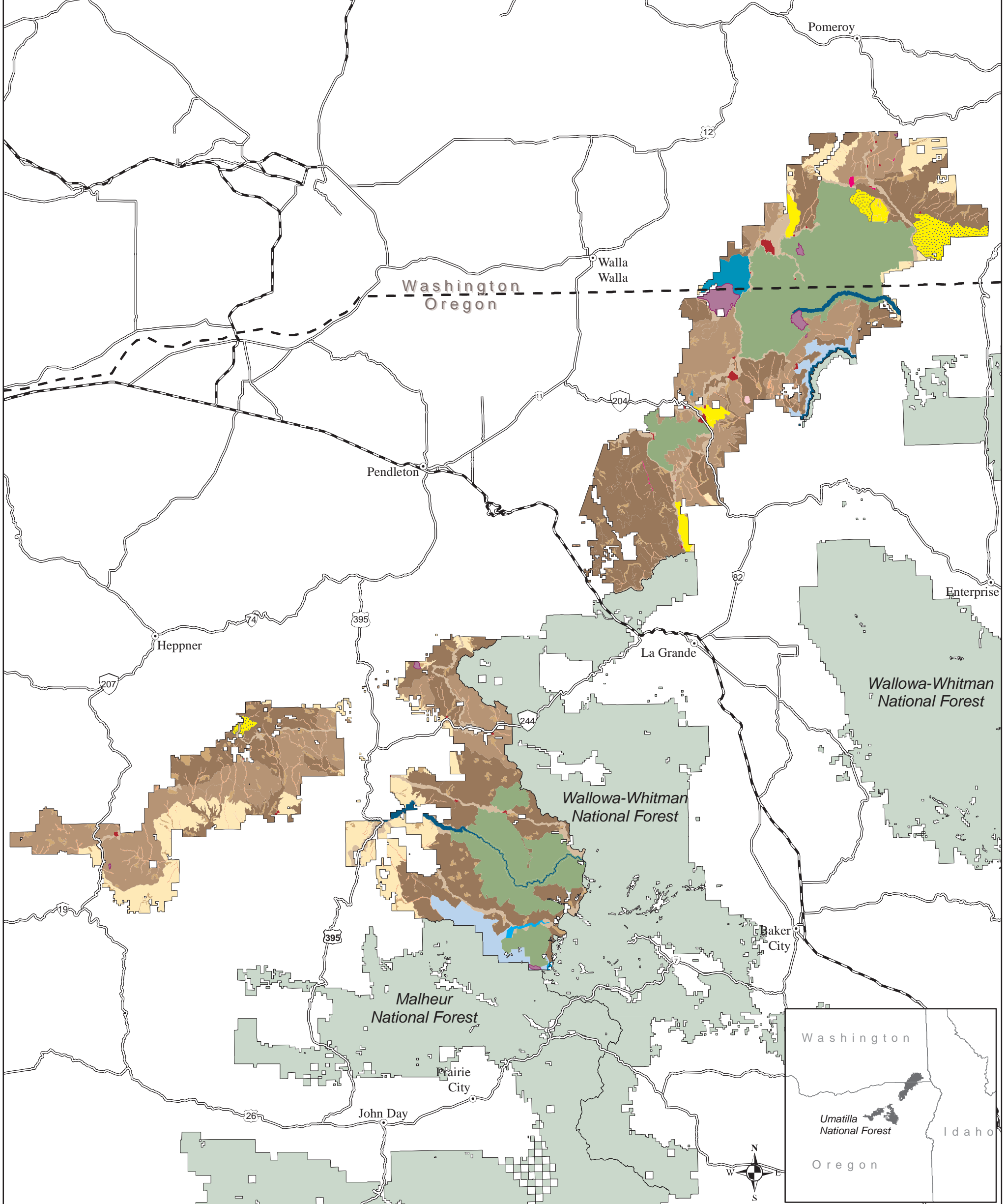
Appendix G: Maps

Umatilla National Forest

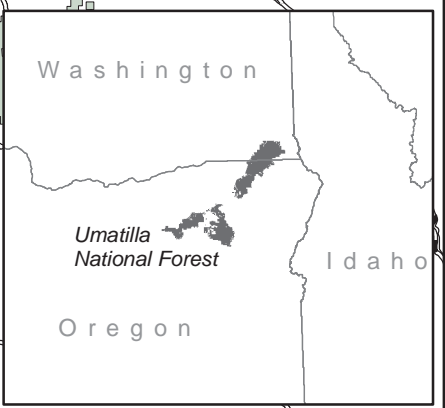
The following maps are displayed in an 11-inch by 17-inch format.

- Management Areas for Alternative A
- Management Areas for Alternative B
- Management Areas for Alternative C
- Management Areas for Alternative D
- Management Areas for Alternatives E and F
- Management Areas for Alternatives E-Modified and E-Modified Departure

Blue Mountains Forest Plan Revision FEIS (2018) Umatilla National Forest Management Areas for Alternative A



Legend		
	IA Designated Wilderness Area	
	2A Designated Wild & Scenic River	
	2B Research Natural Area	
	2C Botanical Area	
	2D Geologic Area	
	2E Historic Area	
	2H Scenic Area	
	2J Municipal Watershed	
	3A Backcountry (non-motorized use)	
	3B Backcountry (motorized use)	
	4A General Forest	
	4B Riparian Management Area	
	4C Old Forest	
	4D Big Game Winter/Summer Range	
	4E Wildlife/Fish Emphasis	
	4F Visuals	
	5 Developed Site & Administrative Area	
	National Forest Administrative Boundary	



This product is produced from information prepared by the USDA, Forest Service, or from other suppliers. The Forest Service cannot assure the reliability or suitability of this information for a particular purpose. The data and product accuracy may vary due to compilation from various sources, including modeling and interpretation, and may not meet National Map Accuracy Standards. This information may be updated, corrected, or otherwise modified without notification.

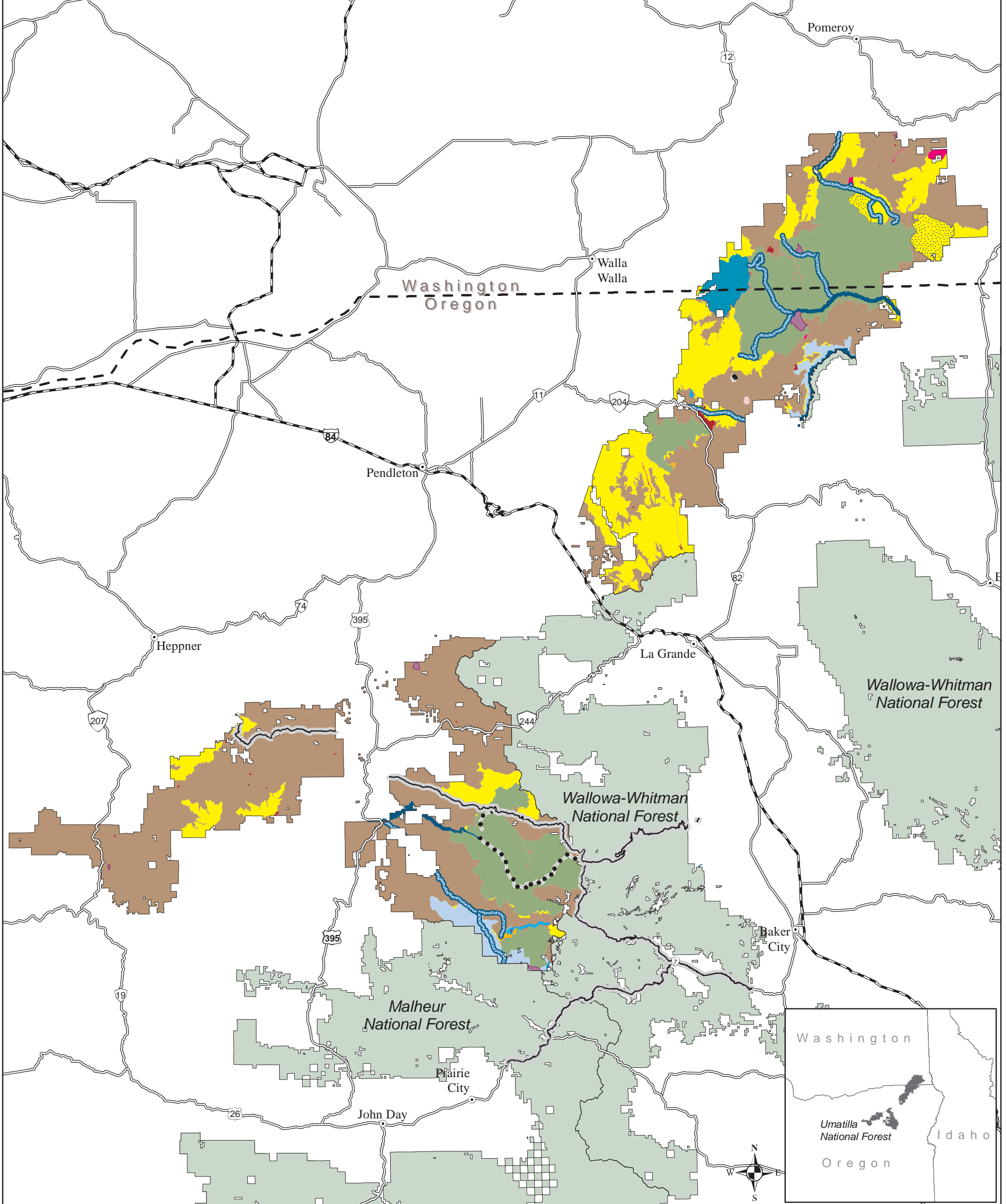
For more information please contact:
Umatilla National Forest at 541-278-3716
The USDA is an equal opportunity provider and employer.

0 3 6 12 18 24 Miles

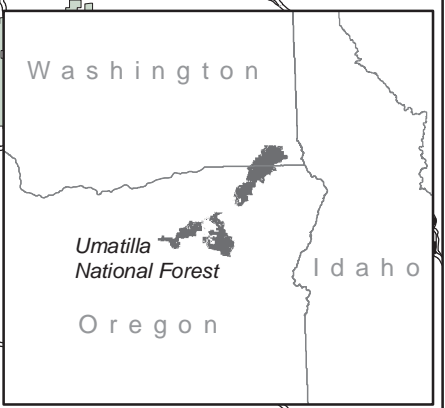
Blue Mountains Forest Plan Revision FEIS (2018)

Umatilla National Forest

Management Areas for Alternative B



Legend		
 IA Designated Wilderness Area	 2E Historic Area	 National Forest Administrative Boundary
 Preliminary Administratively Recommended IB Wilderness Area	 2H Scenic Area	 2F Scenic Byway & All-American Road
 2A Designated Wild & Scenic River	 2J Municipal Watershed	 2G Nationally Designated Trail
 2A Eligible Wild & Scenic River	 3A Backcountry (non-motorized use)	
 2B Research Natural Area	 3B Backcountry (motorized use)	
 2C Botanical Area	 4A General Forest	
 2D Geologic Area	 5 Developed Site & Administrative Area	



This product is produced from information prepared by the USDA, Forest Service, or from other suppliers. The Forest Service cannot assure the reliability or suitability of this information for a particular purpose. The data and product accuracy may vary due to compilation from various sources, including modeling and interpretation, and may not meet National Map Accuracy Standards. This information may be updated, corrected, or otherwise modified without notification.

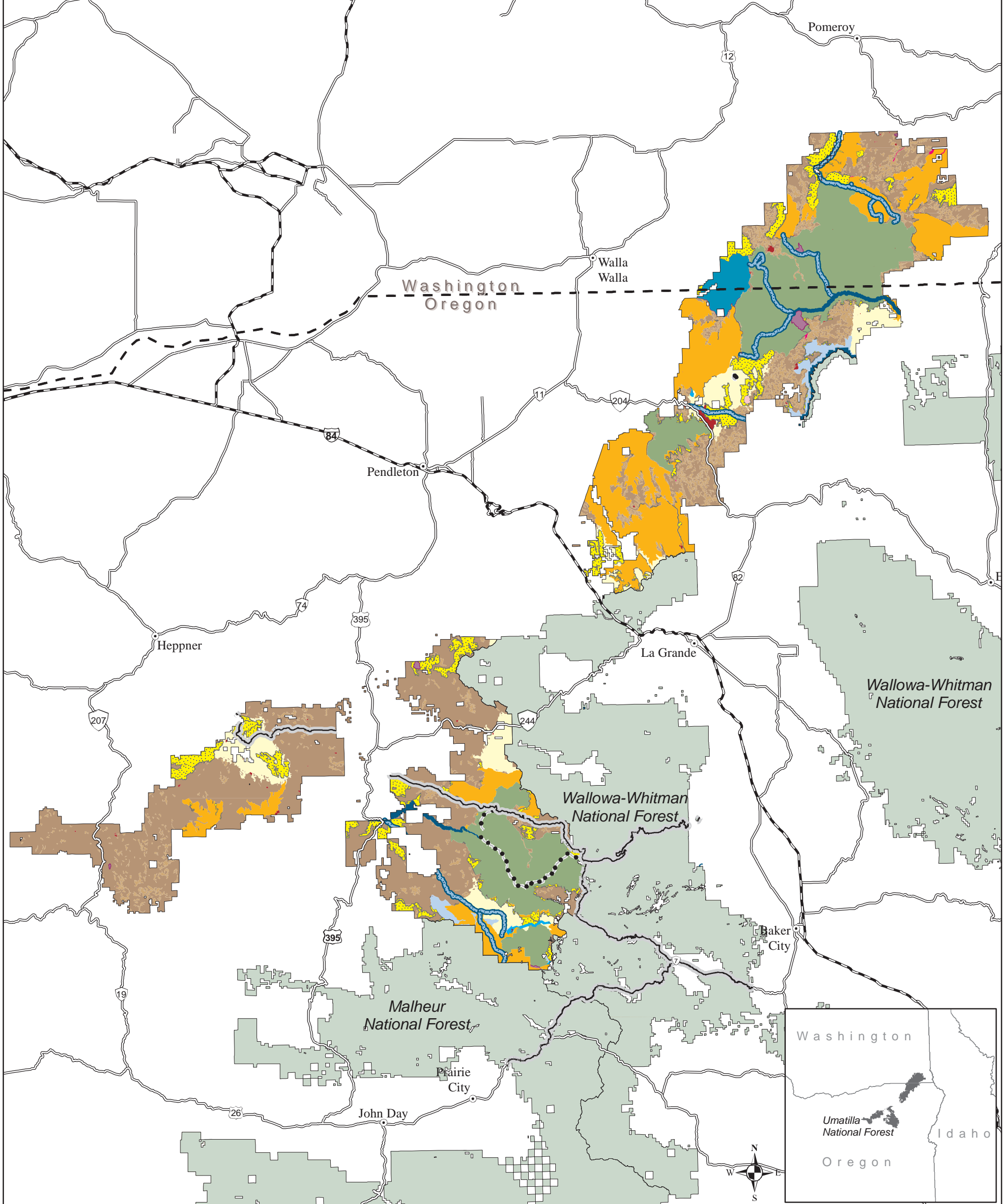
For more information please contact:
 Umatilla National Forest at 541-278-3716
 The USDA is an equal opportunity provider and employer.

0 3 6 12 18 24 Miles

Blue Mountains Forest Plan Revision FEIS (2018)

Umatilla National Forest

Management Areas for Alternative C



Legend

- | | | |
|--|--|---|
| IA Designated Wilderness Area | 2E Historic Area | National Forest Administrative Boundary |
| Preliminary Administratively Recommended Wilderness Area | 2H Scenic Area | 2F Scenic Byway & All-American Road |
| IB Wilderness Area | 2J Municipal Watershed | 2G Nationally Designated Trail |
| 2A Designated Wild & Scenic River | 3A Backcountry (non-motorized use) | |
| 2A Eligible Wild & Scenic River | 3C Wildlife Corridor | |
| 2B Research Natural Area | 4A General Forest | |
| 2C Botanical Area | 4C Old Forest | |
| 2D Geologic Area | 5 Developed Site & Administrative Area | |

This product is produced from information prepared by the USDA, Forest Service, or from other suppliers. The Forest Service cannot assure the reliability or suitability of this information for a particular purpose. The data and product accuracy may vary due to compilation from various sources, including modeling and interpretation, and may not meet National Map Accuracy Standards. This information may be updated, corrected, or otherwise modified without notification.

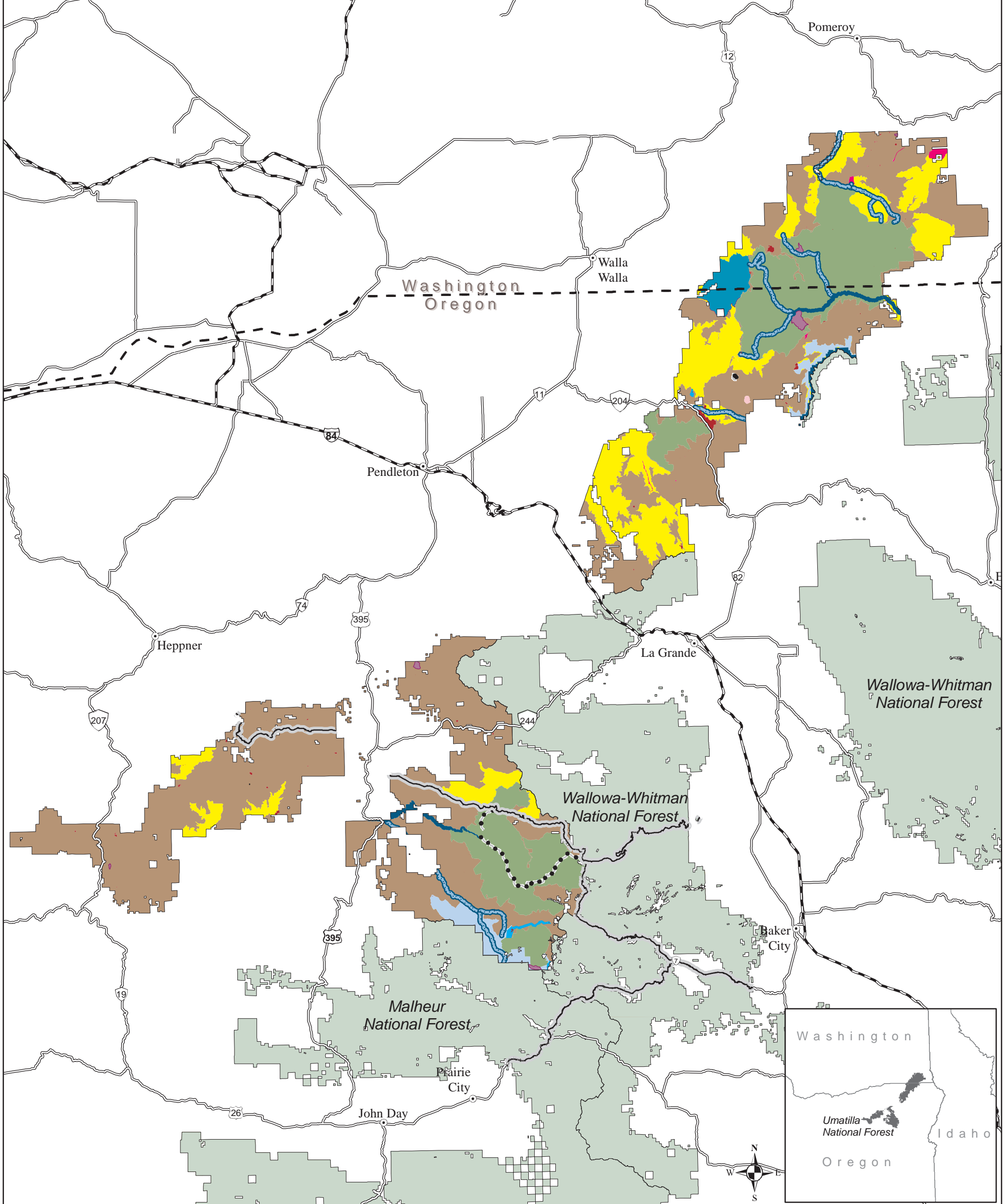
For more information please contact:
 Umatilla National Forest at 541-278-3716
 The USDA is an equal opportunity provider and employer.



Blue Mountains Forest Plan Revision FEIS (2018)

Umatilla National Forest

Management Areas for Alternative D



Legend

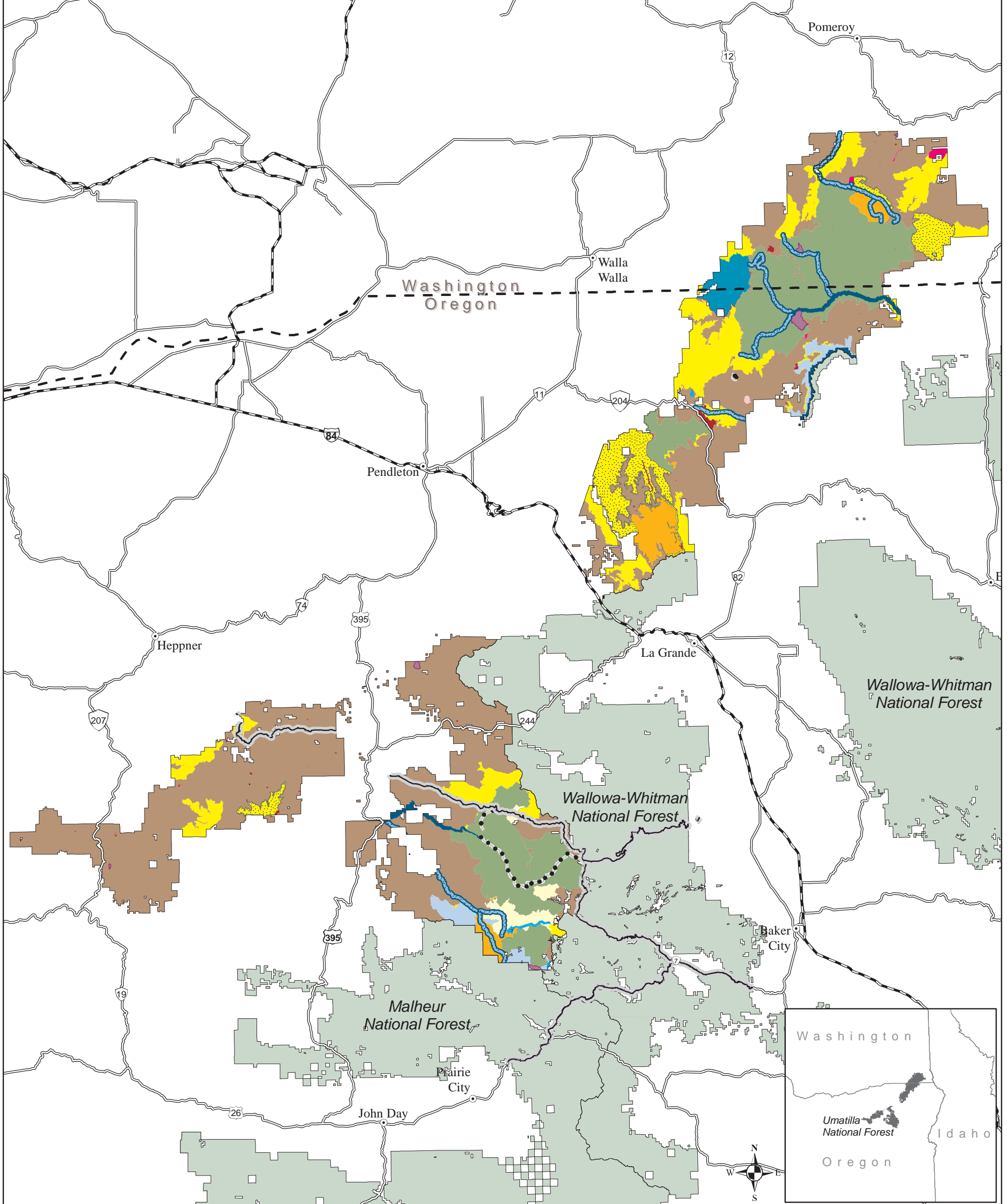
- | | | |
|-----------------------------------|--|---|
| IA Designated Wilderness Area | 2E Historic Area | National Forest Administrative Boundary |
| 2A Designated Wild & Scenic River | 2H Scenic Area | 2F Scenic Byway & All-American Road |
| 2A Eligible Wild & Scenic River | 2J Municipal Watershed | 2G Nationally Designated Trail |
| 2B Research Natural Area | 3B Backcountry (motorized use) | |
| 2C Botanical Area | 4A General Forest | |
| 2D Geologic Area | 5 Developed Site & Administrative Area | |

This product is produced from information prepared by the USDA, Forest Service, or from other suppliers. The Forest Service cannot assure the reliability or suitability of this information for a particular purpose. The data and product accuracy may vary due to compilation from various sources, including modeling and interpretation, and may not meet National Map Accuracy Standards. This information may be updated, corrected, or otherwise modified without notification.

For more information please contact:
 Umatilla National Forest at 541-278-3716
 The USDA is an equal opportunity provider and employer.



Blue Mountains Forest Plan Revision FEIS (2018) Umatilla National Forest Management Areas for Alternatives E and F



Legend

- | | | |
|--|--|---|
| IA Designated Wilderness Area | 2E Historic Area | National Forest Administrative Boundary |
| Preliminary Administratively Recommended Wilderness Area | 2H Scenic Area | 2F Scenic Byway & All-American Road |
| IB Wilderness Area | 2J Municipal Watershed | 2G Nationally Designated Trail |
| 2A Designated Wild & Scenic River | 3A Backcountry (non-motorized use) | |
| 2A Eligible Wild & Scenic River | 3B Backcountry (motorized use) | |
| 2B Research Natural Area | 3C Wildlife Corridor | |
| 2C Botanical Area | 4A General Forest | |
| 2D Geologic Area | 5 Developed Site & Administrative Area | |

This product is produced from information prepared by the USDA, Forest Service, or from other suppliers. The Forest Service cannot assure the reliability or suitability of this information for a particular purpose. The data and product accuracy may vary due to compilation from various sources, including modeling and interpretation, and may not meet National Map Accuracy Standards. This information may be updated, corrected, or otherwise modified without notification.

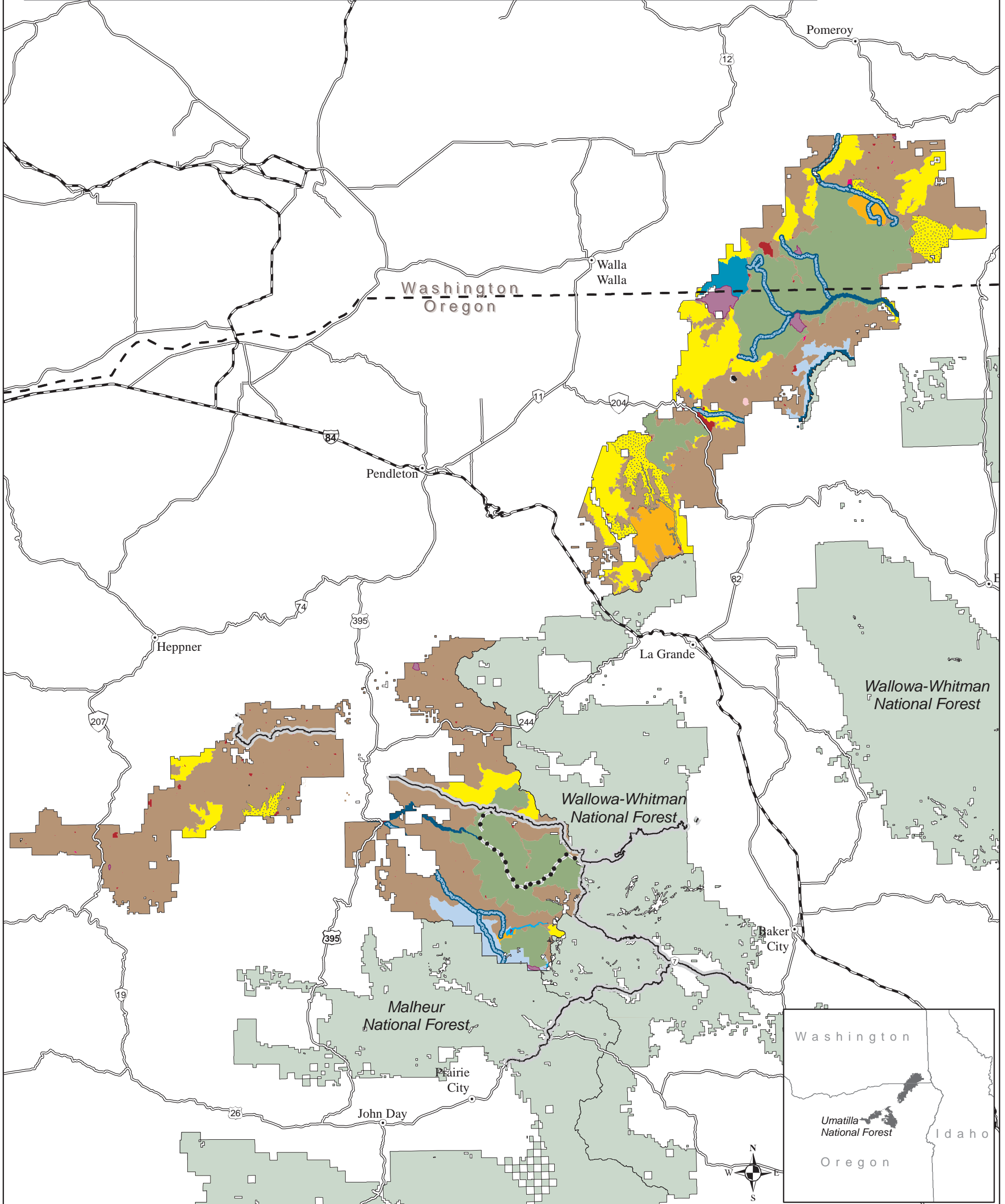
For more information please contact:
Umatilla National Forest at 541-278-3716
The USDA is an equal opportunity provider and employer.



Blue Mountains Forest Plan Revision FEIS (2018)

Umatilla National Forest

Management Areas for Alternatives E-Modified and E-Modified Departure



Legend

- | | | |
|---|--|---|
| <ul style="list-style-type: none"> IA Designated Wilderness Area Preliminary Administratively Recommended Wilderness Area 2A Designated Wild & Scenic River 2A Eligible Wild & Scenic River 2B Research Natural Area 2C Botanical Area 2D Geologic Area | <ul style="list-style-type: none"> 2E Historic Area 2H Scenic Area 2J Municipal Watershed 3A Backcountry (non-motorized use) 3B Backcountry (motorized use) 4A General Forest 5 Developed Site & Administrative Area | <ul style="list-style-type: none"> National Forest Administrative Boundary 2F Scenic Byway & All-American Road 2G Nationally Designated Trail |
|---|--|---|



This product is produced from information prepared by the USDA, Forest Service, or from other suppliers. The Forest Service cannot assure the reliability or suitability of this information for a particular purpose. The data and product accuracy may vary due to compilation from various sources, including modeling and interpretation, and may not meet National Map Accuracy Standards. This information may be updated, corrected, or otherwise modified without notification.

For more information please contact:
 Umatilla National Forest at 541-278-3716
 The USDA is an equal opportunity provider and employer.

