

Appendix G: Maps

Malheur National Forest

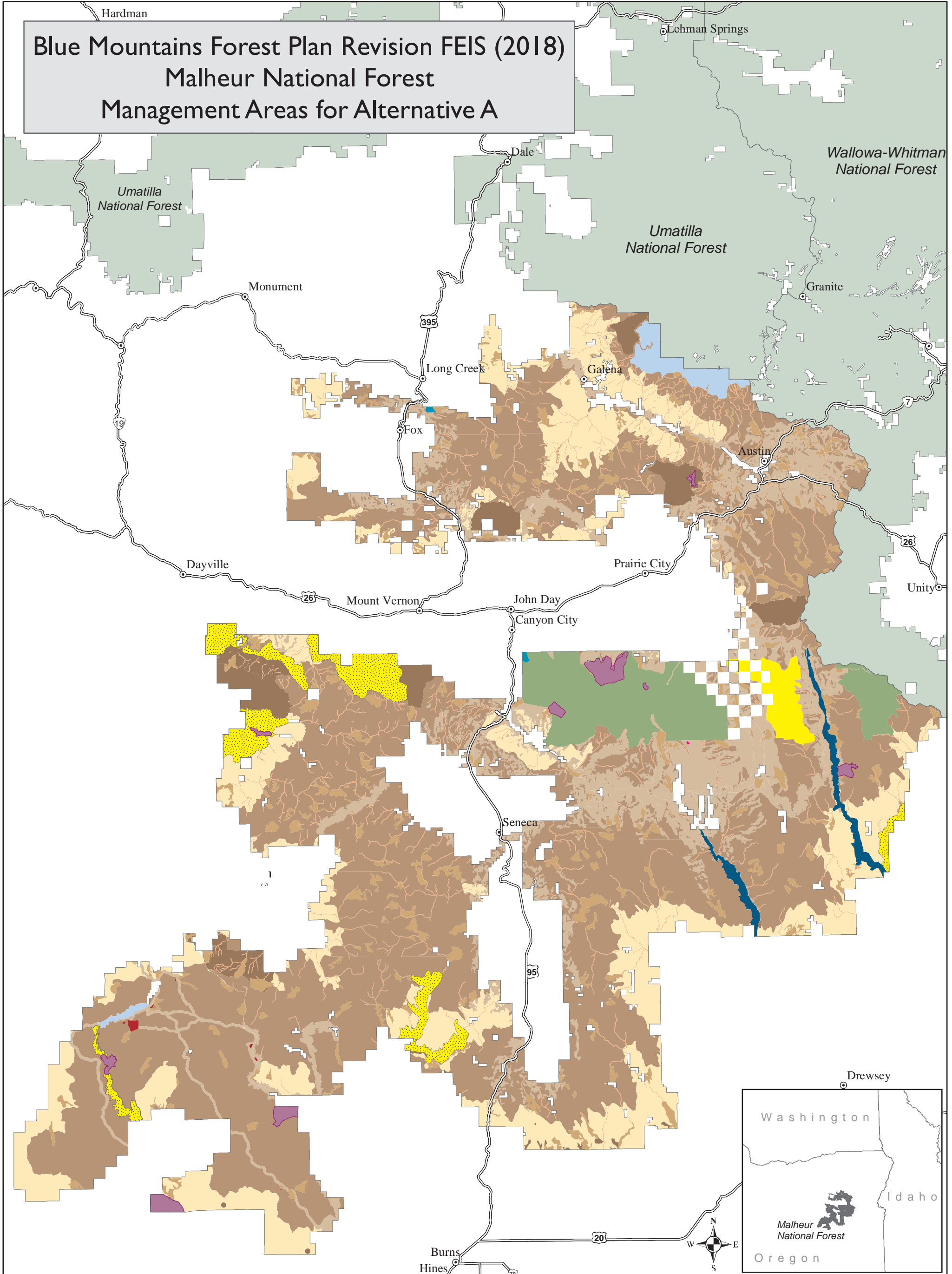
The following maps are displayed in an 11-inch by 17-inch format.

- Management Areas for Alternative A
- Management Areas for Alternative B
- Management Areas for Alternative C
- Management Areas for Alternative D
- Management Areas for Alternatives E and F
- Management Areas for Alternatives E-Modified and E-Modified Departure

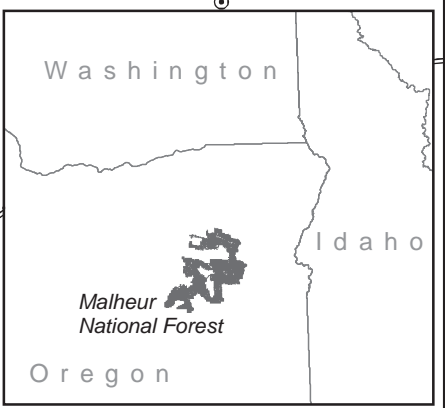
Blue Mountains Forest Plan Revision FEIS (2018)

Malheur National Forest

Management Areas for Alternative A



Legend					
	1A Designated Wilderness Area		3A Backcountry (non-motorized use)		5 Developed Site & Administrative Area
	2A Designated Wild & Scenic River		3B Backcountry (motorized use)		National Forest Administrative Boundary
	2B Research Natural Area		4A General Forest		
	2C Botanical Area		4B Riparian Management Area		
	2D Geologic Area		4C Old Forest		
	2H Scenic Area		4D Big Game Winter/Summer Range		
	2J Municipal Watershed		4E Wildlife/Fish Emphasis		
			4F Visuals		



This product is produced from information prepared by the USDA, Forest Service, or from other suppliers. The Forest Service cannot assure the reliability or suitability of this information for a particular purpose. The data and product accuracy may vary due to compilation from various sources, including modeling and interpretation, and may not meet National Map Accuracy Standards. This information may be updated, corrected, or otherwise modified without notification.

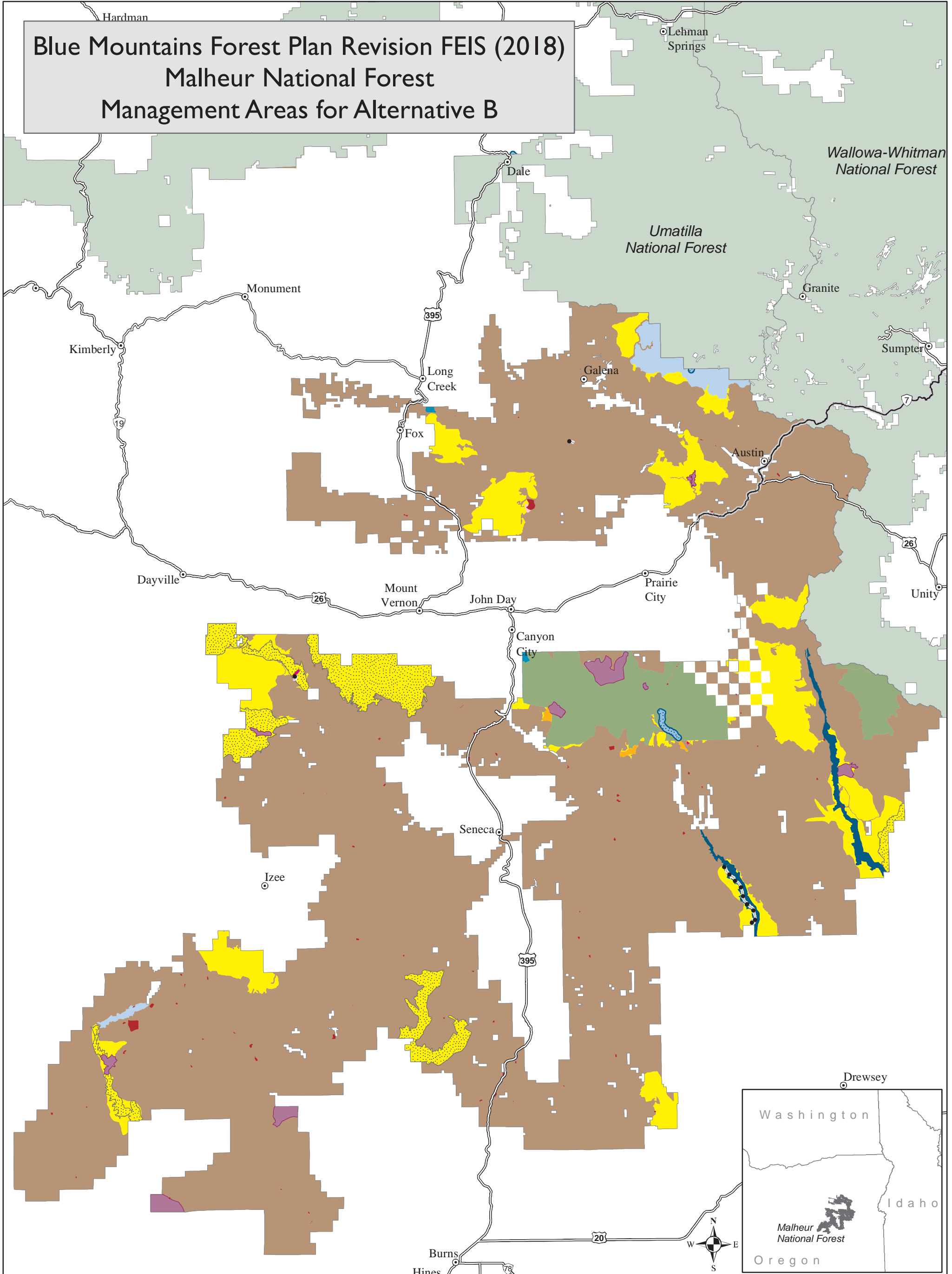
For more information please contact:
 Malheur National Forest at 541-575-3000
 The USDA is an equal opportunity provider and employer.

0 1.75 3.5 7 10.5 14 Miles

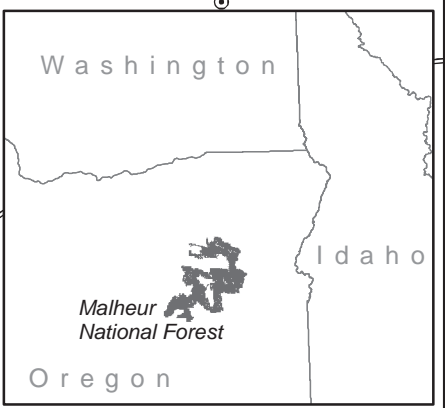
Blue Mountains Forest Plan Revision FEIS (2018)

Malheur National Forest

Management Areas for Alternative B



- Legend**
- | | | |
|---|--|---|
| IA Designated Wilderness Area | 2H Scenic Area | National Forest Administrative Boundary |
| Preliminary Administratively Recommended IB Wilderness Area | 2J Municipal Watershed | 2F Scenic Byway & All-American Road |
| 2A Designated Wild & Scenic River | 3A Backcountry (non-motorized use) | 2G Nationally Designated Trail |
| 2A Eligible Wild & Scenic River | 3B Backcountry (motorized use) | |
| 2B Research Natural Area | 4A General Forest | |
| 2C Botanical Area | 5 Developed Site & Administrative Area | |
| 2D Geologic Area | | |



This product is produced from information prepared by the USDA, Forest Service, or from other suppliers. The Forest Service cannot assure the reliability or suitability of this information for a particular purpose. The data and product accuracy may vary due to compilation from various sources, including modeling and interpretation, and may not meet National Map Accuracy Standards. This information may be updated, corrected, or otherwise modified without notification.

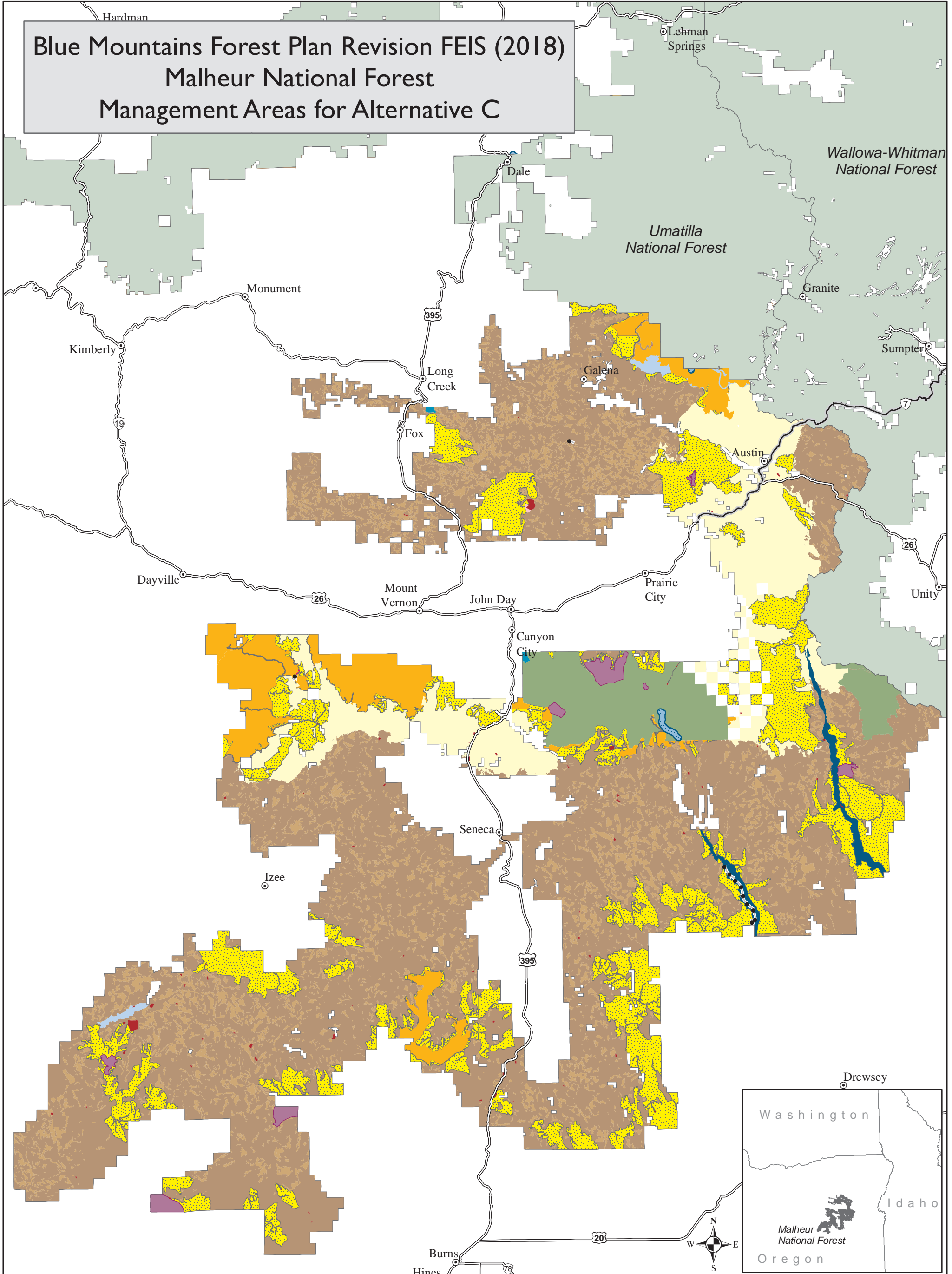
For more information please contact:
 Malheur National Forest at 541-575-3000
 The USDA is an equal opportunity provider and employer.

0 1.75 3.5 7 10.5 14 Miles

Blue Mountains Forest Plan Revision FEIS (2018)

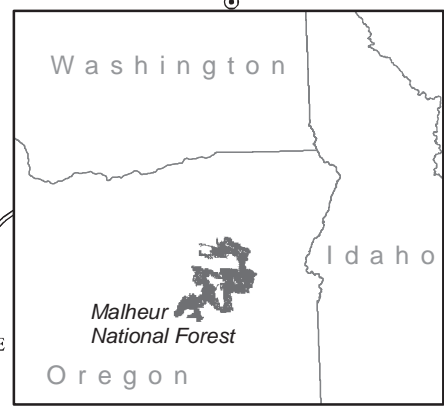
Malheur National Forest

Management Areas for Alternative C



Legend

- | | | |
|---|--|---|
| IA Designated Wilderness Area | 2H Scenic Area | National Forest Administrative Boundary |
| Preliminary Administratively Recommended IB Wilderness Area | 2J Municipal Watershed | 2F Scenic Byway & All-American Road |
| 2A Designated Wild & Scenic River | 3A Backcountry (non-motorized use) | 2G Nationally Designated Trail |
| 2A Eligible Wild & Scenic River | 3C Wildlife Corridor | |
| 2B Research Natural Area | 4A General Forest | |
| 2C Botanical Area | 4C Old Forest | |
| 2D Geologic Area | 5 Developed Site & Administrative Area | |

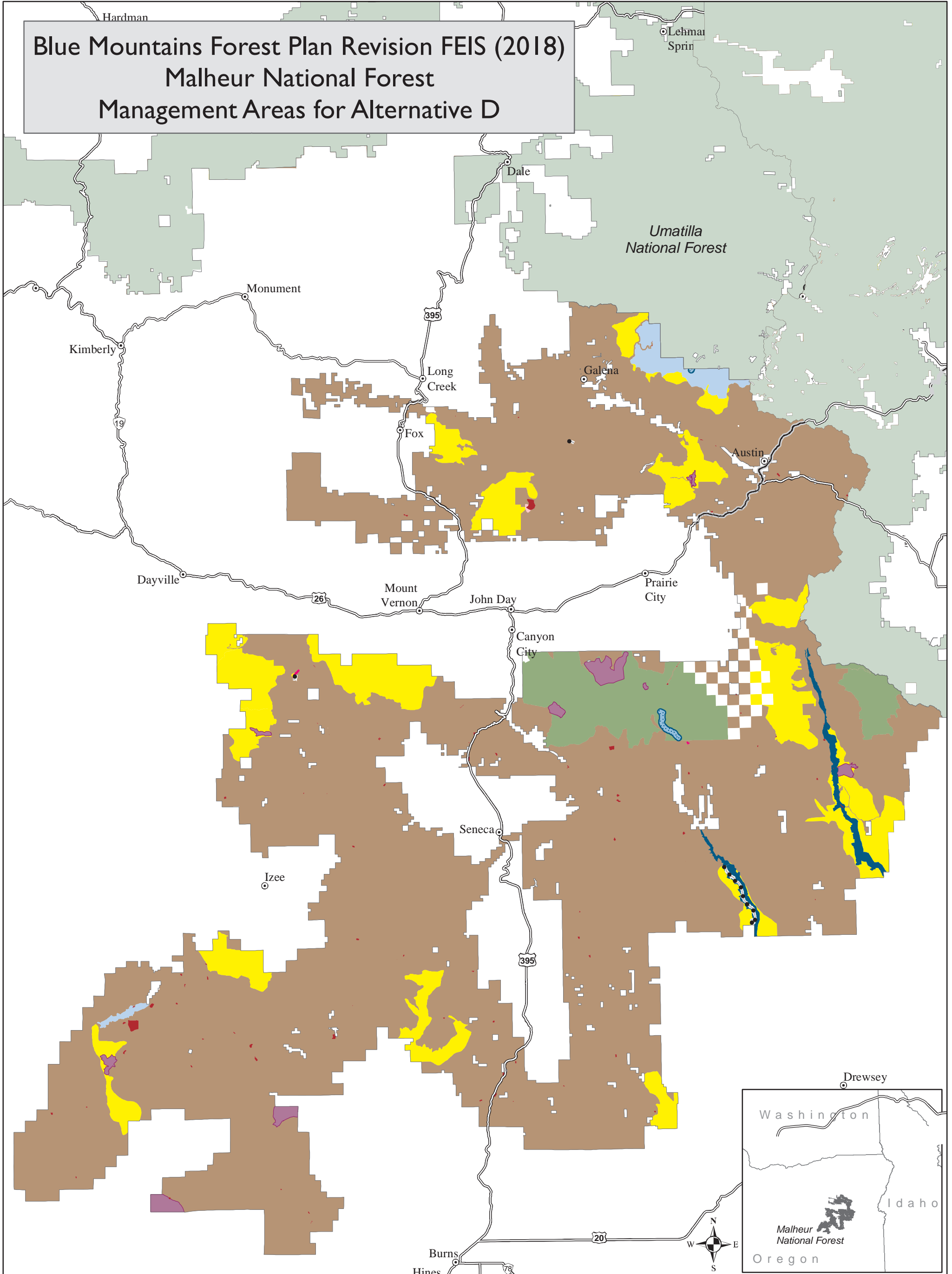


This product is produced from information prepared by the USDA, Forest Service, or from other suppliers. The Forest Service cannot assure the reliability or suitability of this information for a particular purpose. The data and product accuracy may vary due to compilation from various sources, including modeling and interpretation, and may not meet National Map Accuracy Standards. This information may be updated, corrected, or otherwise modified without notification.


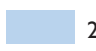












For more information please contact:
 Malheur National Forest at 541-575-3000
 The USDA is an equal opportunity provider and employer.



Blue Mountains Forest Plan Revision FEIS (2018) Malheur National Forest Management Areas for Alternative D



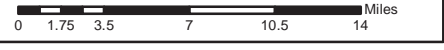
Legend

- | | | |
|--|--|---|
|  IA Designated Wilderness Area |  2H Scenic Area |  National Forest Administrative Boundary |
|  2A Designated Wild & Scenic River |  2J Municipal Watershed |  2F Scenic Byway & All-American Road |
|  2A Eligible Wild & Scenic River |  3B Backcountry (motorized use) |  2G Nationally Designated Trail |
|  2B Research Natural Area |  4A General Forest | |
|  2C Botanical Area |  5 Developed Site & Administrative Area | |
|  2D Geologic Area | | |

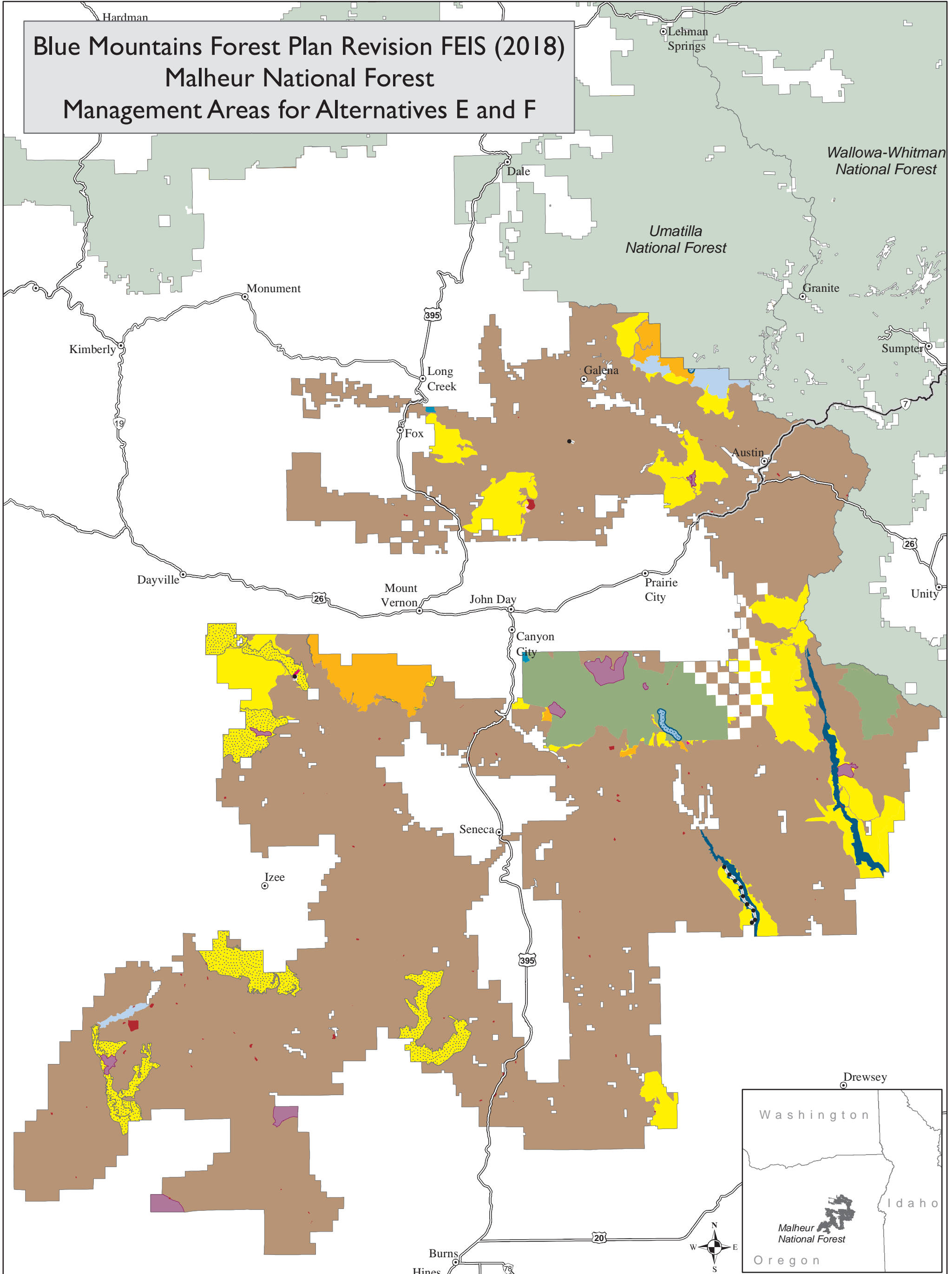


This product is produced from information prepared by the USDA, Forest Service, or from other suppliers. The Forest Service cannot assure the reliability or suitability of this information for a particular purpose. The data and product accuracy may vary due to compilation from various sources, including modeling and interpretation, and may not meet National Map Accuracy Standards. This information may be updated, corrected, or otherwise modified without notification.

For more information please contact:
Malheur National Forest at 541-575-3000
The USDA is an equal opportunity provider and employer.

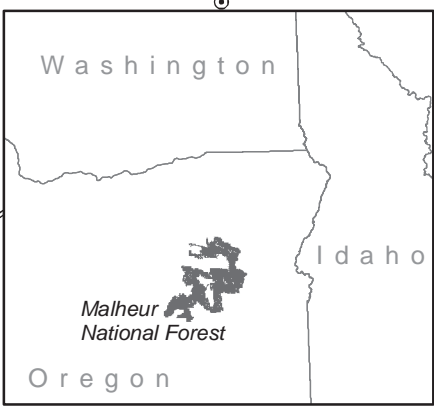


Blue Mountains Forest Plan Revision FEIS (2018) Malheur National Forest Management Areas for Alternatives E and F



Legend

- | | | |
|---|--|---|
| IA Designated Wilderness Area | 2H Scenic Area | National Forest Administrative Boundary |
| Preliminary Administratively Recommended IB Wilderness Area | 2J Municipal Watershed | 2F Scenic Byway & All-American Road |
| 2A Designated Wild & Scenic River | 3A Backcountry (non-motorized use) | 2G Nationally Designated Trail |
| 2A Eligible Wild & Scenic River | 3B Backcountry (motorized use) | |
| 2B Research Natural Area | 4A General Forest | |
| 2C Botanical Area | 5 Developed Site & Administrative Area | |
| 2D Geologic Area | | |



This product is produced from information prepared by the USDA, Forest Service, or from other suppliers. The Forest Service cannot assure the reliability or suitability of this information for a particular purpose. The data and product accuracy may vary due to compilation from various sources, including modeling and interpretation, and may not meet National Map Accuracy Standards. This information may be updated, corrected, or otherwise modified without notification.

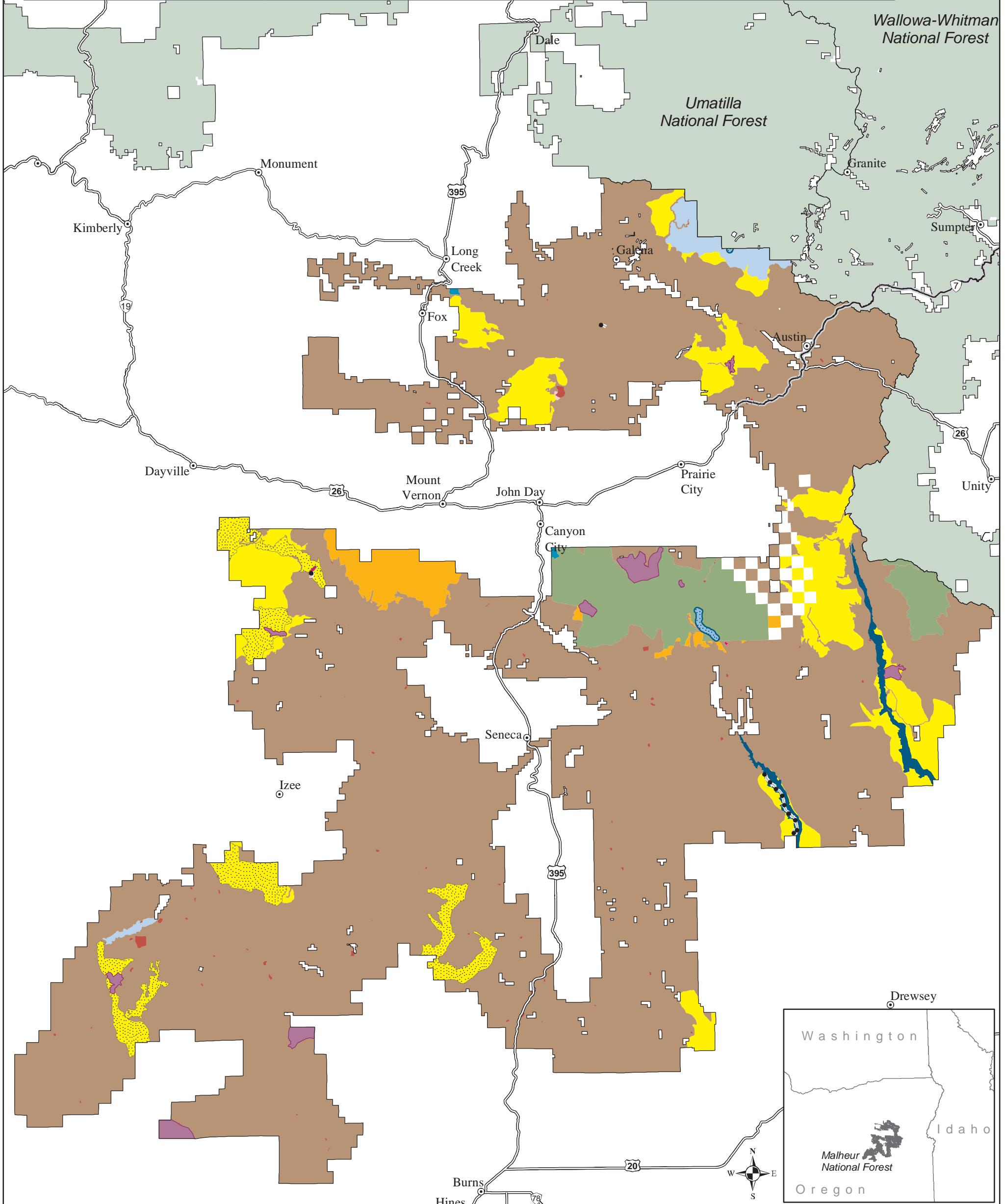
For more information please contact:
Malheur National Forest at 541-575-3000
The USDA is an equal opportunity provider and employer.

0 1.75 3.5 7 10.5 14 Miles

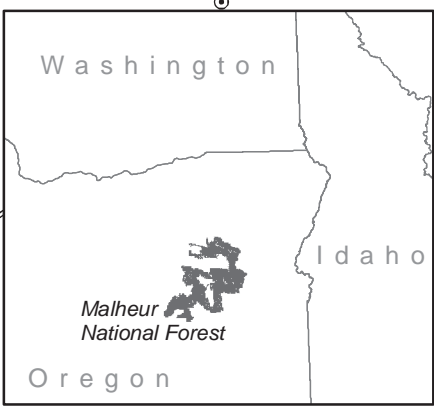
Blue Mountains Forest Plan Revision FEIS (2018)

Malheur National Forest

Management Areas for Alternatives E-Modified and E-Modified Departure



Legend		
 IA Designated Wilderness Area	 2H Scenic Area	 National Forest Administrative Boundary
 Preliminary Administratively Recommended Wilderness Area	 2J Municipal Watershed	 2F Scenic Byway & All-American Road
 2A Designated Wild & Scenic River	 3A Backcountry (non-motorized use)	 2G Nationally Designated Trail
 2A Eligible Wild & Scenic River	 3B Backcountry (motorized use)	
 2B Research Natural Area	 4A General Forest	
 2C Botanical Area	 5 Developed Site & Administrative Area	
 2D Geologic Area		



This product is produced from information prepared by the USDA, Forest Service, or from other suppliers. The Forest Service cannot assure the reliability or suitability of this information for a particular purpose. The data and product accuracy may vary due to compilation from various sources, including modeling and interpretation, and may not meet National Map Accuracy Standards. This information may be updated, corrected, or otherwise modified without notification.

For more information please contact:
 Malheur National Forest at 541-575-3000
 The USDA is an equal opportunity provider and employer.

Miles
 0 1.75 3.5 7 10.5 14