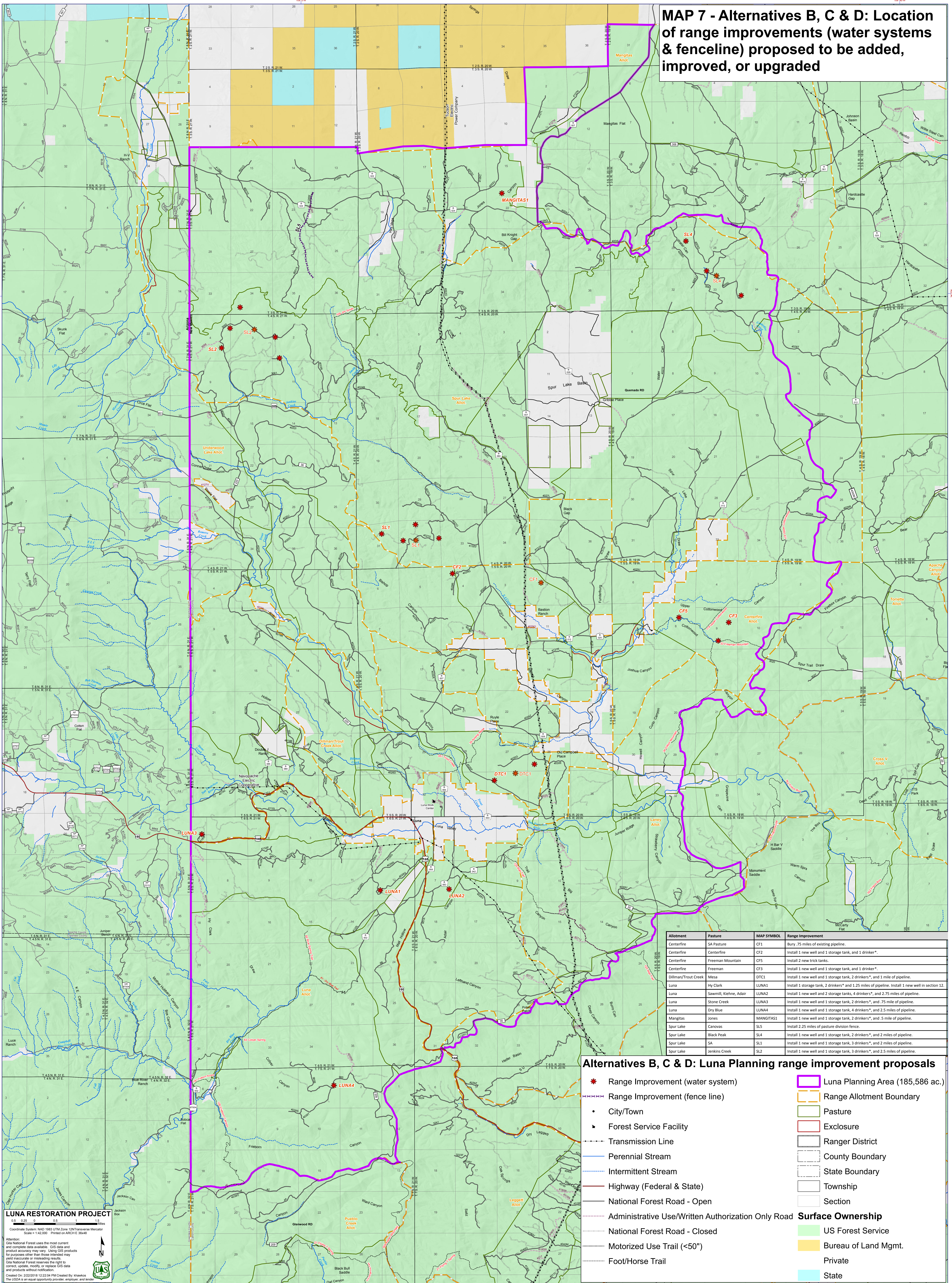


MAP 7 - Alternatives B, C & D: Location of range improvements (water systems & fenceline) proposed to be added, improved, or upgraded



Allotment	Pasture	MAP SYMBOL	Range Improvement
Centerfire	SA Pasture	CF1	Bury .75 miles of existing pipeline.
Centerfire	Centerfire	CF2	Install 1 new well and 1 storage tank, and 1 drinker*.
Centerfire	Freeman Mountain	CF5	Install 2 new trick tanks.
Centerfire	Freeman	CF3	Install 1 new well and 1 storage tank, and 1 drinker*.
Dillman/Trout Creek	Mesa	DTC1	Install 1 new well and 1 storage tank, 2 drinkers*, and 1 mile of pipeline.
Luna	Hy Clark	LUNA1	Install 1 storage tank, 2 drinkers* and 1.25 miles of pipeline. Install 1 new well in section 12.
Luna	Sawmill, Kehne, Adair	LUNA2	Install 1 new well and 2 storage tanks, 4 drinkers*, and 2.75 miles of pipeline.
Luna	Stone Creek	LUNA3	Install 1 new well and 1 storage tank, 4 drinkers*, and .75 mile of pipeline.
Luna	Dry Blue	LUNA4	Install 1 new well and 1 storage tank, 4 drinkers*, and 2.5 miles of pipeline.
Mangitas	Jones	MANGITAS1	Install 1 new well and 1 storage tank, 2 drinkers*, and .5 mile of pipeline.
Spurr Lake	Canovas	SL5	Install 2.25 miles of pasture division fence.
Spurr Lake	Black Peak	SL4	Install 1 new well and 1 storage tank, 2 drinkers*, and 2 miles of pipeline.
Spurr Lake	SA	SL1	Install 1 new well and 1 storage tank, 3 drinkers*, and 2 miles of pipeline.
Spurr Lake	Jenkins Creek	SL2	Install 1 new well and 1 storage tank, 3 drinkers*, and 2.5 miles of pipeline.

Alternatives B, C & D: Luna Planning range improvement proposals

- ★ Range Improvement (water system)
- Range Improvement (fence line)
- City/Town
- ▲ Forest Service Facility
- Transmission Line
- Perennial Stream
- Intermittent Stream
- Highway (Federal & State)
- National Forest Road - Open
- National Forest Road - Closed
- Motorized Use Trail (<50")
- Foot/Horse Trail
- Luna Planning Area (185,586 ac.)
- Range Allotment Boundary
- Pasture
- Enclosure
- Ranger District
- County Boundary
- State Boundary
- Township
- Section
- Surface Ownership**
- US Forest Service
- Bureau of Land Mgmt.
- Private
- State

LUNA RESTORATION PROJECT
 0 0.5 1 Miles
 Coordinate System: NAD 1983 UTM Zone 12N Transverse Mercator
 Scale: 1:42,000 Printed on ARCH E 36x48
 Attention: Giga National Forest uses the most current and complete data available. GIS data and product accuracy may vary. Using GIS products for purposes other than those intended may yield inaccurate or misleading results. Giga National Forest reserves the right to correct, update, modify, or replace GIS data and products without notification.
 Created On: 2/22/2019 12:22:34 PM Created By: khawkes
 The USDA is an equal opportunity provider, employer, and lender.