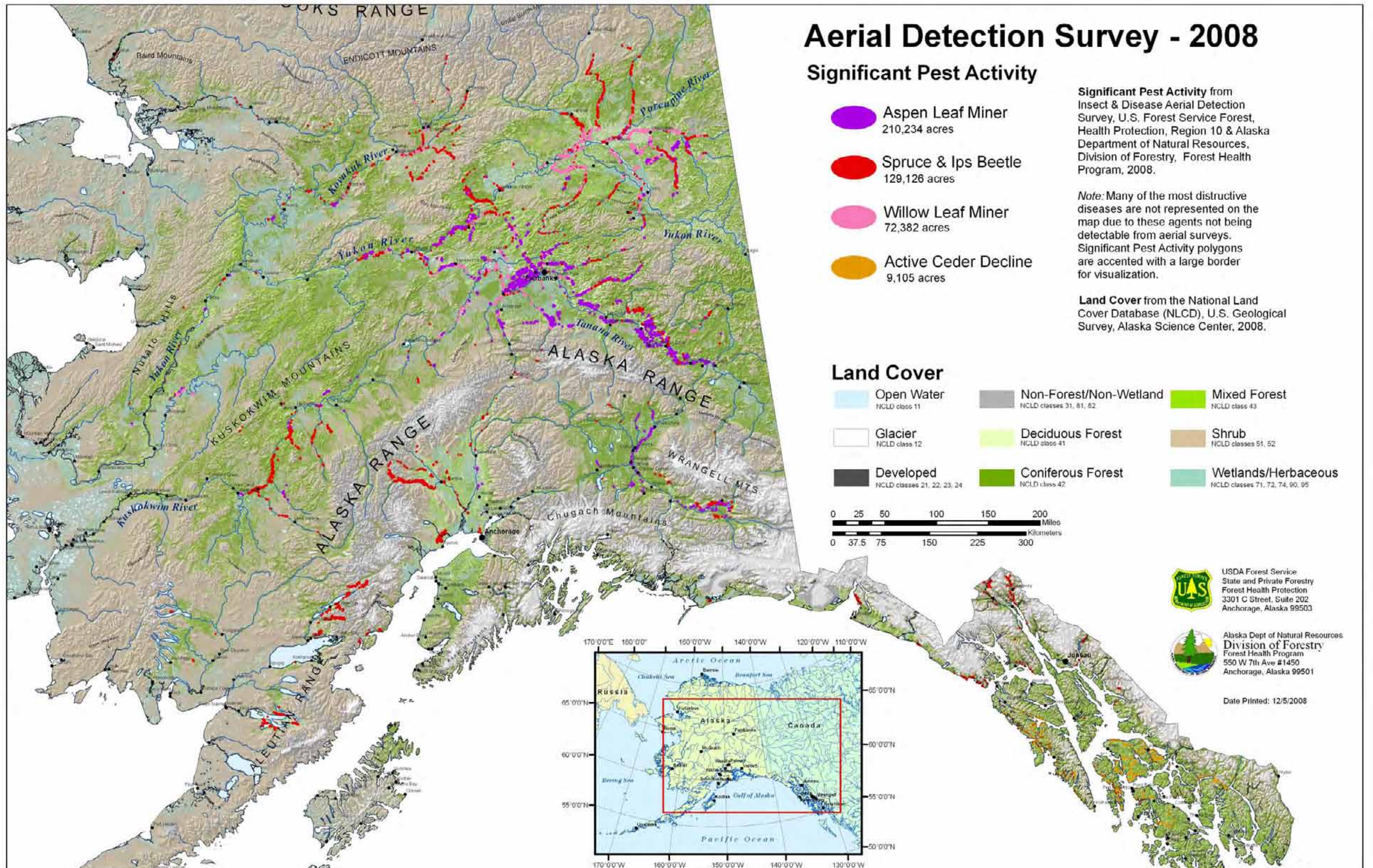


Map 1. General forest pest activity, from 2008 aerial survey



Aerial Detection Survey - 2008

Significant Pest Activity

- Aspen Leaf Miner
210,234 acres
- Spruce & Ips Beetle
129,126 acres
- Willow Leaf Miner
72,382 acres
- Active Cedar Decline
9,105 acres

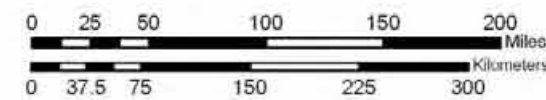
Significant Pest Activity from Insect & Disease Aerial Detection Survey, U.S. Forest Service Forest, Health Protection, Region 10 & Alaska Department of Natural Resources, Division of Forestry, Forest Health Program, 2008.

Note: Many of the most destructive diseases are not represented on the map due to these agents not being detectable from aerial surveys. Significant Pest Activity polygons are accented with a large border for visualization.

Land Cover from the National Land Cover Database (NLCD), U.S. Geological Survey, Alaska Science Center, 2008.

Land Cover

- | | | |
|--|--|--|
| Open Water
<small>NLCD class 11</small> | Non-Forest/Non-Wetland
<small>NLCD classes 31, 81, 82</small> | Mixed Forest
<small>NLCD class 43</small> |
| Glacier
<small>NLCD class 12</small> | Deciduous Forest
<small>NLCD class 41</small> | Shrub
<small>NLCD classes 51, 52</small> |
| Developed
<small>NLCD classes 21, 22, 23, 24</small> | Coniferous Forest
<small>NLCD class 42</small> | Wetlands/Herbaceous
<small>NLCD classes 71, 72, 74, 90, 95</small> |



USDA Forest Service
State and Private Forestry
Forest Health Protection
3301 C Street, Suite 202
Anchorage, Alaska 99503



Alaska Dept of Natural Resources
Division of Forestry
Forest Health Program
550 W 7th Ave #1450
Anchorage, Alaska 99501

Date Printed: 12/5/2008

Map 2. Survey flight paths and general ownership

