

Aerial Detection Survey - 2010

Significant Pest Activity

-  Aspen Leaf Miner
453,658 acres
-  Spruce & Ips Beetle
101,781 acres
-  Willow Leaf Miner
562,675 acres
-  Active Cedar Decline
30,507 acres
-  Spruce Aphid
40,680 acres
-  Alder Canker
44,230 acres

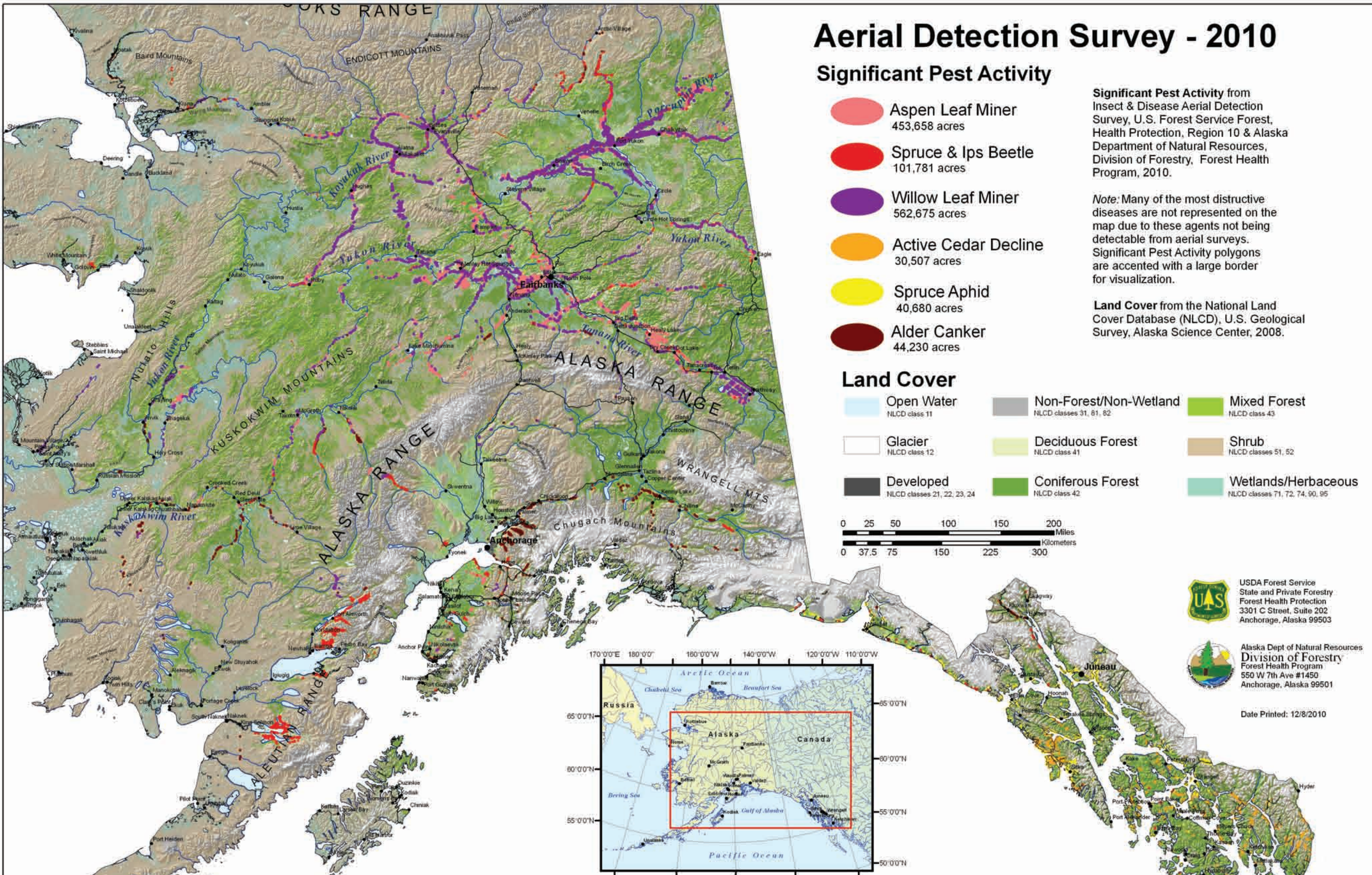
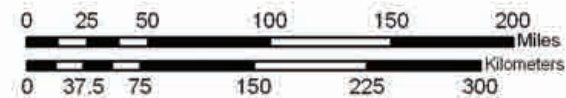
Significant Pest Activity from Insect & Disease Aerial Detection Survey, U.S. Forest Service Forest, Health Protection, Region 10 & Alaska Department of Natural Resources, Division of Forestry, Forest Health Program, 2010.


Note: Many of the most destructive diseases are not represented on the map due to these agents not being detectable from aerial surveys. Significant Pest Activity polygons are accented with a large border for visualization.


Land Cover from the National Land Cover Database (NLCD), U.S. Geological Survey, Alaska Science Center, 2008.

Land Cover

- | | | |
|--|---|--|
|  Open Water
NLCD class 11 |  Non-Forest/Non-Wetland
NLCD classes 31, 81, 82 |  Mixed Forest
NLCD class 43 |
|  Glacier
NLCD class 12 |  Deciduous Forest
NLCD class 41 |  Shrub
NLCD classes 51, 52 |
|  Developed
NLCD classes 21, 22, 23, 24 |  Coniferous Forest
NLCD class 42 |  Wetlands/Herbaceous
NLCD classes 71, 72, 74, 90, 95 |

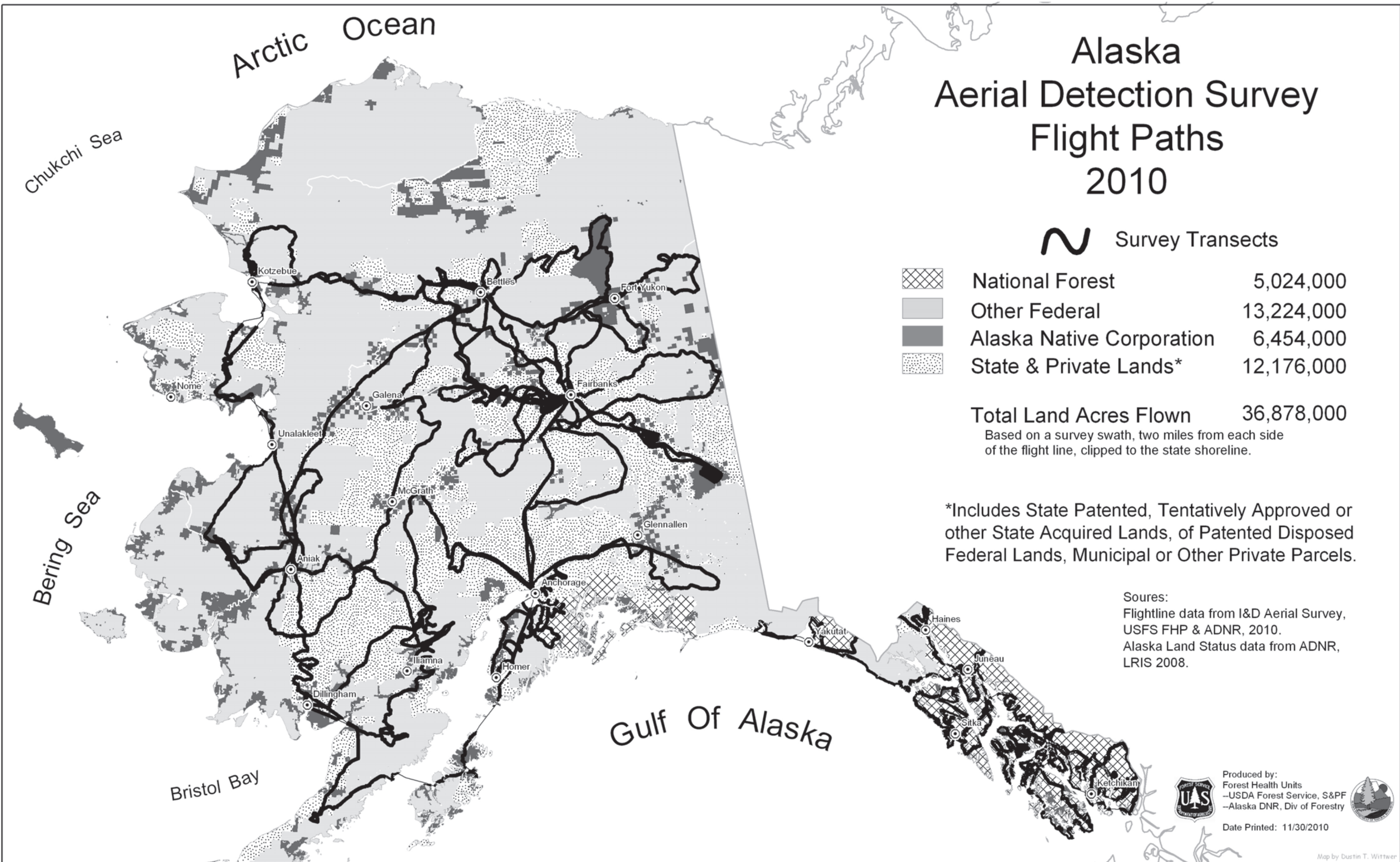


 USDA Forest Service
State and Private Forestry
Forest Health Protection
3301 C Street, Suite 202
Anchorage, Alaska 99503

 Alaska Dept of Natural Resources
Division of Forestry
Forest Health Program
550 W 7th Ave #1450
Anchorage, Alaska 99501

Date Printed: 12/8/2010

Map 2. Survey flight paths from 2010 aerial survey and general ownership



Alaska Aerial Detection Survey Flight Paths 2010

 Survey Transects

	National Forest	5,024,000
	Other Federal	13,224,000
	Alaska Native Corporation	6,454,000
	State & Private Lands*	12,176,000



Total Land Acres Flown 36,878,000

Based on a survey swath, two miles from each side of the flight line, clipped to the state shoreline.

*Includes State Patented, Tentatively Approved or other State Acquired Lands, of Patented Disposed Federal Lands, Municipal or Other Private Parcels.

Sources:
Flightline data from I&D Aerial Survey, USFS FHP & ADNR, 2010.
Alaska Land Status data from ADNR, LRIS 2008.

Produced by:
Forest Health Units
—USDA Forest Service, S&PF
—Alaska DNR, Div of Forestry

Date Printed: 11/30/2010