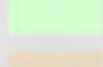


Aerial Insect and Disease Detection Survey 2013

Significant Pest/Disease Activity

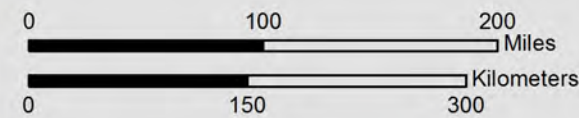
-  Alder Defoliation/Dieback
159,572 Acres
-  Aspen Defoliation
102,875 Acres
-  Spruce Bark/Engraver Beetle
35,084 Acres
-  Birch Defoliation/Leaf Roller/Aphids
337,683 Acres
-  Black Headed Budworm
121,889 Acres
-  Willow Defoliation/Miners
28,231 Acres
-  Cedar Decline
13,353 Acres

Land Cover

-  Conifer Forest
-  Mixed/Broadleaf Forest
-  Shrub
-  Non-Forest
-  Water

Note: Many of the most destructive diseases are not represented on the map due to these agents not being detectable from aerial surveys.

Activity polygon area may be larger than actual area because activity polygons are enhanced with a large border to aid visualization.



US Forest Service, Alaska Region,
Forest Health Protection
161 East 1st Avenue, Door 8
Anchorage, Alaska 99501

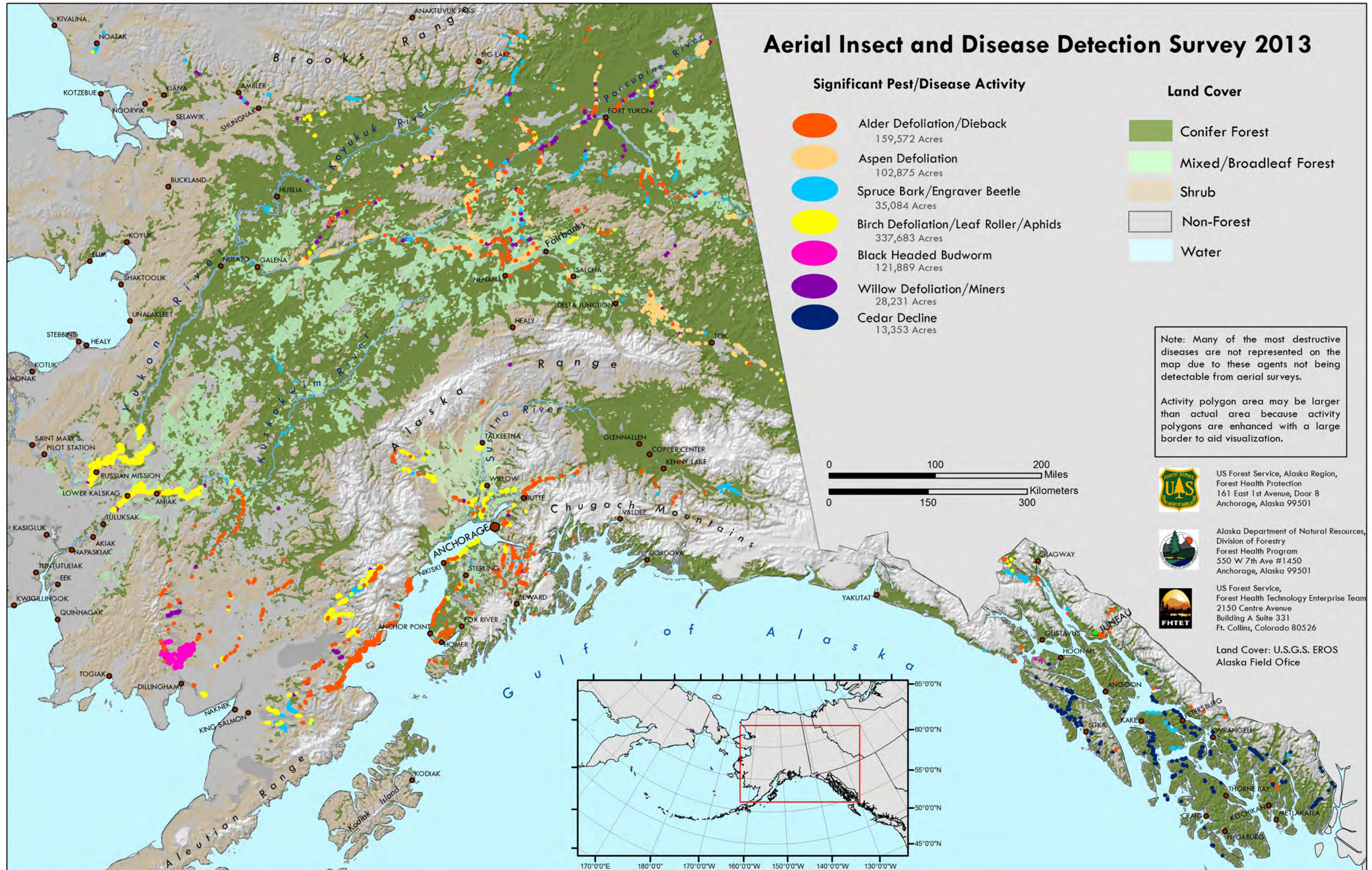


Alaska Department of Natural Resources,
Division of Forestry
Forest Health Program
550 W 7th Ave #1450
Anchorage, Alaska 99501



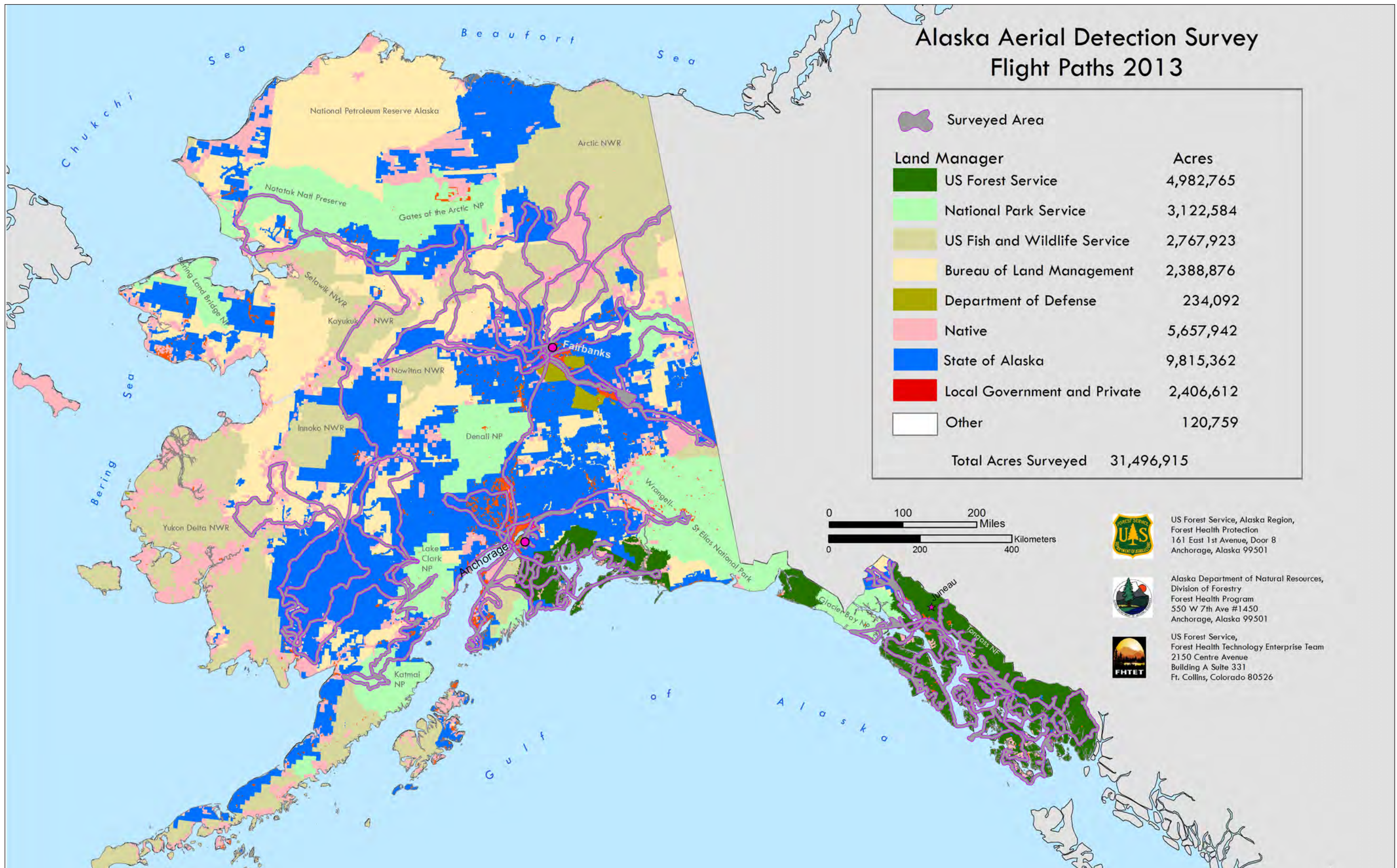
US Forest Service,
Forest Health Technology Enterprise Team
2150 Centre Avenue
Building A Suite 331
Ft. Collins, Colorado 80526

Land Cover: U.S.G.S. EROS
Alaska Field Office



Map 1. Aerial Detection Survey- 2013 significant pest activity.

Alaska Aerial Detection Survey Flight Paths 2013



Map 2. Survey flight paths from 2013 aerial survey and general ownership.